



a racial groundswell. About five per cent of the emancipated people could read and write, and these were not slow to inject the spirit into the rest of their people, and by the time that the states were ready to inaugurate a system of schools, no class was more responsive than the late slaves. Some of the former slaves who had heard of colleges and universities, but had never seen either, aspired to found such for their people. The most remarkable instance occurred at Louisville, Kentucky, where a group of unlettered ex-slaves met in an old building in August (succeeding the close of the war, in April, 1865) and, though bearing the marks of slavery on their bodies, and simply knowing that a university meant a place of learning, took steps to begin a school which gradually

developed into what came to be known as the State University of Kentucky, a large and flourishing college for colored people which stands today in Louisville, with buildings and grounds in the heart of that city. Throughout the years, from that early time till now, it has done excellent work, not alone for the colored race but for the commonwealth of Kentucky, and is still a great educational lighthouse to a struggling people.



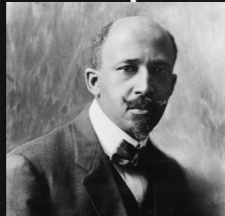
Henry McNeal Turner



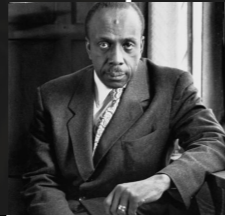
William J. Simmons



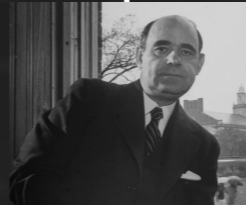
Booker T. Washington



W.E.B. DuBois



Howard Thurman



Mordecai Johnson



Benjamin Mayes



Ida B. Wells



Vernon Johns



Martin Luther King, Jr.



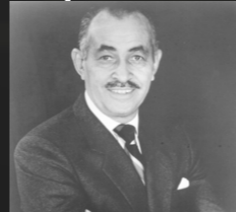
Rosa Parks



Prathia Hall



William Augustus Jones



Wyatt T. Walker



Ralph David Abernathy, Sr.



Fred Shuttlesworth



Andrew Young



F.G. Sampson, II



Jesse Jackson



Al Sharpton



Otis Moss, Jr.



Jeremiah Wright

**Simmons College of Kentucky has done more to bridge the racial divide and overcome the 9th street barrier, than any other institution in the city of Louisville.**

**The Huffington Post recently ranked Louisville as the fourth most segregated city in America. Simmons College of Kentucky finds this statistic unacceptable. In the words of Martin Luther King, Jr., “Racial segregation (concentrated poverty) produces social isolation, economic deprivation and emotional frustration.”**

**Simmons College of Kentucky is the greatest bridge ever constructed in Louisville to take West Louisvillians from despair to hope. At Simmons, West Louisville students are exposed to a world beyond the 9th Street divide.**

- a. While Simmons seeks to serves all people in the Louisville Metro and beyond, our target demographic is West Louisville. According to “Louisville Magazine” there are 8 times more graduates in East Louisville compared to West Louisville. Louisville Magazine cites this statistic as the greatest gap between the East and West.**
- b. Simmons is a great source of pride for West Louisville and the black community.**
- c. Simmons College, America’s 107th designated HBCU, is poised to create educational excellence as the new norm for West Louisville.**

## WEST END

22 SELECTED CENSUS TRACTS

## EAST END

22 SELECTED CENSUS TRACTS

Unemployment  
13.4%

African-American (70%)  
WHITE (18%)

African-American (4%)  
WHITE (81%)

Unemployment  
3.9%

MEDIAN HOUSEHOLD INCOME: \$21,733

MEDIAN HOUSEHOLD INCOME: \$59,600

Head of Household

MALE: 62% FEMALE: 38%

Head of Household

MALE: 82% FEMALE: 8%

## EDUCATION

Some College or Higher .....38%  
Bachelor's Degree or Higher .....7%

## EDUCATION

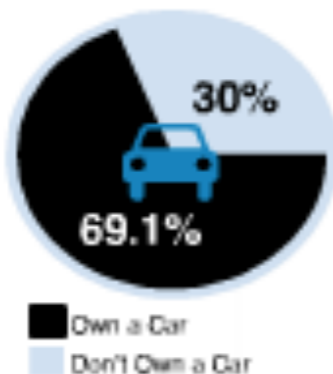
Some College or Higher .....79%  
Bachelor's Degree or Higher .....55%

## H O M E

Median Home Value .....\$66,877  
Own Home .....33%  
Vacant Units .....22%

## H O M E

Median Home Value .....\$229,823  
Own Home .....57%  
Vacant Units .....9%



### NEIGHBORHOODS

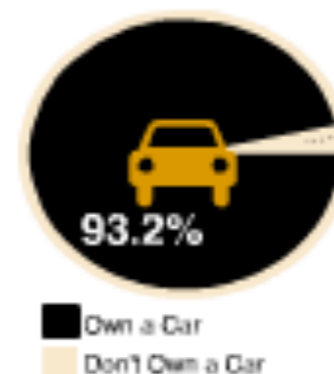
Algonquin  
Call Tom la  
Chickadee  
Park DuValle  
Park Hill  
Portland  
Russell  
Shawnee

Population: 61,251

### NEIGHBORHOODS

Clifton  
Crescent Hill  
Highlands  
Middletown  
St. Matthews  
Mockingbird Valley  
Windy Hills  
Indian Hills  
Strathmoor

Population: 68,523



All Businesses 1,856

All Businesses 6,352

Supermarkets	5	9
Banks	13	45
Pharmacies	6	21
Hospitals	0	6
Pediatric Physicians	11	73
OB/GYN Physicians	3	148
Dentists	55	188
Attorneys	6	157
Veterinarians	1	25
Restaurants	30	255
Coffee Shops	1	16
Bakers	3	20
Liquor Stores	24	18
Clothing Stores	12	53
Movie Theaters	0	2
Hotels/Motels	0	7
Barbershops	26	9
Beauty Salons	36	117

For the purposes of our statistical comparison of West End and East End, we started with the 22 census tracts that compose west Louisville, which we define as the area bounded roughly by Ninth Street, Algonquin Parkway and the Ohio River, and then selected 22 census tracts in the East End where many of our readers live. (See map on page 28.)

For data on population, race, income, home values, jobs, education and housing we used the 2007-2011 U.S. Census Bureau's American Community Survey.

To get an idea of how the two areas stack up in the kinds of businesses and amenities available to residents, we used data from ReferenceUSA, a company that maintains a database of about 15 million U.S. businesses.

# A TALE OF TWO CITIES

Our statistical quest started with one basic question: If you compared the West End to a relatively affluent area in the East End that has roughly the same population, what would each area look like? How different would they be?

The basic answer: Vary. As the accompanying data shows, in just about every economic statistical category — income, home values, unemployment, education — west Louisville's numbers are worse than the East End area's by a factor of about three. That's roughly three times lower in the case of income and home value and three times higher in unemployment rate and vacant housing units.

# Simmons Has Received National Recognition:

- a. Huffington Post
- b. Atlanta Journal Constitution
- c. Rickey Smiley Show
- d. Ebony Magazine
- e. Tom Joyner Radio Show





**For the first time in the history of the Commonwealth of Kentucky and the city of Louisville, a private black institution will bring to the city, annually, hundreds of thousands of dollars to advance higher education among African Americans.**

- a. Our first allocation was received on October 1st. Simmons will receive from the U.S. Dept. of Education, half a million dollars over the next two years. This allocation will increase in subsequent years.**
- b. Simmons College is eligible for the \$1.1 Billion that is set aside exclusively for HBCU's, of which 73% is set aside for capital development loans for private HBCUs like Simmons**

SIMMONS

COLLEGE OF KENTUCKY

BY THE

NUMBERS

# **6 DEGREE PROGRAMS**

## **Bachelor of Arts**

**Business Administration**

**Sociology**

**Communications**

**Religious Studies**

**Music**

## **Associate of Arts**

**General Studies**

**40**

**FACULTY  
MEMBERS**

**220**

**COURSE  
OFFERINGS**

**210**

**STUDENTS**

**\$5,310**

**TUITION  
PER YEAR**

## **Simmons College of Kentucky has created Articulation Agreements with:**

- **University of Louisville**
- **Campbellsville University**
- **Kentucky State University**
- **University of Kentucky (Spring 2017)**



**Simmons College of Kentucky has a partnership with Baptist Seminary of Kentucky, bringing graduate education to West Louisville.**

# **STUDENT**ACTIVITIES

- **Men's Basketball Team**
- **Women's Basketball Team**
- **Band and Drum Line**
- **Dance Team**
- **Student Government Association**
- **Sociology Club**
- **Business Club**

**WHY AN HISTORICALLY BLACK COLLEGE & UNIVERSITY (HBCU)  
FOR LOUISVILLE?**

**HBCU's educated 3% of  
African American Students.**



WHY AN HISTORICALLY BLACK COLLEGE & UNIVERSITY (HBCU)  
**FOR LOUISVILLE?**

**30%** of all African American Teachers

**60%** of all African American Lawyers

**60%** of all African American Doctors

**Came from an HBCU.**

WHY AN HISTORICALLY BLACK COLLEGE & UNIVERSITY (HBCU)  
**FOR LOUISVILLE?**

- 1.
- 2.
- 3.

**WHY AN HISTORICALLY BLACK COLLEGE & UNIVERSITY (HBCU)  
FOR LOUISVILLE?**

- 1. No Cultural Barriers for Students to overcome.**
- 2.**
- 3.**

**WHY AN HISTORICALLY BLACK COLLEGE & UNIVERSITY (HBCU)  
FOR LOUISVILLE?**

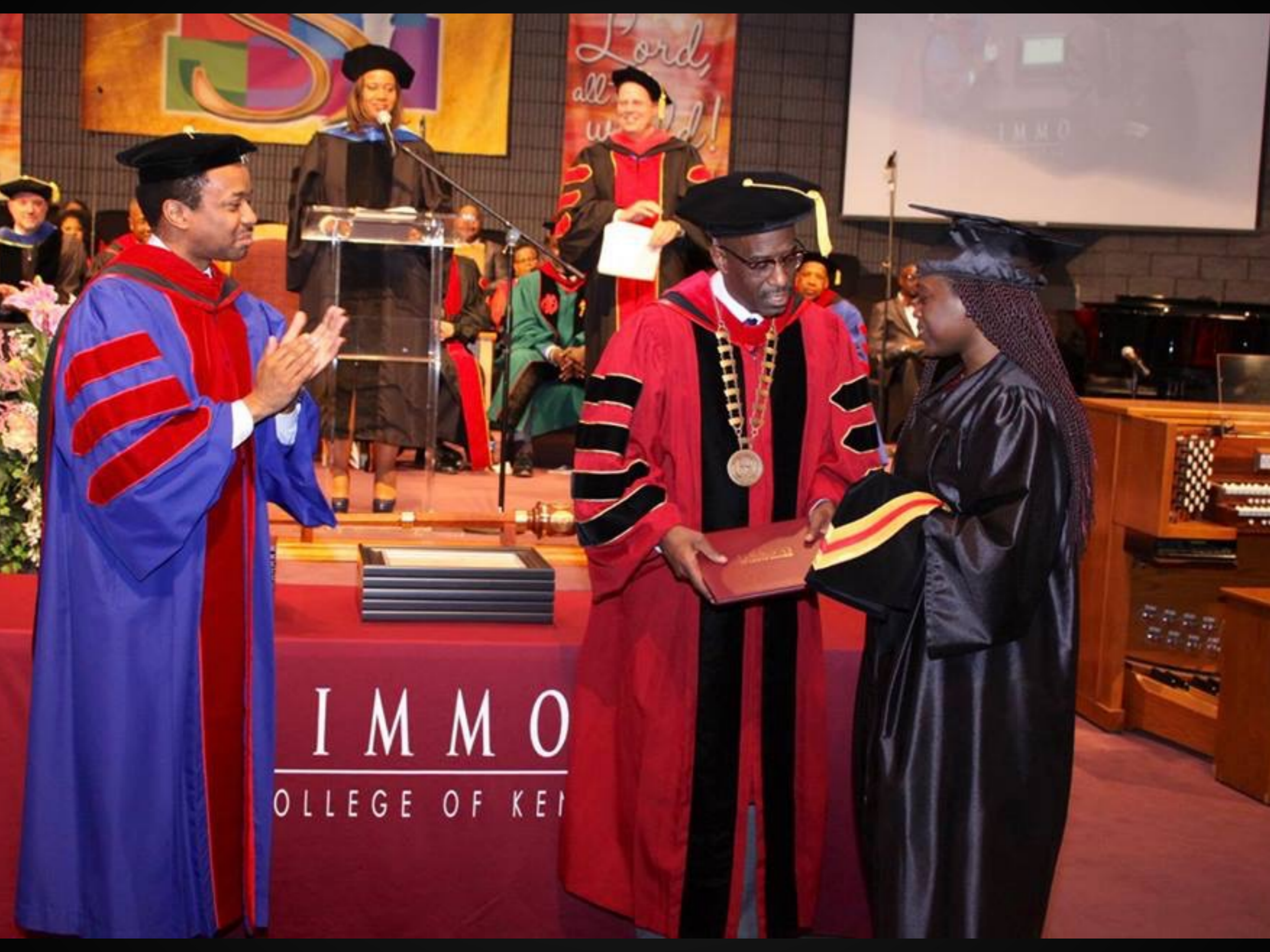
- 1. No Cultural Barriers for Students to overcome.**
- 2. Greater Opportunities to experience leadership.**
- 3.**

**WHY AN HISTORICALLY BLACK COLLEGE & UNIVERSITY (HBCU)  
FOR LOUISVILLE?**

- 1. No Cultural Barriers for Students to overcome.**
- 2. Greater Opportunities to experience leadership.**
- 3. Faculty and Administration are sensitive to the markers of Student success.**







IMMO  
COLLEGE OF KEI





# SIMMONS

COLLEGE OF KENTUCKY

## STATISTICS ON THE GRADUATING CLASS OF 2016 OF SIMMONS COLLEGE OF KENTUCKY

<b>67%</b> FIRST GENERATION COLLEGE STUDENTS	<b>33%</b> HAD PARENTS WHO DID NOT GRADUATE FROM HIGH SCHOOL	<b>78%</b> ARE LIVING AT OR BELOW POVERTY LEVEL	<b>67%</b> ARE PARENTS	<b>44%</b> ARE CARING FOR A DEPENDENT AT HOME	<b>44%</b> HAVE BEEN DIAGNOSED WITH A DISABILITY OR IMPAIRMENT (MOBILITY, LEARNING, OR OTHER)	<b>33%</b> WORKED AT LEAST 35 HOURS PER WEEK DURING THE SEMESTER	<b>33%</b> HAVE BEEN INCARCERATED	<b>22%</b> HAVE BEEN HOMELESS FOR MORE THAN FIVE CONSECUTIVE DAYS	<b>100%</b> GRADUATED WITH NO STUDENT LOAN DEBT
--	--	--	------------------------------	---	---	--	---	---	---

**A challenging demographic for college enrollment is among African American males. Simmons has the distinction of 60% African American male enrollment.**

# **MISSION** STATEMENT

**Simmons College of Kentucky is an institution of higher education dedicated to educating people in the urban context through strong academic and professional programs in order that they may become productive citizens and agents of change in society.**

# **CORE**VALUES

## **ACCESS + QUALITY**

**Simmons will provide an equal educational opportunity to increasing numbers of students from underserved and un-served populations residing primarily among the economically and socially bypassed in the Metro Louisville Community.**

# **CORE**VALUES

## **LEADERSHIP**

**Simmons will stimulate, initiate, and implement programs and services to both inspire and guide its students, faculty, and staff in developing their self-confidence, self-discipline, and self-empowerment to become productive leaders.**

# **CORE**VALUES

## **RELEVANCE**

**Simmons will respond to the evolving needs of the economic and political culture— highly literate, well-spoken, technologically competent graduates educated to excel in the 21st century workforce.**

# **CORE**VALUES

## **DIVERSITY**

**Simmons will sustain and strengthen its commitment to recruit, enroll, educate, and graduate students and to employ faculty and staff that represent a diverse cross-section of the community.**

# **CORE**VALUES

## **SOCIAL RESPONSIBILITY**

**Simmons will promote active participation in constructive social exchange through volunteerism, leadership and civic action on the part of its students students, faculty, and staff.**





# **THE NATIONAL BAPTIST CONVENTION OF AMERICA, INTERNATIONAL, INC.**

- **The NBCA, Int'l is moving its headquarters to Louisville on the campus of Simmons College of Kentucky.**
- **Simmons has been named the educational provider of choice for the NBCA, Int'l.**
- **The NBCA, Int'l. has 3.2 million members.**
- **Over the next four years, the NBCA Int'l will bring 4 conventions to Louisville with an estimated economic impact of over \$7,000,000.**



# **THE FULL GOSPEL BAPTIST CHURCH FELLOWSHIP INTERNATIONAL**

- **Simmons College of Kentucky has been named the educational provider for the Full Gospel Baptist Church Fellowship, International.**



**PNBC**

---

PROGRESSIVE NATIONAL  
BAPTIST CONVENTION, INC

# **THE PROGRESSIVE NATIONAL BAPTIST CONVENTION**

- **The Progressive National Baptist Convention has named President Kevin W. Cosby as “Educator of the Year” for 2016.**



