

BUDDHA BLESS TEMPLE at PARK RIDGE VILLAGE

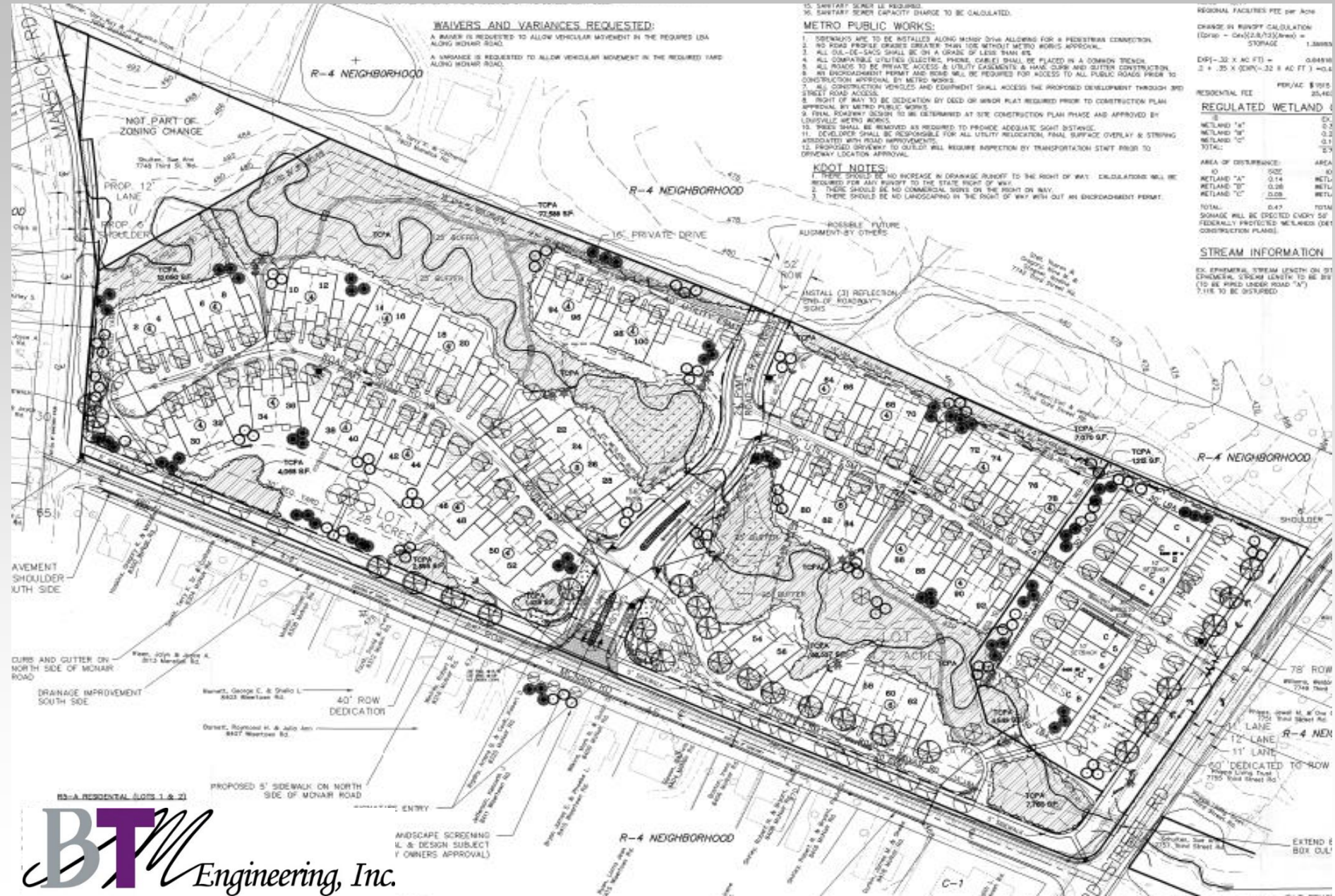
**Owner: Buddha Bless Temple, Inc.
Rev. Thich Hang Dat, President**

- Revised Detailed Development Plan
16DEVPLAN1035**
- Landscape Waiver**

PLANNERS, LANDSCAPE ARCHITECTS, ENGINEERS

BT *Engineering, Inc.*

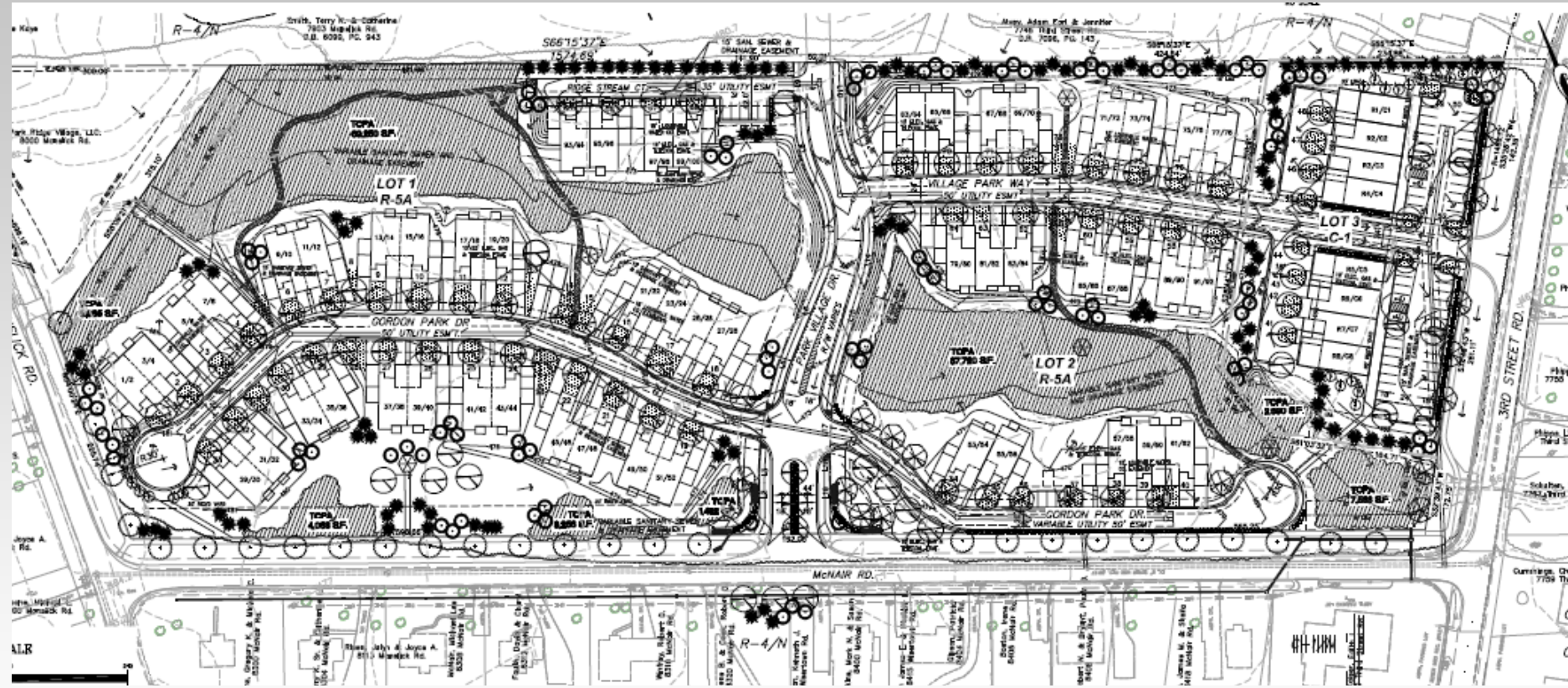
APPROVED DEVELOPMENT PLAN - 2006



AERIAL VIEW OF PHASE ONE – PARTIALLY CONSTRUCTED INFRASTRUCTURE



APPROVED LANDSCAPE PLAN- 2006



APPROVED DEVELOPMENT PLAN - 2006



MULTI-FAMILY CONDOMINIUMS

60 units on 7.3 acres (Lot 1)

40 units on 4.72 acres (Lot 2)

8 units on 1.94 acres (Lot 3)

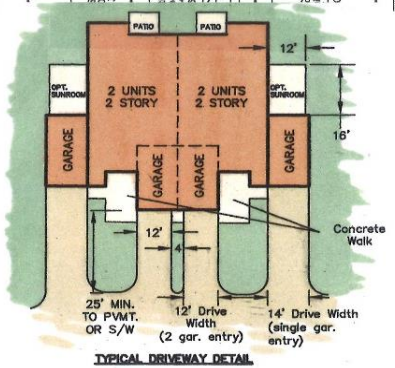
108 Condominium Units Total

COMMERCIAL CONDOMINIUMS

8 units on 1.94 acres (Lot 3)

Total = 12,800 SF

REVISED DEVELOPMENT PLAN



**REVISED DETAILED DEVELOPMENT PLAN
 BUDDHA BLESSED TEMPLE at PARK RIDGE VILLAGE
 7748 THIRD STREET ROAD
 LOUISVILLE, KENTUCKY 40214**

LAND USE CHANGES

- **RELIGIOUS CAMPUS (LOTS 1-3)**
 - 6 1-story buildings on 4.48 acres
 - Replaced 28 res. & 4 commercial condos
 - Added .80 acres of open green space
- **COMMERCIAL BUILDING (LOT 4)**
 - Reduced 4,750 SF & 1.05 acres
 - Reduced 4 multi-family condo units
 - 1-story building: 8,050 SF on .89 acres



2006 PLAN

COMMERCIAL/CONDO BUILDINGS (LOT 3)

2: 2-story buildings on 1.94 acres w/ 76 pk spaces
 8 Comm. Units- 12,800 SF w/ 52 pk spaces
 2nd-story: 8 res. condos- 12,560 SF w/ 24 spaces
 Both buildings are 2-stories – 35 feet height

MULTI-FAMILY CONDOS (LOT 2)

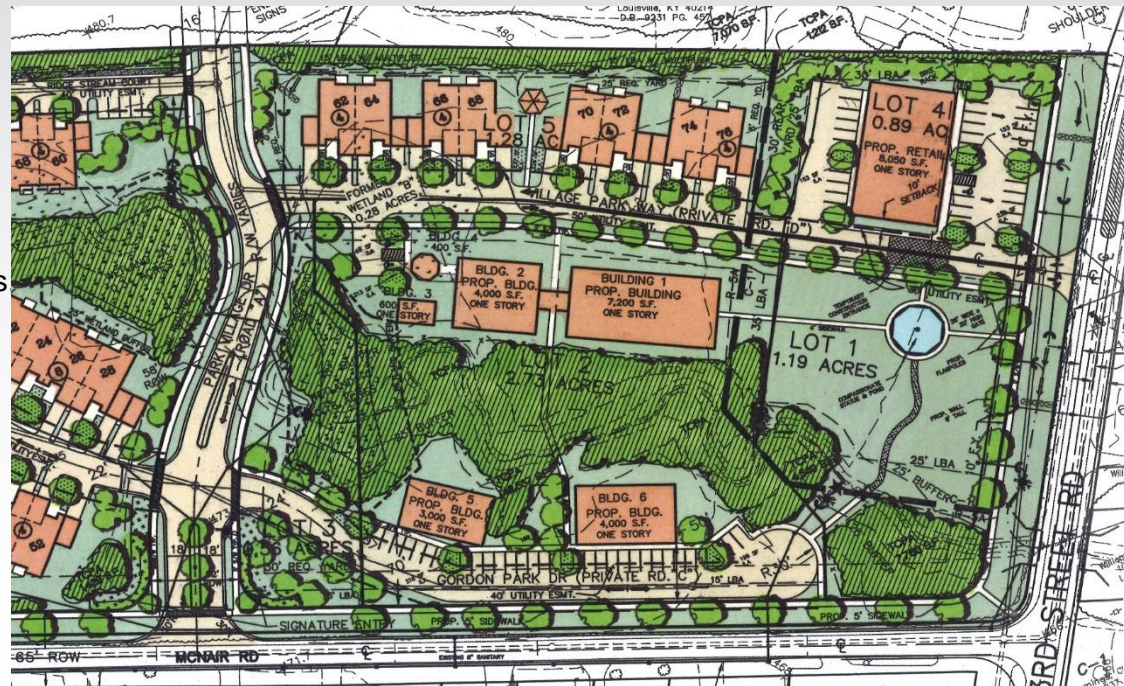
40 units/ 3- 8-plexes, 2- 6-plexes, 1- 4-plex – 2-story
 All buildings are 2-stories – 30 feet height

RELIGIOUS CAMPUS (LOTS 1-3)

6: 1-story buildings on 4.48 acres
 Replaced 28 res. & 4 commercial condos/ 2-story bldgs
 Added .80 acres of open green space
 Water feature with religious statue in park-like setting
 Added 800+ LF sidewalks/paths

COMMERCIAL BUILDING (LOT 4)

1-story building: 8,050 SF on .89 acres
 Reduced 4,750 SF & 1.05 acres
 Reduced 4 multi-family condo units



2016 PLAN

LAND USE UNCHANGED

- **MULTI-FAMILY CONDOMINIUMS**
 - 60 units on 7.3 acres (Lot 6)
 - 16 units on 1.28 acres (Lot 5)
 - Parking & TCPA totals unchanged
- **RIGHT-OF-WAY DEDICATION**
- **ROAD IMPROVEMENTS**
- **LANDSCAPE & BUFFERS**

Approved Four-Plex Condominiums



Alternate 1



Alternate 2



Alternate 3



Alternate 4

Approved Six-Plex Condominiums

Alternate 1



Alternate 2



Alternate 3



Approved Eight-Plex Condominiums



Alternate 1

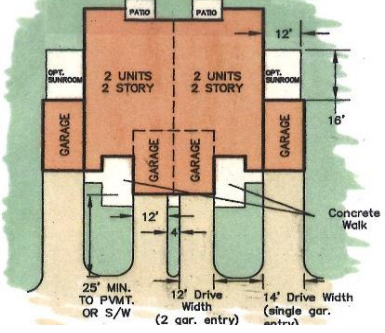


Alternate 2



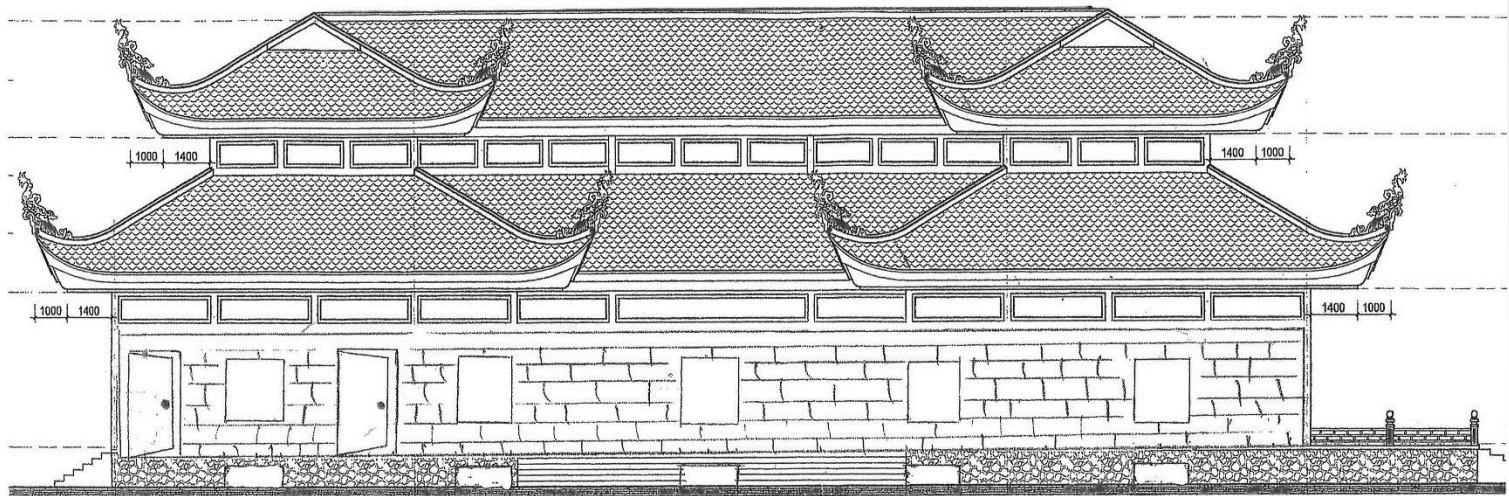
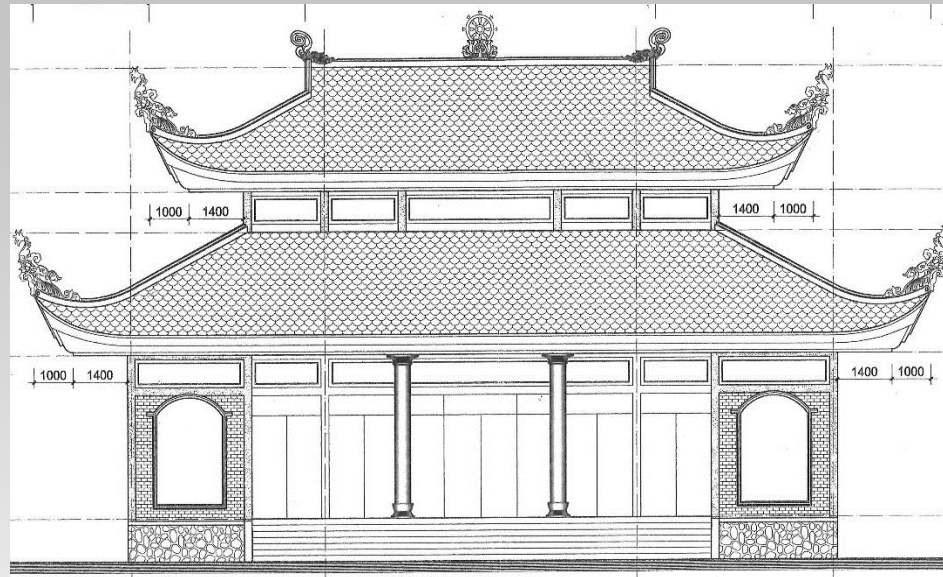
Alternate 3

REVISED DEVELOPMENT PLAN



**REVISED DETAILED DEVELOPMENT PLAN
 BUDDHA BLESSED TEMPLE at PARK RIDGE VILLAGE
 7748 THIRD STREET ROAD
 LOUISVILLE, KENTUCKY 40214**

TEMPLE – BUILDING # 1 (LOT 2)



EDUCATIONAL BUILDINGS (2, 5 & 6)



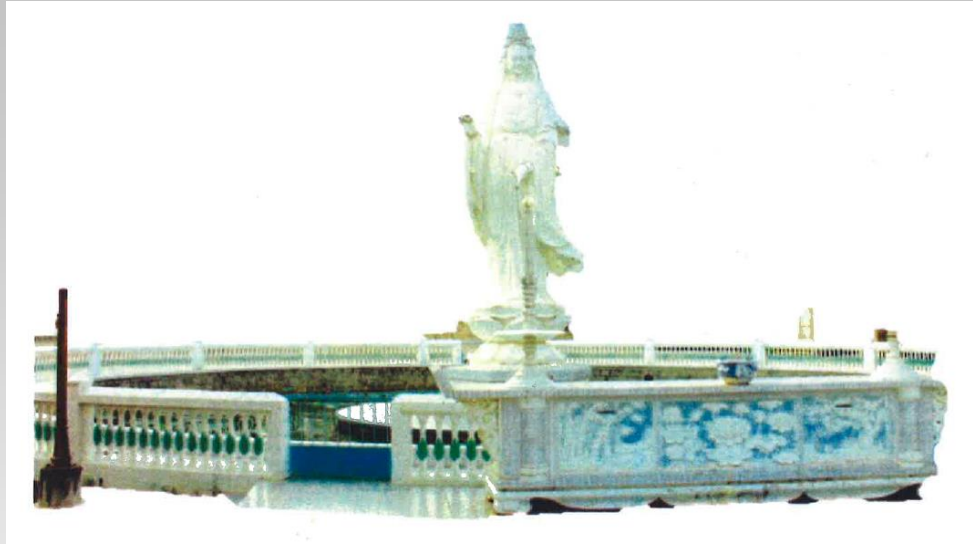
PRIVATE PRAYER BUILDINGS (3 & 4)



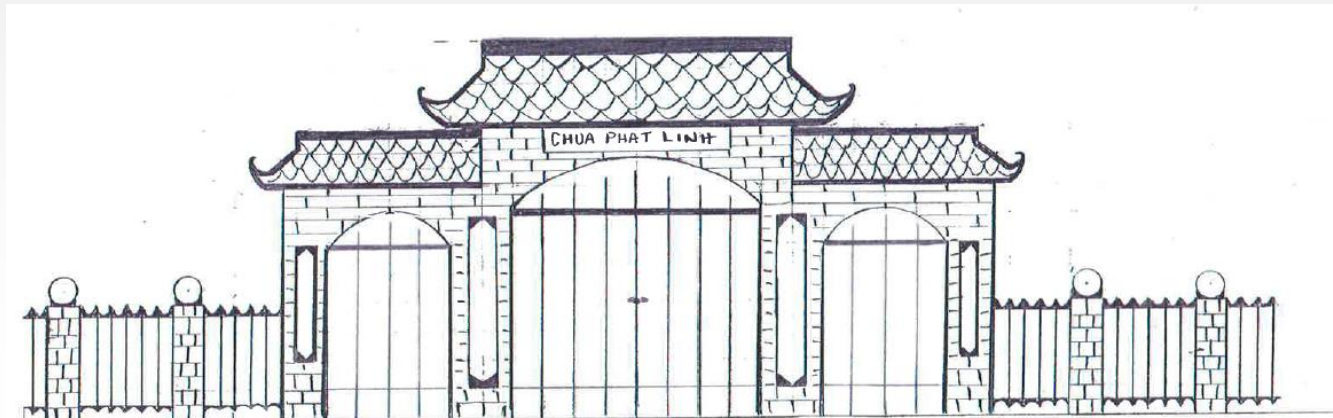
COMMERCIAL BUILDING LOT 4



COMPASSIONATE STATUE & WATER FEATURE



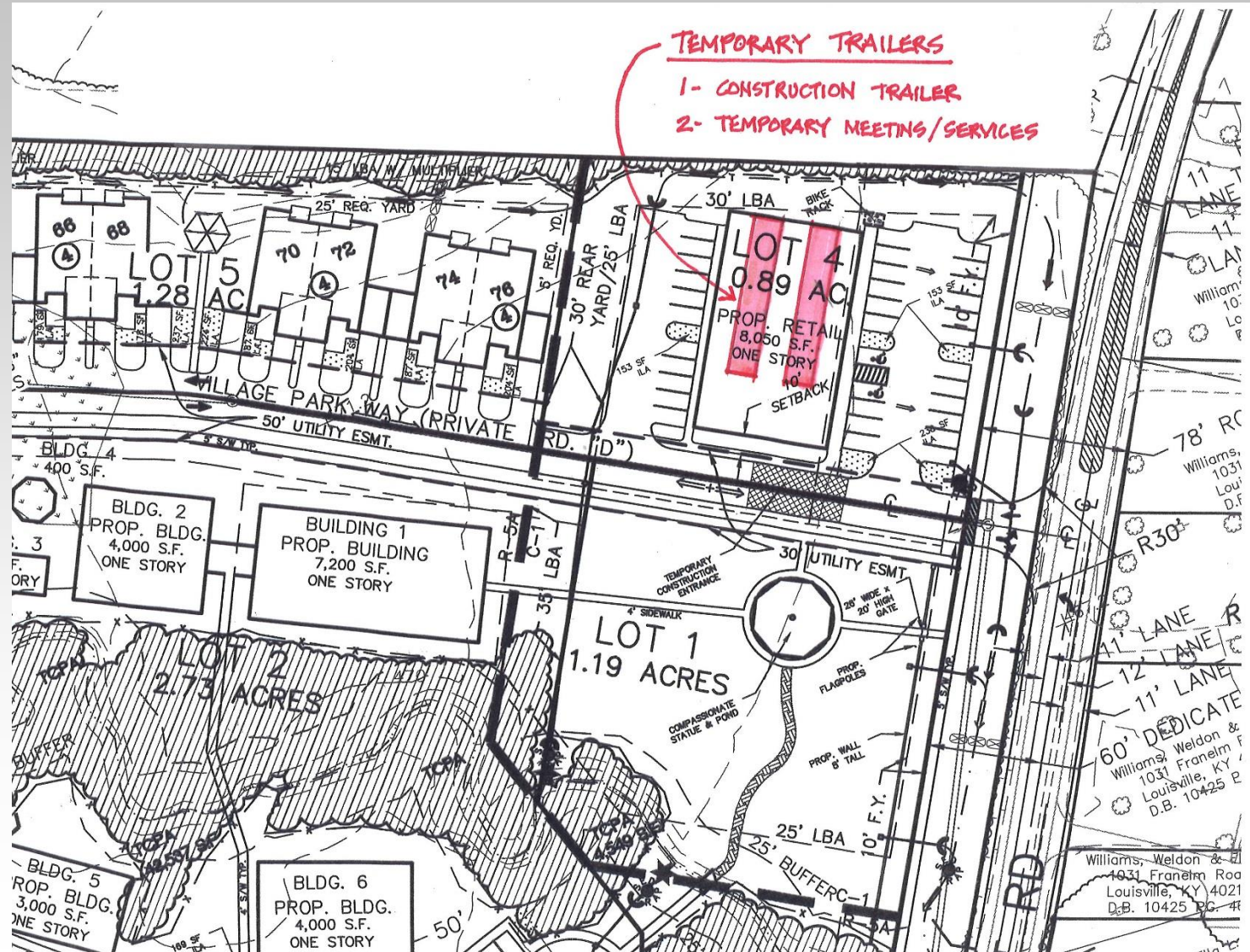
WALL & GATEWAY



TEMPORARY TRAILERS- During Construction

1- Construction Office

2- Meetings & Services



AERIAL VIEW OF PHASE ONE – PARTIALLY CONSTRUCTED INFRASTRUCTURE



View Along McNair Road Looking West



SITE

View Along McNair Road Looking East



SITE

View from NcNair Road Looking North Along Manslick Road



View Along Manslick Road Looking North





Pictures of Subject Property-Significant Tree Preservation Will Contribute To a 28% Tree Canopy Coverage On Site When Completed

