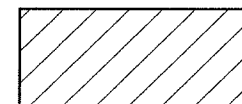
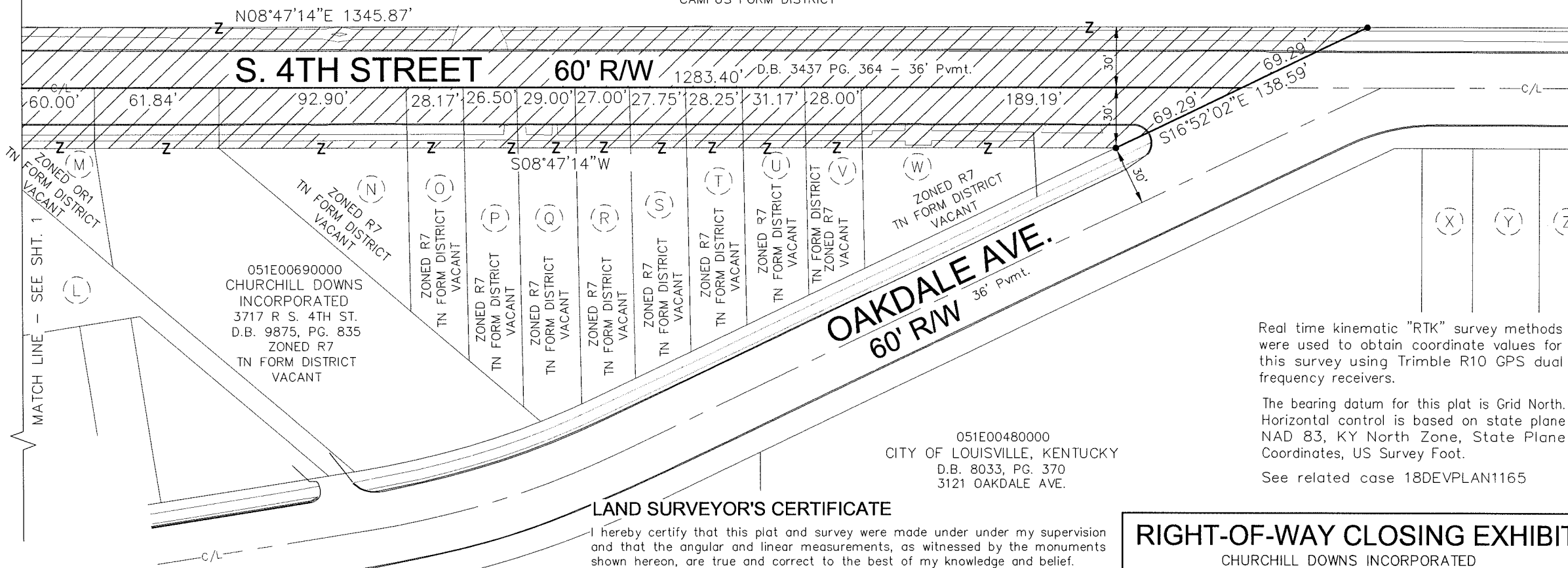




051G00060000
 CITY OF LOUISVILLE, KENTUCKY
 D.B. 8033, PG. 370
 700 CENTRAL AVE.
 ZONED R7
 CAMPUS FORM DISTRICT



DENOTES RIGHT-OF-WAY
 TO BE CLOSED 2.010 ACRES
 TOTAL AREA = 87537 Sq. Ft.



051E00690000
 CHURCHILL DOWNS
 INCORPORATED
 3717 R S. 4TH ST.
 D.B. 9875, PG. 835
 ZONED R7
 TN FORM DISTRICT
 VACANT

051E00480000
 CITY OF LOUISVILLE, KENTUCKY
 D.B. 8033, PG. 370
 3121 OAKDALE AVE.

Real time kinematic "RTK" survey methods were used to obtain coordinate values for this survey using Trimble R10 GPS dual frequency receivers.

The bearing datum for this plat is Grid North. Horizontal control is based on state plane NAD 83, KY North Zone, State Plane Coordinates, US Survey Foot.

See related case 18DEVPLAN1165

LAND SURVEYOR'S CERTIFICATE

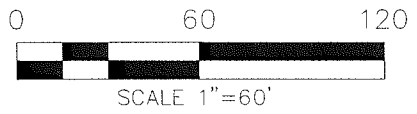
I hereby certify that this plat and survey were made under under my supervision and that the angular and linear measurements, as witnessed by the monuments shown hereon, are true and correct to the best of my knowledge and belief.

The relative positional accuracy of the adjusted network is within $\pm 0.10'+100$ PPM, which meets or exceeds the minimum standards of the governing authorities for a Urban survey.

 LICENSED PROFESSIONAL LAND SURVEYOR

 DATE

STATE of KENTUCKY
 KEITH D.
 CROWE
 2957
 LICENSED
 PROFESSIONAL
 LAND SURVEYOR



RIGHT-OF-WAY CLOSING EXHIBIT

CHURCHILL DOWNS INCORPORATED
 600 N. HURSTBOURNE PKWY, SUITE 400 LOU., KY 40222
 CITY OF LOUISVILLE, KENTUCKY
 AQ PROPERTIES, LLC
 KENTUCKY HORSEMENS BENEVOLENT
 AND PROTECTIVE ASSOCIATION, INC.



1046 E. CHESTNUT STREET
 LOUISVILLE, KENTUCKY 40204
 PH 502-585-2222 www.qk4.com

(A) 051F00330000
MICHAEL BELL
STEPHANIE BELL
D.B. 9312, PG. 381
3814 SOUTHERN PKWY

(B) 051F00340000
GENE C. BELL
D.B. 6191, PG. 547
3812 SOUTHERN PKWY

(C) 051F00350000
ERIC JAMIESON
D.B. 10330, PG. 21
3810 SOUTHERN PKWY

(D) 051F00360000
JOHN R. ELLIS, III
JANE M. ELLIS
D.B. 9420, PG. 918
3806 SOUTHERN PKWY

(E) 051F00370000
GEORGE T. PAYNE
D.B. 4985, PG. 730
3804 SOUTHERN PKWY

(F) 051F00380000
KEVIN D. TRIPLETT
D.B. 7700, PG. 842
3802 SOUTHERN PKWY

(G) 051F00390000
CHURCHILL DOWNS INCORPORATED
D.B. 5917, PG. 204
3800 SOUTHERN PKWY.

(H) 051G00070000
CITY OF LOUISVILLE, KENTUCKY
D.B. 8033, PG. 370

(I) 051E01040000
CITY OF LOUISVILLE, KENTUCKY
D.B. 8713, PG. 883 TRACT 1
3756 OAKDALE AVE.

(J) 051E00870000
CHURCHILL DOWNS INCORPORATED
D.B. 9541, PG. 545
3750 OAKDALE AVE.

(K) 051E00750000
KENTUCKY HORSEMENS BENEVOLENT
AND PROTECTIVE ASSOCIATION, INC.
D.B. 9681, PG. 547
3731 S. 4TH ST.

(L) 051E00910000
KENTUCKY HORSEMENS BENEVOLENT
AND PROTECTIVE ASSOCIATION, INC.
D.B. 9681, PG. 547
3729 S. 4TH ST.

(M) 051E00700000
KENTUCKY HORSEMENS BENEVOLENT
AND PROTECTIVE ASSOCIATION, INC.
D.B. 9681, PG. 547
3727 S. 4TH ST.

ADJACENT PROPERTY OWNERS

(N) 051E00680000
CHURCHILL DOWNS INCORPORATED
D.B. 9875, PG. 835
3717 S. 4TH ST.

(O) 051E00670000
CHURCHILL DOWNS INCORPORATED
D.B. 9710, PG. 593
3715 S. 4TH ST.

(P) 051E00660000
CITY OF LOUISVILLE, KENTUCKY
D.B. 8033, PG. 370
3713 S. 4TH ST.

(Q) 051E00650000
CHURCHILL DOWNS INCORPORATED
D.B. 7138, PG. 495
3711 S. 4TH ST.

(R) 051E00640000
CITY OF LOUISVILLE, KENTUCKY
D.B. 7885, PG. 40
3709 S. 4TH ST.

(S) 051E00630000
CHURCHILL DOWNS INCORPORATED
D.B. 9371, PG. 88
3707 S. 4TH ST.

(T) 051E00620000
CHURCHILL DOWNS INCORPORATED
D.B. 5738, PG. 756
3705 S. 4TH ST.

(U) 051E00610000
CHURCHILL DOWNS INCORPORATED
D.B. 10308, PG. 961
3703 S. 4TH ST.

(V) 051E00600000
CHURCHILL DOWNS INCORPORATED
D.B. 7206, PG. 448
3701 S. 4TH ST.

(W) 051E00590000
CHURCHILL DOWNS INCORPORATED
D.B. 7146, PG. 680
3141 S. 4TH ST.

(X) 051E00460000
CHURCHILL DOWNS INCORPORATED
D.B. 6050, PG. 684
3117 S. 4TH ST.

(Y) 051E00450000
CITY OF LOUISVILLE, KENTUCKY
D.B. 8033, PG. 370
3113 S. 4TH ST.

(Z) 051E00440000
CHURCHILL DOWNS INCORPORATED
D.B. 5855, PG. 778
3111 S. 4TH ST.

APPLICANTS

CHURCHILL DOWNS INCORPORATED
600 N. HURSTBOURNE PKWY, STE 400
LOUISVILLE, KY 40222-5389

CITY OF LOUISVILLE, KENTUCKY
527 W. JEFFERSON STREET
LOUISVILLE, KY 40202-2814

AQ PROPERTIES, LLC
600 N. HURSTBOURNE PKWY, STE 400
LOUISVILLE, KY 40222-5389

KENTUCKY HORSEMENS BENEVOLENT
AND PROTECTIVE ASSOCIATION, INC.
3733 S. 4TH STREET
LOUISVILLE, KY 40214-1712

LAND SURVEYOR'S CERTIFICATE

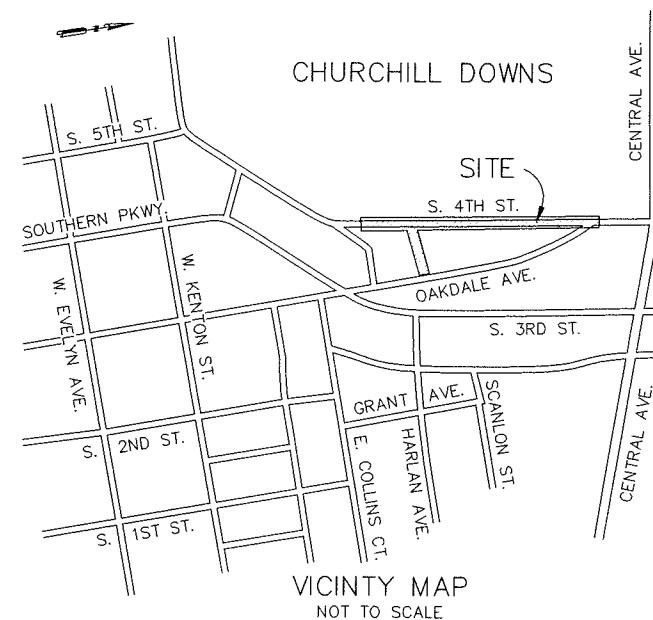
I hereby certify that this plat and survey were made under under my supervision and that the angular and linear measurements, as witnessed by the monuments shown hereon, are true and correct to the best of my knowledge and belief.

The relative positional accuracy of the adjusted network is within $\pm 0.10'' + 100$ PPM, which meets or exceeds the minimum standards of the governing authorities for a Urban survey.

LICENSED PROFESSIONAL LAND SURVEYOR

DATE

STATE of KENTUCKY
KEITH D.
CROWE
2957
LICENSED
PROFESSIONAL
LAND SURVEYOR



CLOSURE NOTES:

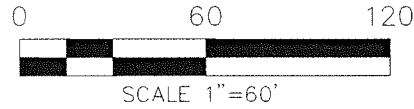
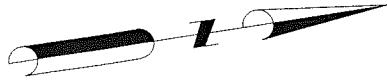
1. BLANKET CROSS ACCESS AGREEMENT TO BE RECORDED AT OR BEFORE THE TIME OF ROAD CLOSURE RECORDING.
2. PROPOSED USE OF AREA OF ROAD CLOSURE IS INTERNAL CIRCULATION FOR EXPANDED BACKSIDE OPERATIONS AT CHURCHILL DOWNS RACE TRACK.
3. UPON CLOSURE, 4TH STREET RIGHT-OF-WAY TO BE DEDICATED AS A JOINT PUBLIC UTILITY EASEMENT TO SERVE THE EXISTING UTILITIES TO REMAIN WITHIN THE 4TH STREET CORRIDOR INCLUDING BUT NOT LIMITED TO ELECTRIC, GAS TELECOMMUNICATIONS, AND SEWER.

RIGHT-OF-WAY CLOSING EXHIBIT

CHURCHILL DOWNS INCORPORATED
600 N. HURSTBOURNE PKWY, SUITE 400 LOU., KY 40222
CITY OF LOUISVILLE, KENTUCKY
AQ PROPERTIES, LLC
KENTUCKY HORSEMENS BENEVOLENT
AND PROTECTIVE ASSOCIATION, INC.



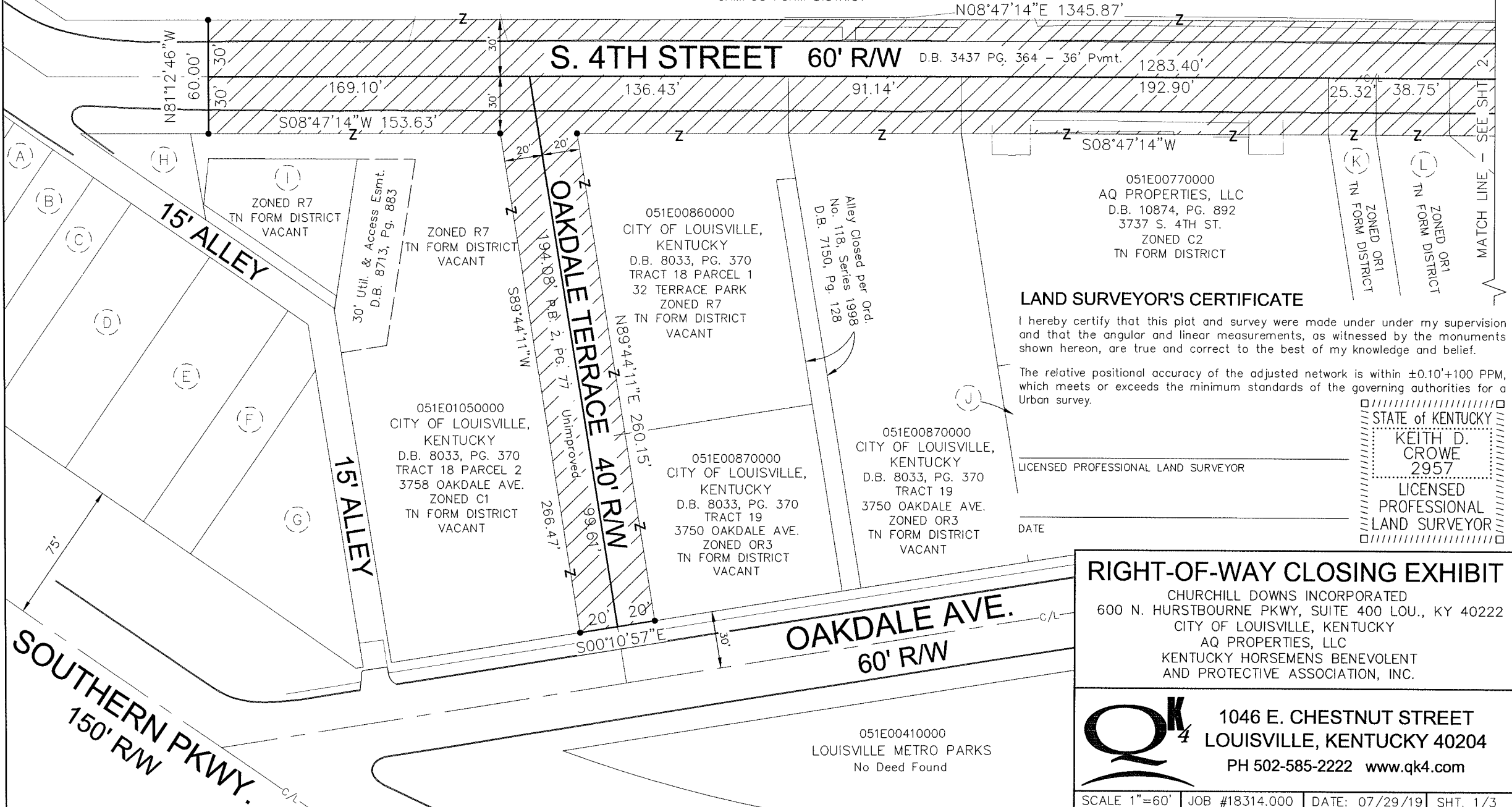
1046 E. CHESTNUT STREET
LOUISVILLE, KENTUCKY 40204
PH 502-585-2222 www.ok4.com



051G00060000
 CITY OF LOUISVILLE, KENTUCKY
 D.B. 8033, PG. 370
 700 CENTRAL AVE.
 ZONED R7
 CAMPUS FORM DISTRICT



DENOTES RIGHT-OF-WAY
 TO BE CLOSED 2.010 ACRES
 TOTAL AREA = 87537 Sq. Ft.



LAND SURVEYOR'S CERTIFICATE


I hereby certify that this plat and survey were made under my supervision and that the angular and linear measurements, as witnessed by the monuments shown hereon, are true and correct to the best of my knowledge and belief.

The relative positional accuracy of the adjusted network is within ±0.10'+100 PPM, which meets or exceeds the minimum standards of the governing authorities for a Urban survey.

STATE OF KENTUCKY
 KEITH D. CROWE
 2957
 LICENSED PROFESSIONAL LAND SURVEYOR

RIGHT-OF-WAY CLOSING EXHIBIT

CHURCHILL DOWNS INCORPORATED
 600 N. HURSTBOURNE PKWY, SUITE 400 LOU., KY 40222
 CITY OF LOUISVILLE, KENTUCKY
 AQ PROPERTIES, LLC
 KENTUCKY HORSEMENS BENEVOLENT AND PROTECTIVE ASSOCIATION, INC.

 1046 E. CHESTNUT STREET
 LOUISVILLE, KENTUCKY 40204
 PH 502-585-2222 www.qk4.com