

22-WAIVER-0006

**DISH Wireless
Co-location**



Louisville Metro Planning Commission

Zach Schwager, Planner I

February 17, 2022

Request

- **Waiver from City of Prospect Development Code section 4.4.2.B to allow an addition to an existing cell tower to exceed 110 ft. in height.**

Case Summary

- The subject site is located along the western side of US Highway 42 in between Timber Ridge Drive and Del Haven Avenue in the City of Prospect.
- The site is comprised of a fire station and a 110 ft. cell tower and associated lease area.

Case Summary

- The applicant is proposing an addition in order to co-locate that would make the tower a total of 130 ft.
- The existing cell tower was approved with a waiver to allow the height to exceed 100 ft. with a total of 110 ft.

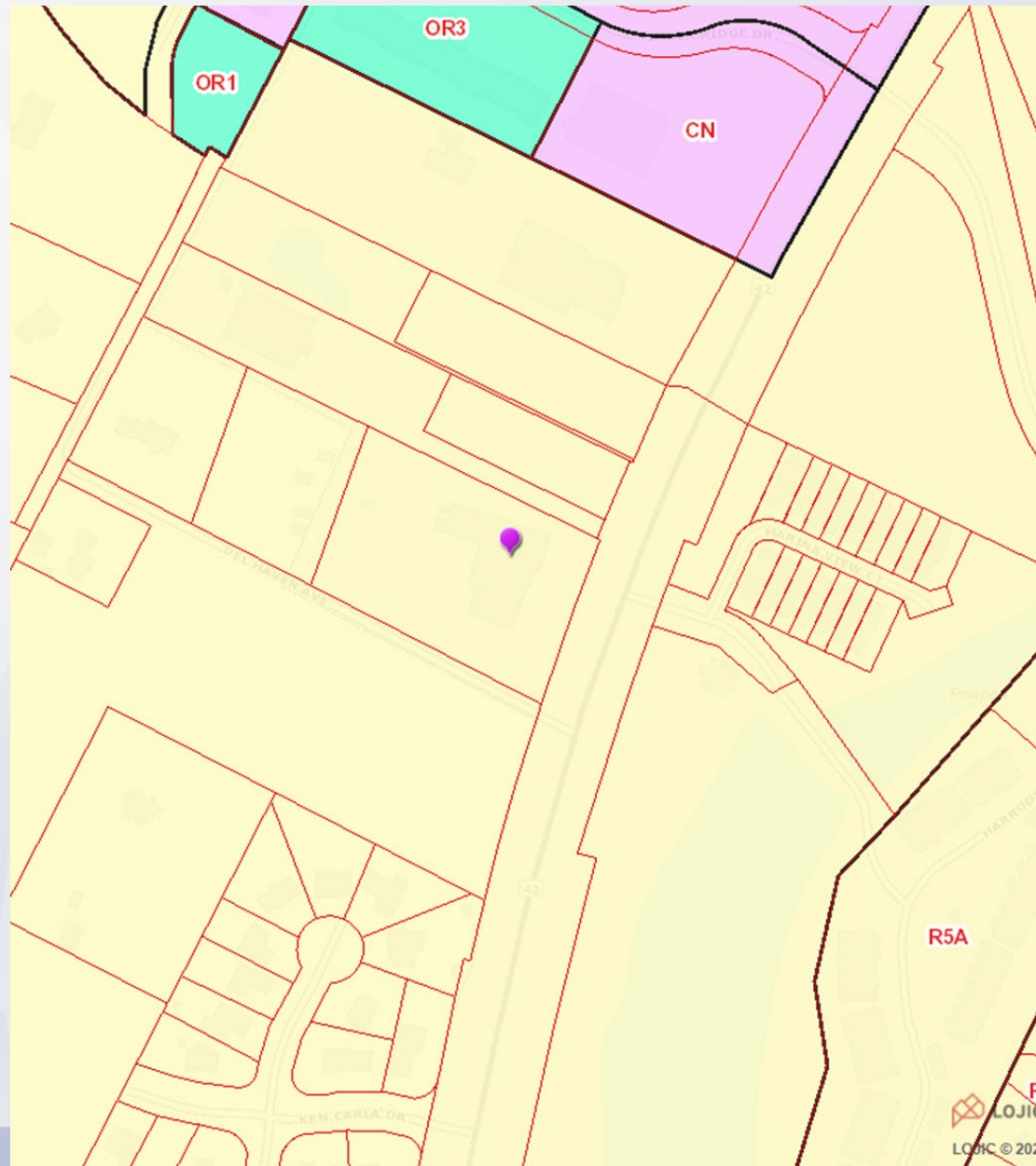
Case Summary

- Planning Commission recommended approval of this waiver for a 150 ft. cell tower to the City of Prospect; however, the City of Prospect only approved up to 110 ft.

Related Cases

- 04-02-05 - Cell Tower application for a 110-foot monopole cellular tower with a ground equipment compound, including waiver requests of the lot size, of the 50-foot setback from residential property lines, to reduce the landscape buffer area, to allow equipment structures to encroach into the lease lot's required yards, and to exceed the maximum height for a cellular tower.

Zoning/Form Districts



Aerial Photo



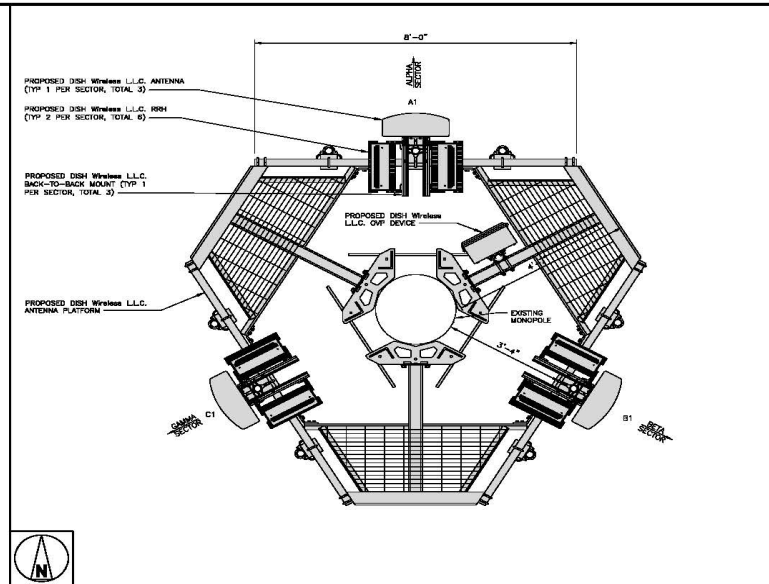
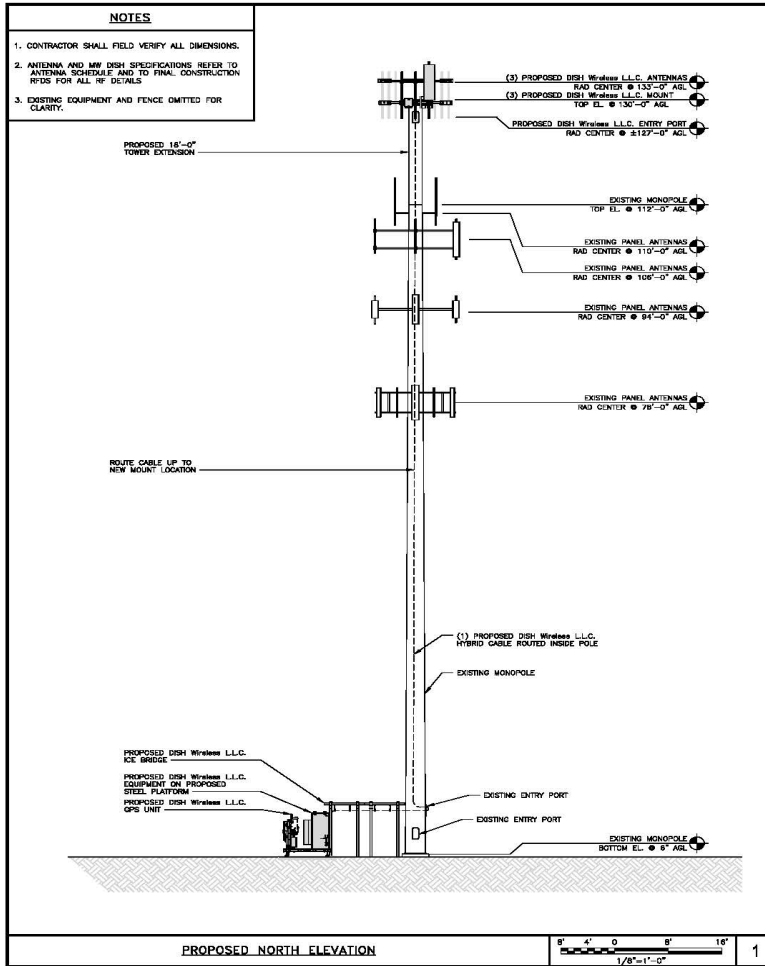
Site Photos-Site Context





Imagery ©2022 Google, Map data ©2022 United States Terms Privacy Send feedback 200 ft

Elevation



ANTENNA SCHEDULE

SECTOR	POSITION	EXISTING OR PROPOSED	ANTENNA				TRANSMISSION CABLE
			MANUFACTURER - MODEL NUMBER	TECHNOLOGY	SIZE (HxW)	AZIMUTH	
ALPHA	A1	PROPOSED	COMMSCOPE FWW-65B-R2	5G	72.00" x 19.6"	T.S.D. 133°-0°	(1) HIGH-CAPACITY HYBRID CABLE (180' LONG)
BETA	B1	PROPOSED	COMMSCOPE FWW-65B-R2	5G	72.00" x 19.6"	T.S.D. 133°-0°	
GAMMA	C1	PROPOSED	COMMSCOPE FWW-65B-R2	5G	72.00" x 19.6"	T.S.D. 133°-0°	

SECTOR	POSITION	RRH		NOTES
		MANUFACTURER - MODEL NUMBER	TECHNOLOGY	
ALPHA	A1	FLUITSU - TA08025-8604	5G	1. CONTRACTOR TO REFER TO FINAL CONSTRUCTION REFS FOR ALL RE DETAILS. 2. ANTENNA AND RRH MODELS MAY CHANGE DUE TO EQUIPMENT AVAILABILITY. ALL EQUIPMENT CHANGES MUST BE APPROVED AND REMAIN IN COMPLIANCE WITH THE PROPOSED DESIGN AND STRUCTURAL ANALYSIS.
BETA	B1	FLUITSU - TA08025-8604	5G	
BETA	B1	FLUITSU - TA08025-8604	5G	
GAMMA	C1	FLUITSU - TA08025-8604	5G	
GAMMA	C1	FLUITSU - TA08025-8604	5G	
GAMMA	C1	FLUITSU - TA08025-8604	5G	

NO SCALE

5701 SOUTH SANTA FE DRIVE
LITTLETON, CO 80120

AMERICAN TOWER
100 PRESIDENTIAL WAY
WOBURN, MA 01801

B+T GRP
1778 S. BOLDER
SUITE 300
TELESCOPE DRIVE
P.O. BOX 600
BRIGHTON, CO 80601
www.btgrp.com

B&T ENGINEERING, INC.
4011
Expires 12/31/21

IT IS A VIOLATION OF LAW FOR ANY PERSON UNLESS THEY ARE ACTING UNDER THE DIRECTION OF A LICENSED PROFESSIONAL ENGINEER TO ALTER THIS DOCUMENT.

DRAWN BY: C-HECKED BY: APPROVED BY:
NA GLS GLS

RFDS REV # : N/A

CONSTRUCTION DOCUMENTS

SUBMITTALS

REV	DATE	DESCRIPTION
A	4/4/21	ISSUED FOR REVIEW
B	8/16/21	ISSUED FOR REVIEW
C	10/14/21	ISSUED FOR CONSTRUCTION

A&C PROJECT NUMBER
151298.001.01

DISH Wireless L.L.C.
PROJECT INFORMATION
NASDF00038A
8905 US HIGHWAY 42
PROSPECT, KY 40059

SHEET TITLE
ELEVATION, ANTENNA LAYOUT AND SCHEDULE

SHEET NUMBER
A-2

Staff Finding

- Staff finds that the requested waiver is adequately justified and meets the standard of review.

Required Actions

- Recommendation to the City of Prospect to APPROVE or DENY the Waiver