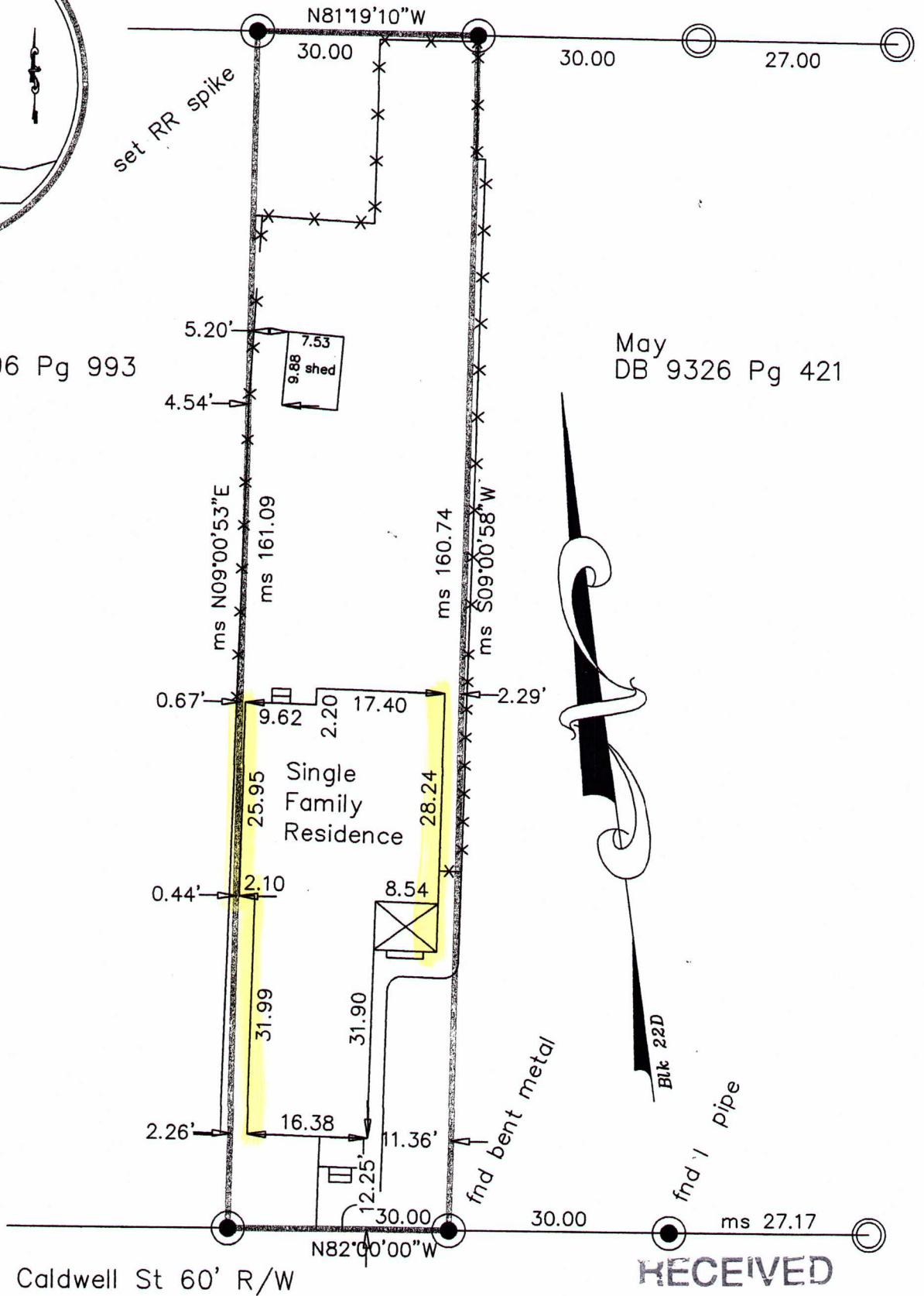


20' Alley

Trover
DB 11096 Pg 993

May
DB 9326 Pg 421



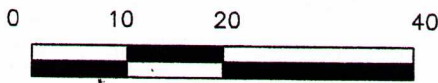
○ fnd l p/c
#3570

● set l p/c
#3125
unless noted

Caldwell St 60' R/W

RECEIVED

JUL 23 2019



GRAPHIC SCALE 1=20

PLANNING &
DESIGN SERVICES

LAND SURVEYOR'S CERTIFICATE

I hereby certify that this plat and survey were made under my direct supervision on 7-16-19 and that the angular and linear measurements, as witnessed by monuments, shown hereon, are true and correct to the best of my knowledge and belief.

- SURVEY CLASS "Urban" -

This survey meets or exceeds the minimum standards of governing authorities.

MIKE SEELY & ASSOCIATES
P.O. BOX 13768
LOUISVILLE, KY. 40261
(502) 643-1765

- BOUNDARY SURVEY -

FOR: Brohannon, LLC

LOCATION: 1015 E. Caldwell Street
Louisville, KY 40204

RECORD SOURCES: Bik 22D Lot 75
DB 10895 Pg 560

COUNTY: JEFFERSON

SCALE: 1=30 DATE: 7-21-19



Michael D. Seely
Licensed Land Surveyor #3125

19-VARIANCE-0027