

ORDINANCE NO. 042, SERIES 2014

AN ORDINANCE CHANGING THE ZONING FROM R-5A MULTI-FAMILY RESIDENTIAL TO PRD PLANNED RESIDENTIAL DEVELOPMENT ON PROPERTIES LOCATED ALONG SOUTH WATTERSON TRAIL, VILLA SPRING DRIVE, PARKER GRANT COURT AND BRETT FRAZIER DRIVE CONTAINING 36.904 ACRES AND BEING IN LOUISVILLE METRO (CASE NO. 13ZONE1015).

SPONSORED BY: COUNCILWOMAN MADONNA FLOOD

WHEREAS, the Legislative Council of the Louisville/Jefferson County Metro Government (the "Council") has considered the evidence presented at the public hearing held by the Louisville Metro Planning Commission and the recommendations of the Planning Commission and its staff as set out in the minutes and records of the Planning Commission in Case No. 13ZONE1015; and,

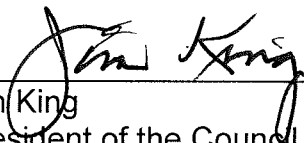
WHEREAS, the Council concurs in and adopts the findings of the Planning Commission for the zoning change in Case No. 13ZONE1015 and approves and accepts the recommendations of the Planning Commission as set out in said minutes and records;

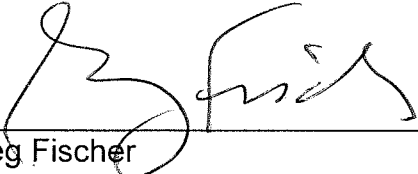
NOW THEREFORE BE IT ORDAINED BY THE LEGISLATIVE COUNCIL OF THE LOUISVILLE/JEFFERSON COUNTY METRO GOVERNMENT AS FOLLOWS:

Section I: That the zoning of the properties located along South Watterson Trail, Villa Spring Drive, Parker Grant Court and Brett Frazier Drive containing 36.904 acres and being in Louisville Metro, as more particularly described in the minutes and records of the Planning Commission in Case No. 13ZONE1015, is hereby changed from R-5A Multi-Family Residential to PRD Planned Residential Development; provided, however, said property shall be subject to the binding elements as set forth in the minutes of the Planning Commission in Case No. 13ZONE1015.

Section II: This Ordinance shall take effect upon passage and approval.


H. Stephen Ott
Metro Council Clerk


Jim King
President of the Council


Greg Fischer
Mayor

Approved: 3/19/14
Date

APPROVED AS TO FORM AND LEGALITY:

Michael J. O'Connell
Jefferson County Attorney

By: 

**LOUISVILLE METRO COUNCIL
READ AND PASSED**
March 13, 2014

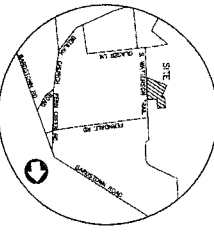
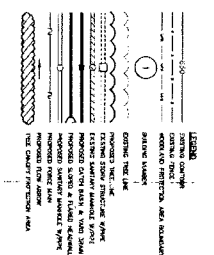
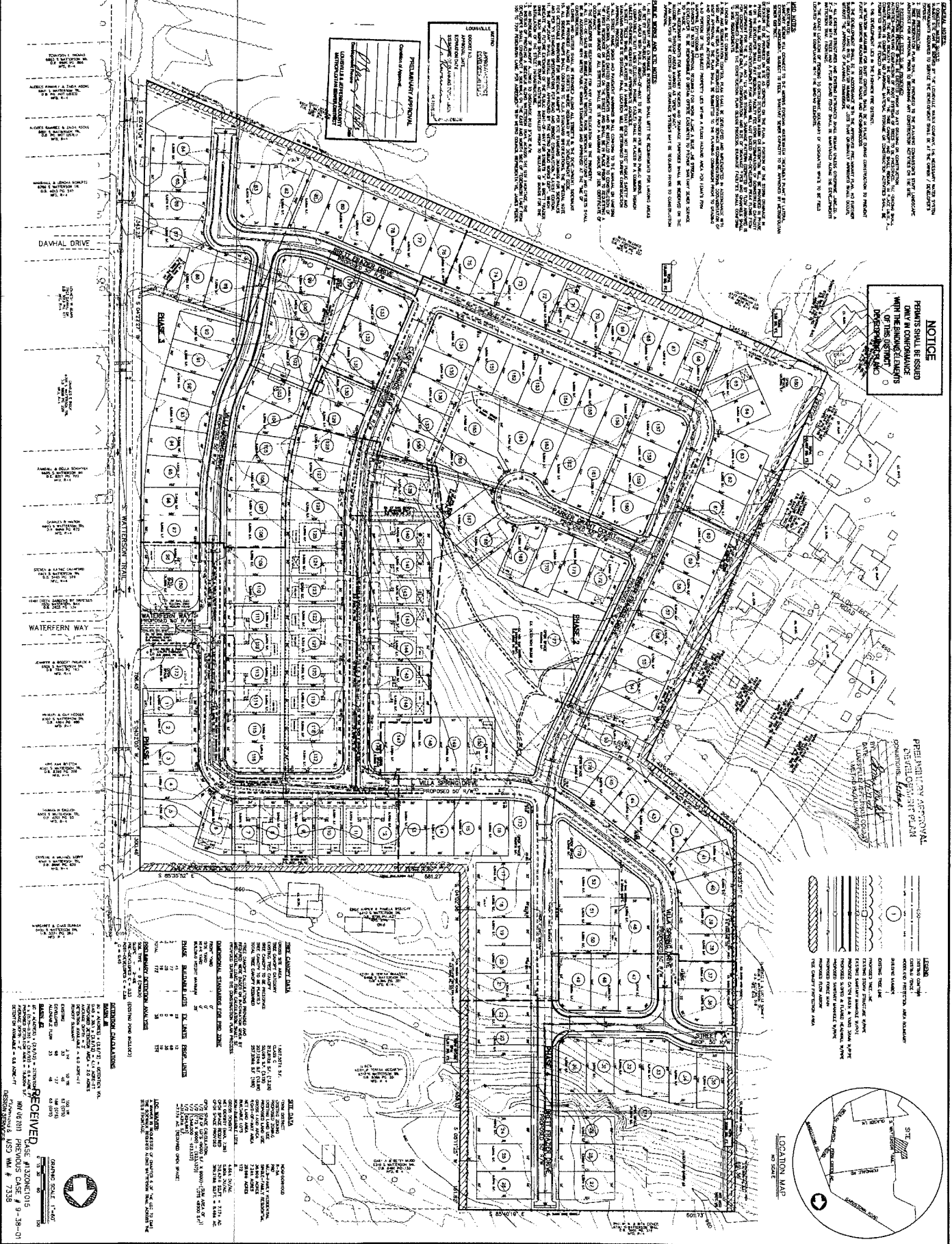
GENERAL NOTES:

1. THE DISTRICT DEVELOPMENT SHALL BE CONFORMANT WITH THE ZONING AND SUBDIVISION MAPS OF THE CITY OF LOUISVILLE, KENTUCKY.
2. THE DISTRICT DEVELOPMENT SHALL BE CONFORMANT WITH THE DISTRICT DEVELOPMENT ACT AND THE DISTRICT DEVELOPMENT REGULATIONS OF THE CITY OF LOUISVILLE, KENTUCKY.
3. THE DISTRICT DEVELOPMENT SHALL BE CONFORMANT WITH THE DISTRICT DEVELOPMENT ACT AND THE DISTRICT DEVELOPMENT REGULATIONS OF THE CITY OF LOUISVILLE, KENTUCKY.
4. THE DISTRICT DEVELOPMENT SHALL BE CONFORMANT WITH THE DISTRICT DEVELOPMENT ACT AND THE DISTRICT DEVELOPMENT REGULATIONS OF THE CITY OF LOUISVILLE, KENTUCKY.
5. THE DISTRICT DEVELOPMENT SHALL BE CONFORMANT WITH THE DISTRICT DEVELOPMENT ACT AND THE DISTRICT DEVELOPMENT REGULATIONS OF THE CITY OF LOUISVILLE, KENTUCKY.
6. THE DISTRICT DEVELOPMENT SHALL BE CONFORMANT WITH THE DISTRICT DEVELOPMENT ACT AND THE DISTRICT DEVELOPMENT REGULATIONS OF THE CITY OF LOUISVILLE, KENTUCKY.
7. THE DISTRICT DEVELOPMENT SHALL BE CONFORMANT WITH THE DISTRICT DEVELOPMENT ACT AND THE DISTRICT DEVELOPMENT REGULATIONS OF THE CITY OF LOUISVILLE, KENTUCKY.
8. THE DISTRICT DEVELOPMENT SHALL BE CONFORMANT WITH THE DISTRICT DEVELOPMENT ACT AND THE DISTRICT DEVELOPMENT REGULATIONS OF THE CITY OF LOUISVILLE, KENTUCKY.
9. THE DISTRICT DEVELOPMENT SHALL BE CONFORMANT WITH THE DISTRICT DEVELOPMENT ACT AND THE DISTRICT DEVELOPMENT REGULATIONS OF THE CITY OF LOUISVILLE, KENTUCKY.
10. THE DISTRICT DEVELOPMENT SHALL BE CONFORMANT WITH THE DISTRICT DEVELOPMENT ACT AND THE DISTRICT DEVELOPMENT REGULATIONS OF THE CITY OF LOUISVILLE, KENTUCKY.

NOTICE
 PERMITS SHALL BE ISSUED
 ONLY IN CONFORMANCE
 WITH THE DISTRICT DEVELOPMENT
 ACT AND THE DISTRICT DEVELOPMENT
 REGULATIONS OF THE CITY OF
 LOUISVILLE, KENTUCKY.

LOUISVILLE
 DISTRICT DEVELOPMENT
 ACT AND REGULATIONS

PRELIMINARY APPROVAL
 DISTRICT DEVELOPMENT
 ACT AND REGULATIONS



GENERAL NOTES:

1. THE DISTRICT DEVELOPMENT SHALL BE CONFORMANT WITH THE ZONING AND SUBDIVISION MAPS OF THE CITY OF LOUISVILLE, KENTUCKY.
2. THE DISTRICT DEVELOPMENT SHALL BE CONFORMANT WITH THE DISTRICT DEVELOPMENT ACT AND THE DISTRICT DEVELOPMENT REGULATIONS OF THE CITY OF LOUISVILLE, KENTUCKY.
3. THE DISTRICT DEVELOPMENT SHALL BE CONFORMANT WITH THE DISTRICT DEVELOPMENT ACT AND THE DISTRICT DEVELOPMENT REGULATIONS OF THE CITY OF LOUISVILLE, KENTUCKY.
4. THE DISTRICT DEVELOPMENT SHALL BE CONFORMANT WITH THE DISTRICT DEVELOPMENT ACT AND THE DISTRICT DEVELOPMENT REGULATIONS OF THE CITY OF LOUISVILLE, KENTUCKY.
5. THE DISTRICT DEVELOPMENT SHALL BE CONFORMANT WITH THE DISTRICT DEVELOPMENT ACT AND THE DISTRICT DEVELOPMENT REGULATIONS OF THE CITY OF LOUISVILLE, KENTUCKY.
6. THE DISTRICT DEVELOPMENT SHALL BE CONFORMANT WITH THE DISTRICT DEVELOPMENT ACT AND THE DISTRICT DEVELOPMENT REGULATIONS OF THE CITY OF LOUISVILLE, KENTUCKY.
7. THE DISTRICT DEVELOPMENT SHALL BE CONFORMANT WITH THE DISTRICT DEVELOPMENT ACT AND THE DISTRICT DEVELOPMENT REGULATIONS OF THE CITY OF LOUISVILLE, KENTUCKY.
8. THE DISTRICT DEVELOPMENT SHALL BE CONFORMANT WITH THE DISTRICT DEVELOPMENT ACT AND THE DISTRICT DEVELOPMENT REGULATIONS OF THE CITY OF LOUISVILLE, KENTUCKY.
9. THE DISTRICT DEVELOPMENT SHALL BE CONFORMANT WITH THE DISTRICT DEVELOPMENT ACT AND THE DISTRICT DEVELOPMENT REGULATIONS OF THE CITY OF LOUISVILLE, KENTUCKY.
10. THE DISTRICT DEVELOPMENT SHALL BE CONFORMANT WITH THE DISTRICT DEVELOPMENT ACT AND THE DISTRICT DEVELOPMENT REGULATIONS OF THE CITY OF LOUISVILLE, KENTUCKY.

DETAILED DISTRICT DEVELOPMENT & PRELIMINARY PLAN
SPRING VILLA
 6535 VILLA SPRING DRIVE
 TAX BLOCK: 0637, LOT: 0004
 D.B. 9978, PG. 36

OWNFR
 CITIZENS UNION BANK
 P O BOX 189
 SHELBYVILLE, KY. 40066

MSA
 Mindel, Scott & Associates, Inc.
 Planning Engineering Surveying Landscape Architecture
 1014 Westwood Lane, Louisville, KY 40203
 Phone: (502) 452-1100 Fax: (502) 452-1101

RECEIVED
 DISTRICT DEVELOPMENT
 ACT AND REGULATIONS
 DISTRICT DEVELOPMENT
 ACT AND REGULATIONS

1 OF 1