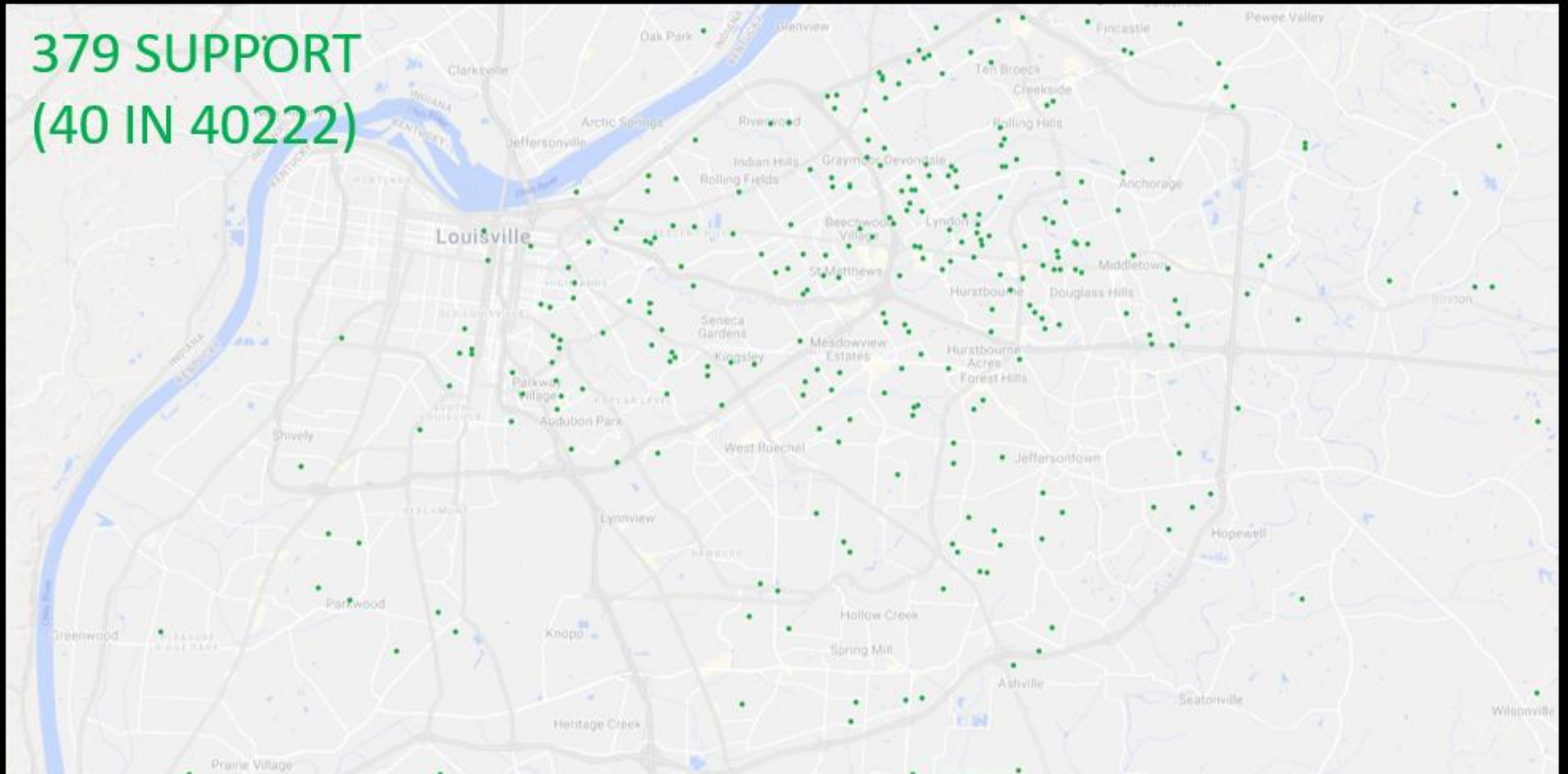


# **#STOPGOLF**

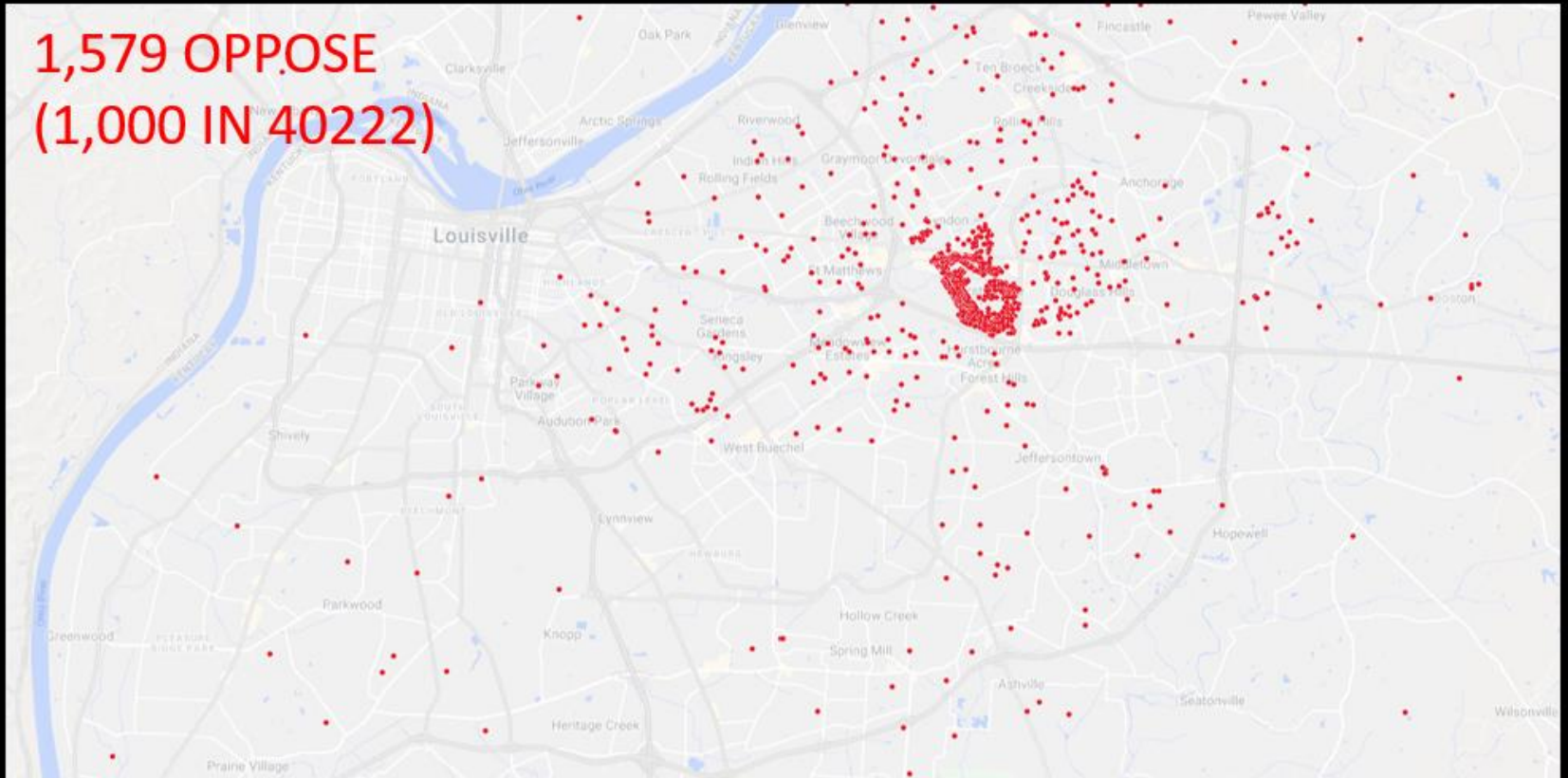


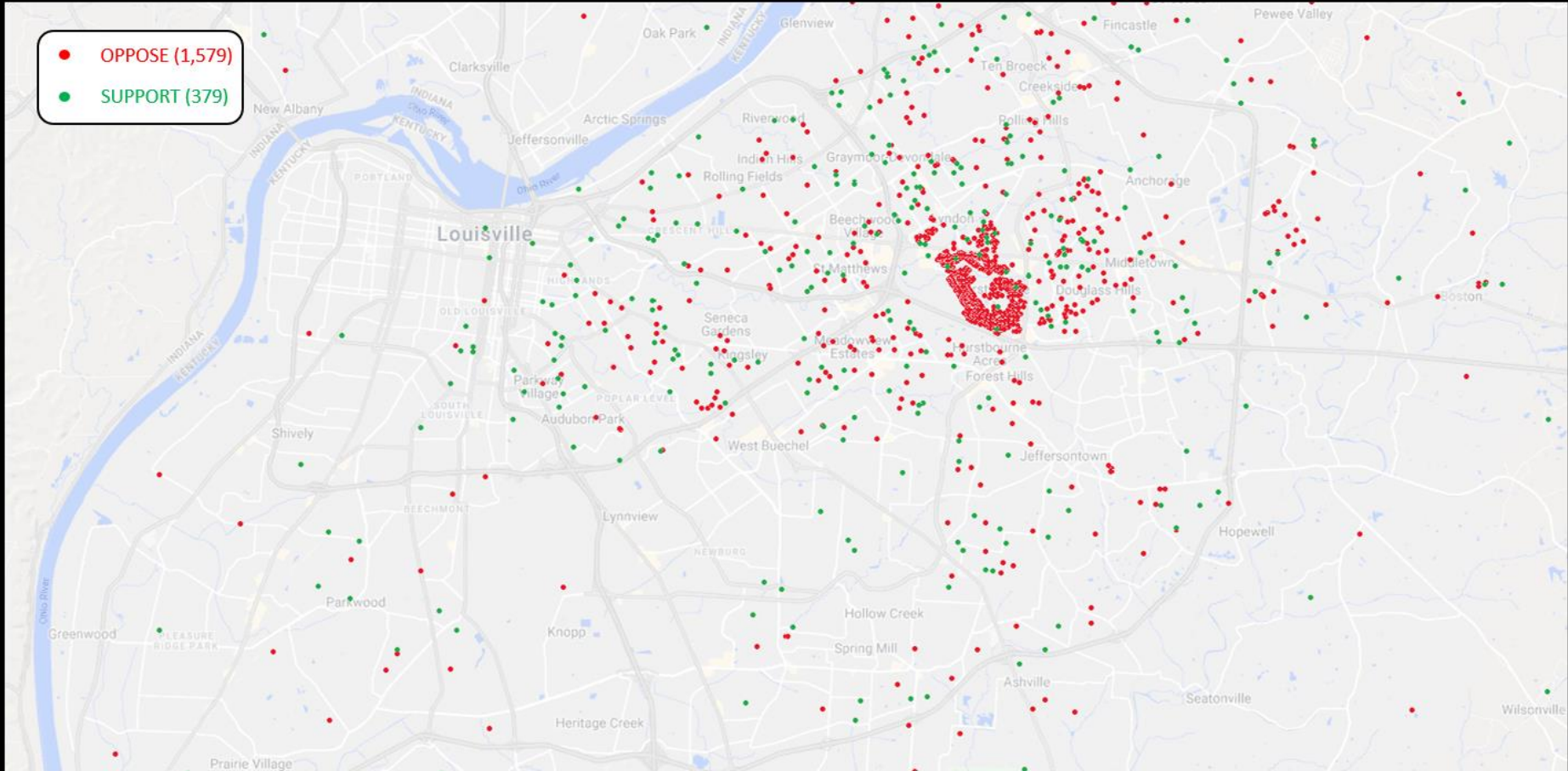
**LIGHT POLUTION**

379 SUPPORT  
(40 IN 40222)

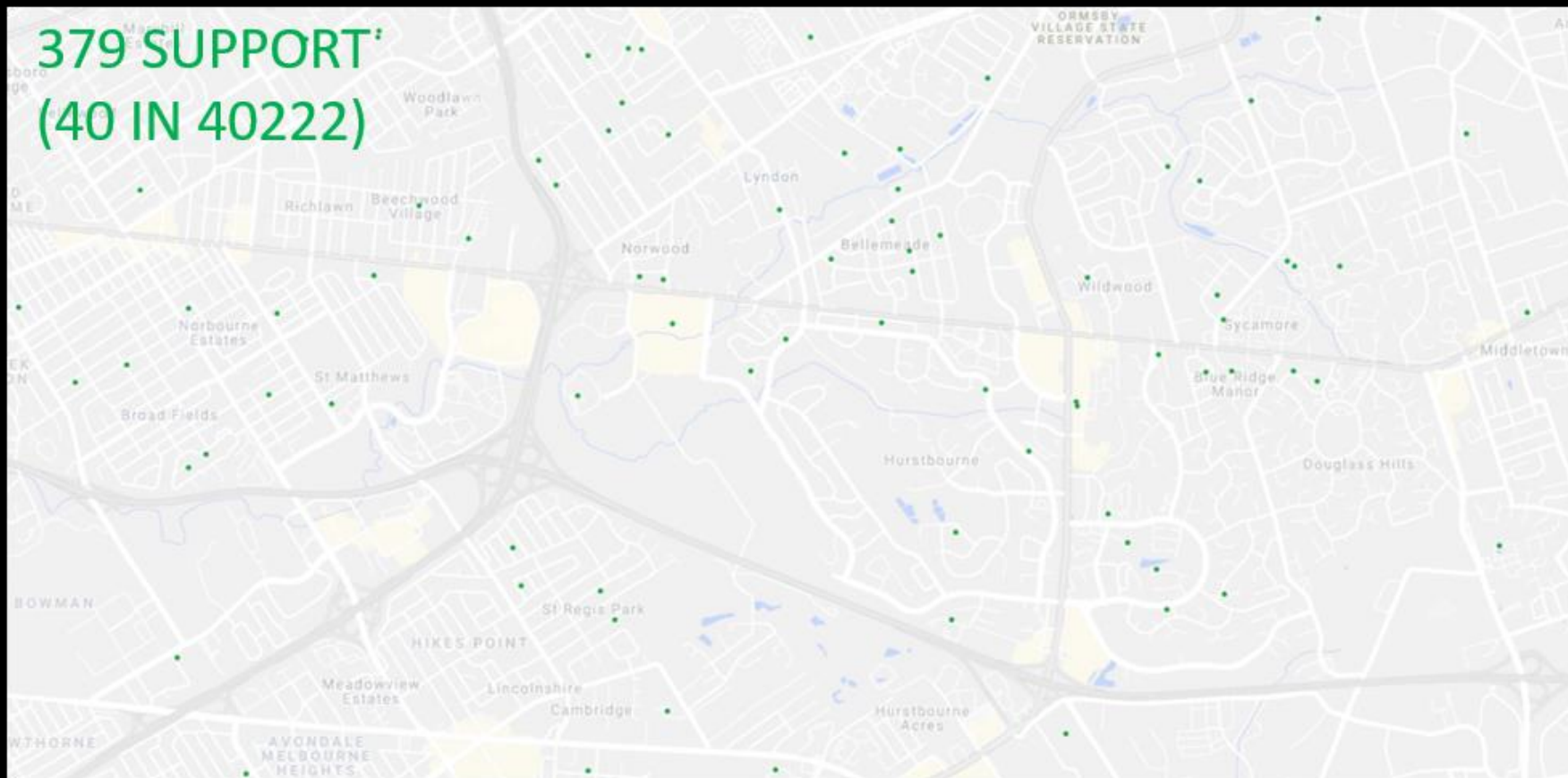


**1,579 OPPOSE**  
**(1,000 IN 40222)**

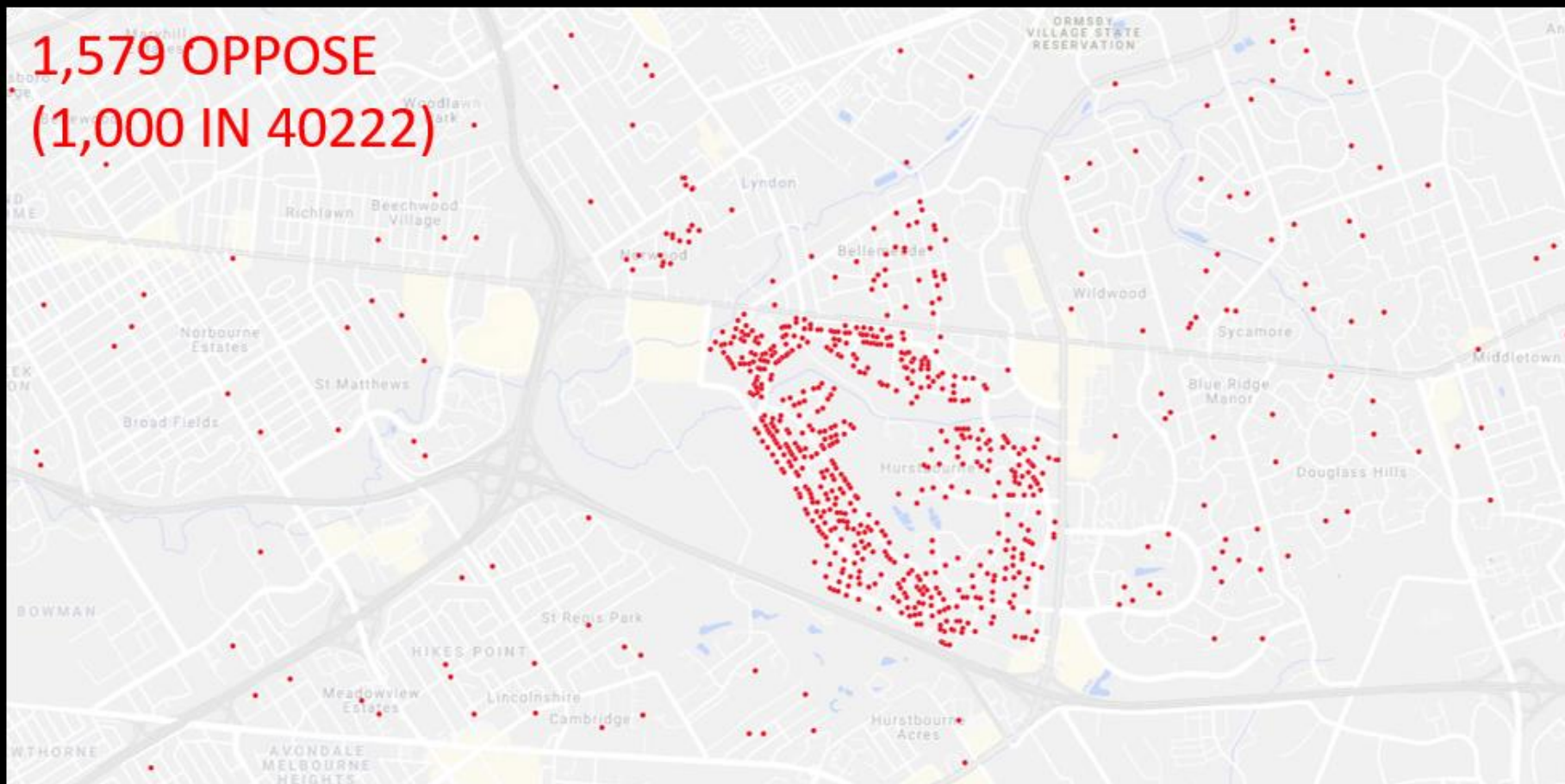


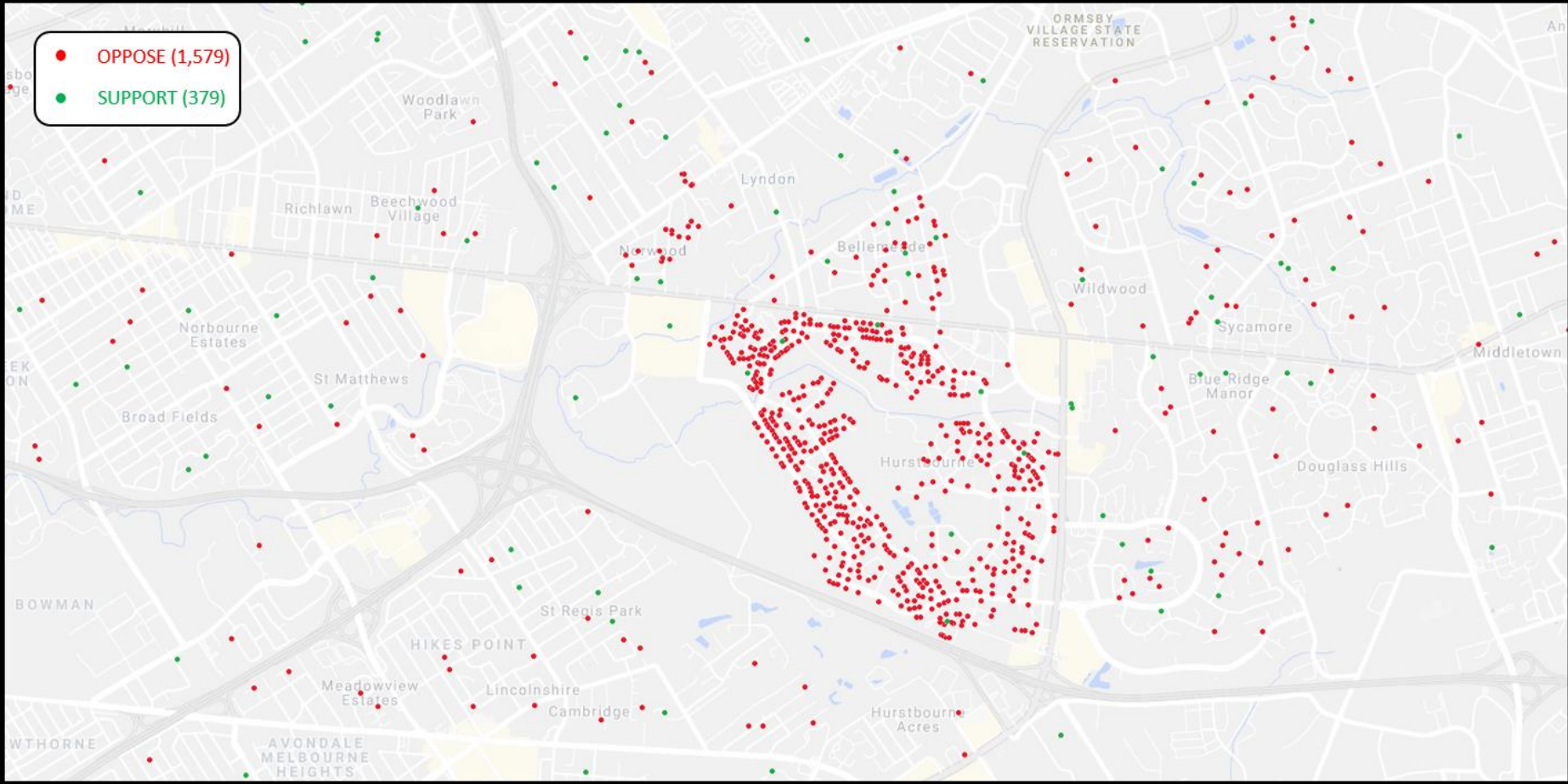


379 SUPPORT'  
(40 IN 40222)



**1,579 OPPOSE**  
**(1,000 IN 40222)**





VIDEO

## Top Golf lighting concerns

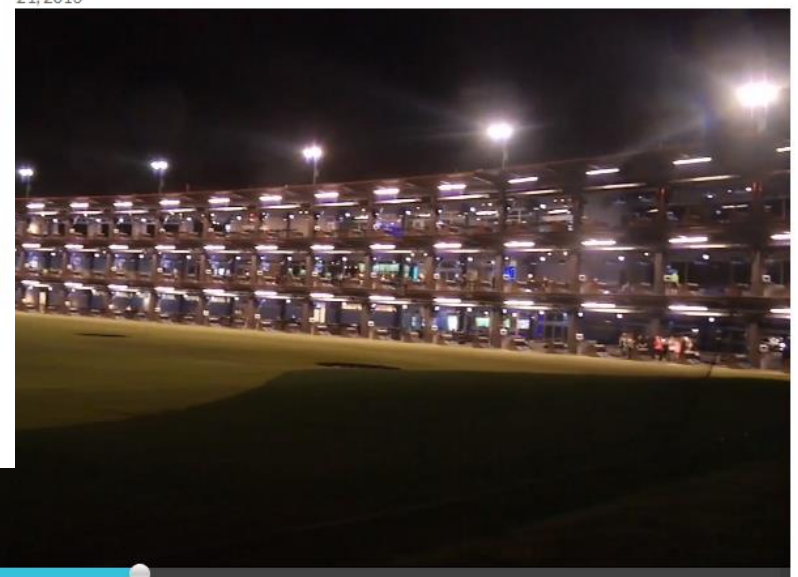
Posted: 12:25 AM, October 21, 2016  
Updated: 12:25 AM, October 21, 2016



Facebook, Twitter, Email, and Share icons. Shares: 0

## lighting concerns

1, 2016  
21, 2016



Video player controls showing a progress bar at 0:53 / 2:37. Includes play/pause, volume, and share icons.

Facebook, Twitter, Email, and Share icons. Shares: 0



**#STOPGOLF**

Topgolf Orlando with “New & Better” Lighting



**#STOPGOLF**



**#STOPGOLF**



**#STOPGOLF**



**#STOPGOLF**



**#STOPGOLF**



**#STOPGOLF**



# Topgolf Locations with New Lighting



**The Colony (Dallas), Texas**



**Pittsburgh**



**St. Louis**



**Orlando**



# Topgolf Locations with New Lighting



**The Colony (Dallas), Texas**



**Pittsburgh**

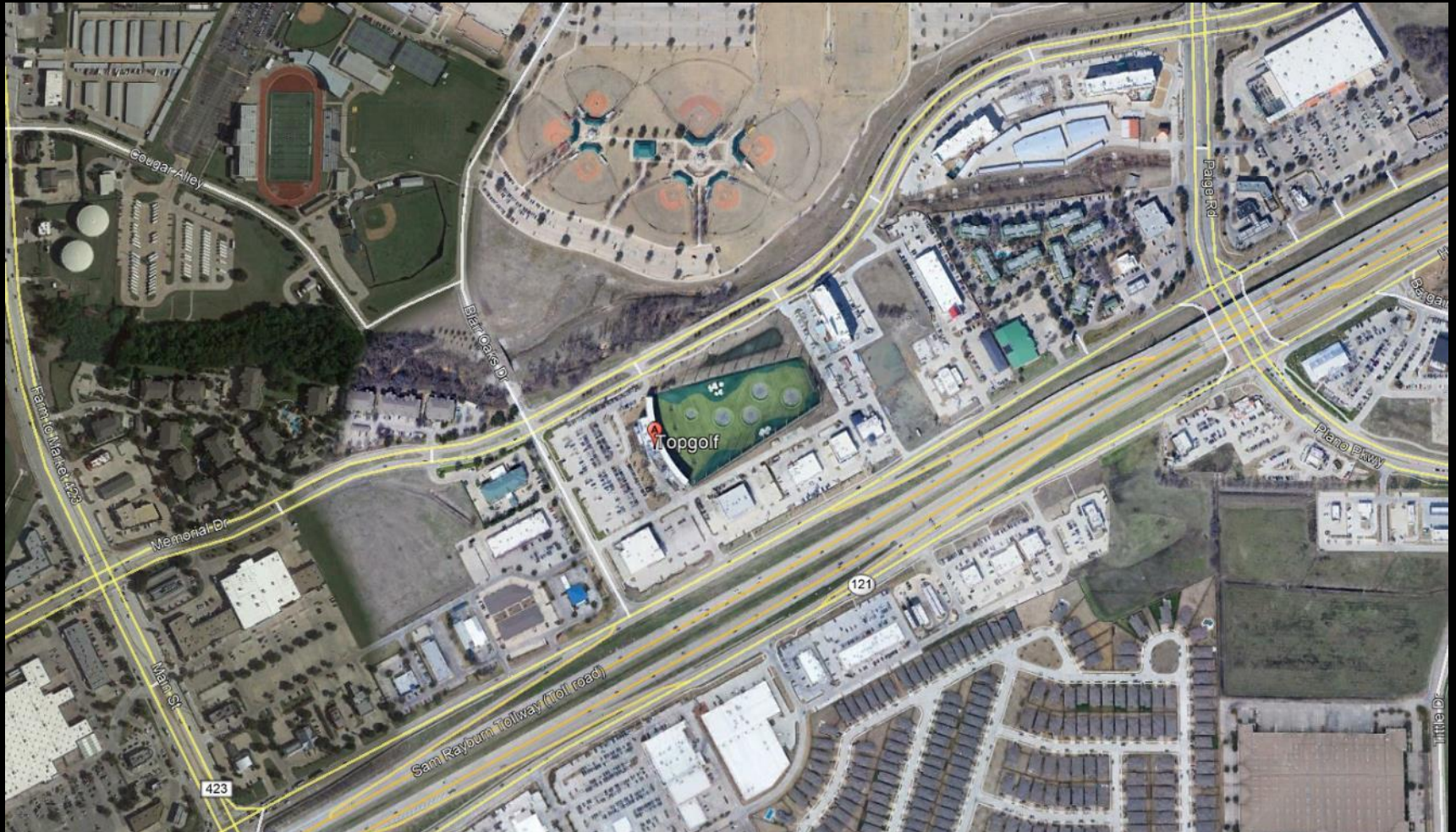


**St. Louis**



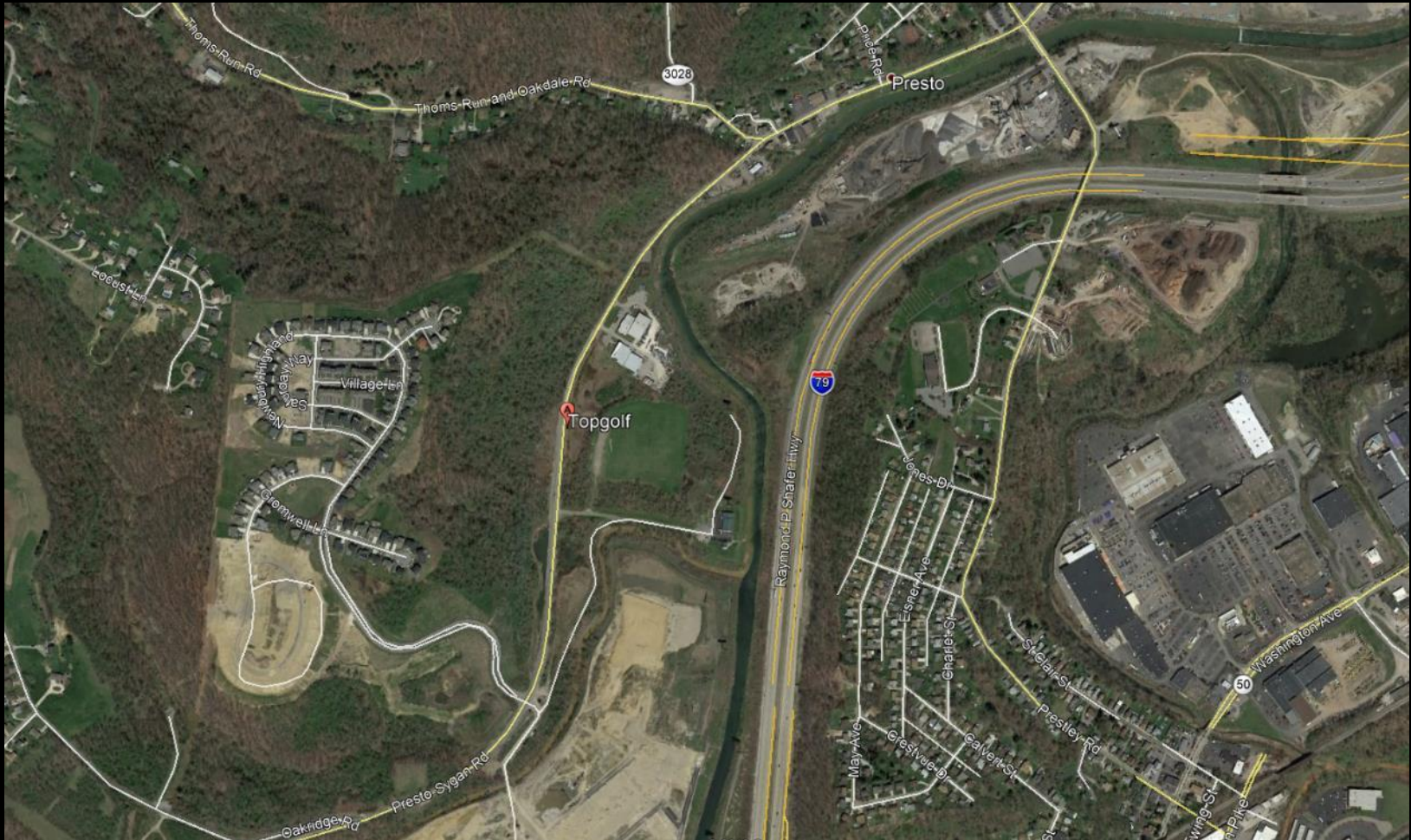
**Orlando**

# Topgolf Locations with New Lighting



The Colony (Dallas), Texas

# Topgolf Locations with New Lighting



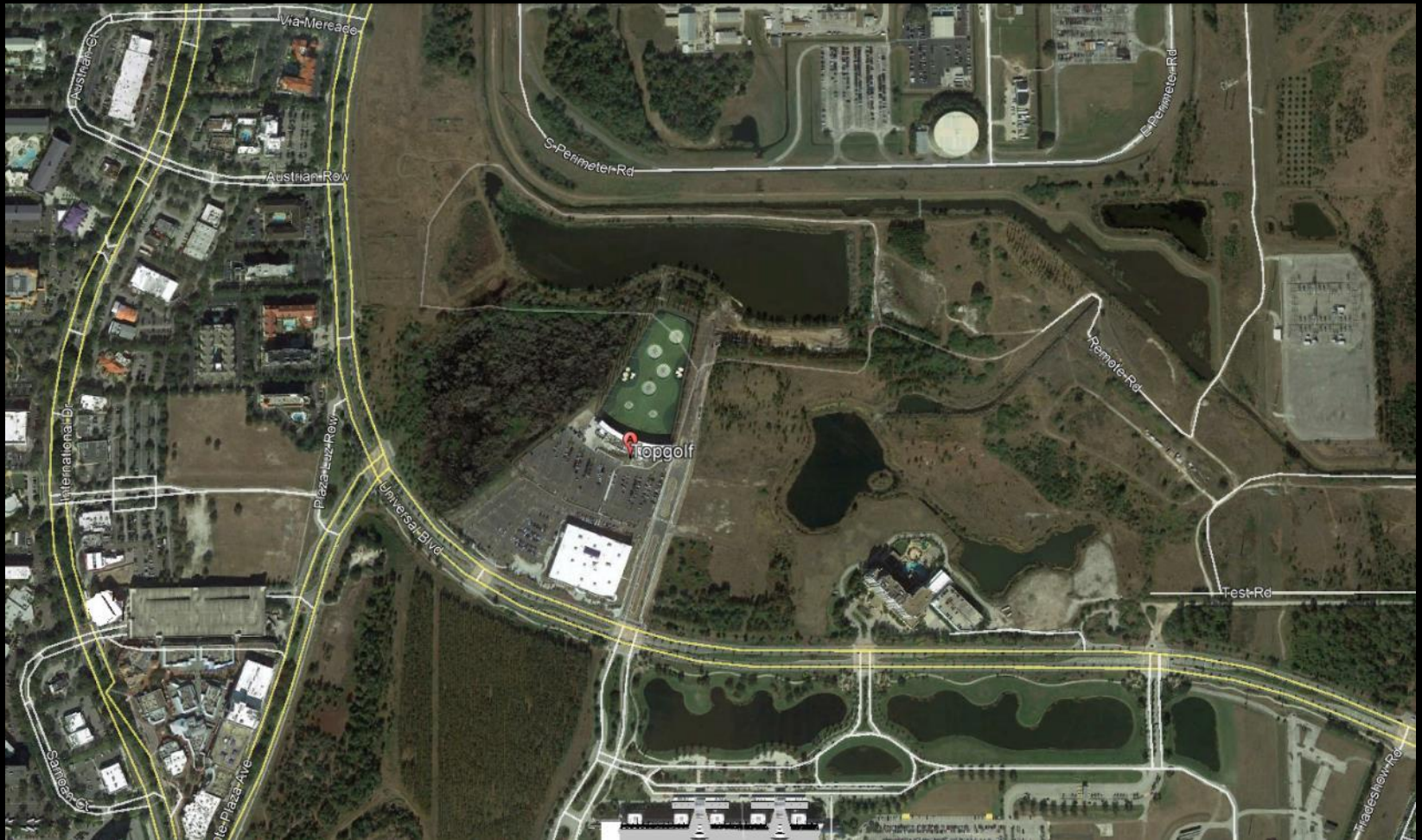
Pittsburgh

# Topgolf Locations with New Lighting



**St. Louis**

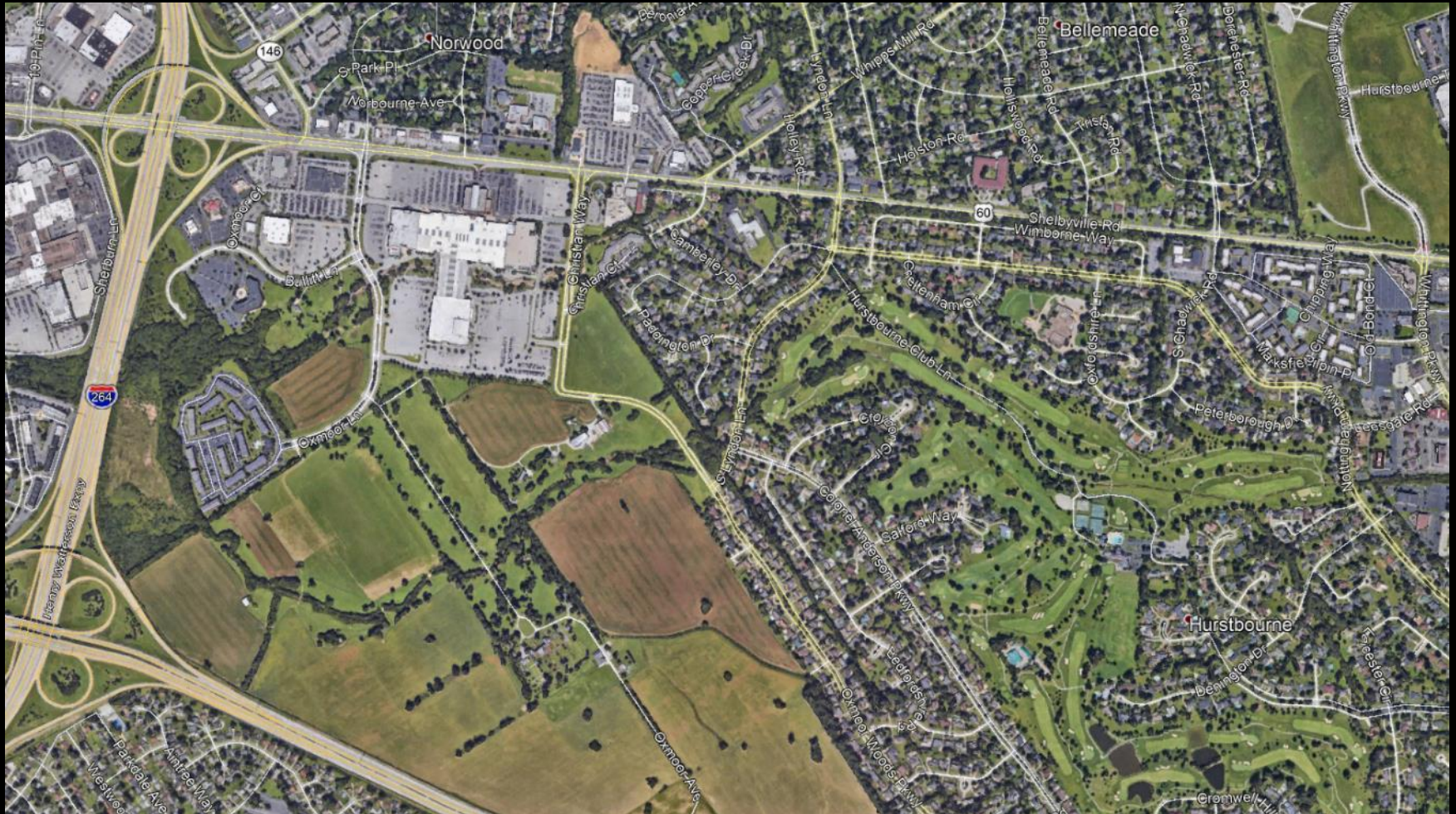
# Topgolf Locations with New Lighting



Orlando

# #STOPGOLF

Topgolf doesn't know how the new lighting system will function next to a neighborhood, because they've never installed the lights at a location next to a neighborhood.



**#STOPGOLF**

# Topgolf Locations with New Lighting



**St. Louis**



**Orlando**

### LDC 4.1.3 Lighting

The purpose of this section is to ... reduce the effects of light trespass and glare, provide clear guidelines for the installation of outdoor lighting to maintain and compliment the community's character ...



**#STOPGOLF**



**St. Louis**

### LDC 4.1.3 Lighting

**All public and private outdoor lighting shall be in conformance with the requirements established by this Regulation.**

**All luminaires shall be aimed, directed, or focused such as to not ... create glare perceptible to persons operating motor vehicles on public streets or right-of-way.**

**#STOPGOLF**



**#STOPGOLF**

Qualite Q-LED Gamechanger 500



### LDC 4.1.3 Lighting

All public and private outdoor lighting shall be in conformance with the requirements established by this Regulation.

**Within the Regional Center, all spot luminaires rated at a total of more than 900 lumens shall be mounted at a height equal to or less than thirty (30) feet.**

**LDC 4.1.3 Lighting**

**All public and private outdoor lighting shall be in conformance with the requirements established by this Regulation.**



**Luminaires below canopies shall be full cutoff and utilize flat lenses...**

**All fixtures in all form districts that emit more than 3,500 lumens shall be fully-shielded luminaires.**

**#STOPGOLF**



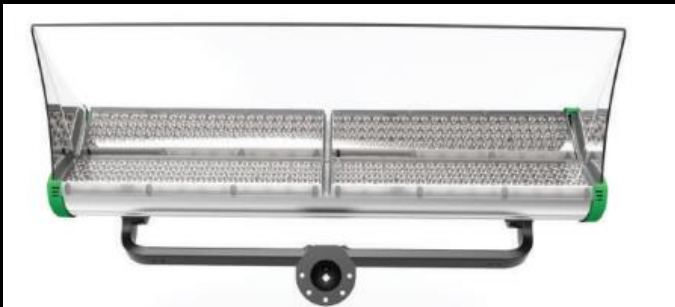
## Appendix 4A Acceptable Luminaires

Type of Fixture	Watts (Lumens)	Picture/Diagram
Cobra	175 (8,000) 250 (13,000) 400 (25,000) 1,000 (60,000)	
Floodlight	400 (25,000) 1,000 (60,000)	

Source: Louisville Gas & Electric Company

Acceptable Luminaires:

Unacceptable Luminaire:  
Qualite Q-LED Gamechanger 500





**#STOPGOLF**



**St. Louis**

**#STOPGOLF**



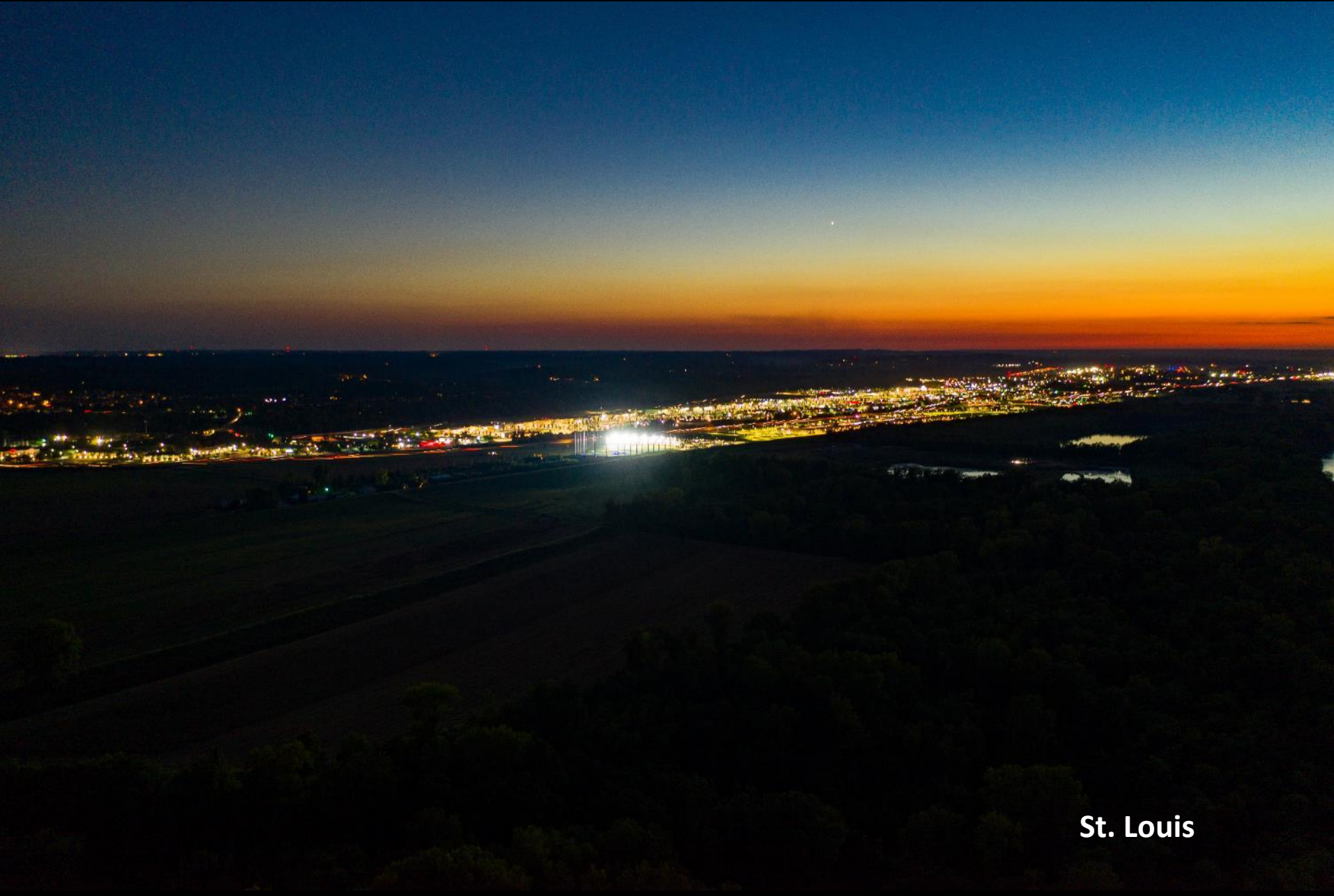
**St. Louis**

**#STOPGOLF**



**St. Louis**

**#STOPGOLF**



**St. Louis**

**#STOPGOLF**



**St. Louis**

**#STOPGOLF**



St. Louis

**#STOPGOLF**

St. Louis





# Cornerstone 2020 Comprehensive Plan



## CHARLOTTE, NC

Tanner Micheli, TopGolf spokesperson, "In the end, we've always come to a place that works for the community... **As far as lights and the impact on neighborhoods, we don't think it will have any impact because it will be pointing away from the neighborhood.**"

(TopGolf pulled out of this development after opposition from nearby Claybrooke neighborhood. TopGolf later developed on another site in the city.)

<https://www.bizjournals.com/charlotte/news/2017/06/13/topgolf-we-are-confident-we-wont-impact-neighbors.html>

<https://www.bizjournals.com/charlotte/news/2018/01/17/topgolf-anchored-development-among-rezoning.html>

## CARY, NC

AdrienneChance, TopGolf spokesperson, "**Unfortunately , however, as we were testing during due diligence, we became concerned about our ability to sufficiently mitigate the lighting and noise issues for the local neighborhood.** The last thing we want to be is a nuisance to the people living close to one of our locations."

(TopGolf pulled out of this development after opposition from nearby residents. While looking for another location in Cary, their competitor Drive Shack developed in the neighboring town of Raleigh)

<https://www.bizjournals.com/triangle/blog/real-estate/2015/08/topgolf-pulls-out-of-cary-towne-center-mall.html>

<https://www.newsobserver.com/news/business/article152877659.html>

**YES,** TopGolf will be **BRIGHT.**

**#STOPGOLF**

