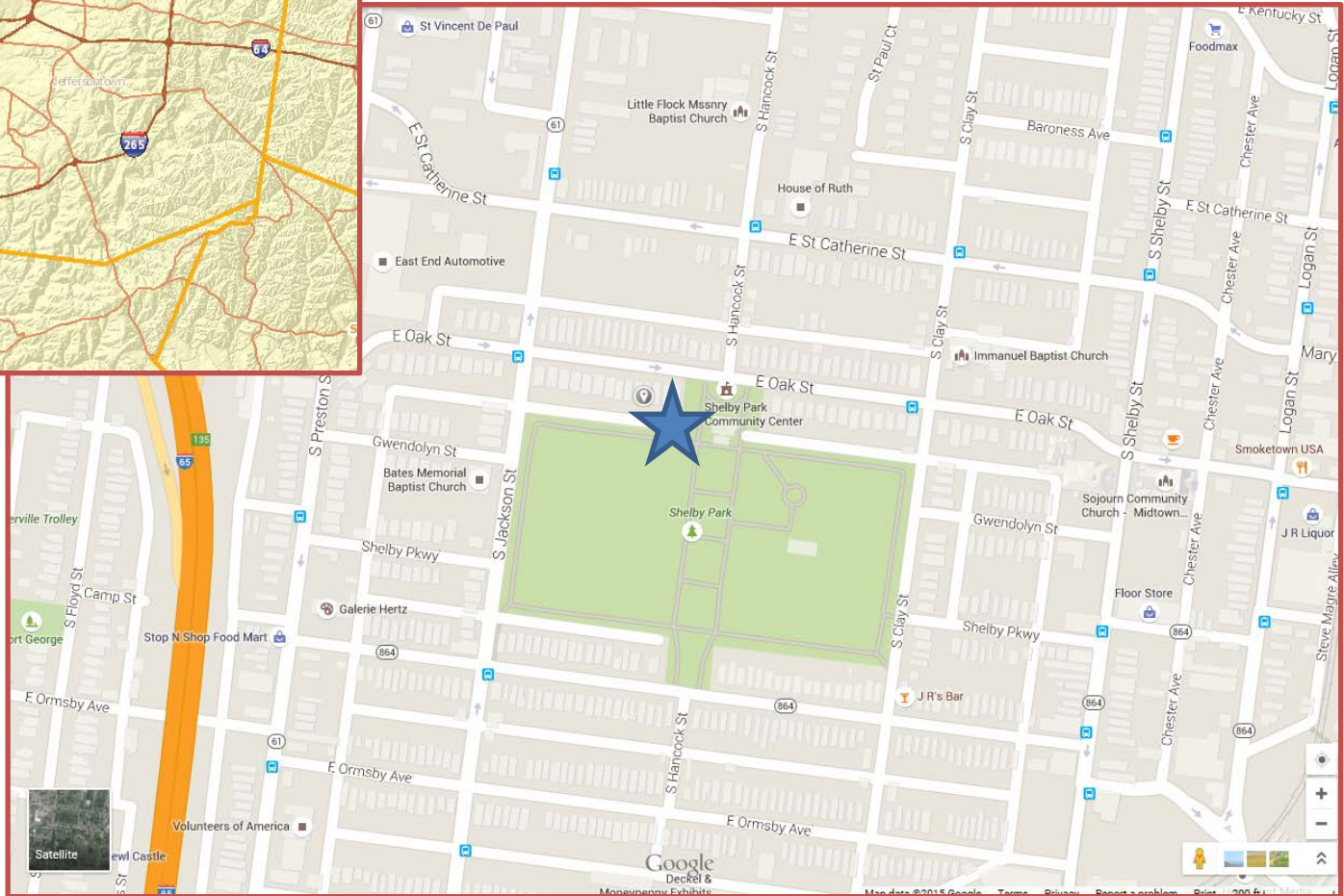
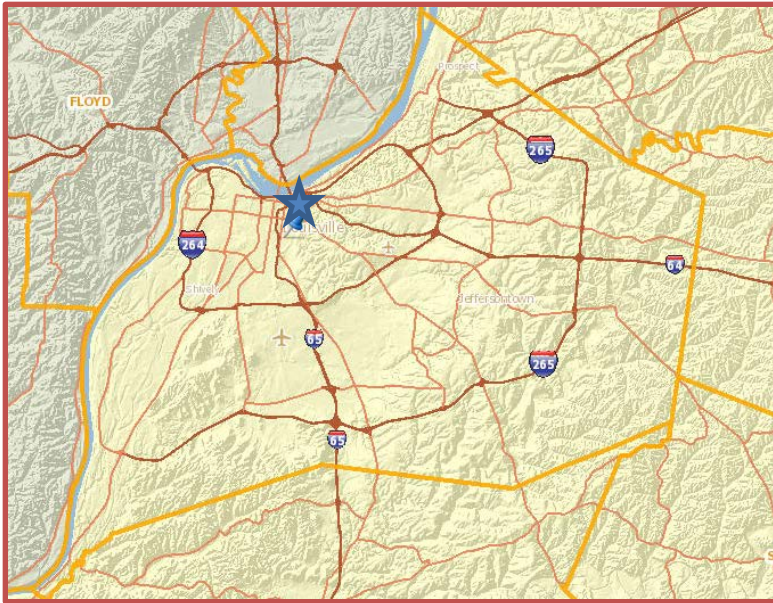


HOME Project –
NEW DIRECTIONS REHABILITATION of
524 E. Oak St. in SHELBY PARK

Develop Louisville
Office of Housing and Community Development
August 6, 2015



Project Location - 524 East Oak St. – Shelby Park Neighborhood



524 East Oak St. - BEFORE

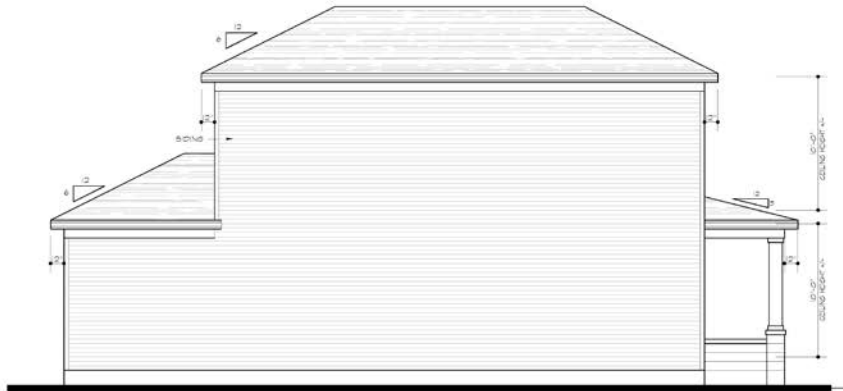
Exterior – Front



Exterior – Rear

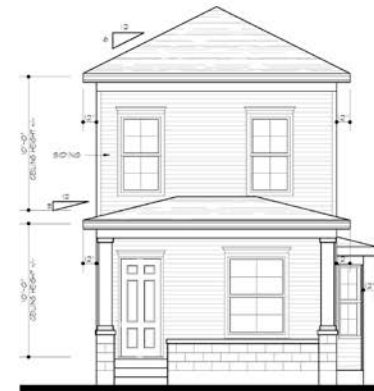


524 House Construction Plans



LEFT SIDE

SCALE: 1/4"=1'-0"



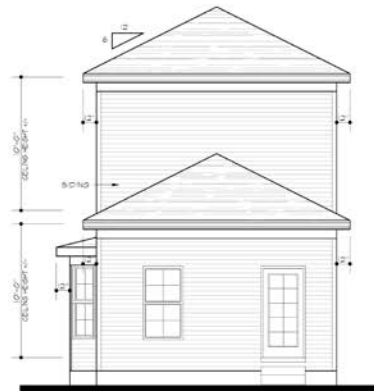
FRONT ELEVATION

SCALE: 1/4"=1'-0"



RIGHT SIDE

SCALE: 1/4"=1'-0"



REAR ELEVATION

SCALE: 1/4"=1'-0"



New Directions Redevelopment
Experience in Shelby Park



535 East Oak St. (Tree House) - BEFORE

BEFORE Exterior – Front and Rear



Exterior – East Side

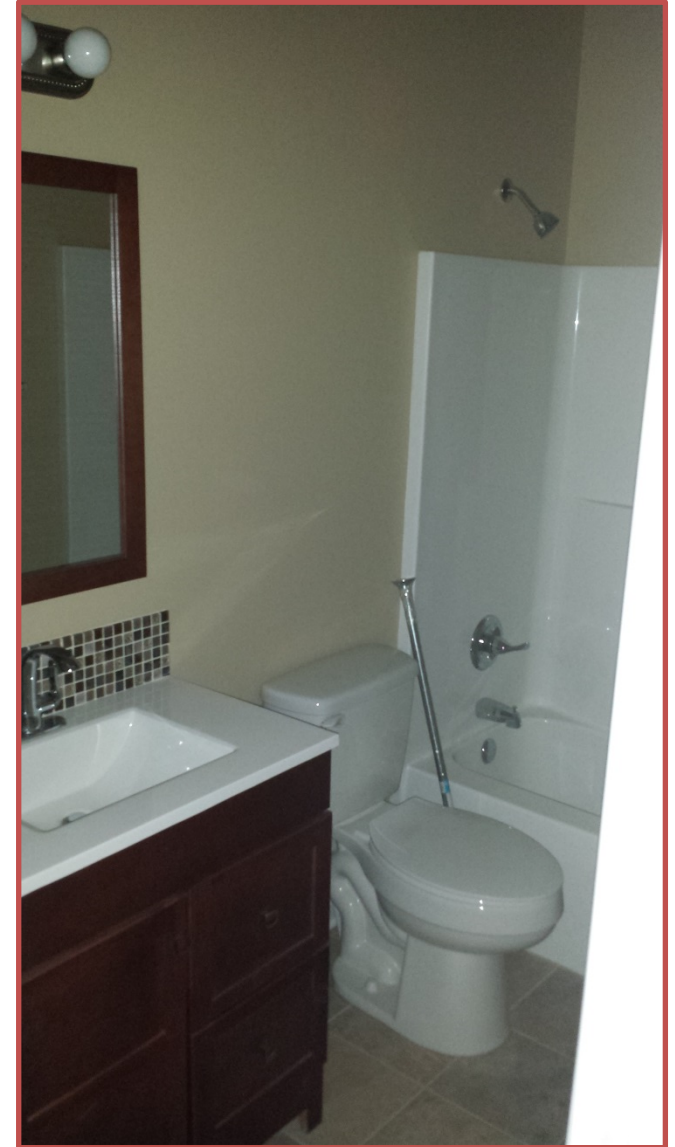


535 East Oak St. - AFTER New Construction

AFTER – Historic Character Retained;
Sold Today 8/6/15



Interior – 1 of 2 Bathrooms



527 East Oak St. - BEFORE

Siding Covered Up Rotting Foundation/Frame, Fire Damage, and Cardboard Siding



527 East Oak St. - AFTER Substantial Rehab

AFTER – Uncovered Historic Detail; New windows, siding, and roof; Cleaned all LEAD.



Interior – Redesigned layout with 3 bdrm; 2 bths



New Directions' NSP 1 Homeownership Project in the Shelby Park Neighborhood

500 Block E.
St Catherine
St.

BEFORE



500 Block E.
St Catherine
St.

AFTER

