

**Rezoning Written Description**  
**16ZONE1012**  
**Glenview Trust Office Building**  
**5900 U.S. Highway 42 (Brownsboro Road)**  
(Date: March 28, 2016)

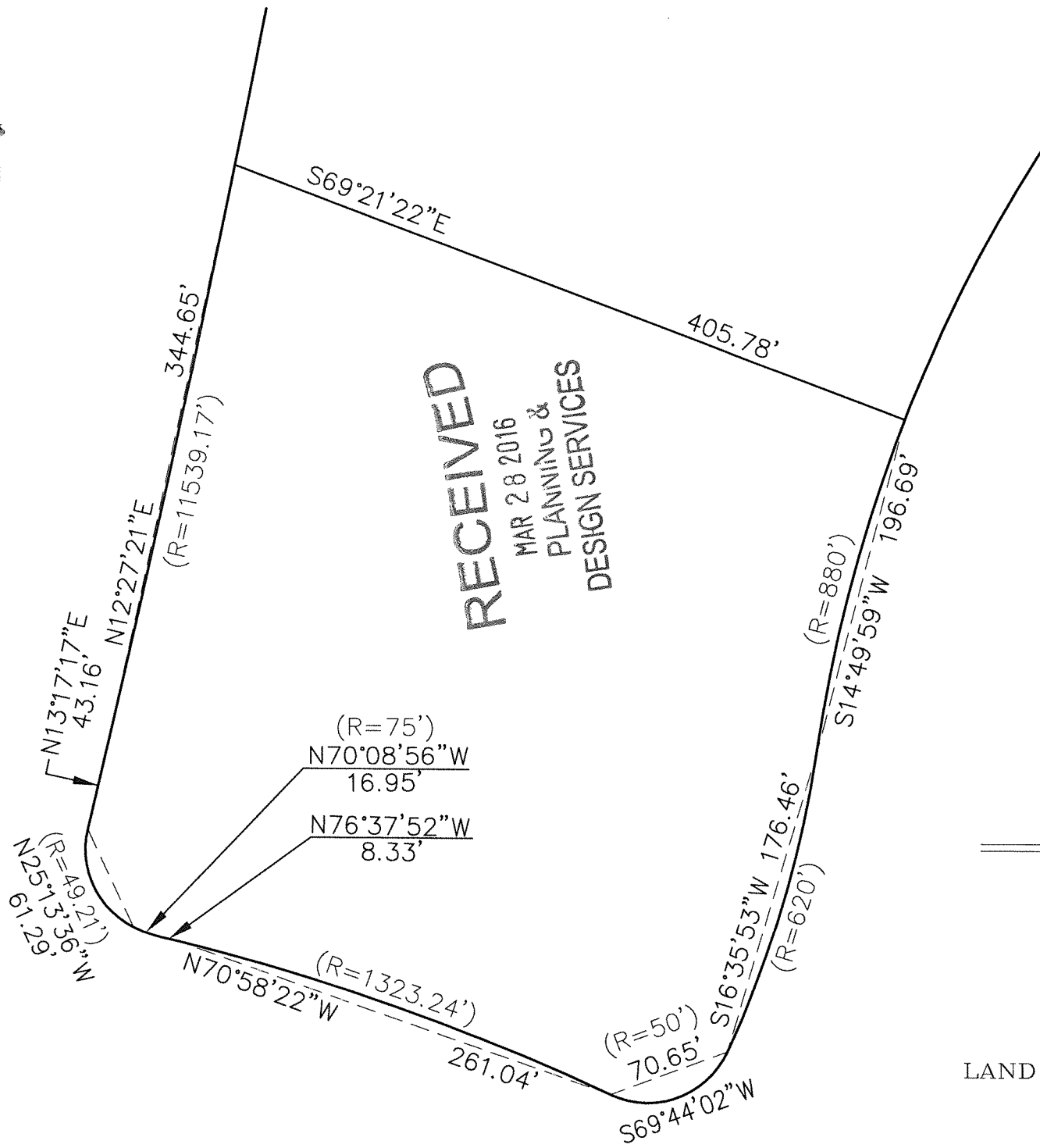
**Beginning** at a point on the easterly right-of-way line of U.S. Highway 42 (Brownsboro Road) and also being the southwesterly property corner of Tract 2 as shown on the Minor Plat recorded by D.B. 9145, Page 840 in the Jefferson County, Kentucky Clerk's Office thence leaving said right-of-way with Tract 2's south property line **S 69° 21' 22" E 405.78 feet** to a point in the west right-of-way line of Overlook Drive and the southeasterly property corner of Tract 2; thence with said right-of-way with a curve to the left with a **radius of 880 feet** and a chord with a bearing and distance of **S 14° 49' 59" W 196.69 feet** to a point on said right-of-way; thence with said right-of-way with a curve to the right and a **radius of 620 feet** and a chord with a bearing and distance of **S 16° 35' 53" W 176.46 feet** to a point; thence with said right-of-way with a curve to the right and a **radius of 50 feet** and a chord with a bearing and distance of **S 69° 44' 02" W 70.65 feet** to a point on the north right-of-way line of Seminary Drive; thence with said right-of-way with a curve to the left and a **radius of 1323.24 feet** and chord with a bearing and distance of **N 70° 58' 22" W 261.04 feet** to a point on said right-of-way; thence with said right-of-way **N 76° 37' 52" W 8.33 feet** to a point on said right-of-way; thence with a curve to the right with a **radius of 75 feet** and a chord with a bearing and distance of **N 70° 08' 56" W 16.95 feet** to a point on said right-of-way; thence with said right-of-way with a curve to the right with a **radius of 49.21 feet** and a chord with a bearing and distance of **N 25° 13' 36" W 61.29 feet** to a point on the easterly right-of-way of U.S. Highway 42 (Brownsboro Road) thence with said right-of-way **N 13° 17' 17" E 43.16 feet** to a point; thence with said right-of-way with a curve to the left and a **radius of 11539.17 feet** and a chord with a bearing and distance of **N 12° 27' 21" E 344.65 feet** to the **Beginning**, containing 3.77 acres more or less and being the same property as Tract 1 as shown on the Minor Plat recorded by D.B. 9145, Page 840 of record in the aforementioned County Clerk's Office and being the same property deeded to Fred M. Ferriell by D.B. 10486, Page 867 of record in the aforementioned County Clerk's Office.

15159 Rezoning Written Desc.doc aer/DW

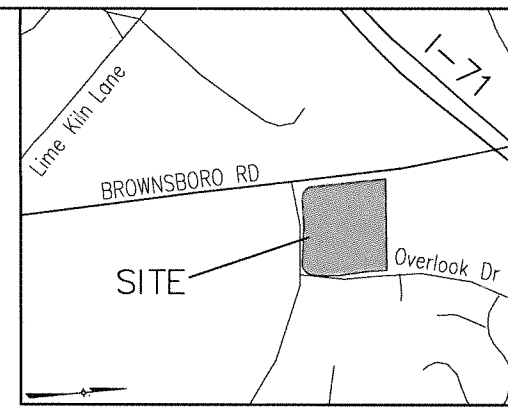
**RECEIVED**  
MAR 28 2016  
PLANNING &  
DESIGN SERVICES

*Legal & survey  
Madelin  
4/13/16  
JBW*

16 ZONE 1012



**RECEIVED**  
 MAR 28 2016  
 PLANNING &  
 DESIGN SERVICES



LOCATION MAP  
NOT TO SCALE

16 ZONE 1012

# ZONING EXHIBIT

FROM R-6 TO OR-3

SITE ADDRESS:  
 5900 U.S. HWY 42  
 LOUISVILLE, KY 40241

PREPARED BY:  
 LAND DESIGN & DEVELOPMENT, INC.  
 503 WASHBURN AVENUE, SUITE 101  
 LOUISVILLE, KENTUCKY 40222  
 PHONE: (502) 426-9374  
 FAX: (502) 426-9375  
 JOB: 15099