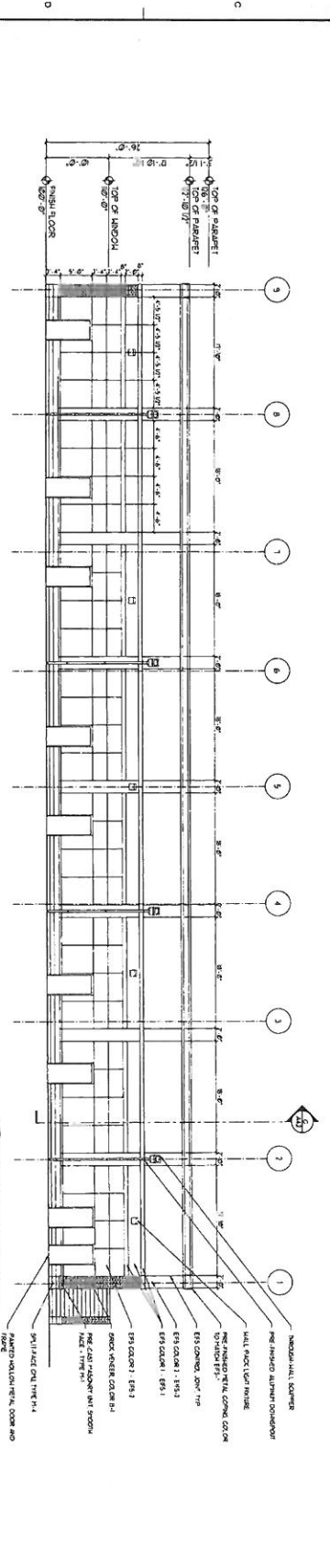
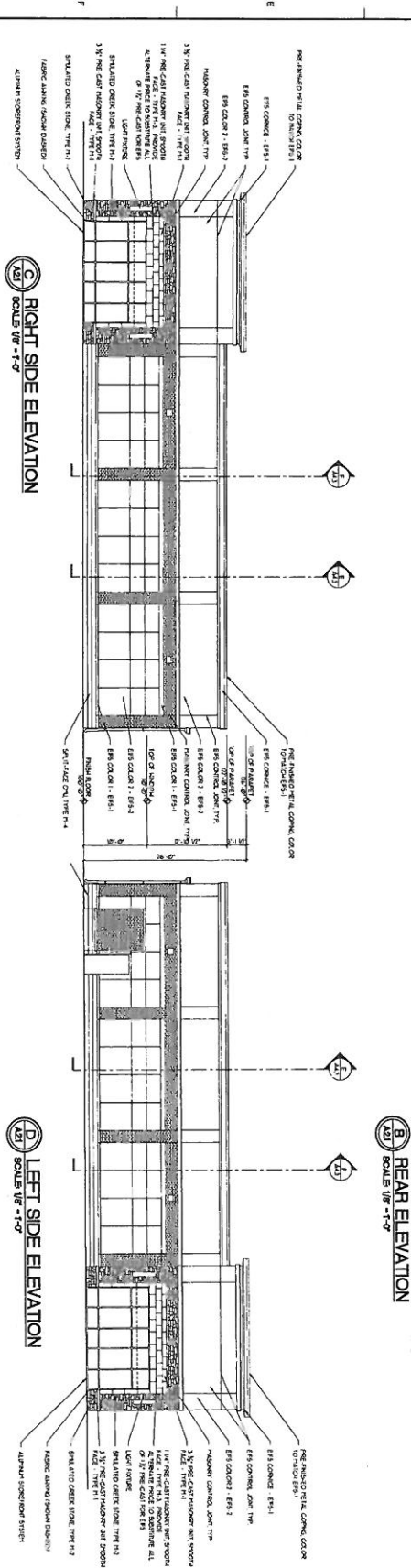


**FRONT ELEVATION**  
SCALE: 1/8" = 1'-0"



**REAR ELEVATION**  
SCALE: 1/8" = 1'-0"



**RIGHT SIDE ELEVATION**  
SCALE: 1/8" = 1'-0"

**LEFT SIDE ELEVATION**  
SCALE: 1/8" = 1'-0"

**RECEIVED**

JUL 21 2014  
PLANNING &  
DESIGN SERVICES



**STUDIO A**  
Architecture  
1111 EAST ARDEN AVENUE  
SUITE 100  
DENVER, CO 80218

PROJECT NAME  
**MIDDLE TOWN  
STATION  
BUILDING B**

OWNER  
**HAGGAN  
DEVELOPMENT**

DESIGNER  
**LOHMEYER INC**

DATE  
**DECEMBER 16, 2013**

SCALE  
**A2.1**

NOT FOR CONSTRUCTION

EXTERIOR ELEVATIONS

13343420  
DECEMBER 16, 2013  
A2.1

13343420  
DECEMBER 16, 2013  
A2.1

13343420  
DECEMBER 16, 2013  
A2.1

13343420  
DECEMBER 16, 2013  
A2.1

13343420  
DECEMBER 16, 2013  
A2.1

13343420  
DECEMBER 16, 2013  
A2.1

13343420  
DECEMBER 16, 2013  
A2.1

13343420  
DECEMBER 16, 2013  
A2.1

# Southern Facing Elevation



RECEIVED

JUL 21 2014

PLANNING &  
DESIGN SERVICES

HOEVRAN103



# Northern Facing Elevation



RECEIVED

JUL 21 2014

PLANNING &  
DESIGN SERVICES



RECEIVED

JUL 21 2014

PLANNING &  
DESIGN SERVICES

# Eastern Facing Elevation



14DEN2441103



RECEIVED  
Western Facing Elevation

JUL 21 2014  
PLANNING &  
DESIGN SERVICES

