

2 LEFT ELEVATION
A-200
1/8" = 1'-0"

ALERT
REFER TO ARCHITECTURAL FINISHES AND FINISH SPECIFICATIONS FOR COLOR CODES:
1- COLOR 1
2- COLOR 2
3- COLOR 3
4- COLOR 4
5- COLOR 5

4	1	4	1	4	1
1	2	3	1	1	2
2	3	3	2	2	3
3	4	3	3	3	4
4	1	4	1	4	1
1	2	3	1	1	2
2	3	3	2	2	3
3	4	3	3	3	4

KEYNOTES - ELEVATIONS	
Tag	Description
1	ABOVE GRADE EXPOSED FOUNDATION WALL
2	CONCRETE FOOTING AND FOUNDATION WALL AS REQUIRED PER LOCAL FROST DEPTHS
3	ALUMINIUM FIXED WINDOW W/THERMAL BROKEN FRAME, INSULATED GLAZING WITH INTEGRAL ALUMINIUM LOUVER AT PTAC UNITS
4	ALUMINIUM FIXED WINDOW W/THERMAL BROKEN FRAME, INSULATED GLAZING
5	ALUMINIUM STOREFRONT SYSTEM W/THERMAL BROKEN FRAME, INSULATED GLAZING
6	ALUMINIUM PTAC LOUVER- COLOR TO MATCH ADJACENT MATERIAL
7	ALUMINIUM SLIDING ENTRY DOOR W/THERMAL BROKEN FRAME AND INSULATED GLAZING
8	OVERFLOW SCUPPER
9	SIGNAGE-REFER TO TRU BY HILTON EXTERIOR SIGNAGE SPECIFICATIONS
10	KYNAR ALUMINIUM COPING/ GRAVEL STOP SYSTEM- COLOR TO MATCH ADJACENT MATERIAL
11	EXPANSION JOINT @ FLOOR LINE W/BAKER ROD AND SEALANT
12	ACCENT "V" JOINT

GENERAL ELEVATION NOTES

- REVIEW ALL SIGHTLINES AROUND PROPERTY BEFORE LOCATING ROOF TOP EQUIPMENT. VERIFY ALL EQUIPMENT IS ADEQUATELY SCREENED.
- SC TO PROVIDE A MOCK WALL SHOWING A FULL WINDOW INSTALL WITH FLASHING. GC CAN USE A WINDOW SCHEDULE TO DETERMINE WINDOW TYPE OF FULL SIZE WINDOW.
- ALL EXTERIOR VENTS, GRILES, MECHANICAL LOUVERS AND EXTERIOR HOLLOW METAL DOORS TO BE FINISHED TO MATCH ADJACENT EXTERIOR MATERIAL. ALL BUILDING PERMITS TO BE COORDINATE WITH THE APPROVED SITE PLAN. THE PLANNING DEPARTMENT DOES NOT REVIEW BUILDING PERMIT PLAN SETS. SO IT IS THE DEVELOPER'S RESPONSIBILITY TO ENSURE THAT ELEVATIONS SUBMITTED IN THE BUILDING PERMIT SET MATCH THOSE APPROVED UNDER THE SITE PLAN REVIEW PROCESS. IF THE ELEVATIONS DO NOT MATCH THOSE IN THE SITE PLAN, IT WILL DELAY THE ISSUANCE OF A CERTIFICATE OF OCCUPANCY AT THE END OF CONSTRUCTION AND MAY NECESSITATE MODIFICATIONS TO THE CONTRACTED BUILDING.
- ALL VENT PIPES, ETC. EXTENDING ABOVE THE ROOF SURFACE MUST BE PAINTED A COLOR THAT BLENDS WITH THE ROOF COLOR.

PROJECT NOTES

- REFER TO TRU BY HILTON STANDARDS MANUAL AND STYLE GUIDE FOR ADDITIONAL INFORMATION REGARDING EXTERIOR MATERIALS, CONSTRUCTION REQUIREMENTS AND SIGNAGE REQUIREMENTS. BUILDING HEIGHT DIMENSIONS ARE BASED ON HILTON CONSTRUCTION. THESE DIMENSIONS WILL VARY BASED ON FINAL BUILDING CONSTRUCTION. INTERIOR CEILING HEIGHTS ARE CRITICAL TO MAINTAIN AS MINIMUM. ALL EPI'S CLADDING SYSTEM (EPI)-BASED OF DESIGN - OUTSULATION PLUS PM EPI'S BY DRYVIT SYSTEMS.
- PROVIDE EPI'S HIGH IMPACT MESH ASSEMBLY FOR LOWER 6" OF WALL AREAS AT GRADE. BASIS OF DESIGN - DRYVIT STANDARD MESH OVER PANEE 20G HIGH IMPACT MESH.
- COORDINATE FOR MINIMUM EXTERIOR CONTINUOUS INSULATION THICKNESS IN ACCORDANCE WITH ADOPTED ENERGY CODE REQUIREMENTS FOR ALL CLADDING AREAS.

LEGEND - EXTERIOR FINISHES

CODE	MATERIAL
EX 01	DRYVIT SYSTEMS: SANDBLAST DPR - TRU# 02 10305 - W/ "STRATONE" HIGH PERFORMANCE COLORANT (PANTONE 7C BLACK) - DARK FINISH
EX 02	DRYVIT SYSTEMS: SANDBLAST DPR - HX CROPHOBIC TRU# 03 1107 - DRYVIT #610B OVERCAST - MEDIUM FINISH
EX 03	DRYVIT SYSTEMS: TERRAZZO POLISHED GRANITE TRU# 03 1101 - DRYVIT #610B SLICES - LIGHT FINISH
EX 04	DRYVIT SYSTEMS: FINISH VARIES
EX 05	DRYVIT SYSTEMS: SANDBLAST DPR - TRU# 02 10305 - W/ "STRATONE" HIGH PERFORMANCE COLORANT (PANTONE PMS PROCESS 0289)
EX 06	DRYVIT SYSTEMS: DRYVIT SYSTEM: SANDBLAST DPR DR VWR #610B ZALIT BALE
EX 07	OUTDOOR HIGH PRESSURE LAMINATE PANEL: CYAN (DARK FINISH) TRESPA OR APPROVED EQUAL
EX 08	OUTDOOR HIGH PRESSURE LAMINATE PANEL: COLOR YELLOW (LIGHT FINISH) TRESPA OR APPROVED EQUAL
EX 09	BENJAMIN MOORE EXTERIOR PAINT: 1596 NIGHTFALL HIGH GLOSS FINISH

GENERAL SIGNAGE NOTES

- ALL SIGNAGE SHOWN FOR ILLUSTRATIVE PURPOSES ONLY. LOCATION, SIZE, ETC. TO BE DETERMINED ON AN INDIVIDUAL PROJECT BASIS. MINIMUM 3/4" PLYWOOD BACKSUPPORT REQUIRED AT SIGN LOCATIONS- AREA SHOULD COVER ENTIRE LENGTH AND HEIGHT OF SIGN OR SPACE AVAILABLE FOR SIGN.
- ELECTRICAL AND FINAL CONNECTION BY CONTRACTOR. ELECTRICAL REQUIREMENTS MAY BE OBTAINED FROM SIGN COMPANY. TYPICAL 100V REQUIREMENT.
- RECESSED SIGNAGE ARE NOT ALLOWED. PERMANENT ACCESS DOORS TO INTERIOR OF ALL PARAMETERS WHERE SIGNS ARE LOCATED TO BE PROVIDED BY CONTRACTOR. CONTRACTOR TO FURNISH AND CONNECT PRIMARY ELECTRICAL SERVICE INSIDE PARAPET WALL. GUEST ROOMS OR PUBLIC SPACES WITH SIGNAGE ON EXTERIOR WALLS MUST HAVE ELECTRICAL PENETRATIONS AND/OR INSTALLED PRIOR TO CLOSING UP THE WALL. PENETRATION LAYOUT MAY BE OBTAINED FROM SIGN COMPANY.



1 FRONT ELEVATION
A-200
1/8" = 1'-0"

BASE4
8958 GLADES ROAD, #237
BOCA RATON, FLORIDA 33434
1.720.728.BASE4 | www.base4.com
AA26003324
CA 29917
RICK MAUNE, AIA
1025 NW 31st AVE
POMPANO BEACH FL 33069

PHIL MORRIS
PHONE: 954-545-0626
Management Company

COMMONWEALTH HOTELS INC.
100 E. RIVERCENTER BLVD., SUITE 1050
COVINGTON, KY 41011
PHONE: (606) 963-2266

HILTON TRU
LOUISVILLE, KY

ID	ISSUED	DESCRIPTION

CURRENT ISSUE

ISSUED FOR 60% PROGRESS SET

CURRENT ISSUE DATE: 2017.04.07

DRAWN BY: SJ

CHECKED BY: NM

PROJECT NO: B4-132-1701

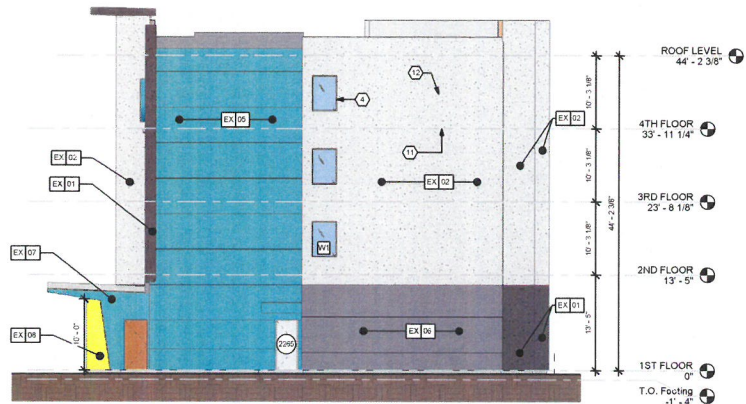
SHEET NAME

EXTERIOR ELEVATIONS-1

DRAWINGS NO.

A-200

17 DEVPLAN 1060



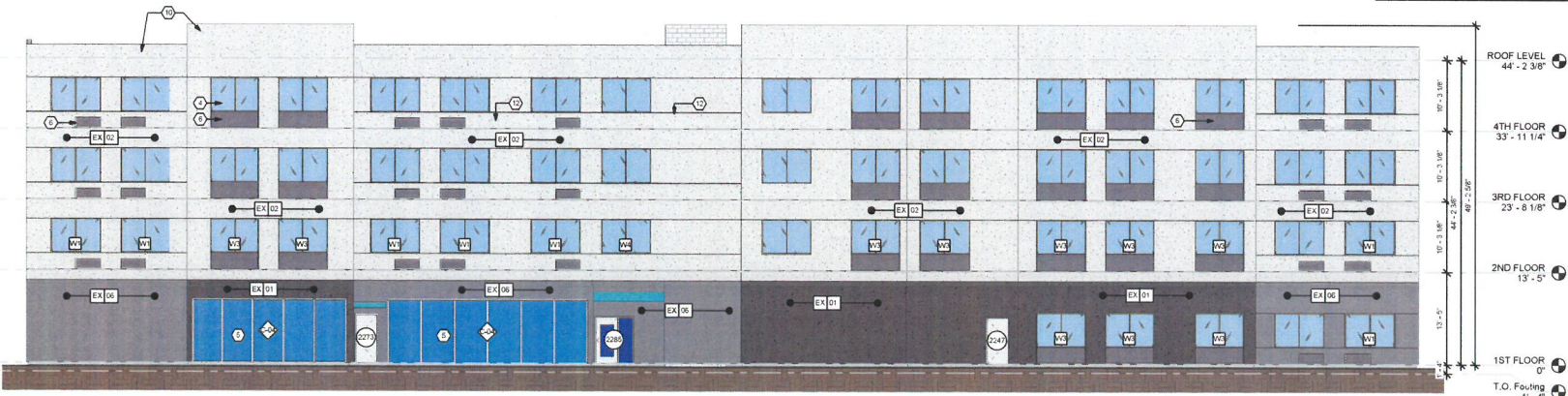
1 RIGHT ELEVATION
1/8" = 1'-0"

LEGEND - EXTERIOR FINISHES	
CODE	MATERIAL
EX 01	DRYVIT SYSTEMS SANDBLAST DPR "TRUH 02 1030" -W "STRATO ONE" HIGH PERFORMANCE COLORANT (PAINT ONE TC BLACK) - DARK FINISH
EX 02	DRYVIT SYSTEMS SANDBLAST DPR-HYDROPHOBIC "TRUH 03 1101" - DRYVIT #6138 OVERCAST-MEDIUM FINISH
EX 03	DRYVIT SYSTEMS TERRAZZO POLISHED GRANITE "TRUH 03 1101" - DRYVIT #007 GLAZER-LIGHT FINISH
EX 04	DRYVIT SYSTEMS FINISH VARIES
EX 05	DRYVIT SYSTEMS SANDBLAST DPR "TRUH 02 1030" -W "STRATO ONE" HIGH PERFORMANCE COLORANT (PAINT ONE PMS PROCESS 026)
EX 06	DRYVIT SYSTEMS DRYVIT SYSTEM SANDBLAST DPR DRYVIT #018 TABLET
EX 07	OUTDOOR HIGH PRESSURE LAMINATE PANEL, CYAN (DARK FINISH) TRESPA OR APPROVED EQUAL
EX 08	OUTDOOR HIGH PRESSURE LAMINATE PANEL, COLOR YELLOW/LIGHT FINISH TRESPA OR APPROVED EQUAL
EX 09	BENJAMIN MOORE EXTERIOR PAINT "1556 NIGHT FALL" HIGH GLOSS FINISH

KEYNOTES - ELEVATIONS	
Tag	Description
1	ABOVE GRADE EXPOSED FOUNDATION WALL
2	CONCRETE FOOTING AND FOUNDATION WALL AS REQUIRED PER LOCAL FROST DEPTHS
3	ALUMINIUM FIXED WINDOW W/THERMAL BROKEN FRAME, INSULATED GLAZING WITH INTEGRAL ALUMINIUM LOUVER AT PTAC UNITS
4	ALUMINIUM FIXED WINDOW W/THERMAL BROKEN FRAME, INSULATED GLAZING
5	ALUMINIUM STOREFRONT SYSTEM W/THERMAL BROKEN FRAME, INSULATED GLAZING
6	ALUMINIUM PTAC LOUVER- COLOR TO MATCH ADJACENT MATERIAL
7	ALUMINIUM SLIDING ENTRY DOOR W/THERMAL BROKEN FRAME AND INSULATED GLAZING
8	OVERFLOW SCUPPER
9	SIGNAGE-REFER TO TRU BY HILTON EXTERIOR SIGNAGE SPECIFICATIONS
10	KYNAR ALUMINIUM COPING/ GRAVEL STOP SYSTEM- COLOR TO MATCH ADJACENT MATERIAL
11	EXPANSION JOINT @ FLOOR LINE W/BAKER ROD AND SEALANT
12	ACCENT "V" JOINT

GENERAL ELEVATION NOTES	
1.	REVIEW ALL SIGHTLINES AROUND PROPERTY BEFORE LOCKING ROOF TOP EQUIPMENT. VERIFY ALL EQUIPMENT IS ADEQUATELY SCREENED.
2.	BEFORE LOCKING ROOF TOP EQUIPMENT, VERIFY WINDOW/WALL WITH FLASHING GC CAN USE A PROPRIETARILY SCALED DOWN WINDOW IN LUE OF FULL SIZE WINDOW.
3.	ALL EXTERIOR VENTS, GRILLES, MECHANICAL LOUVERS AND EXTERIOR HOLLOW METAL DOORS TO BE FINISHED TO MATCH ADJACENT EXTERIOR MATERIAL. ALL BUILDING PERMITS TO BE CONSISTENT WITH THE APPROVED SITE PLAN. THE PLANNING DEPARTMENT DOES NOT REVIEW BUILDING PERMIT PLAN SETS. SO IT IS THE DEVELOPER'S RESPONSIBILITY TO ENSURE THAT ELEVATIONS SUBMITTED IN THE BUILDING PERMIT SET MATCH THOSE APPROVED DURING THE SITE PLAN REVIEW PROCESS. IF THE ELEVATIONS DO NOT MATCH THOSE IN THE SITE PLAN, IT WILL DELAY THE ISSUANCE OF A CERTIFICATE OF OCCUPANCY AT THE END OF CONSTRUCTION AND MAY NECESSITATE MODIFICATIONS TO THE CONSTRUCTED BUILDING.
4.	ALL VENT PIPES, ETC. EXTENDING ABOVE THE ROOF SURFACE MUST BE PAINTED A COLOR THAT BLENDS WITH THE ROOF COLOR.
PROJECT NOTES	
1.	REFER TO TRU BY HILTON STANDARDS MANUAL AND SITE GUIDE FOR ADDITIONAL INFORMATION REGARDING EXTERIOR MATERIALS, CONSTRUCTION REQUIREMENTS AND DRAINAGE REQUIREMENTS. BUILDING HEIGHT DIMENSIONS ARE BASED ON WOOD FRAME CONSTRUCTION - THESE DIMENSIONS WILL VARY BASED ON FINAL BUILDING CONSTRUCTION. INTERIOR CEILING HEIGHTS ARE CRITICAL TO MAINTAIN AS MINIMUM.
2.	EIFS CLADDING SYSTEM (EX) - BASIS OF DESIGN - COORDINATE FOR MINIMUM EXTERIOR CONTINUOUS INSULATION THICKNESS / R VALUE REQUIREMENTS IN ACCORDANCE WITH ADOPTED ENERGY CODE REQUIREMENTS FOR ALL CLADDING AREAS.
3.	PROVIDE EIFS HIGH IMPACT MESH ASSEMBLY FOR LOWER 4'-0" OF WALL AREAS AT GRADE. BASIS OF DESIGN - DRYVIT "STANDARD" MESH OVER "PANCE 200" HIGH IMPACT MESH.
4.	COORDINATE FOR MINIMUM EXTERIOR CONTINUOUS INSULATION THICKNESS / R VALUE REQUIREMENTS IN ACCORDANCE WITH ADOPTED ENERGY CODE REQUIREMENTS FOR ALL CLADDING AREAS.
5.	COORDINATE FOR MINIMUM EXTERIOR CONTINUOUS INSULATION THICKNESS / R VALUE REQUIREMENTS IN ACCORDANCE WITH ADOPTED ENERGY CODE REQUIREMENTS FOR ALL CLADDING AREAS.

GENERAL SIGNAGE NOTES	
1.	ALL SIGNAGE SHOWN FOR ILLUSTRATIVE PURPOSES ONLY. LOCATION, SIZE, ETC. TO BE DETERMINED ON AN INDIVIDUAL PROJECT BASIS.
2.	MINIMUM 3/4" PLYWOOD BACKBOARD REQUIRED AT SIGN LOCATIONS - AREA SHOULD COVER ENTIRE LENGTH AND HEIGHT OF FASCIA OR SPACE AVAILABLE FOR SIGN.
3.	ELECTRICAL AND FINAL CONNECTION BY CONTRACTOR - ELECTRICAL REQUIREMENTS MAY BE OBTAINED FROM SIGN COMPANY - TYPICAL 150V REQUIREMENT.
4.	RACEWAY/ WIREWAYS ARE NOT ALLOWED. PERMANENT ACCESS DOORS TO INTERIOR OF ALL PARAPETS WHERE SIGNS ARE LOCATED TO BE PROVIDED BY CONTRACTOR - CONTRACTOR TO FURNISH AND CONNECT PRIMARY ELECTRICAL TO SERVICE INSIDE PARAPET WALL.
5.	QUESTIONS OR PUBLIC SPACES WITH SIGNS ON EXTERIOR WALLS MUST HAVE ELECTRICAL PENETRATIONS AND/OR INSTALLED PRIOR TO CLOSING UP THE WALL. PENETRATION LAYOUT MAY BE OBTAINED FROM SIGN COMPANY.



2 REAR ELEVATION
1/8" = 1'-0"



BASE4
8858 GLADES ROAD, #237
BOCA RATON, FLORIDA 33454
1.720.728.BASE4 www.base4.com
CA 29911
RICK MUNIZ AIA
1025 NW 31st AVE
POMPANO BEACH, FL 33069

PHIL MORRIS
PHONE: 937-545-0626
COMMONWEALTH
COMMONWEALTH HOTELS INC.
100 E. RIVERCHURCH BLVD., SUITE 1050
COVINGTON, KY 41011
PHONE: 606-932-2269

tru BY HILTON
HILTON TRU
LOUISVILLE, KY

ID	ISSUED	DESCRIPTION

CURRENT ISSUE
ISSUED FOR 60% PROGRESS SET
CURRENT ISSUE DATE: 2017.04.07
DRAWN BY: SJ
CHECKED BY: NM
PROJECT NO.: B4-132-1701
SHEET NAME
EXTERIOR ELEVATIONS-2
DRAWINGS NO.

A-201

17 DEVLPLAN 1060