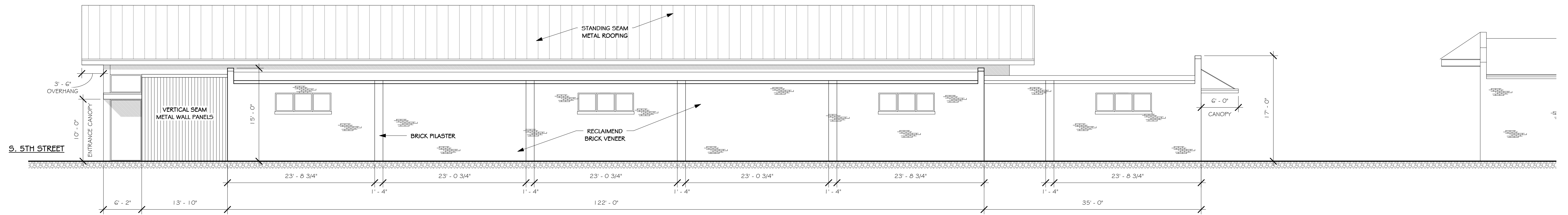
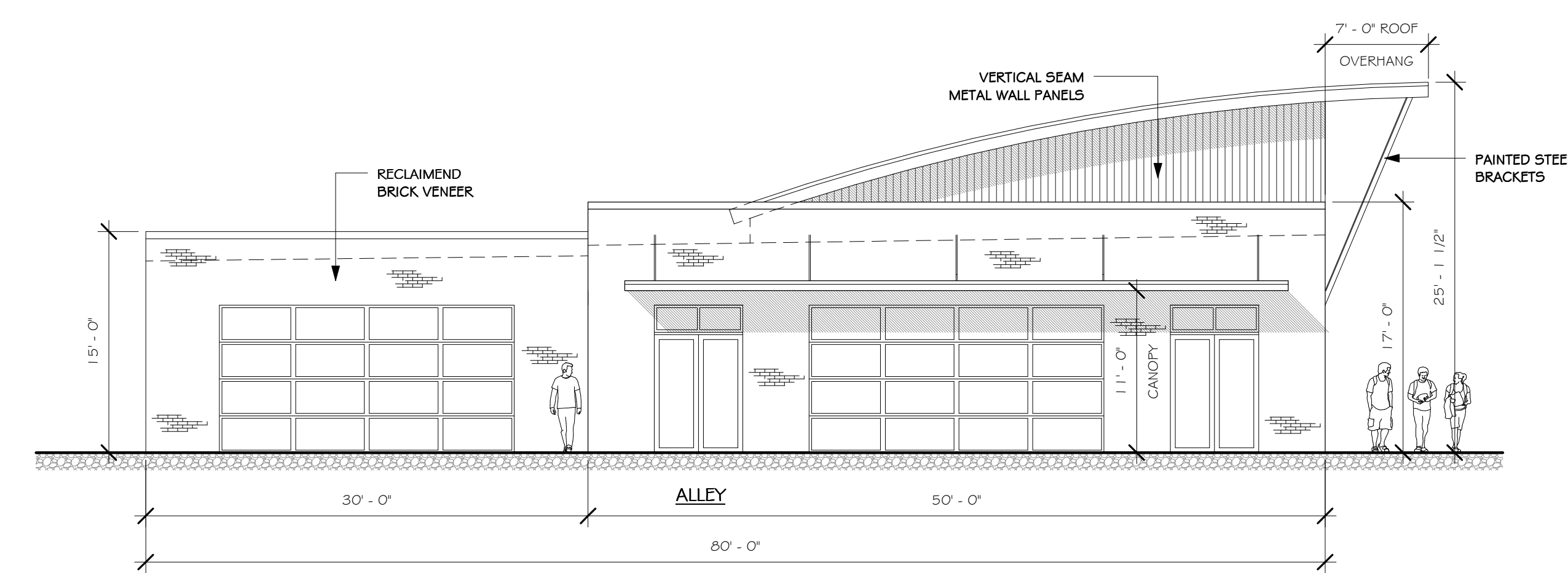


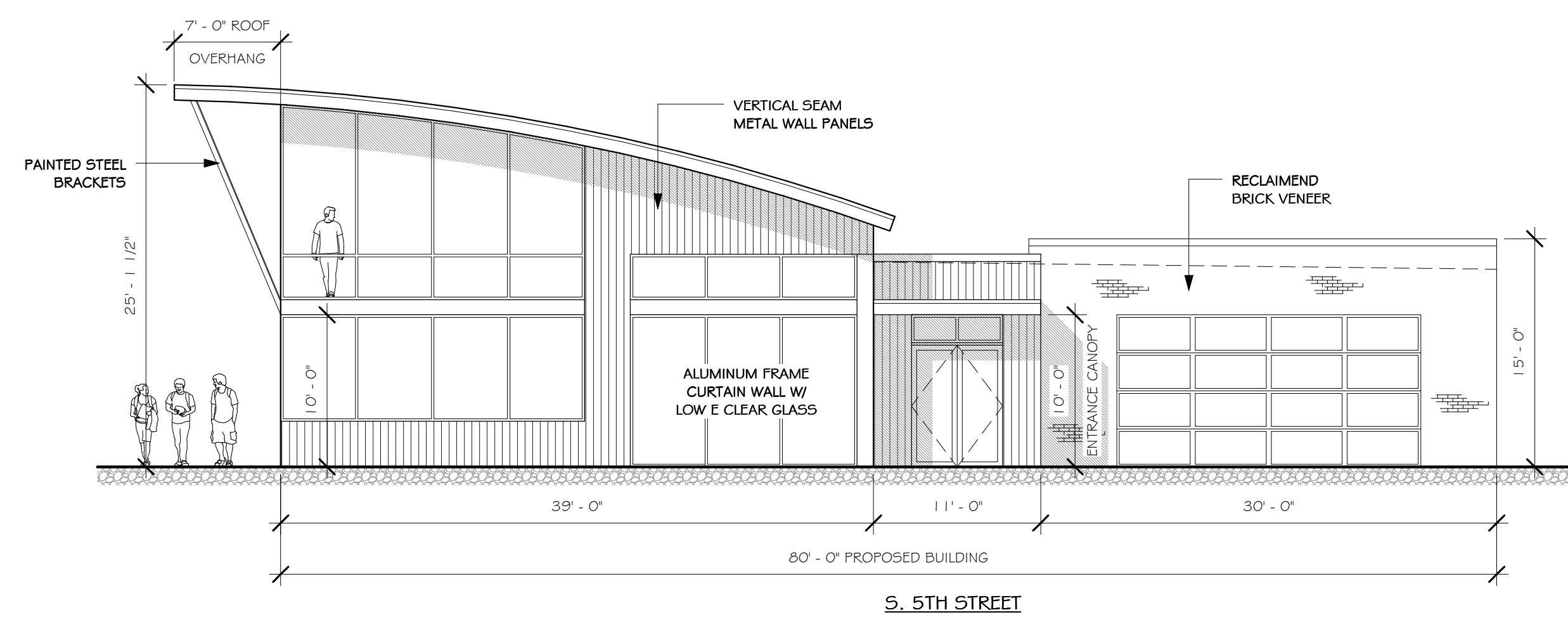
1 SOUTH ELEVATION
1/8" = 1'-0"



2 NORTH ELEVATION
1/8" = 1'-0"



3 WEST ELEVATION
1/8" = 1'-0"



4 EAST ELEVATION
1/8" = 1'-0"

STANLEY SCHULTZE & CO. INC.
848 SOUTH 6TH STREET
LOUISVILLE, KY. 40203

Douglas R. Schmitt Architect
P.O. Box 172, Harrods Creek, KY, 40027
phone: (502) 802-2648
email: doug@schmittandcompany.com

Review: 04/19/2021
Issue:
Revised: 06/17/2021

© COPYRIGHTED
Design and Construction Documents are not to be reproduced, copied, or used for any other project without the expressed permission of the Architect.

A1