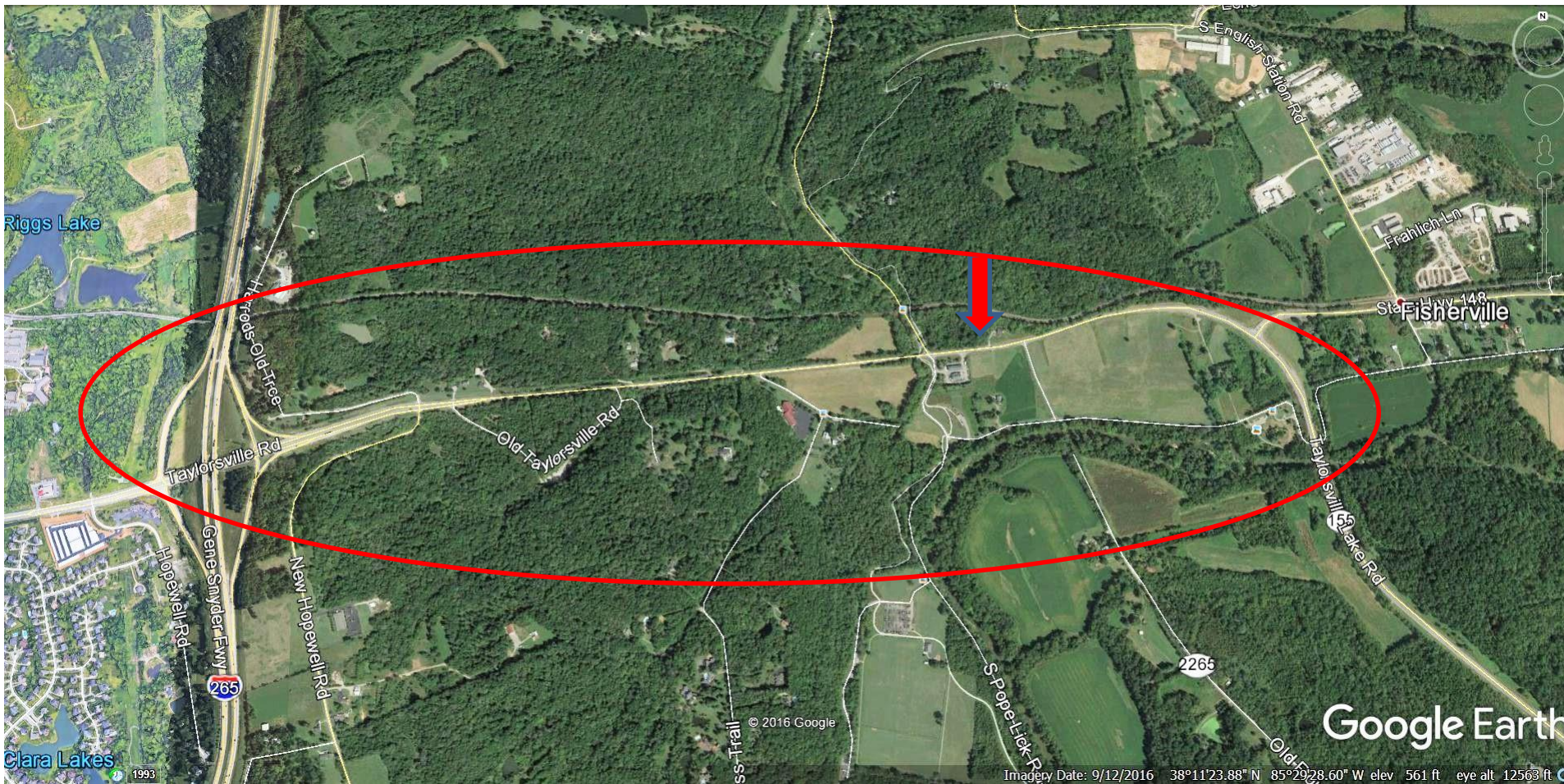


Highway 155 (Taylorsville Rd.) from I265 to Taylorsville Lake Rd

2.6miles analyzed



Analysis of Accidents on Hwy 155 from I265 to Taylorsville Lake Rd fm 1/1/06 to 10/27/16

- There have been 464 collisions involving 963 vehicles
- There have been 4 people killed and 169 people injured
- There have been 36 injuries for every 100 accidents
- 39% of the accidents occurred at or within ½ mile of the Pope Lick intersection
- 42% of the injures occurred at or within ½ mile of the Pope Lick intersection
- The number of accidents have doubled from 2006 to present
- The number of injuries have nearly tripled from 2006 to present
- Rate of accidents is 5/month in the period from 1/1/14 to present
- Rate of injures is 2/month in the period from 1/1/14 to present

- **Taylorsville Rd from the Gene Snyder to Taylorsville Lake Rd is unsafe now !**
- **New development without major road improvements will only make it more unsafe !**

● Deaths 1/1/06-10/27/16

1.7 mile stretch of Hwy 155 Injuries and Deaths 1/1/2006 to 11/14/16

● Injuries 1/1/06-12/31/09
● Injuries 1/1/10-12/31/13
● Injuries 1/1/14-10/27/16

