

CHRISTIAN WAY APARTMENTS - LOUISVILLE, KY

CONCEPTUAL SITE PLANNING

SEPTEMBER 16, 2022

PREPARED FOR:

NTS DEVELOPMENT COMPANY

NILES BOLTON ASSOCIATES

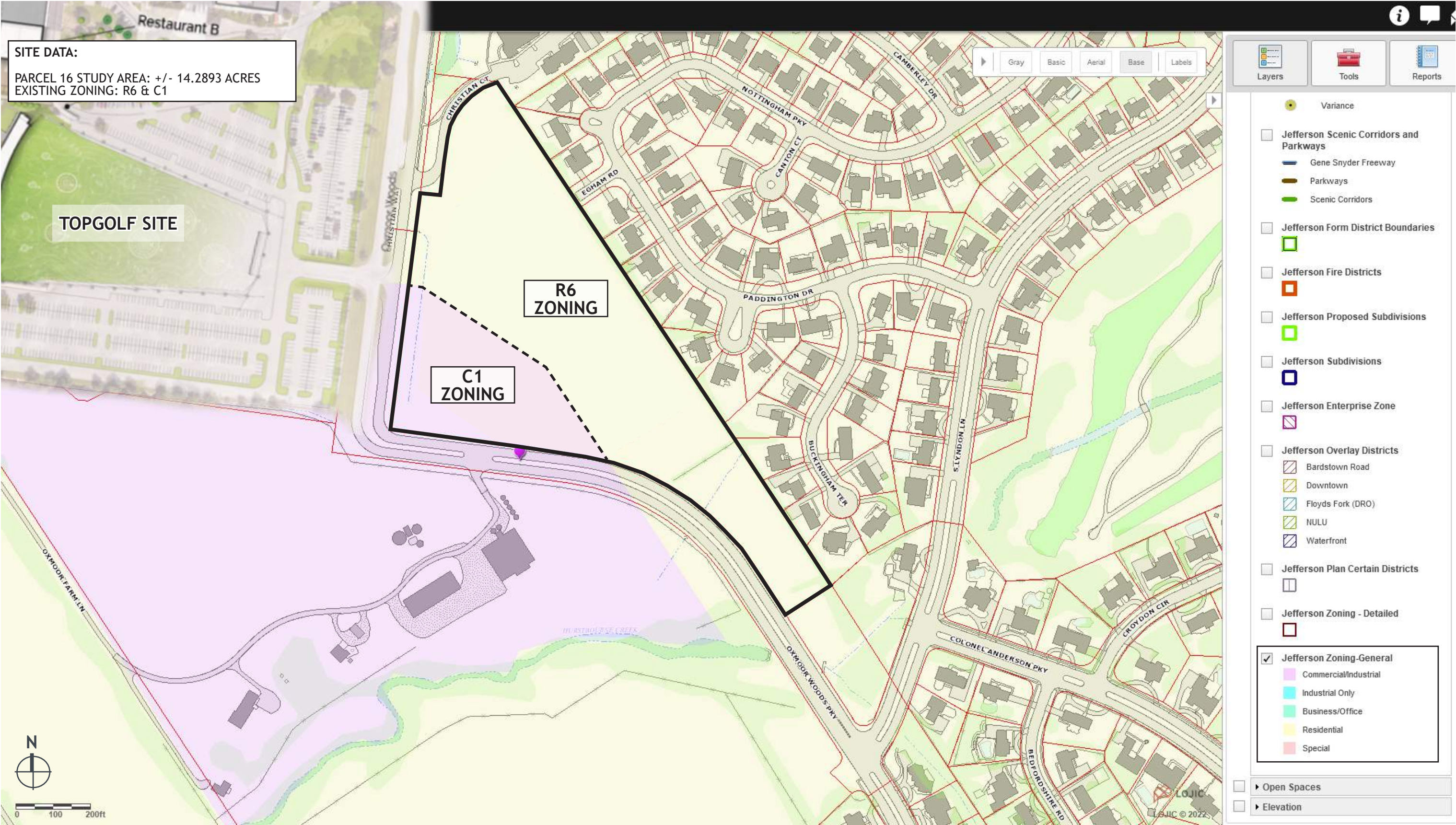
Site Location Map

Christian Way Apartments | Louisville, KY



Site Analysis - Existing Zoning Map

Christian Way Apartments | Louisville, KY



Site Analysis - Existing Floodplain Map

Christian Way Apartments | Louisville, KY



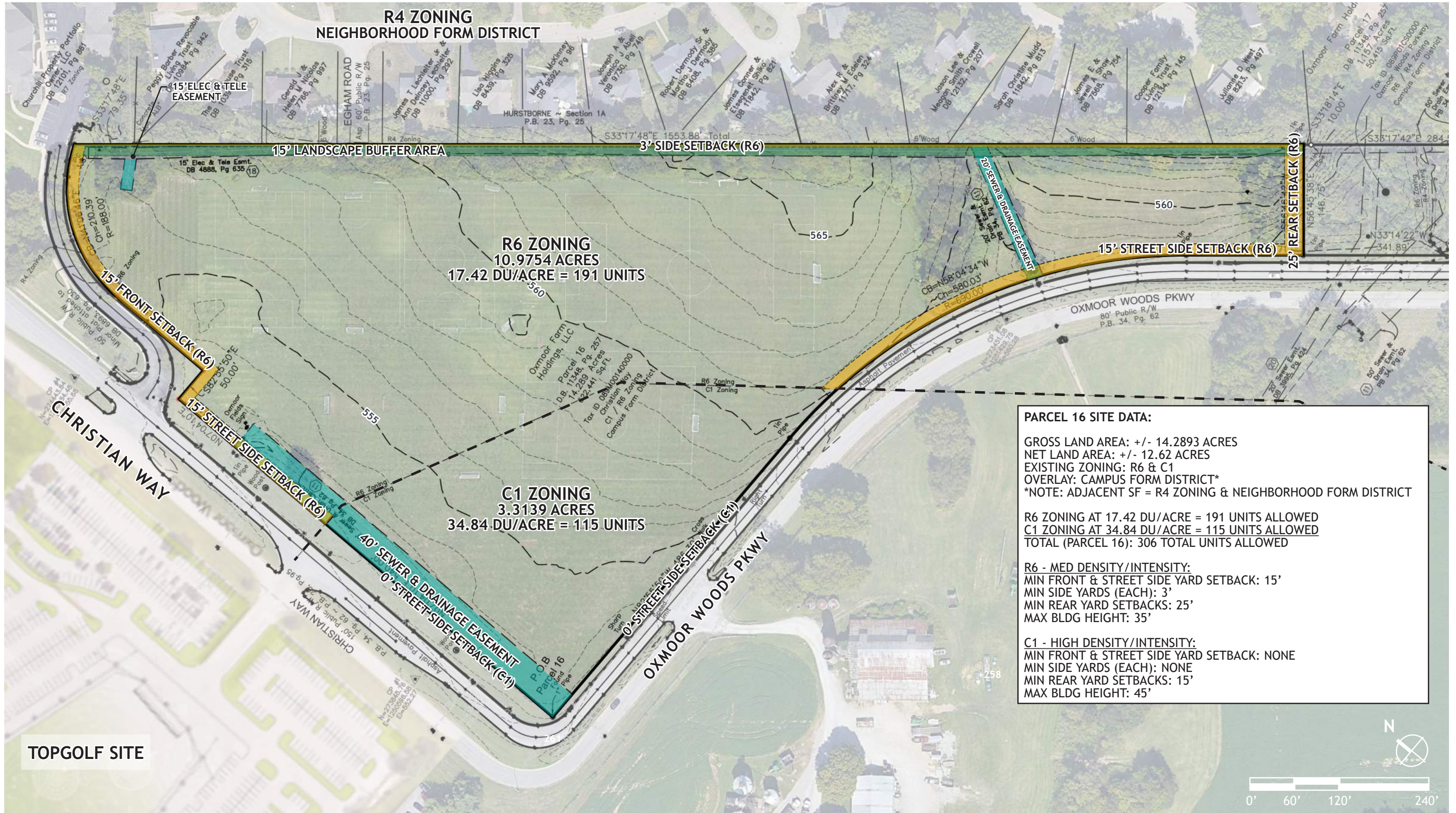
Site Analysis - Existing Topo Map

Christian Way Apartments | Louisville, KY



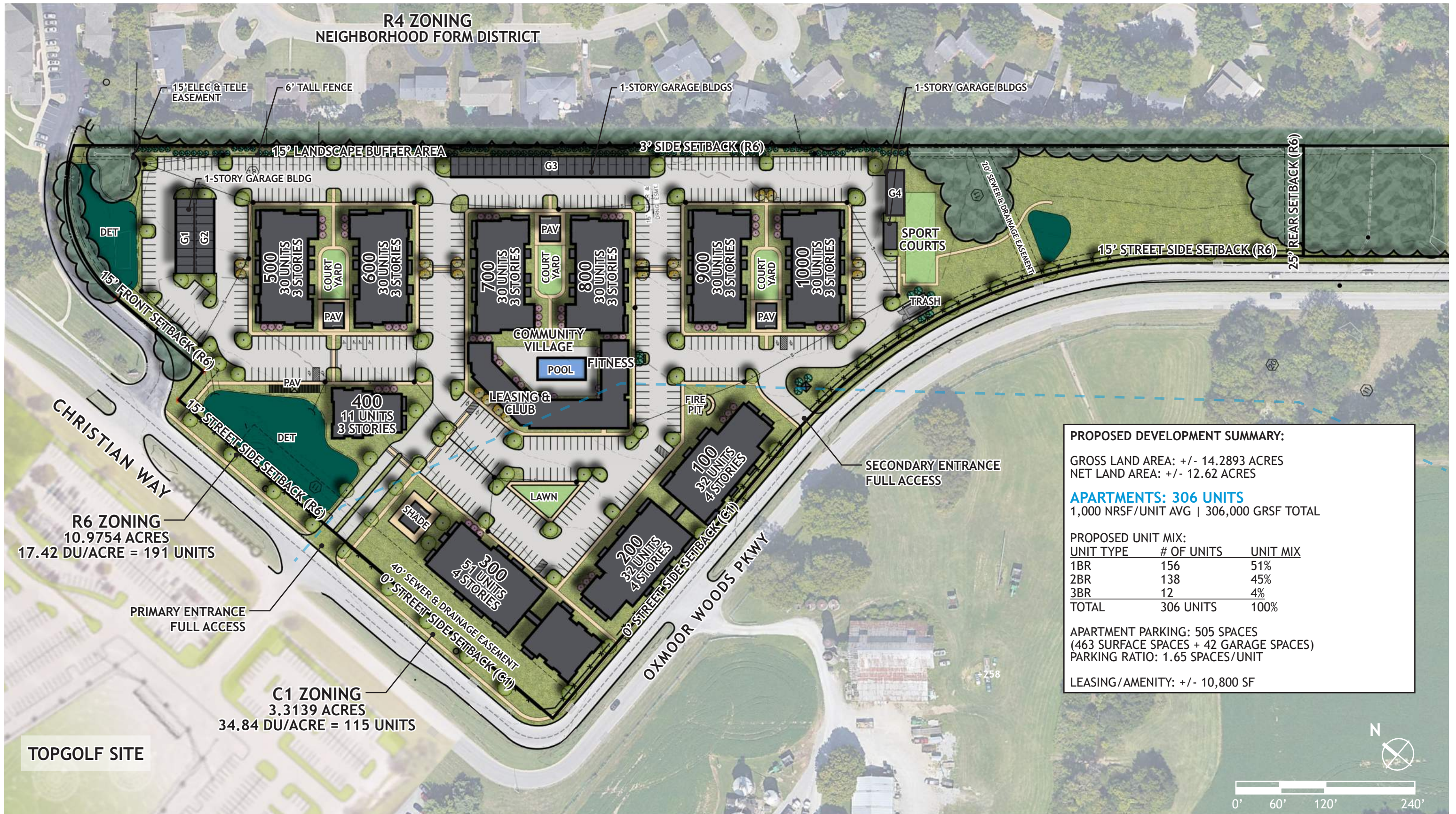
Existing Conditions - Parcel 16

Christian Way Apartments | Louisville, KY



Conceptual Site Plan

Christian Way Apartments | Louisville, KY



Model Aerial View - From Oxmoor Woods Pkwy

Christian Way Apartments | Louisville, KY



Model Aerial View - From Corner Of Christian Way & Oxmoor Woods Pkwy

Christian Way Apartments | Louisville, KY



Model Aerial View - From Christian Way

Christian Way Apartments | Louisville, KY



Model Aerial View - From Adjacent Neighborhood

Christian Way Apartments | Louisville, KY

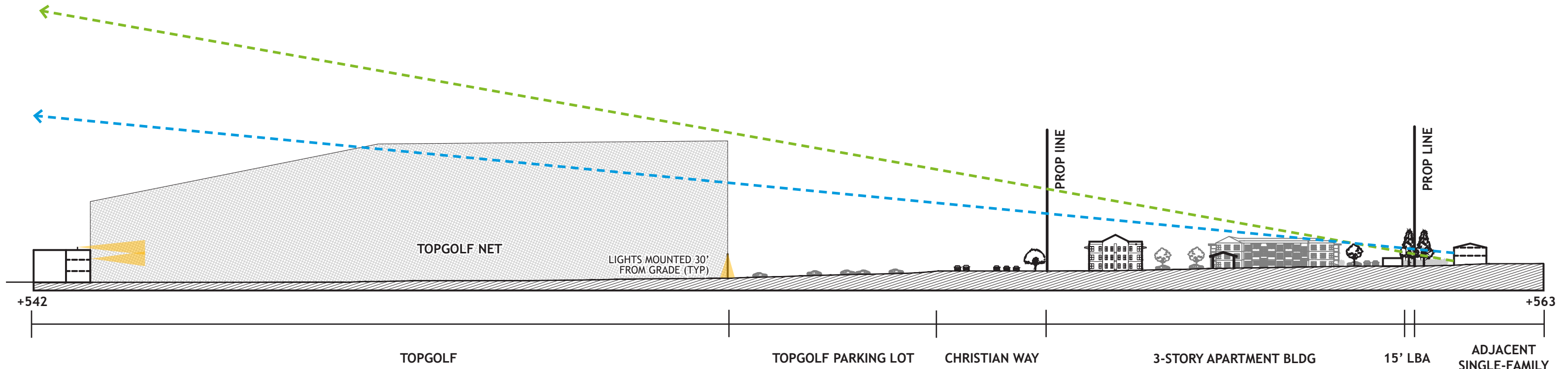


Section Cut of Proposed Site - TopGolf to Single-Family Neighborhood

Christian Way Apartments | Louisville, KY



SECTION KEY PLAN



NOTE: LIGHTING FIXTURES TO BE MOUNTED AT APPROXIMATELY 28' & 40', UNDER THE DECKING OF THE THIRD HITTING BAY FLOOR & THE ROOF OF THE BUILDING. WITHIN THE REGIONAL CENTER FORM DISTRICT, FIXTURES WITH A LUMEN OUTPUT GREATER THAN 1800 LUMENS PER LAMP MUST BE MOUNTED AT A HEIGHT LESS THAN 30' UNLESS OTHERWISE APPROVED.

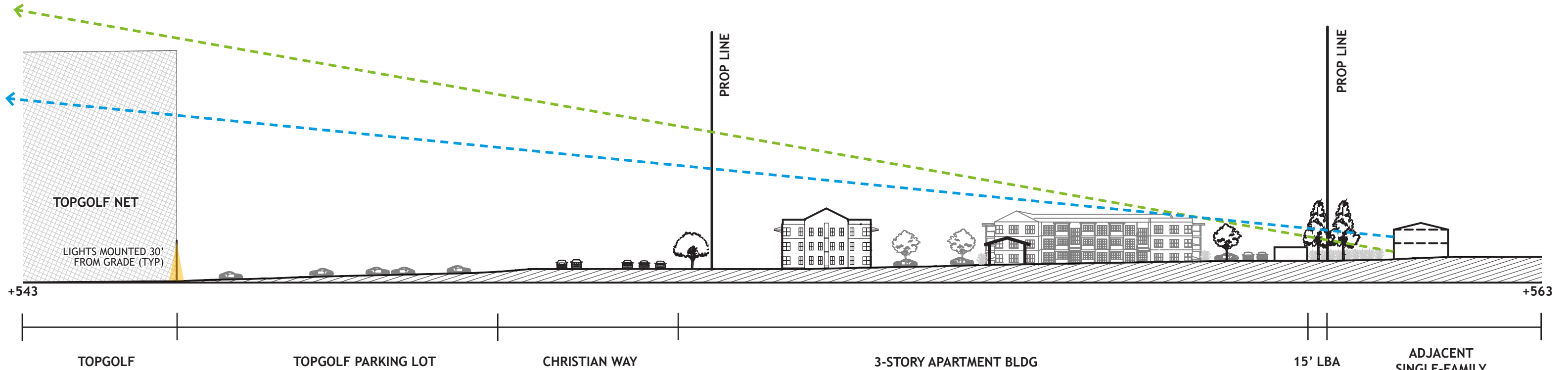
- FIRST FLOOR SIGHT LINE
- SECOND FLOOR SIGHT LINE

Section Cut of Proposed Site - TopGolf to Single-Family Neighborhood (Enlarged)

Christian Way Apartments | Louisville, KY



SECTION KEY PLAN



NOTE: WITHIN THE REGIONAL CENTER FORM DISTRICT, FIXTURES WITH A LUMEN OUTPUT GREATER THAN 1800 LUMENS PER LAMP MUST BE MOUNTED AT A HEIGHT LESS THAN 30' UNLESS OTHERWISE APPROVED.

--- FIRST FLOOR SIGHT LINE

--- SECOND FLOOR SIGHT LINE

Upton Oxmoor: Exteriors

Christian Way Apartments | Louisville, KY



Upton Oxmoor: Interiors

Christian Way Apartments | Louisville, KY

