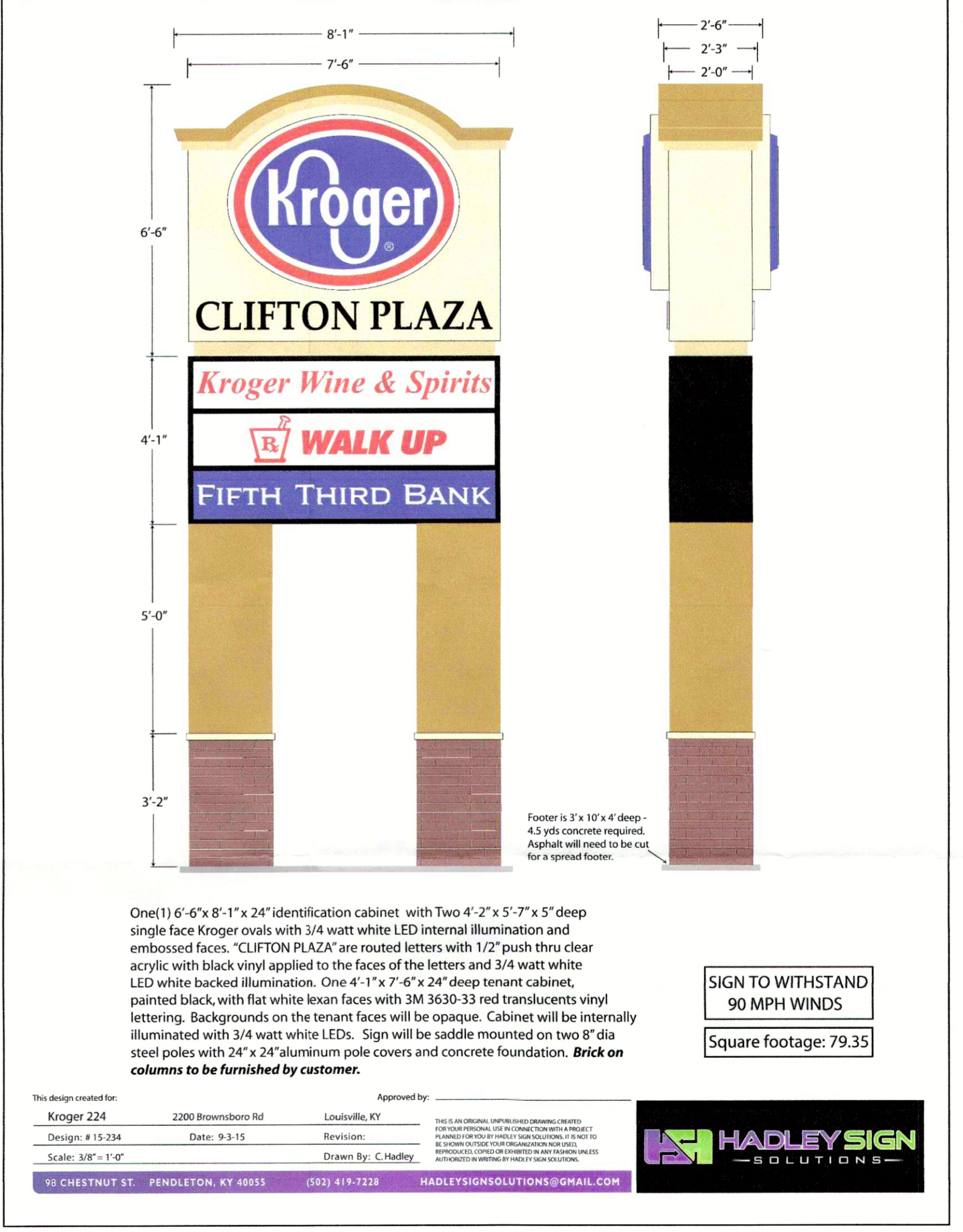
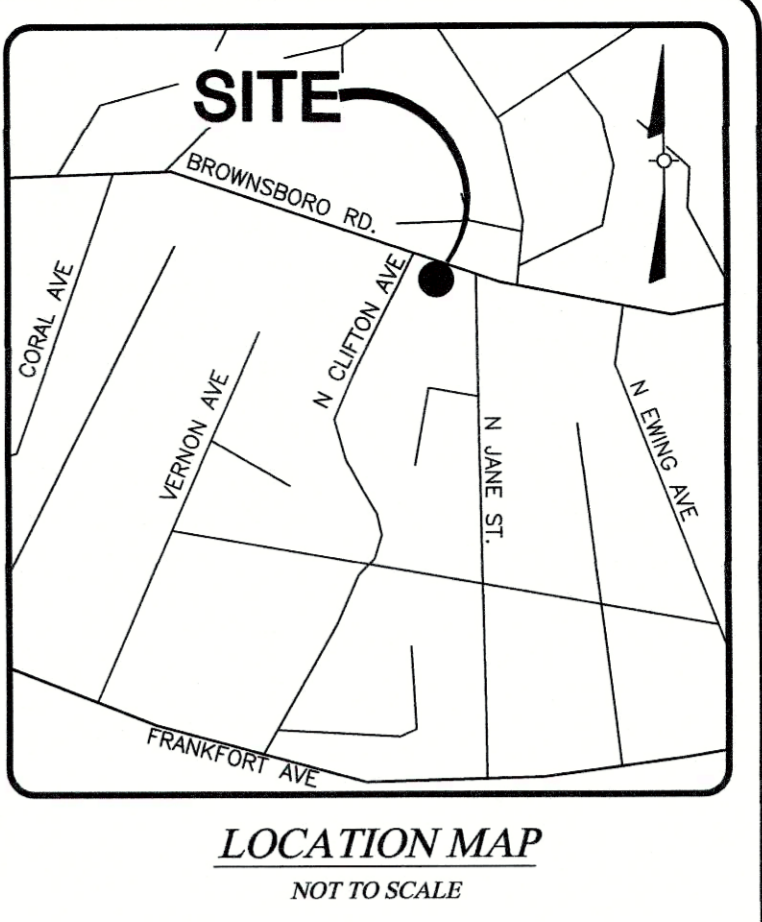
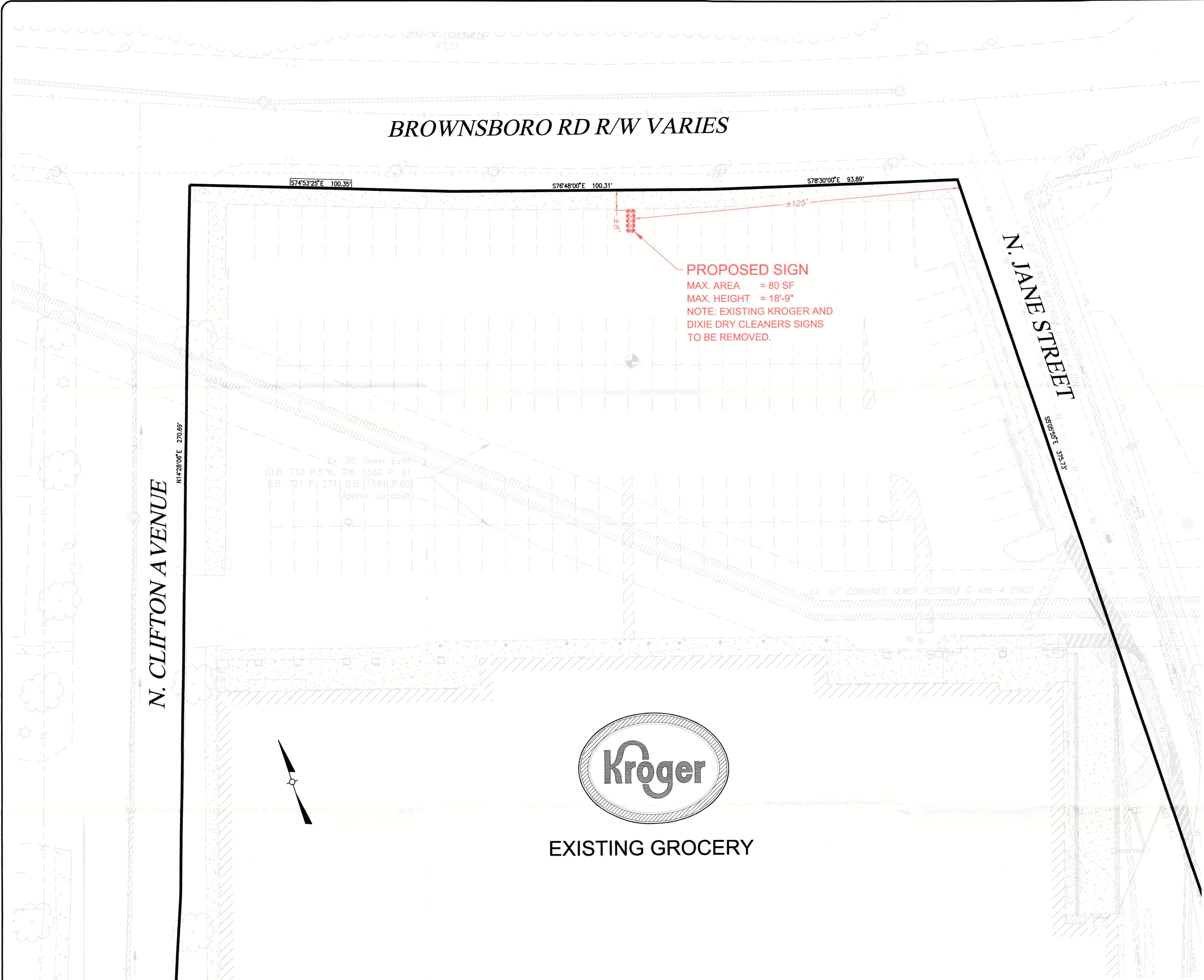


X:\AA-Projects-2008\08033 - Kroger L-224 Clifton\Signage\08033 - C01 - Kroger L-224 Clifton - Sign Plan.dwg - Plot Date: September 28, 2015 - 8:47am

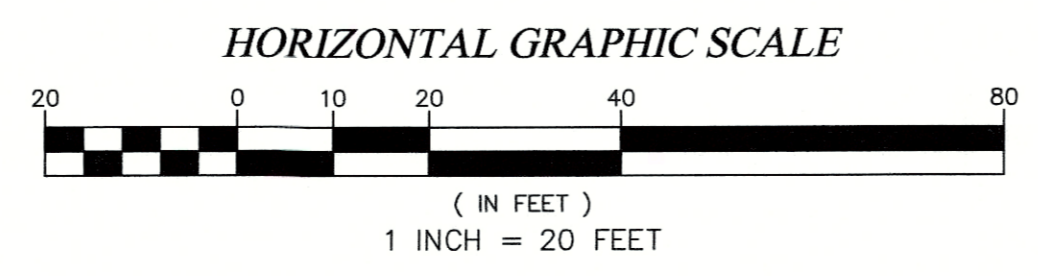


UTILITY NOTE:
 ALL UTILITIES SHOWN ON THESE PLANS ARE APPROXIMATE. INDIVIDUAL SERVICE LINES ARE NOT SHOWN. THE CONTRACTOR OR SUBCONTRACTOR SHALL NOTIFY KENTUCKY 811 (PHONE NO. 811) TWO WORKING DAYS IN ADVANCE OF ANY CONSTRUCTION ON THIS PROJECT. THIS NUMBER WAS ESTABLISHED TO PROVIDE ACCURATE LOCATIONS OF EXISTING BELOW GROUND UTILITIES (I.E. CABLES, ELECTRIC WIRES, GAS, AND WATERLINES). THE CONTRACTOR SHALL BE RESPONSIBLE FOR BECOMING FAMILIAR WITH ALL UTILITY REQUIREMENTS SET FORTH ON THE PLANS IN THE TECHNICAL SPECIFICATIONS AND SPECIAL PROVISIONS.

Revision	Date	Description	Drawn by	Checked by	Approved by
1	09-18-14	rev: per: uage@cy comments	JRH	RJR	

BENCHMARK DESCRIPTION
 TBM#1- SPIKE SET IN POWER POLE ON THE EAST SIDE OF NORTH JANE STREET, 250'± SOUTH OF THE BROWNSBORO RD INTERSECTION.
 ELEV. 456.44 (NAVD 88)

The New Look For Digging Safely in Kentucky
Kentucky 811
 Call 811 Before You Dig



RECEIVED
 SEP 30 2015
 PLANNING & DESIGN SERVICES

OWNER
 DAHEM FOUNDATION, INC.
 1531 ORMSBY STATION COURT
 LOUISVILLE, KY 40223

SITE DATA
 2200 BROWNSBORO ROAD
 LOUISVILLE, KY
 D.B. 3862, PG. 37
 TAX BLOCK 69F, LOT 42

TOTAL SITE AREA: ±3.03 ACRES
 FORM DISTRICT: TMC & TN
 EX. ZONING: C-1 & C-2
 EX. LAND USE: GROCERY

ENGINEER:
HERITAGE ENGINEERING, LLC
 642 South Fourth Street
 Louisville, KY 40202
 (502) 562-1412
 (502) 562-1413 Fax

DEVELOPER:
KROGER
 KROGER LOUISVILLE DIVISION
 1600 ORMSBY STATION CT.
 LOUISVILLE, KY 40223-4039
 (502) 423-4929

PROJECT:
 SIGNAGE EXHIBIT FOR
KROGER L-224 CLIFTON
 2200 BROWNSBORO ROAD
 LOUISVILLE, KY 40206

JOB NO: 08033
HORIZ. SCALE: 1"=20'
VERT. SCALE: N/A
DESIGNED BY: ---
DETAILED BY: JDC
CHECKED BY: SWH
DATE: SEPTEMBER 28, 2015

SHEET
C01

15VALLANTEL071