

VACINITY MAP
SCALE: 1/8"=1'-0"

1
A-1

CATEGORY 3 REVIEW 1/7/2016

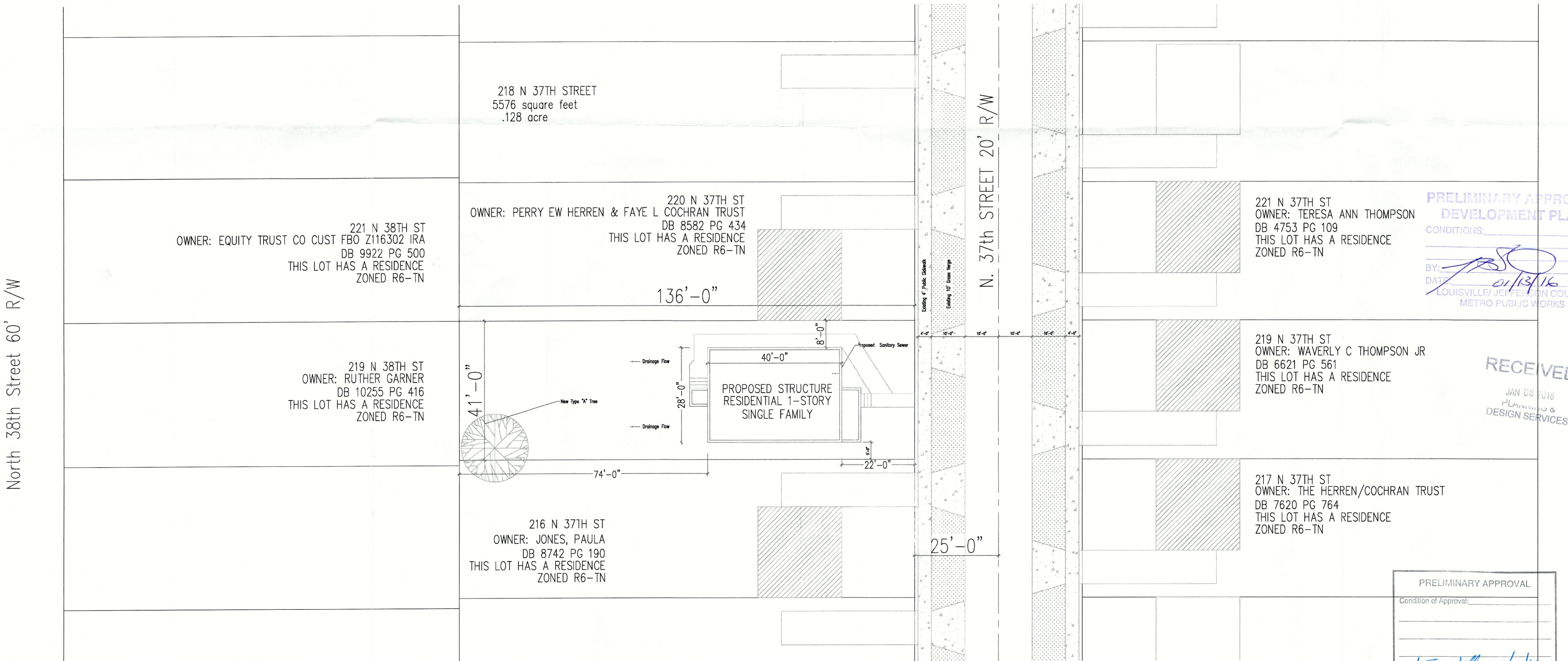
Owner: Habitat for Humanity of Metro Louisville
1620 Bank Street, Louisville, KY 40203

Density: 1 unit on .13 acre
Zoned R6 Traditional Neighborhood
FAR: .21

PRIVATE YARD DIMENSIONS: 136' DEEP X 41' WIDE
5,576 SQ. FT = 20% OF LOT AREA
Proposed Bldg. 17'-7 5/8" tall
Bldg. Footprint 1120 sq. ft.
Gross Square Footage: 1200
Tax Parcel #011J0089
DB 10413 PG 806

This parcel is currently vacant.
Proposed Use: Single Family Dwelling
Lowest Finish Floor Elevation: At or Above 446.68

Revisions:



North 38th Street 60' R/W

SITE PLAN
SCALE: 1/16"=1'-0"

1
A-1

**PRELIMINARY APPROVAL
DEVELOPMENT PLAN**

CONDITIONS:

BY: *[Signature]*
DATE: 01/13/16
LOUISVILLE/JEFFERSON COUNTY
METRO PUBLIC WORKS

RECEIVED

JAN 08 2016
PLANNING &
DESIGN SERVICES

PRELIMINARY APPROVAL

Condition of Approval:

[Signature] 1/13/16
Development Review Date
LOUISVILLE & JEFFERSON COUNTY
METROPOLITAN SEWER DISTRICT

HABITAT FOR HUMANITY
OF METRO LOUISVILLE, INC.

Design Committee

ZIP CODE: 40212
TAX BLOCK: 011J
LOT #: 0089
DOCKET #:
15DEVPLAN1191

Title: Plan Type: 3.28-2016
1 Floor/3 Bedrooms
218 N 37TH ST; 40212

Scale: VARIES BY DRAWING
Date: 1/7/2016

Sheet No.:

A-1