

RECEIVED

APR 16 2018

PLANNING &
DESIGN SERVICES



Aptitude Development

669 River Drive, Suite 402, Elmwood Park, NJ 07407

THE MARSHALL LOUISVILLE - EAST ELEVATION

LOUISVILLE, KY

The drawings presented are illustrative of character and design intent only, and are subject to change based upon final design considerations (i.e. applicable codes, structural, and MEP design requirements, unit plan / floor plan changes, etc.) © 2018 BSB Design, Inc.

APRIL 12, 2018 | SH180053.00



18 Dev Plan 1036

RECEIVED

APR 16 2018

DESIGNING &
DESIGN SERVICES



Aptitude Development

669 River Drive, Suite 402, Elmwood Park, NJ 07407

THE MARSHALL LOUISVILLE - NORTH ELEVATION

LOUISVILLE, KY

The drawings presented are illustrative of character and design intent only, and are subject to change based upon final design considerations (i.e. applicable codes, structural, and MEP design requirements, unit plan / floor plan changes, etc.) © 2018 BSB Design, Inc.

APRIL 12, 2018 | SH180053.00



18 DevPlan 1034

RECEIVED

APR 16 2018

PLANNING &
DESIGN SERVICES



Aptitude Development

669 River Drive, Suite 402, Elmwood Park, NJ 07407

THE MARSHALL LOUISVILLE - WEST ELEVATION

LOUISVILLE, KY

The drawings presented are illustrative of character and design intent only, and are subject to change based upon final design considerations (i.e. applicable codes, structural, and MEP design requirements, unit plan / floor plan changes, etc.) © 2018 BSB Design, Inc.

APRIL 12, 2018 | SH180053.00



BSB
DESIGN

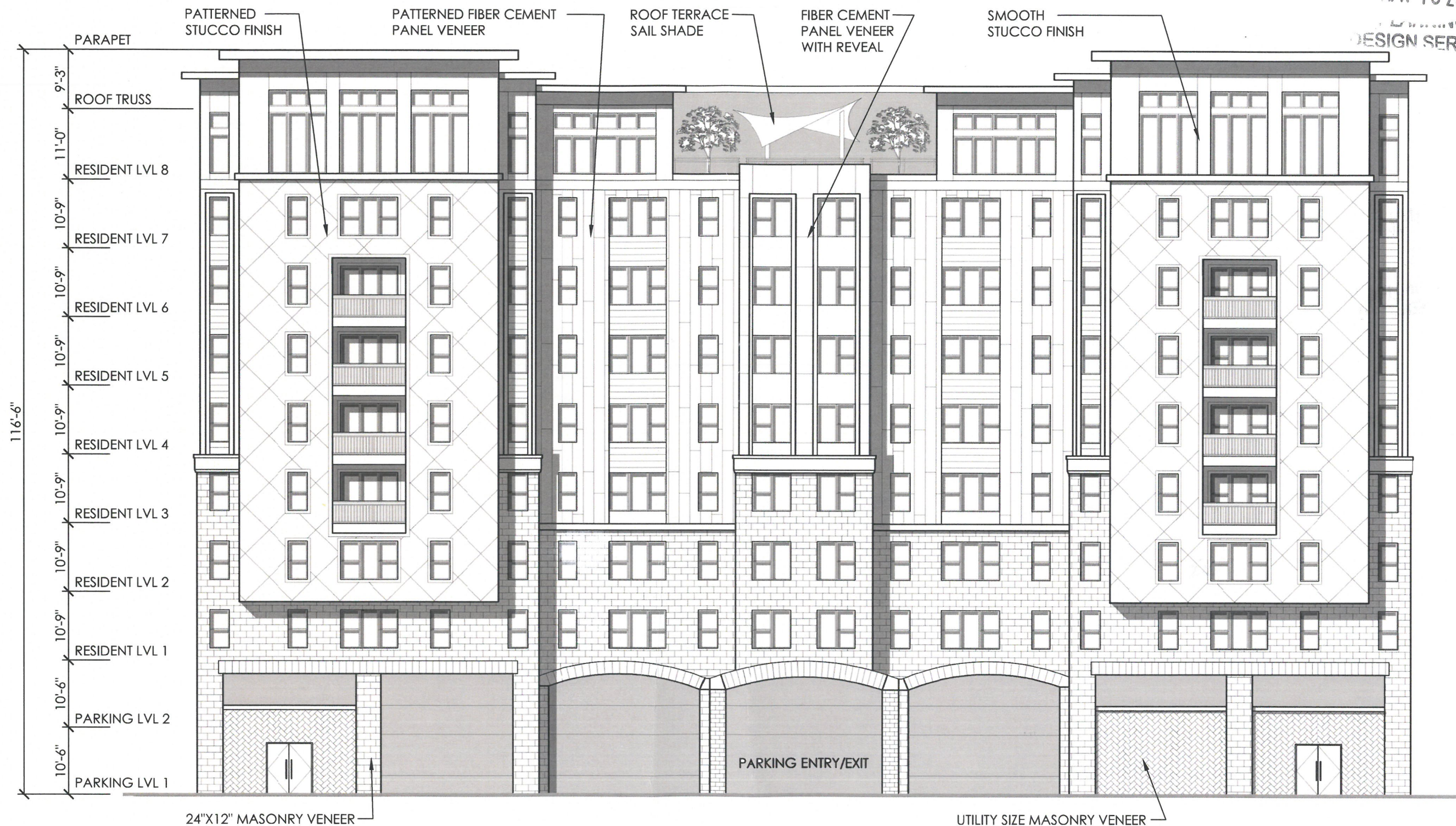
BSBDesign.com

18 Dev Plan 1036

RECEIVED

APR 16 2018

BSB DESIGN SERVICES



Aptitude Development
 669 River Drive, Suite 402, Elmwood Park, NJ 07407

THE MARSHALL LOUISVILLE - SOUTH ELEVATION
 LOUISVILLE, KY

The drawings presented are illustrative of character and design intent only, and are subject to change based upon final design considerations (i.e. applicable codes, structural, and MEP design requirements, unit plan / floor plan changes, etc.) © 2018 BSB Design, Inc.

APRIL 12, 2018 | SH180053.00



18 Dev Plan 1036