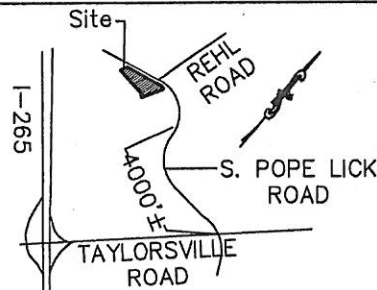


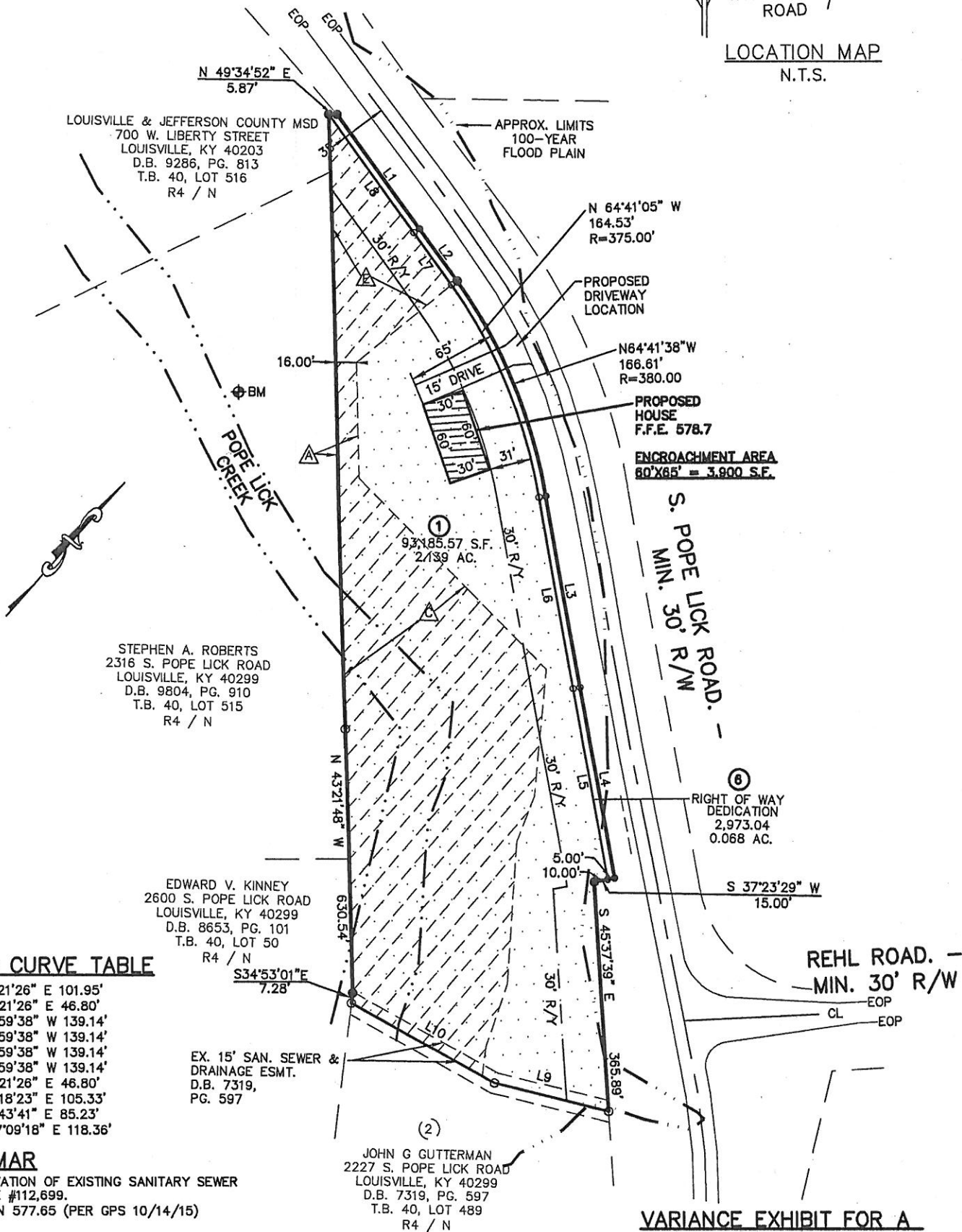
NOTE: INDIVIDUAL MSD LOT APPROVAL SHALL BE REQUIRED PRIOR TO THE ISSUANCE OF BUILDING PERMITS. THE LOWEST FINISHED FLOOR (LLF) ELEVATION MUST BE CERTIFIED BY A PROFESSIONAL LAND SURVEYOR (PLS).
LOT 1 = 578.7

EASEMENT SCHEDULE:

- △ 15' SAN. SEWER & DRAINAGE ESMT. 'GRANTED'
- △ VARIABLE WIDTH SAN. SEWER & DRAINAGE ESMT. EASEMENT IS 65' FROM TOP OF BANK OF POPE LICK CREEK AS DEPICTED ON THE PLAT DRAWING. 'GRANTED'
- △ VARIABLE SAN. SEWER & DRAINAGE ESMT. 'GRANTED'



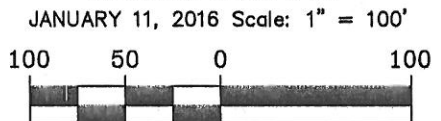
LOCATION MAP
N.T.S.



ENCROACHMENT AREA
60'x65' = 3,900 S.F.

VARIANCE EXHIBIT FOR A PROPOSED WATER WAY BUFFER ENCROACHMENT

OWNER: JOHN G GUTTERMAN
2500 S. POPE LICK ROAD
LOUISVILLE, KY 40299
T.B. 40, LOT 489
D.B. 7319, PG. 597
JEFFERSON COUNTY, KY



C. R. P. & ASSOCIATES, INC.
7321 New LaGrange Road, Suite 111
Louisville, KY. 40222
(502)423-8747

LINE & CURVE TABLE

- L1 = S 77°21'26" E 101.95'
- L2 = S 77°21'26" E 46.80'
- L3 = N 51°59'38" W 139.14'
- L4 = N 51°59'38" W 139.14'
- L5 = N 51°59'38" W 139.14'
- L6 = N 51°59'38" W 139.14'
- L7 = S 77°21'26" E 46.80'
- L8 = S 77°18'23" E 105.33'
- L9 = N 61°43'41" E 85.23'
- L10 = N 77°09'18" E 118.36'

BENCHMARK

⊕ RIM ELEVATION OF EXISTING SANITARY SEWER MANHOLE #112,699.
ELEVATION 577.65 (PER GPS 10/14/15)

LEGEND:

- DENOTES SET 1/2" REBAR 18" LONG WITH YELLOW CAP MARKED
- "CRP 2600" FOUND IPC #3476 BROWN
- R/W RIGHT-OF-WAY
- EOP EDGE OF PAVEMENT
- CL CENTERLINE OF R/W
- EX. EXISTING
- FND FOUND
- MEA MEASURED
- ▨ VARIABLE SANITARY SEWER AND DRAIN ESMT. 'GRANTED'
- APPROX. LIMITS 100-YEAR FLOOD PLAIN
- ▨ WATERWAY BUFFER

STEPHEN A. ROBERTS
2316 S. POPE LICK ROAD
LOUISVILLE, KY 40299
D.B. 9804, PG. 910
T.B. 40, LOT 515
R4 / N

EDWARD V. KINNEY
2600 S. POPE LICK ROAD
LOUISVILLE, KY 40299
D.B. 8653, PG. 101
T.B. 40, LOT 50
R4 / N

EX. 15' SAN. SEWER & DRAINAGE ESMT.
D.B. 7319, PG. 597

JOHN G GUTTERMAN
2227 S. POPE LICK ROAD
LOUISVILLE, KY 40299
D.B. 7319, PG. 597
T.B. 40, LOT 489
R4 / N