

TREES PLANTED
WITHIN 15' OF
BUILDING - TYPICAL

PRELIMINARY WEST ELEVATION

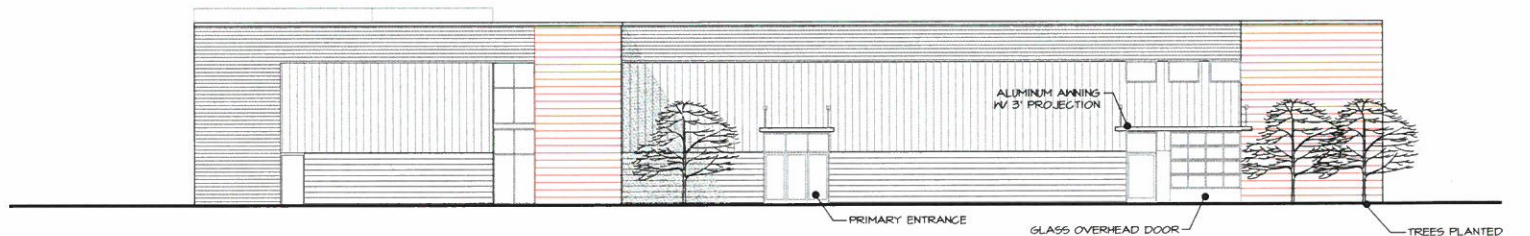
SCALE: 1/8" = 1'-0"



TREES PLANTED
WITHIN 15' OF
BUILDING - TYPICAL

PRELIMINARY SOUTH ELEVATION

SCALE: 1/8" = 1'-0"



PRIMARY ENTRANCE

GLASS OVERHEAD DOOR

TREES PLANTED
WITHIN 15' OF
BUILDING - TYPICAL

PRELIMINARY EAST ELEVATION

SCALE: 1/8" = 1'-0"



GLASS OVERHEAD DOOR

PRELIMINARY NORTH ELEVATION

SCALE: 1/8" = 1'-0"

TREES PLANTED
WITHIN 15' OF
BUILDING - TYPICAL

RECEIVED
MAY 02 2023
PLANNING & DESIGN
SERVICES



Certified By

Lynn H. Armstrong & Associates, PC - Architects
2887 Charleston Road
New Albany, Indiana 47150
Tel: 317.946.1111
Fax: 317.946.1111



Preliminary Building Elevations

THE STORAGE PROJECT

Cooper Chapel Road, Louisville, KY

Revisions	Date	By
2023-03		
JOB NO.	3/2/2023	
DRAWN BY	L.H.A.	
CHECKED BY	L.H.A.	

Sheet
A-1
Of XX Sheets

22-20NB-0161