

Neighbor Meeting – March 2, 2020

# Case No. 20-ZONEPA-0016

(Case Manager – Joel Dock – PH (502) 574-6230)

CHANGE IN ZONING FROM R-4 TO C-1 TO ALLOW A CREDIT UNION ON  
PROPERTY LOCATED AT 7600 & 7602 BARDSTOWN ROAD AND 9608, 9610, 9700  
& 9703 BARTLEY DRIVE

*c/o*



ATTORNEYS: BARDEWEPER, TALBOT & ROBERTS, PLLC

LAND PLANNERS: LANDSCAPE ARCHITECTS & ENGINEERS, LAND DESIGN & DEVELOPMENT, INC.

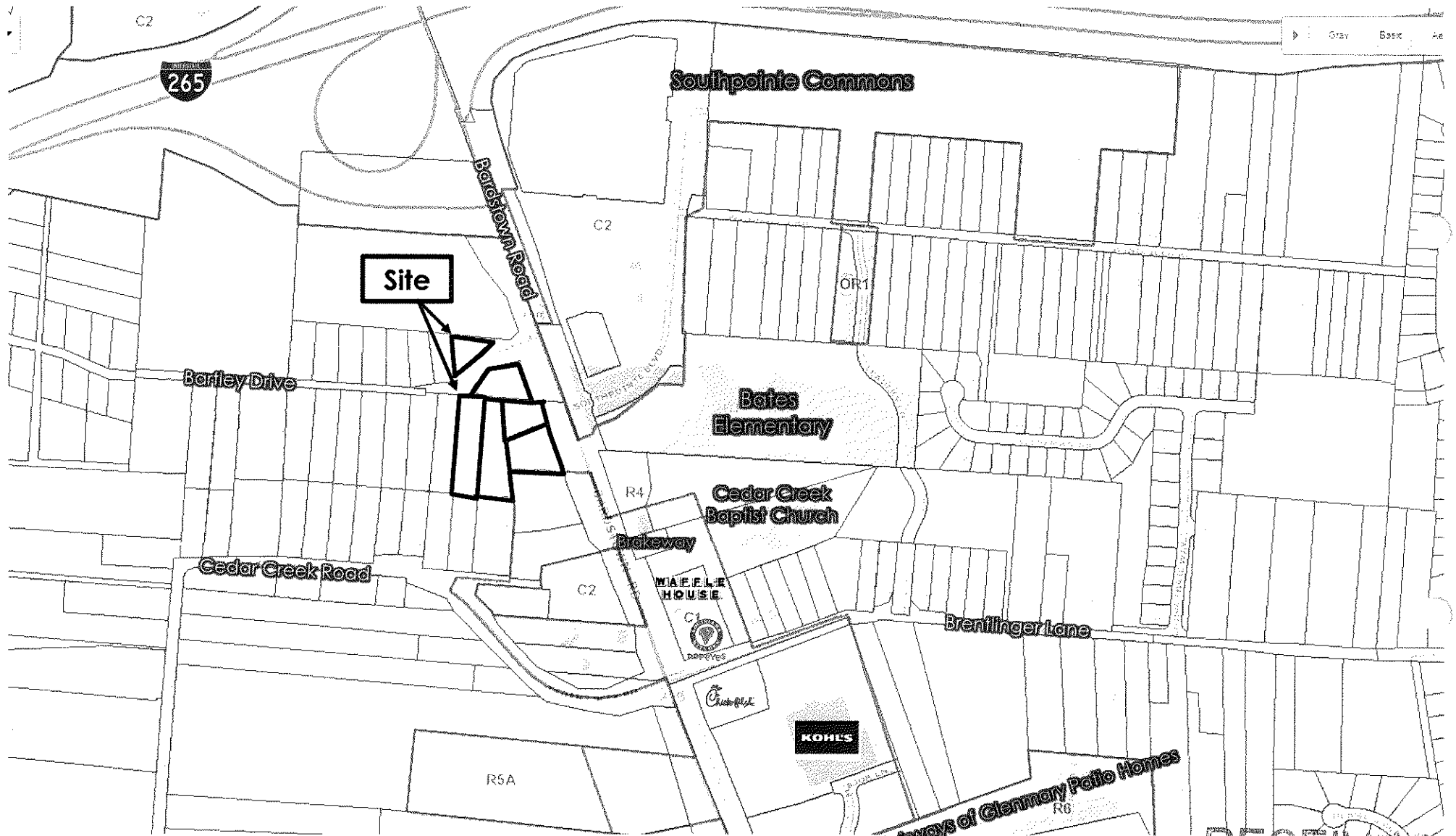
ARCHITECT: HAFFER DESIGN

RECEIVED

APR 13 2020

PLANNING & DESIGN  
SERVICES

20 - ZONE - - 0041



RECEIVED

APR 13 2020

PLANNING & DESIGN  
SERVICES

20 - ZONE - 0041



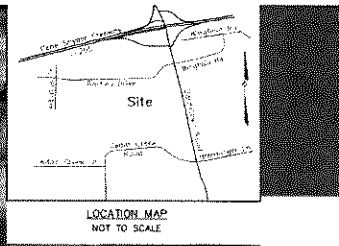
RECEIVED

APR 13 2020

PLANNING & DESIGN  
SERVICES

20 - E\_ZONE - 0041





RECEIVED

APR 13 2020

PLANNING & DESIGN SERVICES

20 - L ZONE - 0041



RECEIVED

APR 13 2020

PLANNING & DESIGN SERVICES

20 - E. ZONE - 0041

2017 proposed and withdrawn development plan under Docket No. 15ZONE1036

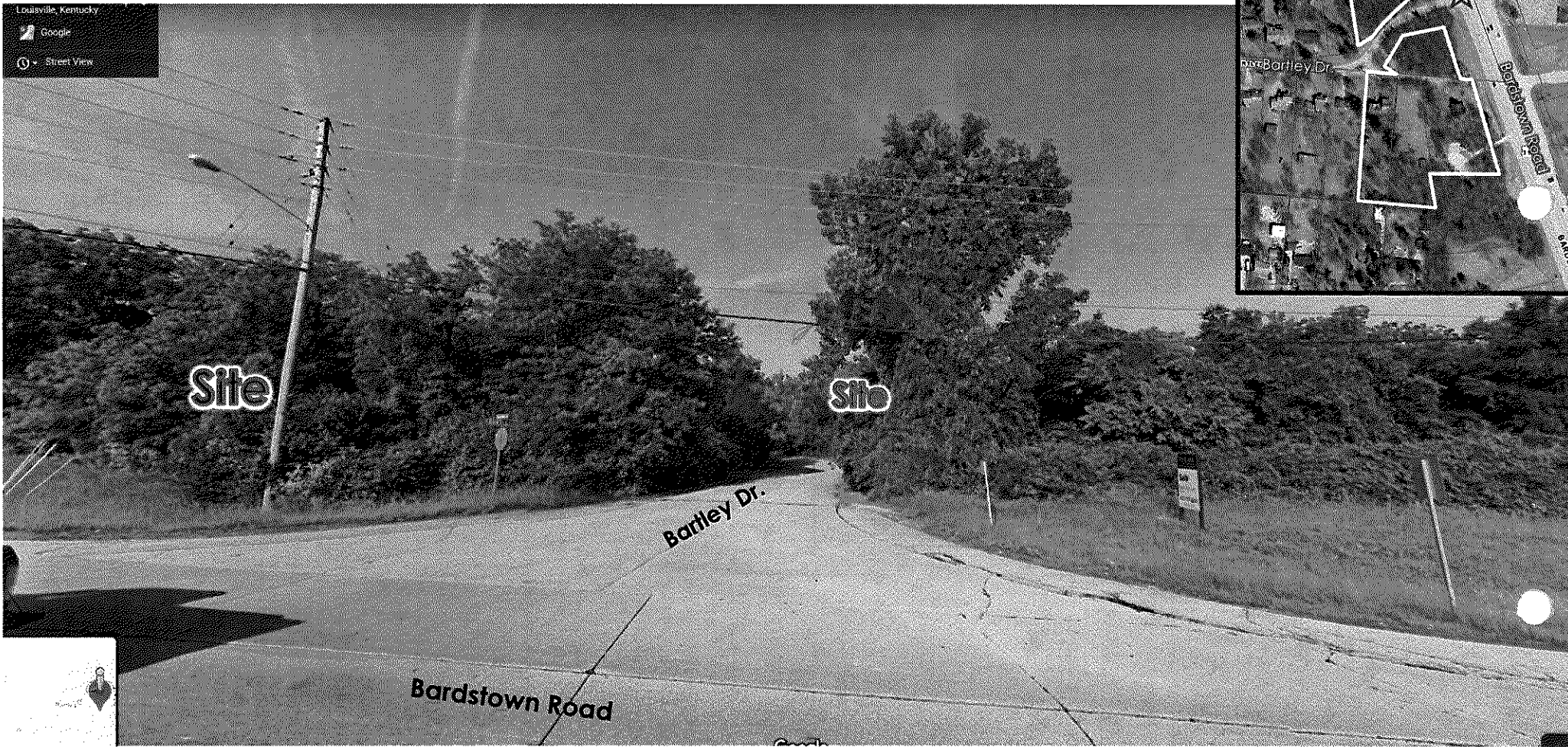


RECEIVED

APR 13 2020

20 - ZONE - 0041 PLANNING & DESIGN SERVICES





Looking west down Bartley Drive from Bardstown Road.

**RECEIVED**

APR 13 2020

PLANNING & DESIGN  
SERVICES

20 - EST. ZONE - 0041



Looking further west down Bartley Drive.

RECEIVED

APR 13 2020

PLANNING & DESIGN  
SERVICES

20 - ZONE - 0041





Looking south from Bartley Drive towards site with existing house.

**RECEIVED**  
APR 13 2020  
PLANNING & DESIGN  
SERVICES 0041  
20 - E ZONE



Looking west further down Bartley Drive.

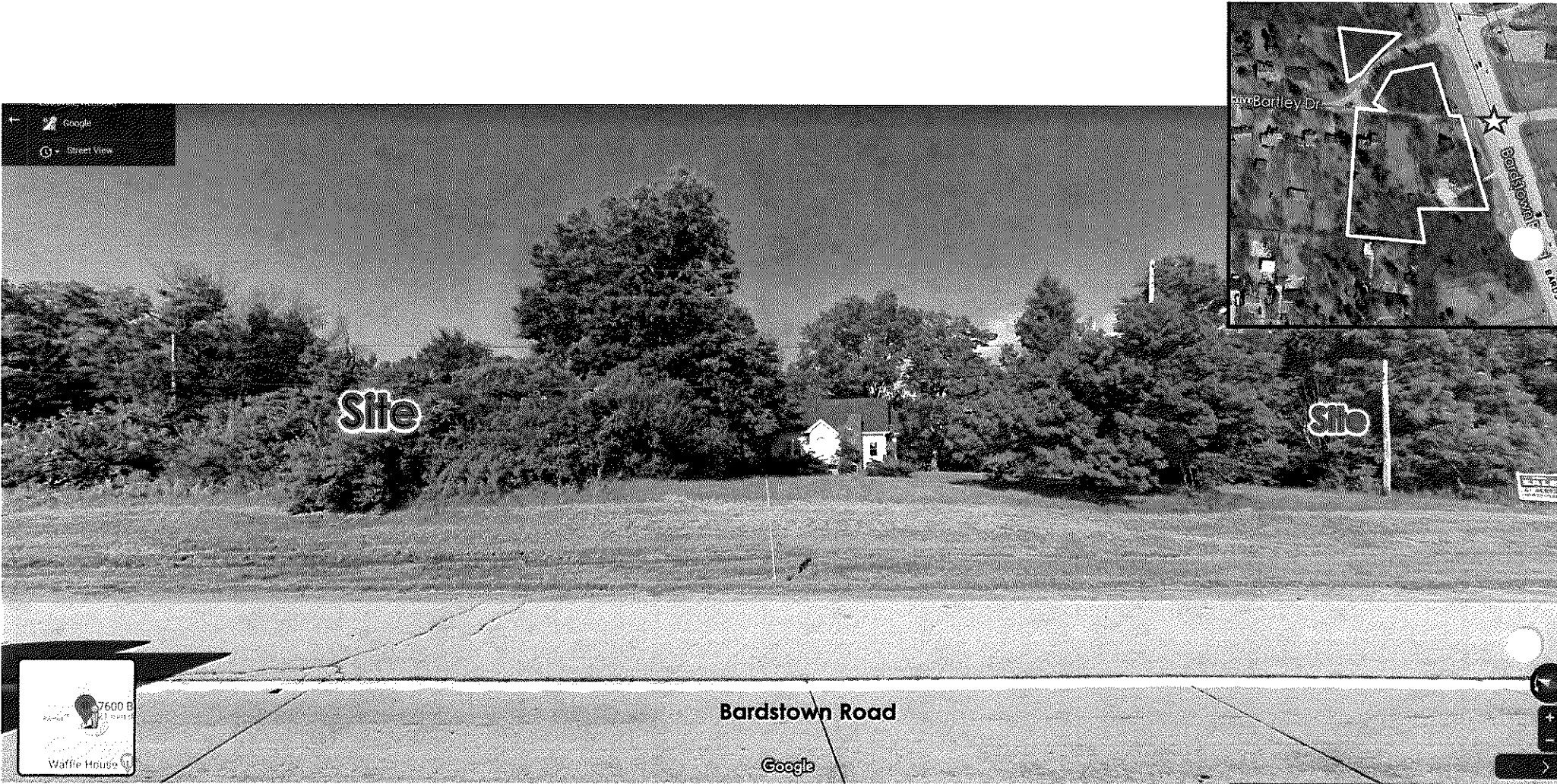
RECEIVED

APR 13 2020

PLANNING & DESIGN  
SERVICES

20 - ZONE - 0041





Looking west from Bardstown Road towards site with existing house at 7600 Bardstown Rd.

RECEIVED

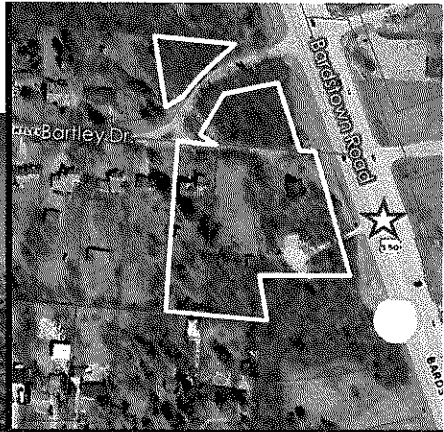
APR 13 2020

ENGINEERING & DESIGN  
SERVICES

20 - E ZONE - 0041



7602 US-150  
Louisville, Kentucky  
Google  
Street View



Site

Bardstown Road

Google

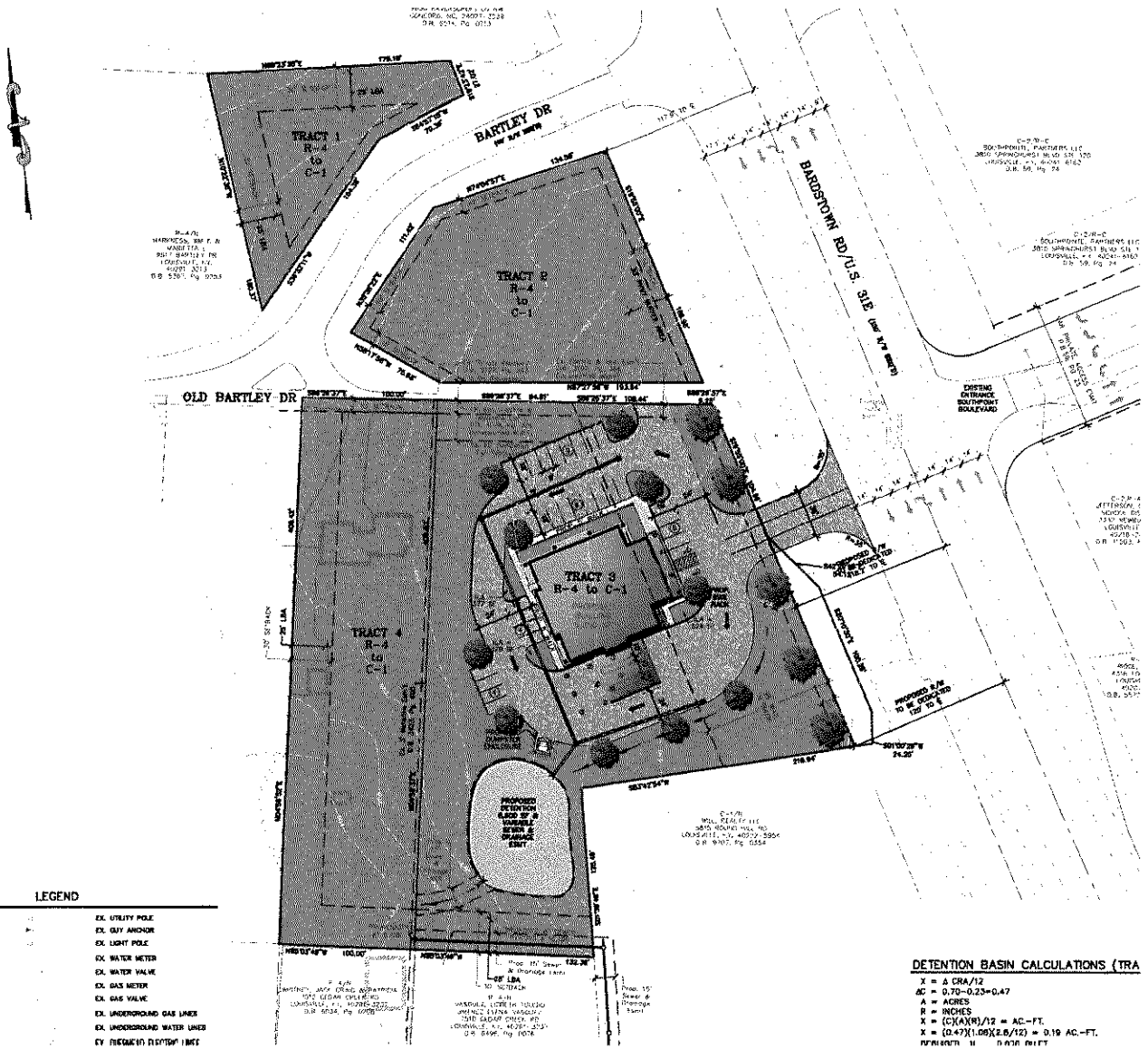
RECEIVED

APR 13 2020

PLANNING & DESIGN  
SERVICES

20 - ZONE - 0041

Looking west from Bardstown Road towards site at 7602 Bardstown Rd.



**LEGEND**

- EX. UTILITY POLE
- EX. GUY ANDROE
- EX. LIGHT POLE
- EX. WATER METER
- EX. WATER VALVE
- EX. GAS METER
- EX. GAS VALVE
- EX. UNDERGROUND GAS LINES
- EX. UNDERGROUND WATER LINES
- EX. (INDICATED BY DASH) 1/8"

**DETENTION BASIN CALCULATIONS (TRA**

$X = \Delta CRA/12$   
 $AC = 0.70 - 0.23 = 0.47$   
 $A = \text{ACRES}$   
 $R = \text{INCHES}$   
 $X = (C)(A)(R)/12 = AC-FT.$   
 $X = (0.47)(1.00)(2.5/12) = 0.10 AC-FT.$

RECEIVED

APR 13 2020

PLANNING & DESIGN SERVICES

20 - ZONE - 0041



RECEIVED

APR 13 2020

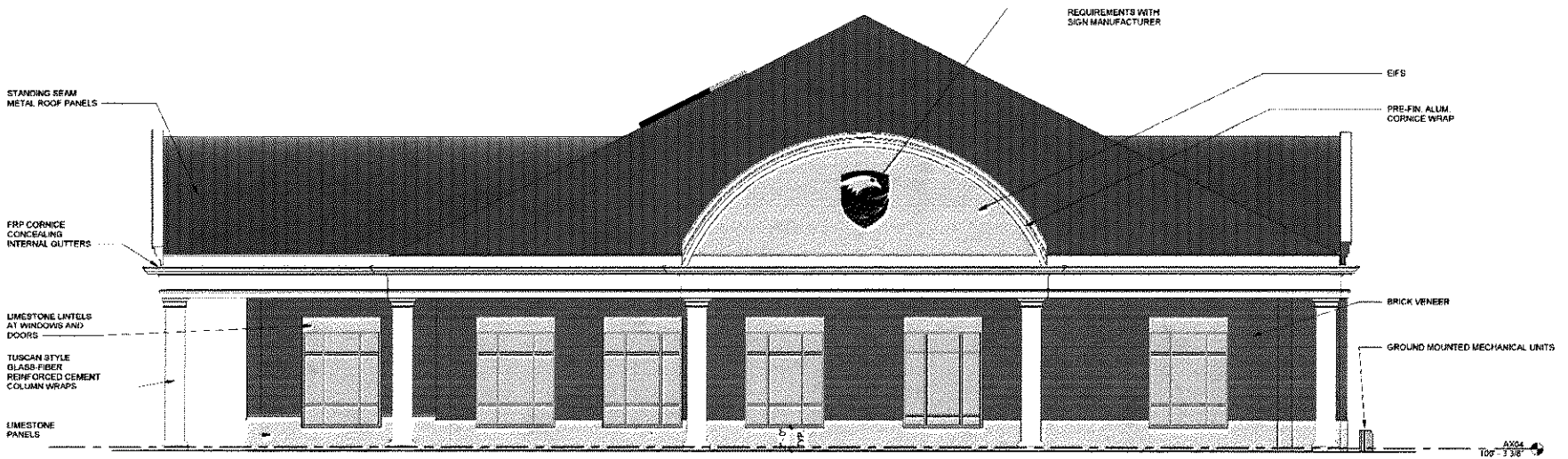
PLANNING & DESIGN  
SERVICES

20 - 1 ZONE - 0041





**EAST ELEVATION**  
3/16" = 1'-0"



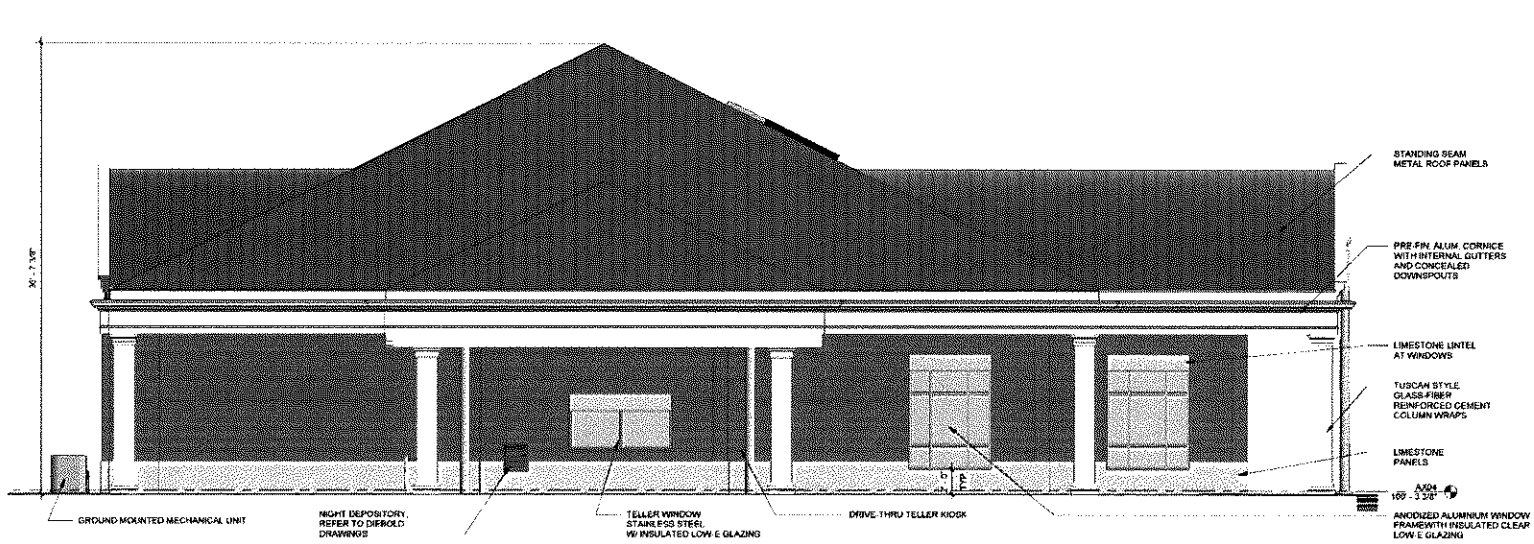
**NORTH ELEVATION**  
3/16" = 1'-0"

RECORDED

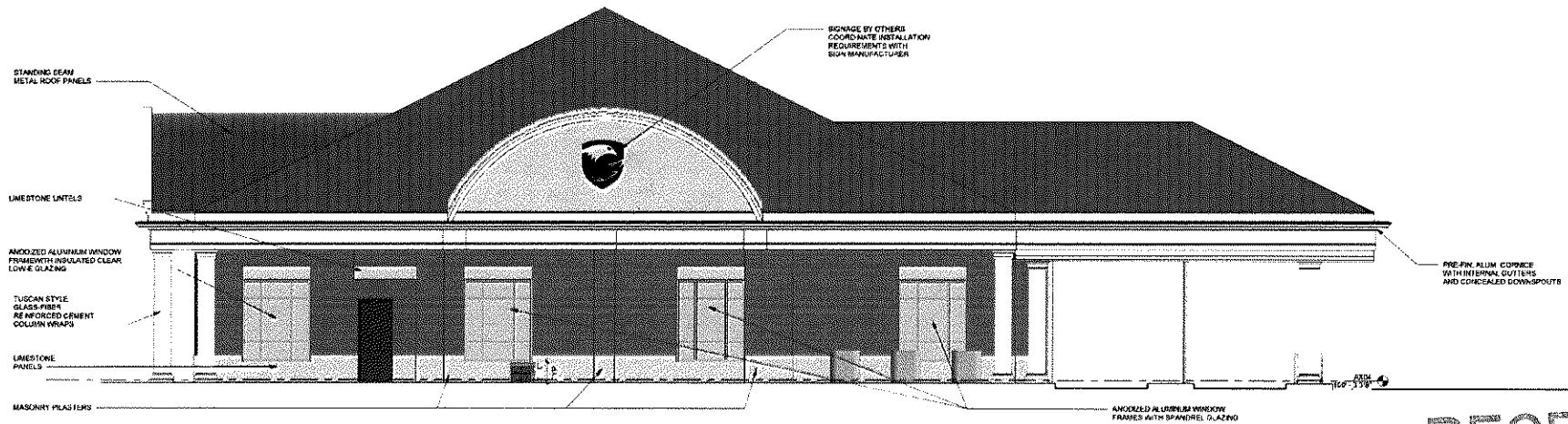
APR 13 2020

PLANNING & DESIGN  
SERVICES

20 - 5 ZONE - 0041



**SOUTH ELEVATION**  
3/16" = 1'-0"



**WEST ELEVATION**  
3/16" = 1'-0"

RECEIVED

APR 13 2020

PLANNING & DESIGN  
SERVICES

20 - ZONE - 0041