

EXHIBIT B

**Consolidated Description of
1247 and 1249 South Shelby Street**

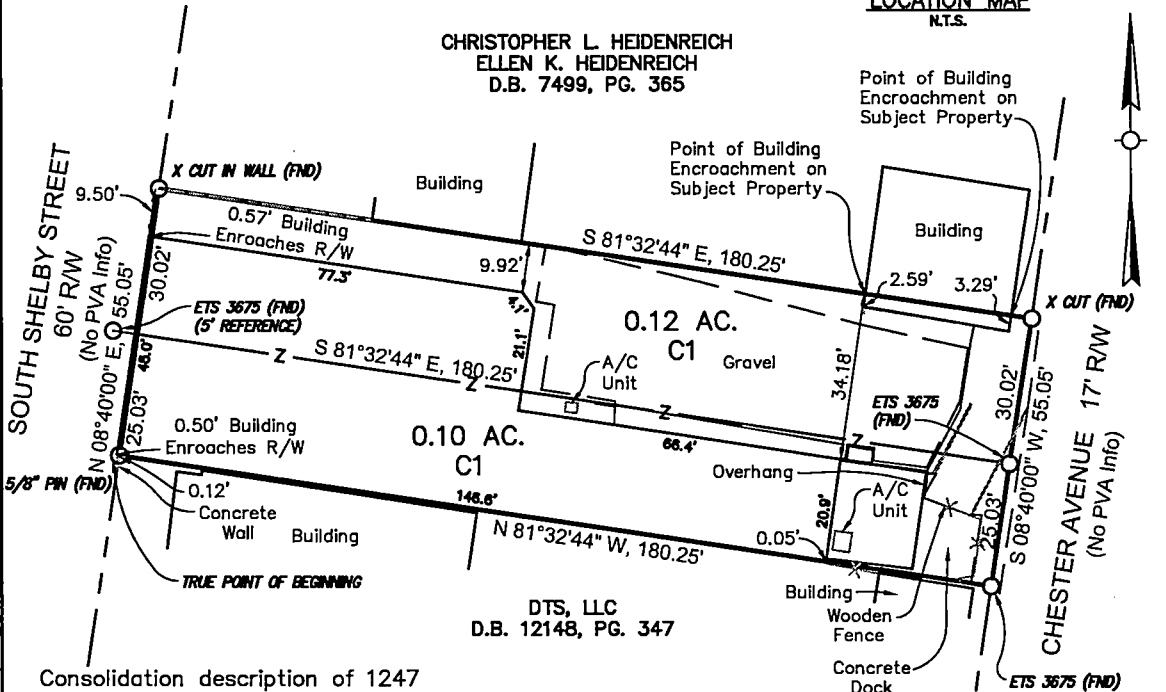
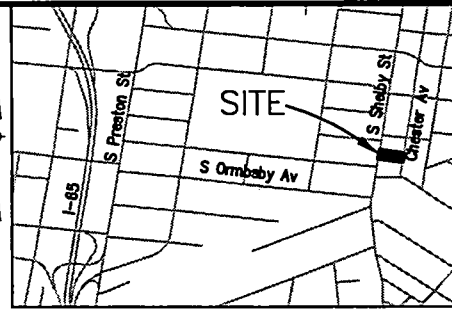
Beginning at a 5/8" iron pin on the northwest corner of a tract of land owned by DTS, LLC in Db. 12148, Pg. 347 found in the Office of the Clerk of Jefferson County Ky and on the east right-of-way line of South Shelby Street; thence with the aforesaid right-of-way N 08°40'00" E, 55.05' to an x cut in wall; thence leaving the aforesaid right-of-way line S 81°32'44" E, 180.25' to an x cut on the west right-of-way line of Chester Avenue; thence with the aforesaid right-of-way line S 08°40'00" W, 55.05' to a iron pin with cap stamped "ETS 3675"; thence leaving the aforesaid right-of-way line N 81°32'44" W, 180.25' to the point of beginning containing 0.22 acres more or less. This description created by Eric T. Sanders Ky. PLS 3675 on 11/01/2021.

Surveyor Notes

1. The survey and the information and distances shown hereon are correct.
2. The title lines and lines of actual possession are same.

Property Corner Legend

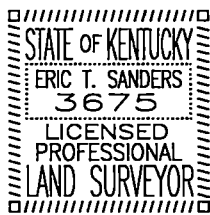
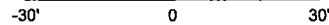
○ Found property corner as noted



Consolidation description of 1247 and 1249 South Shelby Street

Beginning at a 5/8" Iron pin on the northwest corner of a tract of land owned by DTS, LLC in Db. 12148, Pg. 347 found in the Office of the Clerk of Jefferson County Ky and on the east right-of-way line of South Shelby Street; thence with the aforesaid right-of-way N 08°40'00" E, 55.05' to an x cut in wall; thence leaving the aforesaid right-of-way line S 81°32'44" E, 180.25' to an x cut on the west right-of-way line of Chester Avenue; thence with the aforesaid right-of-way line S 08°40'00" W, 55.05' to a iron pin with cap stamped "ETS 3675"; thence leaving the aforesaid right-of-way line N 81°32'44" W, 180.25' to the point of beginning containing 0.22 acres more or less. This description created by Eric T. Sanders Ky. PLS 3675 on 11/01/2021.

Graphic Scale



In Addition To A Trimble S-6 Robotic Instrument, Global Positioning System Was Used To Locate The Control For The Site And Some Monumentation. Points Located By Gps Eq. Was Less Than 10% The Points Were Located In Real Time Using One Trimble R-10 Rover, Which Is A Dual Frequency Receiver, Receiving Network Corrections From The Kentucky Transportation Cabinet Network. The Horizontal Datum Used Was The Kentucky State Plane Coordinate System, North Zone, North American Datum Of 1983, Geoid 12B. Relative Positional Accuracy Varied From 0.01' To 0.04' Horizontally.

BOUNDARY SURVEY

PROPERTY INFORMATION:
BREITENSTEIN PROPERTIES LLC
1247 S SHELBY STREET
LOUISVILLE, KENTUCKY 40204-1837
D.B. 11360, PG. 508
Parcel ID 025D00090000

LAND SURVEYOR'S CERTIFICATE

I HEREBY CERTIFY THAT THE PLAT AND SURVEY SHOWN HEREON WERE MADE UNDER MY SUPERVISION AND THAT THE ANGULAR AND LINEAR MEASUREMENTS AS WITNESSED BY MONUMENTS SHOWN HEREON ARE TRUE AND CORRECT TO THE BEST OF MY KNOWLEDGE AND BELIEF. THIS SURVEY WAS MADE BY THE METHOD OF RANDOM TRAVERSE AND THE BEARING AND DISTANCES HAVE NOT BEEN ADJUSTED FOR CLOSURE. THE SURVEY AS SHOWN HEREON IS AN "URBAN" SURVEY AND THE ACCURACY AND PRECISION OF SAID SURVEY IS MORE THAN 1 IN 32,000 AND MEETS ALL SPECIFICATIONS OF THIS CLASS AS STATED IN KAR 201.18.150.

Eric T. Sanders 11/3/2021
ERIC T. SANDERS P.L.S. #3675 DATE:

E.T.S.
SURVEYING, INC.
3316 Furman Blvd.
Louisville, KY 40220
(502) 939-2210
(502) 485-1216 Fax