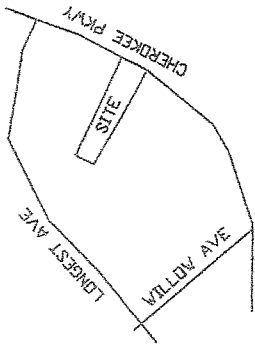


LOCATION MAP

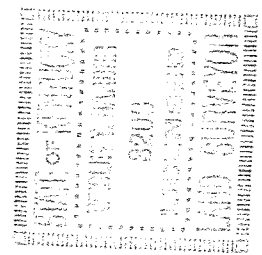
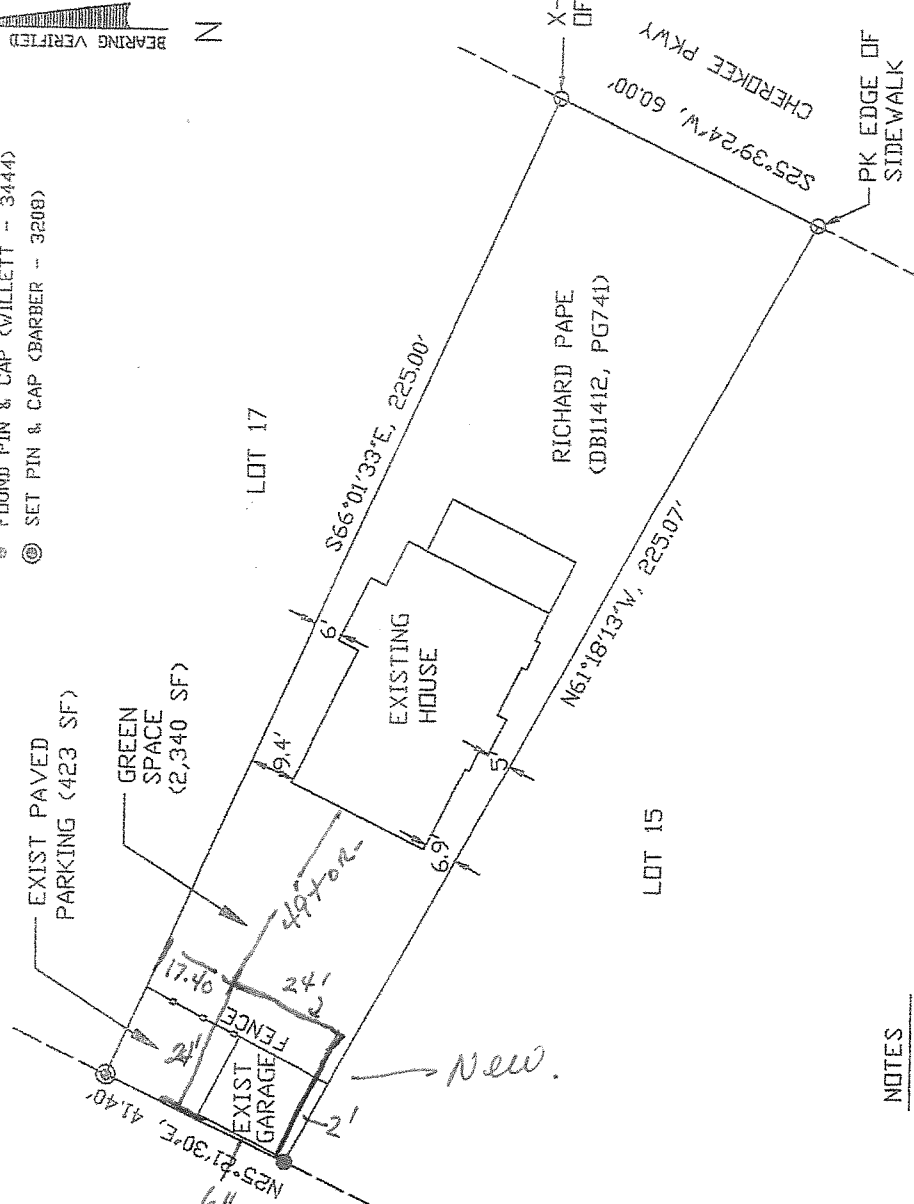


PROPERTY IS LOCATED ON THE EAST SIDE OF CHEROKEE ABOUT 500' SOUTH OF INTERSECTION WITH LONGEST AVE IN LOUISVILLE, JEFFERSON COUNTY, KY.

LEGEND

- SEE LABEL
- ⊙ FOUND PIN & CAP (WILLET - 3444)
- ⊙ SET PIN & CAP (BARBER - 3208)

BEARING VERIFIED 5/17/19



Wesley Barber

SURVEY PLAT  
OF PROPERTY AT  
2507 CHEROKEE PKWY  
LOUISVILLE, KY

WESLEY BARBER ENGINEERING AND  
LAND SURVEYING  
203 E. MILL WATER FALLS  
SHEPHERDSVILLE, KY 40165  
(502)744-5772

DR: VTB SCALE: 1"= 40' DATE: 10/23/19

**SURVEYOR'S CERTIFICATE**

I HEREBY CERTIFY THAT THIS PLAT DEPICTS A SURVEY MADE UNDER MY DIRECTION BY THE METHOD OF RANDOM TRAVERSE, WITH SIDESHOTS. THE UNADJUSTED PRECISION RATIO OF THIS TRAVERSE WAS 1/67,111 AND THE TRAVERSE WAS NOT ADJUSTED. THIS SURVEY MEETS OR EXCEEDS THE MINIMUM STANDARDS FOR A CLASS URBAN SURVEY AND COMPLIES WITH 201 KAR 18150.

NOTES

1. BEARINGS AND DISTANCES WERE BASED ON A MAGNETIC READING TAKEN IN THE FIELD ALONG A RANDOM TRAVERSE LINE.
2. PROPERTY IS SUBJECT TO ANY EASEMENTS OR RESTRICTIONS EITHER IMPLIED OR OF RECORD.
3. SOURCE OF TITLE: TRACT SHOWN HEREIN WERE CONVEYED BY DEED IN DB11412, PG741 AND IS LOT 16 OF REVISED PLAN OF LONGEST SUBD IN PLAT AT PBI, PG13 OF RECORD IN THE JEFFERSON COUNTY COURT CLERK OFFICE.

GRAPHIC SCALE



RECEIVED

NOV 04 2019

PLANNING &  
DESIGN SERVICES