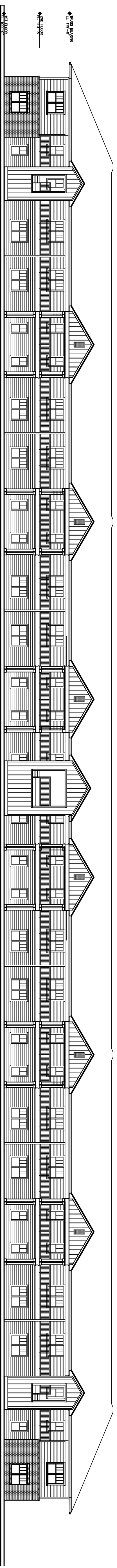
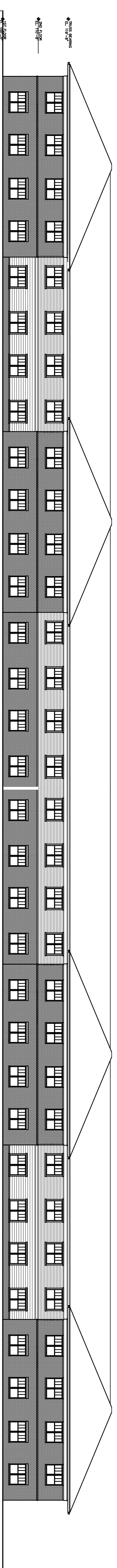


Floor Plan



Courtyard Elevation



Rear Elevation

Proposed Cane Run Road Development Family Scholar House

Louisville, Kentucky

CONCEPTUAL MASTER PLAN

PROJECT: _____
 PAGE NO.: _____
 SITE PLAN
 11.5.2014
 REVISION: _____
 WDN
 TITLE: _____
 PROJECT NO.: _____
 XXX-XXXXXX
 SHEET XX OF XX REVISION XX

THIS DOCUMENT AND THE MATERIALS CONTAINED HEREIN ARE THE PROPERTY OF HERSHMAN JAMBUKUTIA LLP. ANY REPRODUCTION OR TRANSMISSION OF THIS DOCUMENT OR THE MATERIALS CONTAINED HEREIN IN ANY FORM OR BY ANY MEANS, ELECTRONIC OR MECHANICAL, INCLUDING PHOTOCOPYING, RECORDING, OR BY ANY INFORMATION STORAGE AND RETRIEVAL SYSTEM, WITHOUT THE WRITTEN PERMISSION OF HERSHMAN JAMBUKUTIA LLP IS STRICTLY PROHIBITED. HERSHMAN JAMBUKUTIA LLP AND ITS AFFILIATED FIRMS ARE NOT PROVIDING ANY PROFESSIONAL SERVICES UNDER THIS DOCUMENT. HERSHMAN JAMBUKUTIA LLP AND ITS AFFILIATED FIRMS ARE NOT PROVIDING ANY PROFESSIONAL SERVICES UNDER THIS DOCUMENT. HERSHMAN JAMBUKUTIA LLP AND ITS AFFILIATED FIRMS ARE NOT PROVIDING ANY PROFESSIONAL SERVICES UNDER THIS DOCUMENT.

**Hershman
Jambukutia**
 ATTORNEYS AT LAW
 1111 FIFTH AVENUE, SUITE 2000
 NEW YORK, NY 10017
 212.512.2000 FAX 212.512.2001
 www.hershmanjambukutia.com