

**CASE #**

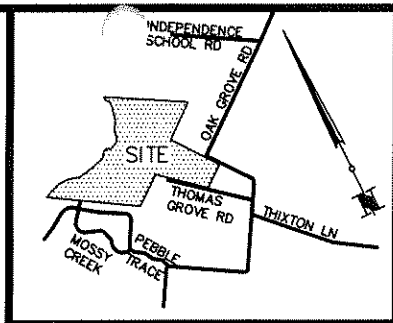
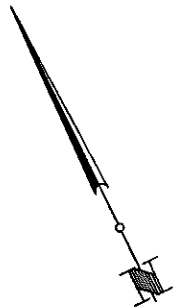
**LAND DESCRIPTION**

**REZONING FROM RR TO R4**

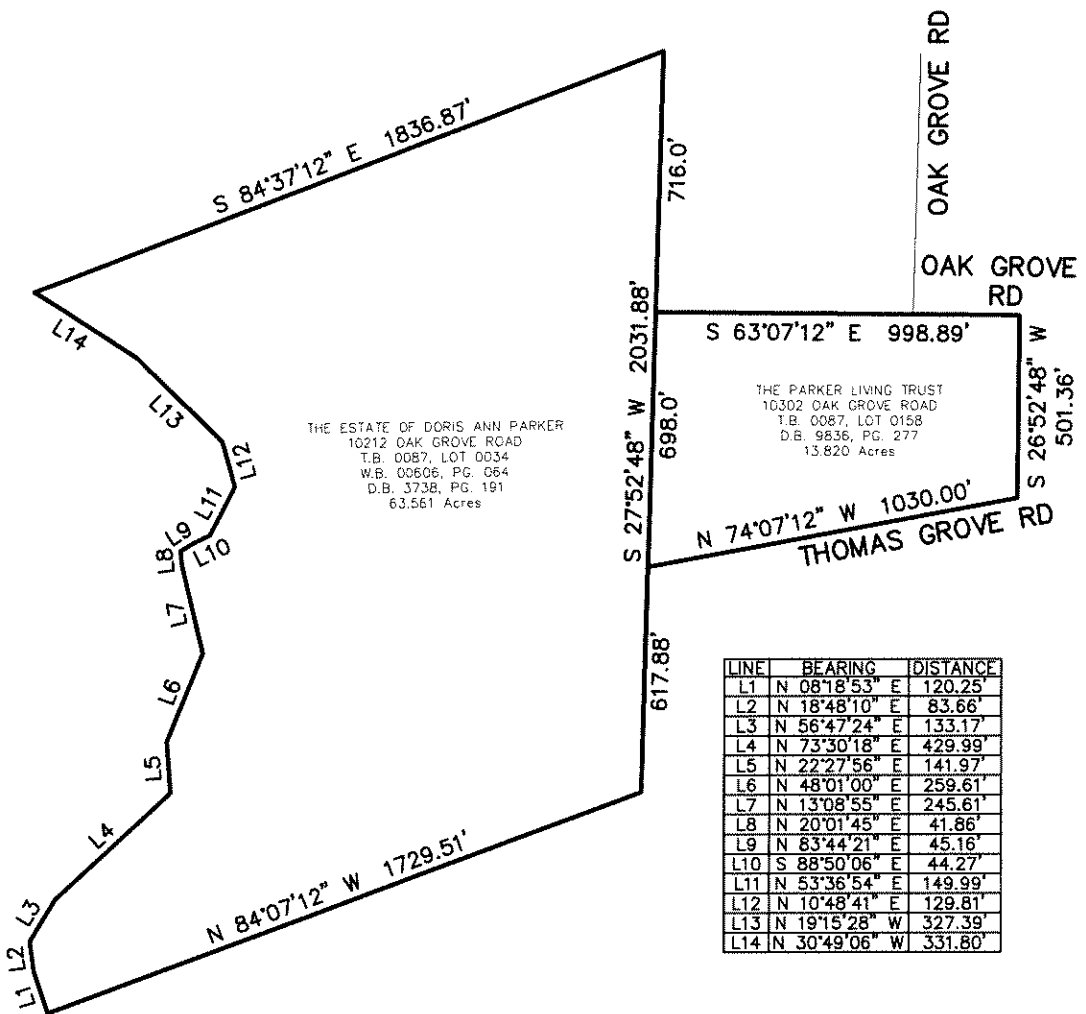
Being a certain tract of land in Jefferson County, Kentucky, located west of Thixton Lane, south of Independence School Road, south and west of Oak Grove Road and being more particularly described as follows:

Beginning at the northeast corner of a tract of land conveyed to The Parker Living Trust in Deed Book 9836, Page 277 of record in the Clerk's office of Jefferson County, Kentucky said point also being in the southerly right-of-way line of Oak Grove Road; Thence leaving said right-of-way line S 26°52'48" W, a distance of 501.36 feet to the southeast corner of said tract and in the north line of Thomas Grove Road, a 50' private access easement; Thence N 74°07'12" W, a distance of 1030.00 feet; Thence S 27°52'48" W, a distance of 617.88 feet; Thence N 84°07'12" W, a distance of 1729.51 feet to the center of Cedar Creek; Thence with the creek the following 14 calls, N 08°18'53" E, a distance of 120.25 feet; Thence N 18°48'10" E, a distance of 83.66 feet; Thence N 56°47'24" E, a distance of 133.17 feet; Thence N 73°30'18" E, a distance of 429.99 feet; Thence N 22°27'56" E, a distance of 141.97 feet; Thence N 48°01'00" E, a distance of 259.61 feet; Thence N 13°08'55" E, a distance of 245.61 feet; Thence N 20°01'45" E, a distance of 41.86 feet; Thence N 83°44'21" E, a distance of 45.16 feet; Thence N 88°50'06" E, a distance of 44.27 feet; Thence N 53°36'54" E, a distance of 149.99 feet; Thence N 10°48'41" E, a distance of 129.81 feet; Thence N 19°15'28" W, a distance of 327.39 feet; Thence N 30°49'06" W, a distance of 331.80 feet; Thence leaving said creek S 84°37'12" E, a distance of 1836.87 feet; Thence S 27°52'48" W, a distance of 716.00 feet; Thence S 63°07'12" E, a distance of 998.89 feet to the point of beginning.

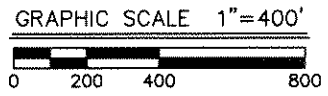
Having an area of 3,370,741 Square feet, 77.381 Acres.



**LOCATION MAP**  
NO SCALE



LINE	BEARING	DISTANCE
L1	N 08°18'53\"	E 120.25'
L2	N 18°48'10\"	E 83.66'
L3	N 56°47'24\"	E 133.17'
L4	N 73°30'18\"	E 429.99'
L5	N 22°27'56\"	E 141.97'
L6	N 48°01'00\"	E 259.61'
L7	N 13°08'55\"	E 245.61'
L8	N 20°01'45\"	E 41.86'
L9	N 83°44'21\"	E 45.16'
L10	S 88°50'06\"	E 44.27'
L11	N 53°36'54\"	E 149.99'
L12	N 10°48'41\"	E 129.81'
L13	N 19°15'28\"	W 327.39'
L14	N 30°49'06\"	W 331.80'



This exhibit does not represent a boundary survey and is not intended for land transfer.  
This plot was prepared to the standards of section 13 of 201 KAR 18:150.



**MINDEL SCOTT**  
ENGINEERING ► SURVEYING ►  
PLANNING ► LANDSCAPE ARCHITECTURE  
5151 Jefferson Blvd. Louisville, KY 40219  
502-485-1508 ► MindelScott.com

**ZONING EXHIBIT**  
PROPERTY OF:  
THE ESTATE OF DORIS ANN PARKER  
THE PARKER LIVING TRUST  
TAX BLOCK 0087, LOTS 34 & 158  
DEED BOOK 3738, PAGE 191  
DEED BOOK 9836, PAGE 277  
PROPERTY ADDRESS:  
10212 & 10302 OAK GROVE ROAD  
LOUISVILLE, KY 40291  
DATE: 4/22/21 SCALE: 1"=400'