

RECEIVED
MAY 01 2019
PLANNING &
DESIGN SERVICES

Case # 1906P1041

337 Possum Path
Louisville, KY 40214

1906P1041



RECEIVED

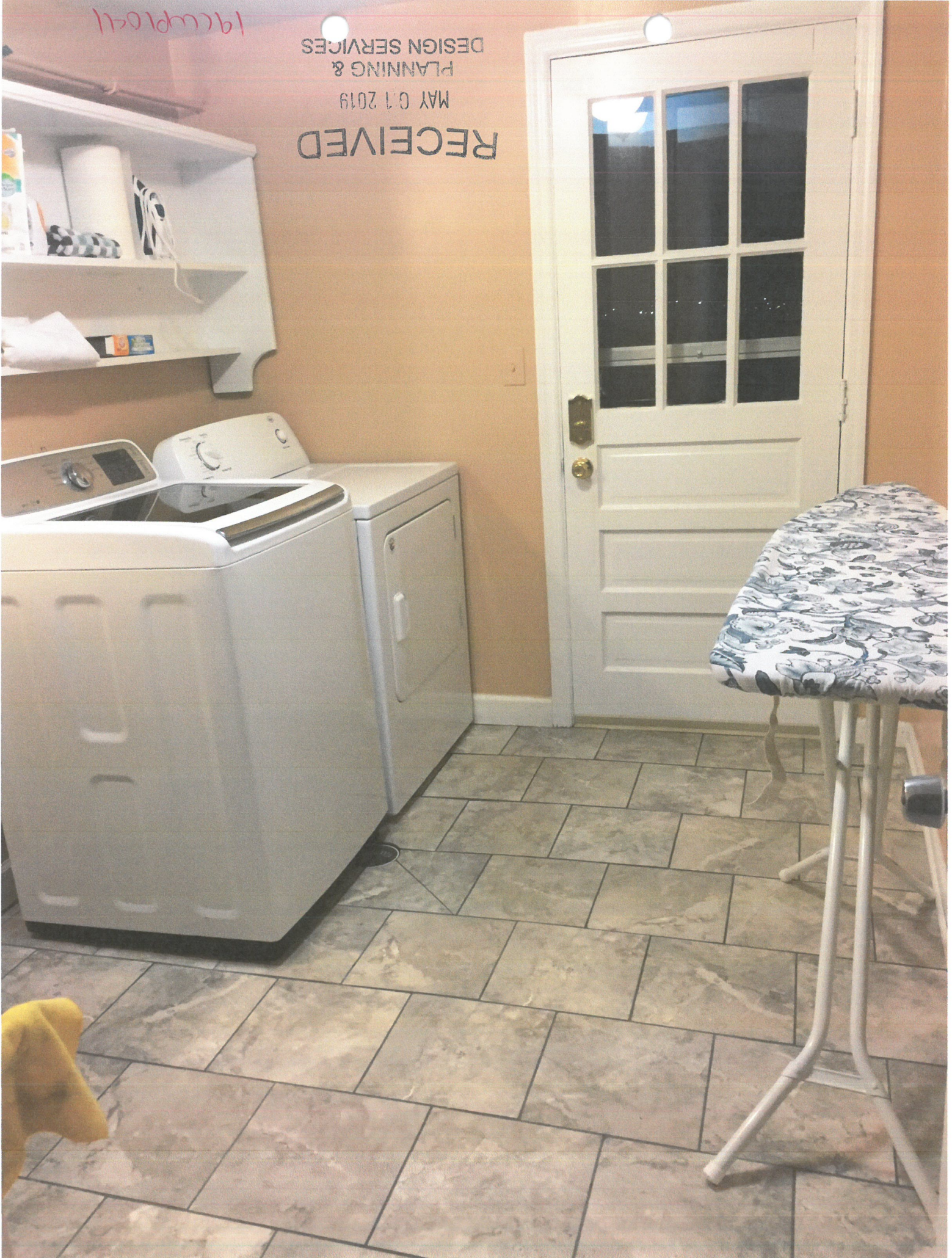
MAY 01 2019

PLANNING &
DESIGN SERVICES

19CWP1041

19cwp1041

RECEIVED
MAY 01 2019
PLANNING &
DESIGN SERVICES



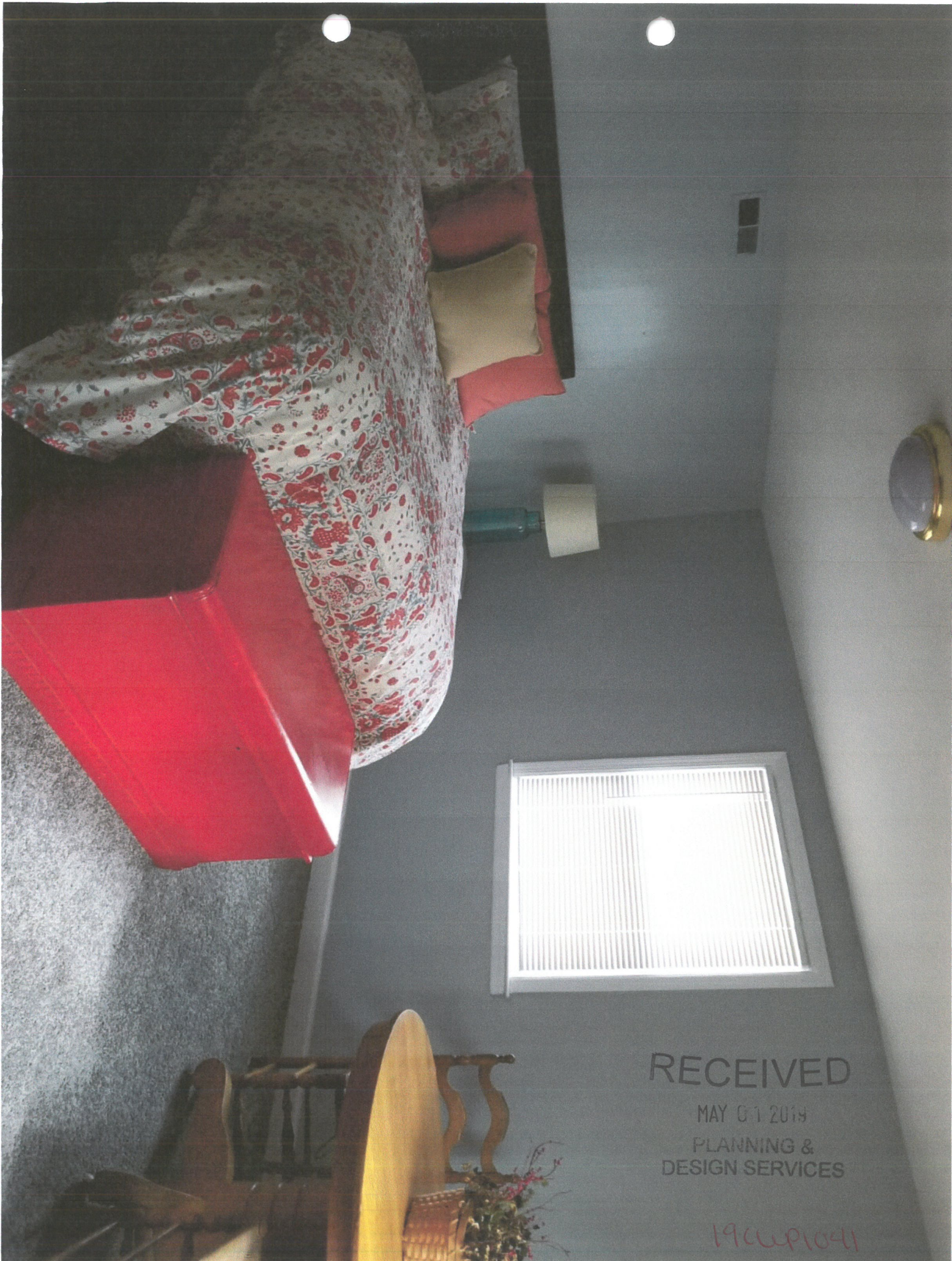


RECEIVED

MAY 07 2019

PLANNING &
DESIGN SERVICES

19CW1041



RECEIVED

MAY 01 2019

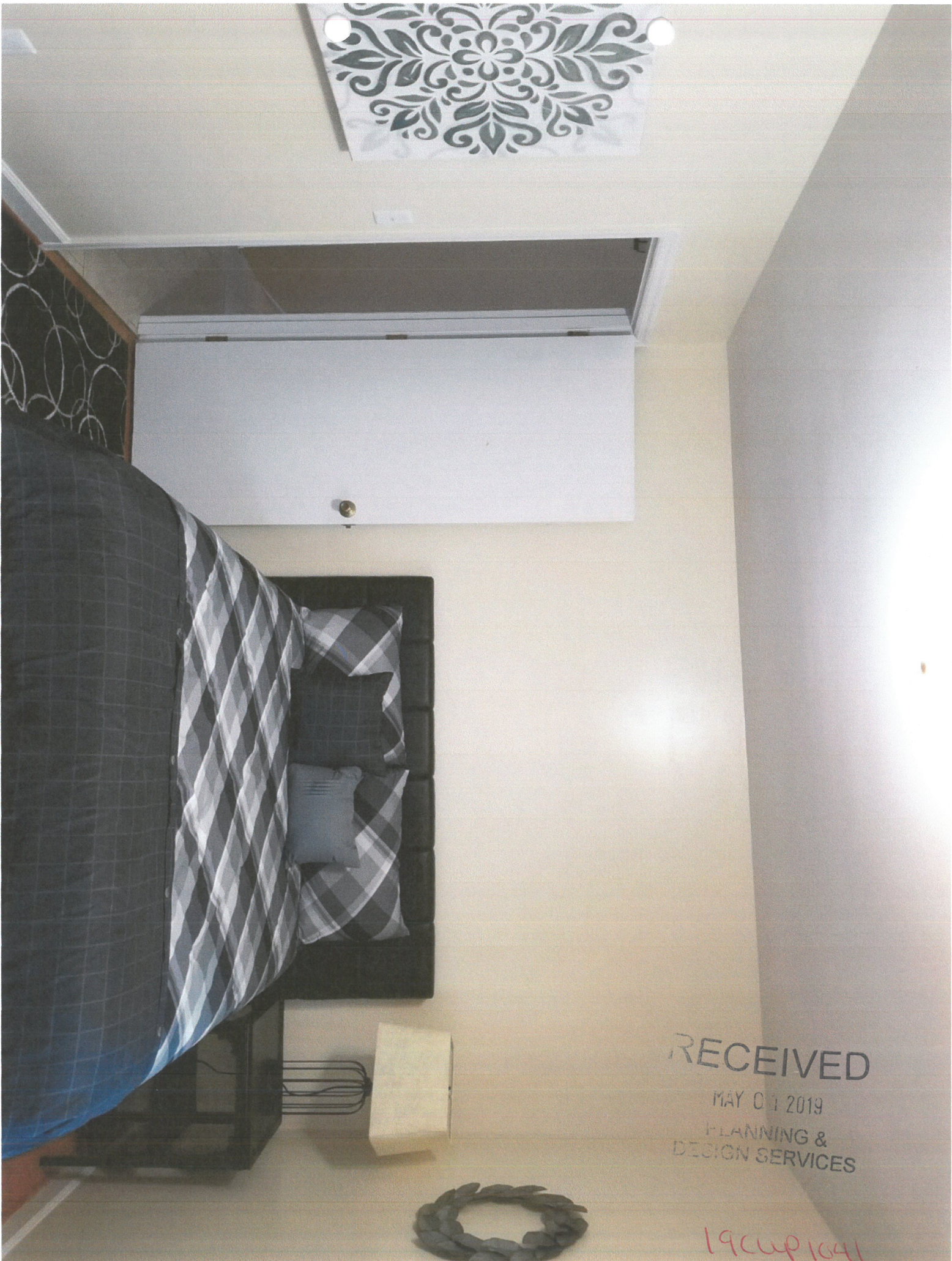
PLANNING &
DESIGN SERVICES

1906P1041



RECEIVED
MAY 07 2018
PLANNING &
DESIGN SERVICES

19061041



RECEIVED
MAY 01 2019
PLANNING &
DESIGN SERVICES

19041041

19cup044



RECEIVED
MAY 01 2019
PLANNING &
DESIGN SERVICES

19cup1c41





RECEIVED
MAY 07 2019
PLANNING &
DESIGN SERVICES

196691041



RECEIVED

MAY 07 2019

PLANNING &
DESIGN SERVICES

19061041



RECEIVED
MAY 01 2019
PLANNING &
DESIGN SERVICES

190481041



RECEIVED
MAY 04 2019
PLANNING &
DESIGN SERVICES

19CWP1041