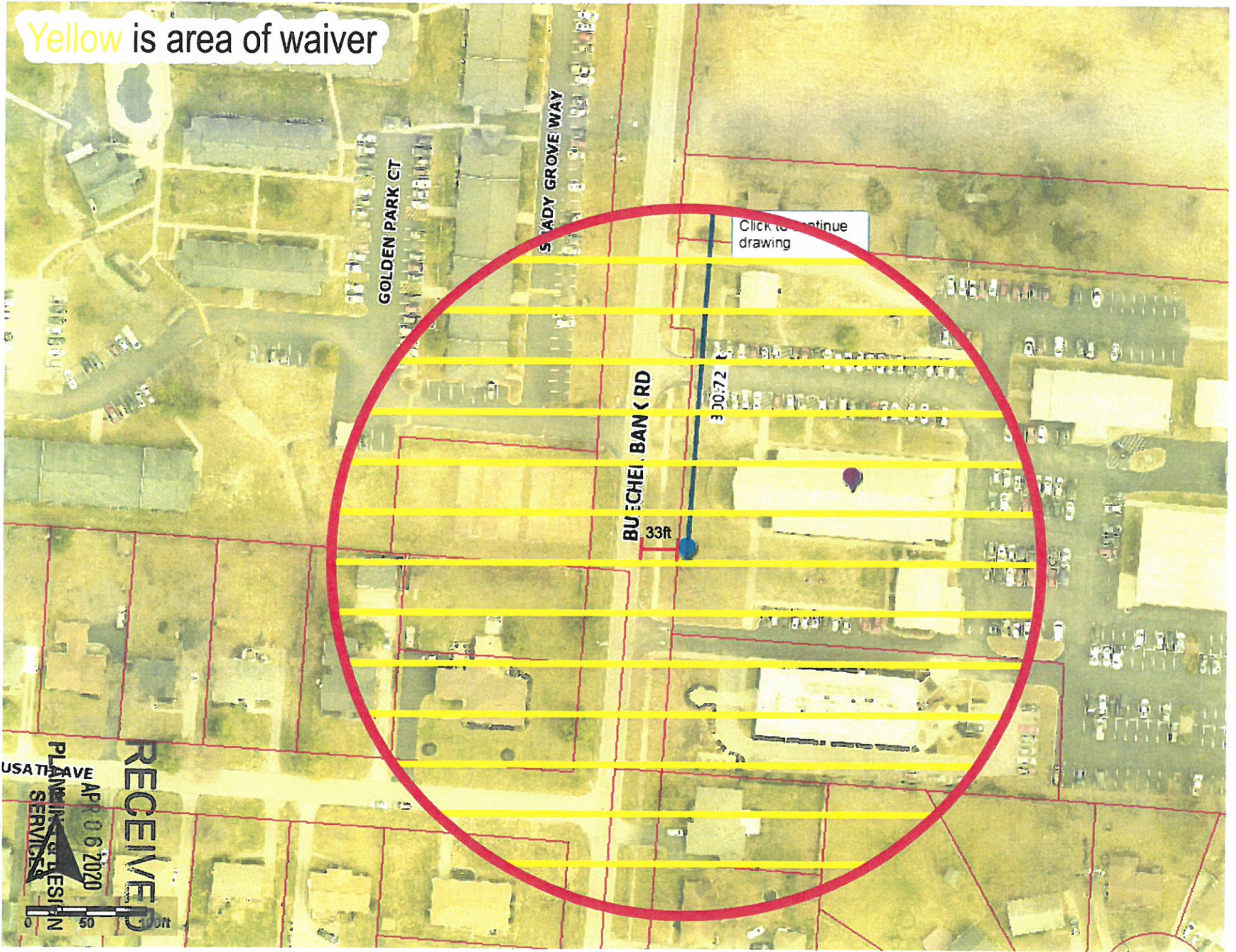


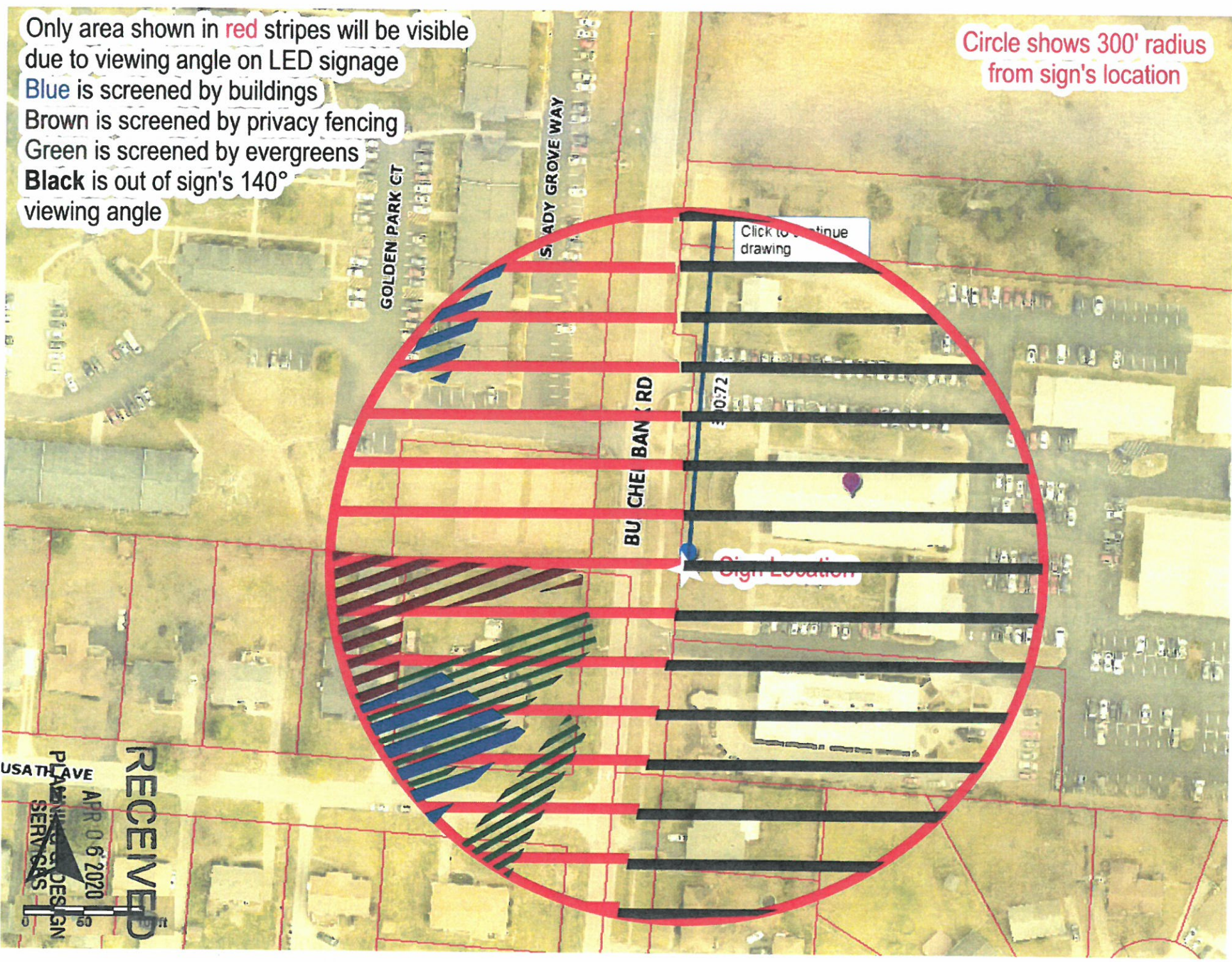
Yellow is area of waiver



20-waiver-006

Only area shown in red stripes will be visible due to viewing angle on LED signage
Blue is screened by buildings
Brown is screened by privacy fencing
Green is screened by evergreens
Black is out of sign's 140° viewing angle

Circle shows 300' radius from sign's location



Click to continue drawing

Sign Location

RECEIVED
APR 06 2020
PLANNING & DESIGN SERVICES
USATH AVE

20-walk-creek



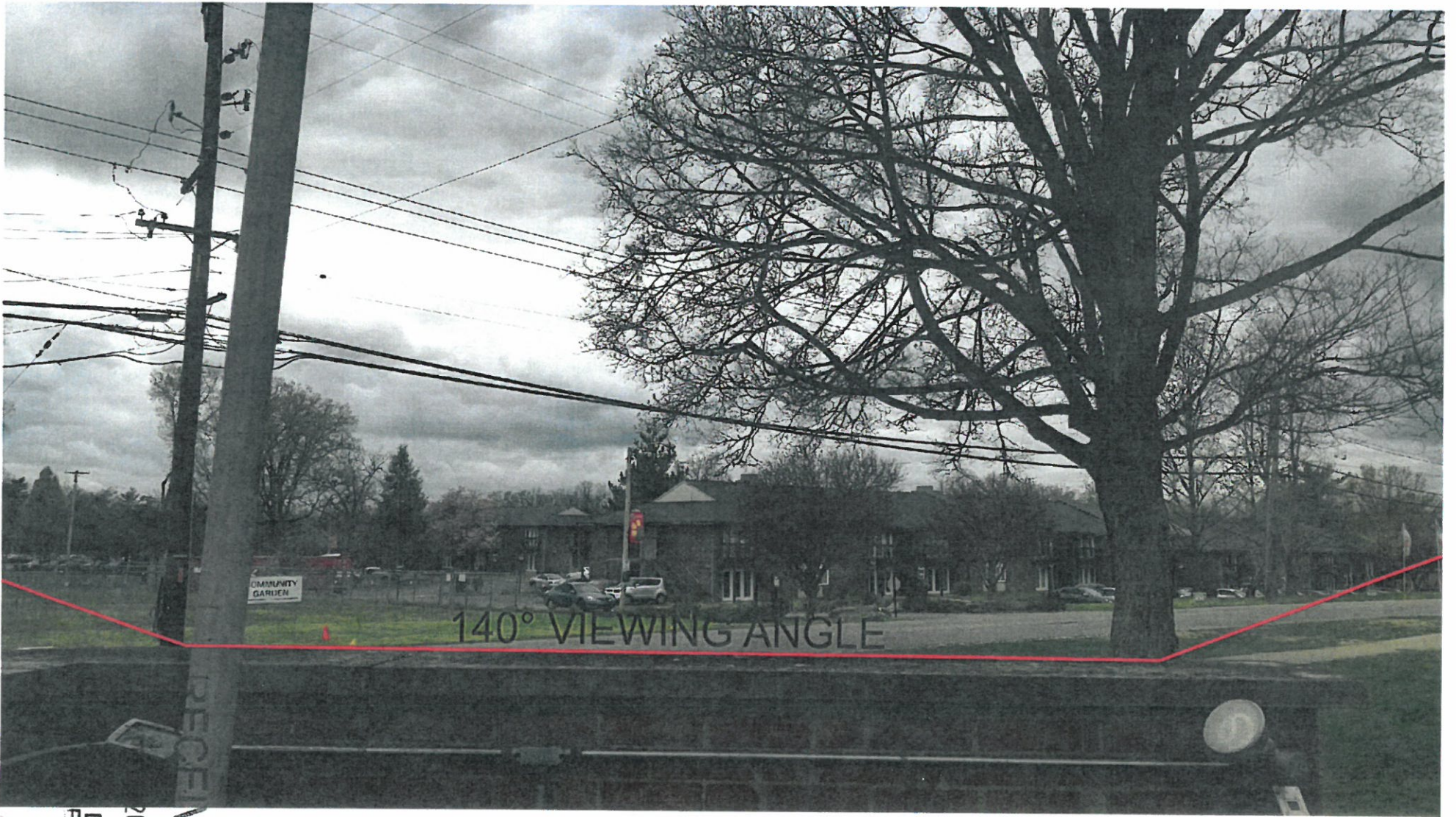
140° VIEWING ANGLE

VED

020

DESIGN
S

2010/08/23 1



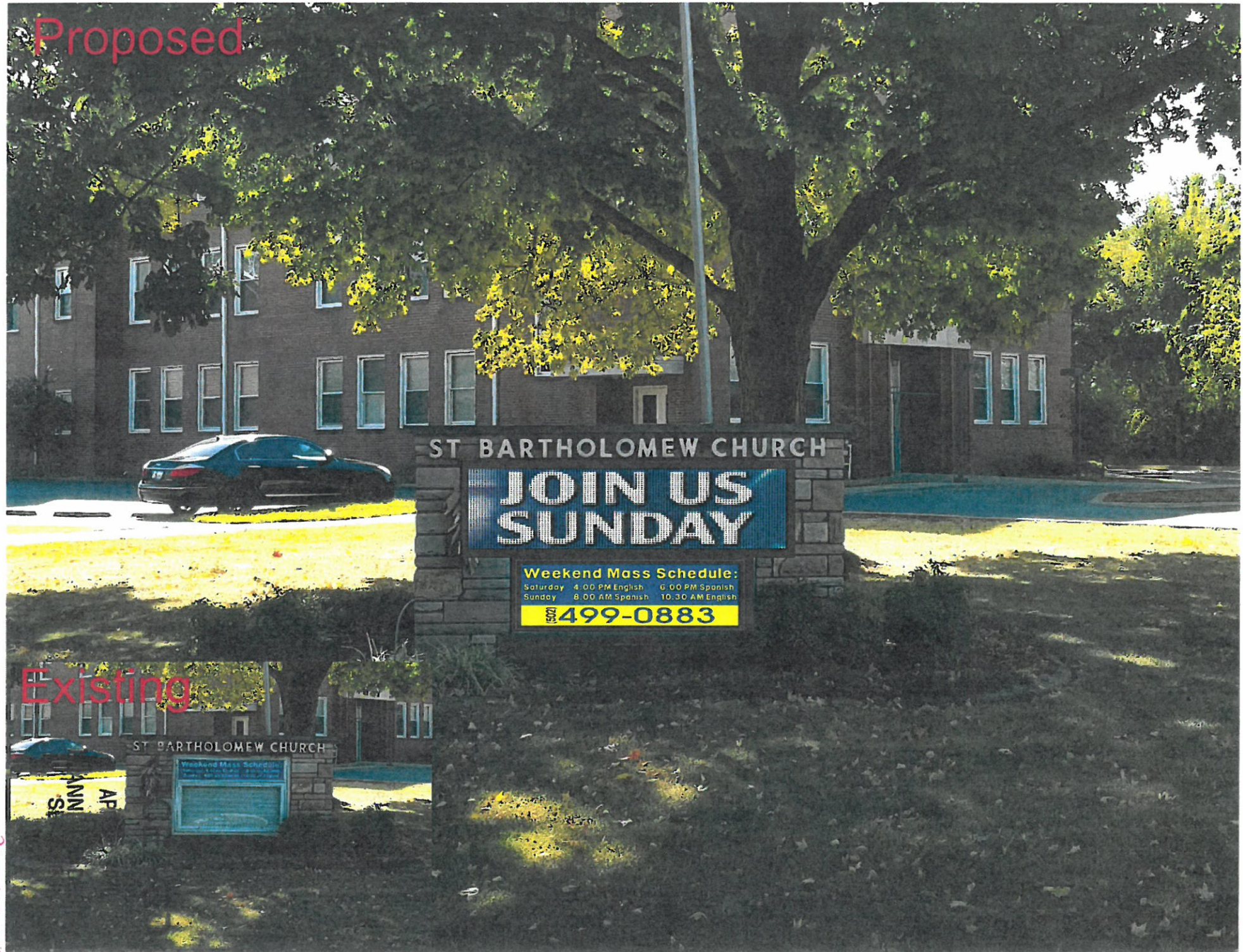
RECEIVER

2020

DESIGN

20.11.18-0038

Proposed



Existing



26 W. Main - 08/26

Total Square footage 49 sq ft.
LED is 12 sq ft
LED is 25% of total sign sq ft.

9.32 ft

ST BARTHOLOMEW CHURCH

83.18 in

20.79 in

JOIN US
SUNDAY

5.27 ft

Weekend Mass Schedule:

Saturday	4:00 PM English	6:00 PM Spanish
Sunday	8:00 AM Spanish	10:30 AM English

(502) 499-0883



9828 Research Dr.
Irvine, CA 92618, USA
T. (888) 860-2249
F. (949) 421-0350
www.hyocodistribution.com

04/03/2020

HYOCO Distribution, Inc.

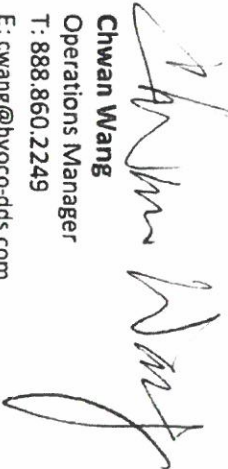
St. Bartholomew Church
2040 Buechel Bank Road
Louisville, KY 40218

To whom it may concern,

Hyoco's Electronic Message Centers comes with our proprietary software system. It enables the user to turn off the sign during any time of the day, such as the required 9pm to 7am EST. The software is also able to limit the Static Message Hold Time to 20 seconds before it changes the message.

Last but not least, all EMCs are equipped with auto dimming capability, to adjust the brightness according to the ambient light as required. The brightness output can be set at any level, such as within 0.3 foot candles of the ambient light.

Sincerely,



Chwan Wang
Operations Manager
T: 888.860.2249
E: cwang@hyoco-dds.com

RECEIVED

APR 06 2020

**PLANNING & DESIGN
SERVICES**

20-Workorder-4536

