

TACO TICO

OUTER LOOP LOUISVILLE



*IMAGE SHOWN FOR ILLUSTRATIVE PURPOSES ONLY. REFER TO DRAWINGS.

PROJECT GENERAL NOTES

1. DO NOT SCALE DRAWINGS. WRITTEN DIMENSIONS TAKE PRECEDENCE OVER SCALED DIMENSIONS. ANY DISCREPANCIES SHALL BE BROUGHT TO THE ATTENTION OF THE ARCHITECT.
2. THE TERM "FURNISH" MEANS TO SUPPLY AND DELIVER TO THE PROJECT SITE. "INSTALL" MEANS TO PLACE IN POSITION FOR SERVICE OR USE. "PROVIDE" MEANS TO FURNISH AND INSTALL.
3. NOTES INDICATED AS N.I.C. (NOT IN CONTRACT) ARE SHOWN FOR COORDINATION PURPOSES ONLY.
4. SEE STRUCTURAL DRAWINGS FOR TYPES, SIZE, LOCATION, CONNECTIONS, REINFORCEMENT AND OTHER REQUIREMENTS PERTAINING TO STRUCTURAL COMPONENTS INDICATED.
5. SEE STRUCTURAL DRAWINGS FOR LINTEL SCHEDULE. WHERE STEEL PLATES ARE A PART OF LINTELS, FACE OF LINTEL SHALL BE INSET 1/2" FROM FACE OF CMU. ALL RELEASING ANCHORS AND EXPOSED COMPONENTS OF STEEL LINTELS AND SUPPORTS IN EXTERIOR WALLS SHALL BE GALVANIZED. ALL EXPOSED PORTIONS OF LINTELS AND SUPPORTS SHALL BE PAINTED, TYP.
6. COLUMN LINES INDICATED ARE REFERENCE LINES ONLY AND MAY NOT INDICATE CENTER OF COLUMN. SEE ENLARGED PLANS, DETAILS AND STRUCTURAL DRAWINGS WHERE APPLICABLE.
7. PROVIDE ADDITIONAL HEADERS AS REQUIRED TO ACCOMMODATE ELECTRICAL, HVAC AND PLUMBING PENETRATIONS.
8. CONTACT BETWEEN DISSIMILAR METALS SHALL BE SEPARATED WITH BUTYL TAPE.
9. FIRESTOPPING SHALL BE INSTALLED AT PENETRATIONS THROUGH SLABS AS REQUIRED TO MAINTAIN INDICATED FIRE RATING. FIRESTOPPING IS NOT REQUIRED AT SLAB PENETRATIONS WHICH ARE ENCLOSED WITHIN RATED SHAFT CONSTRUCTION.
10. ALL PENETRATIONS IN FIRE RATED ASSEMBLIES SHALL BE FIRESTOPPED - USE THE MANUFACTURER'S LISTED ASSEMBLY FOR THE RATING OF THAT ASSEMBLY. RATED WALLS FILL VOIDS W/ FIRE SAFING AND PROVIDE BACKER ROD AND FIRE RATED SEALANT ON BOTH SIDES OF WALL.
11. ALL GYPSUM BOARD SHALL BE TYPE "X" AT FIRE RATED CONSTRUCTION OR AS NOTED.
12. MASONRY VENEER SHALL RETURN TO SHEATHING OR FRAMING AT WALL OPENINGS U.N.D.
13. REFER TO FOUNDATION PLAN AND ELEVATIONS FOR CONTROL JOINTS IN CONCRETE AND MASONRY.
14. BACKER ROD SHALL BE USED BEHIND ALL EXTERIOR SEALANT CONDITIONS (TYP.) WHERE SPECIFIC CONDITIONS DO NOT ALLOW BACKER ROD TO BE USED. A BOND BREAKER SHALL BE USED AT THE BACK OF THE JOINT.
15. PAINTED ACCESS PANELS SHALL BE PROVIDED AND INSTALLED WHERE REQUIRED TO MAINTAIN CONCEALED ELEC. SYSTEMS AND ACCESS POINTS WHETHER OR NOT INDICATED ON THESE DRAWINGS. LOCATIONS SHALL BE APPROVED BY ARCHITECT.
16. CORNER BEADS SHALL BE USED AT ALL GYPSUM BOARD OUTSIDE CORNERS. TYP. CASING BEADS SHALL BE USED AT ALL GYPSUM BOARD TERMINATIONS. TYP.
17. BATT INSULATION SHALL BE MECHANICALLY FASTENED TO WALLS.
18. PAINT ALL EXPOSED GAS PIPING TO PREVENT RUST - IF PIPING IS VISIBLE, ARCHITECT TO SELECT FINISH & COLOR.
19. FLOOR FINISHING TRANSITIONS HAPPEN AT DOOR THRESHOLDS U.N.D.
20. CONCEALED FRT WOOD BLOCKING SHALL BE PROVIDED AS REQUIRED BY MANUFACTURER OR INSTALLER OF WALL MOUNTED EQUIPMENT OR FURNISHINGS.
21. ALL WOOD BLOCKING, NAILERS AND PLYWOOD SHALL BE FIRE RESISTANT TREATED (FRT), EXCEPT AT CORNERS WHERE BLOCKING SHALL BE PRESSURE TREATED (PT).
22. ALL FRT WOOD FRAMING AND/OR BLOCKING IN CONTACT W/ CONCRETE AND/OR MASONRY SHALL ALSO BE PT.
23. SEPARATE PT WOOD FROM METALS W/ BUILDING FELT TAPE OR APPROVED METHOD. ANCHORS IN PT WOOD SHALL BE STAINLESS STEEL OR HOT-DIPPED GALVANIZED G-80.
24. THE LOCATION OF ALL HVAC, ELEC. & PLUMBING COMPONENTS (I.E. DUCTWORK, ELEC. SERVICE TUBS, TOILETS) SHALL BE COORDINATED PRIOR TO THE PLACEMENT OF CONC. SLABS, PLANKS & FLOOR JOISTS.
27. THE CONTRACTOR SHALL FIELD VERIFY (E) DIMENSIONS, ELEVATIONS AND ALL CONDITIONS RELATED TO IN WORK.
29. CONTRACTOR SHALL BE RESPONSIBLE FOR ALL PATCHING AND REPAIRS DUE TO DEMOLITION AND/OR REMOVAL OF ITEMS TO CREATE A FLUSH, SMOOTH SURFACE PROPERLY PREPARED TO RECEIVE (N) FINISHES AS SCHEDULED OR BREAK TO MATCH (E) ADJACENT AREAS WHERE REQUIRED.
30. IN AREAS OF DEMOLISHING OR REMOVAL, CAP/SEAL AND/OR RE-ROUTE EXISTING UTILITIES AS REQUIRED FOR COMPLETE, FUNCTIONING AND FINISHED PROJECT. CONTRACTOR TO COORDINATE UTILITY DEACTIVATION, SWITCH OVER AND ACTIVATION WITH OWNER / ARCHITECT PRIOR TO DEMOLITION.
31. THE CONTRACTOR SHALL BE RESPONSIBLE FOR ANY DAMAGE TO (E) ITEMS TO REMAIN CAUSED BY THE DEMOLITION, WORK OR WEATHER EXPOSURE. FIRE RATED ASSEMBLIES AND STRUCTURAL SYSTEMS TO REMAIN COMPLETE AND INTACT. PATCH/REPAIR/REPLACE IN AREAS OF WORK TO PROVIDE COMPLETE FINISHED SURFACES.
32. CONTRACTOR IS RESPONSIBLE FOR FINISHING / SCHEDULING OF WORK WITH EXISTING BUILDING AND SERVICES - COORDINATE W/ OWNER & ARCHITECT PRIOR TO CONSTRUCTION.
33. THE BUILDING OWNER IS RESPONSIBLE FOR IDENTIFYING WORK PLACE HAZARDS AND HAZARDOUS MATERIALS PRIOR TO CONSTRUCTION, RENOVATION, OR DEMOLITION. INTEGRITY / ARCHITECTURE ASSUMES NO LIABILITY, EXPRESSES OR IMPLIES NO OR ANY WARRANTY OR GUARANTEE, AS TO THE COMPLETENESS OF THE OWNERS OR ITS CONSULTANTS DUE DILIGENCE TO IDENTIFY WORK PLACE HAZARDS OR HAZARDOUS MATERIALS THAT MAY BE ENCOUNTERED DURING THE CONTRACTORS SCOPE OF WORK.
34. DETAILS SHOWN ARE TYPICAL. SIMILAR DETAILS APPLY IN SIMILAR CONDITIONS. IF CONDITIONS ARISE THAT ARE NOT COVERED BY A TYPICAL DETAIL, THE CONTRACTOR SHALL CONTACT THE ARCHITECT FOR CLARIFICATION BEFORE PROCEEDING.
35. PROVIDE MECHANICAL, PLUMBING, ELECTRICAL (INCLUDING EXIT SIGNS AND EMERGENCY LIGHTING) AND FIRE PROTECTION ITEMS FOR EACH ROOMSPACE AS REQUIRED PER CODE AND OWNER REQUIREMENTS.

integrity
Architecture
2414 Palumbo Drive, Suite 125
Lexington, KY 40509
PH: 859.268.9712
www.integrityarch.com
ECP190817.001

COVER SHEET &
PROJECT NOTES

SHEET NAME

PROJECT NAME

TACO TICO

PROJECT NO. 1933

DATE 11.17.21

REVISIONS

#	Description	Date

SHEET NUMBER

A0.0

VICINITY MAP

PROJECT TEAM

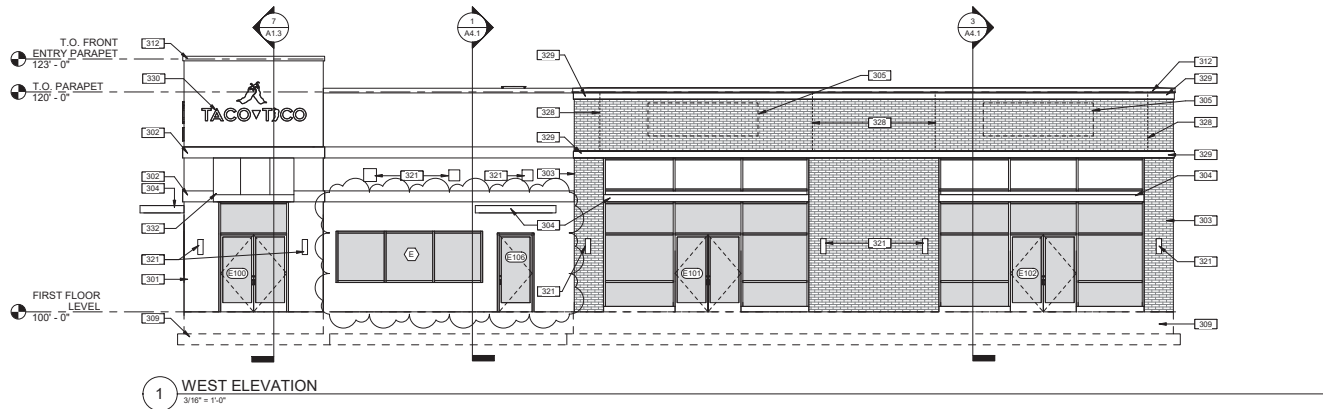
DRAWING INDEX

DRAWING INDEX

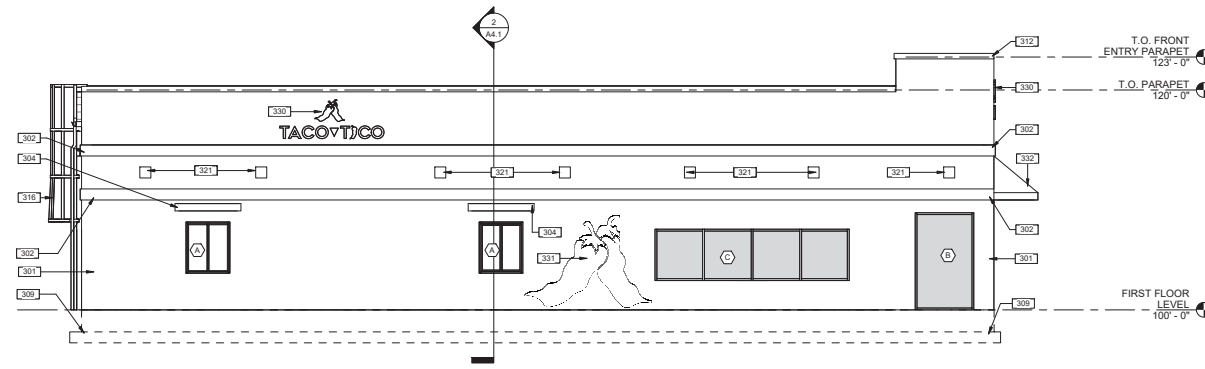


ARCHITECT integrity / Architecture, PLLC 2414 Palumbo Drive, Suite 125 Lexington, KY 40509 (859) 368-9712	MPE Shrout Tate Wilson 628 Winchester Rd Lexington, KY 40505 (859) 277-8177
CIVIL ENGINEER Vision Engineering 128 E. Reynolds Road, Suite 150 Lexington, KY 40517 (859) 333-8015	
STRUCTURAL ENGINEER Poage Engineers & Associates 880 Sparta Court Lexington, KY 40504 (859) 255-9034	

CIVIL	MECHANICAL
C1.0 B.M.P. PLAN	M0.1 MECHANICAL LEGEND & GENERAL NOTES
C2.0 SITE SURVEY	M1.1 FLOOR PLAN - MECHANICAL
C3.0 DEMOLITION PLAN	M1.2 ROOF PLAN - MECHANICAL
C4.0 STAKING PLAN	M6.1 MECHANICAL DETAILS
C5.0 GRADING PLAN	M6.1 MECHANICAL SCHEDULES
C5.1 DETAILS SPOT ELEVATIONS	
C6.0 UTILITIES PLAN	ELECTRICAL
C6.1 DETAILED UTILITIES PLAN	E0.1 ELECTRICAL LEGEND
C7.0 LANDSCAPE PLAN	E0.2 ELECTRICAL GENERAL NOTES
C8.0 DETAILS EROSION CONTROL	E1.1 FLOOR PLAN - LIGHTING
C8.0 DETAILS SITE	E2.1 FLOOR PLAN - POWER
C10.0 DETAILS SAN. SEWER	E2.2 ROOF PLAN - POWER
C10.1 DETAILS SAN. SEWER	E3.1 FLOOR PLAN - SYSTEMS
C10.2 DETAILS SAN. SEWER	E3.2 ROOF PLAN - SYSTEMS
C11.0 DETAILS WATER	E5.1 ELECTRICAL DETAILS
C12.0 DETAILS STORM SEWER	E5.2 ELECTRICAL DETAILS & POWER ONE-LINE DIAGRAM
SITE UTILITY	E6.1 ELECTRICAL SCHEDULES
SU1.1 SITE PLAN ELECTRICAL	
STRUCTURAL	
S0.0 STRUCTURAL NOTES	
S0.1 STRUCTURAL NOTES	
S1.1 FOUNDATION PLAN	
S2.1 ROOF FRAMING PLAN	
S3.1 SECTIONS & DETAILS	
S4.1 SECTIONS & DETAILS	
S5.1 SECTIONS	
ARCHITECTURAL	
A0.0 COVER SHEET & PROJECT NOTES	
A0.1 CODE COMPLIANCE PLANS & DATA	
A0.3 ABBREVIATIONS, WALL TYPES & NOTES	
A1.1 FLOOR PLAN	
A1.2 ROOF PLAN & DETAILS	
A1.3 DETAILS	
A1.4 DETAILS	
A2.1 KITCHEN EQUIPMENT PLAN	
A2.2 ENLARGED RESTROOM PLANS AND ELEVATIONS	
A3.1 BUILDING ELEVATIONS	



1 WEST ELEVATION
3/16" = 1'-0"



2 NORTH ELEVATION
3/16" = 1'-0"

ELEVATION GENERAL NOTES

- A VERTICAL DIMENSIONS SHOWN ON BUILDING ELEVATIONS APPLY TO OTHER ELEVATIONS WHERE SHOWN U.N.O.
- B LINES REPRESENTING PAVING AND FINISH GRADES ARE SHOWN FOR REFERENCE PURPOSES ONLY. REFER TO SITE PLANS FOR SPECIFIC GRADE AND SPOT ELEVATIONS.
- C REFER TO FLOOR PLANS FOR LOCATIONS OF OPENINGS. REFER TO DOOR, WINDOW AND FRAME SCHEDULES FOR FULL EXTENT OF AND COMPLETE DESCRIPTION OF DOOR, WINDOW AND FRAME TYPES. PORTIONS OF DOORS, WINDOWS, STOREFRONTS, AND CURTAIN WALLS MAY BE CONCEALED BY OTHER BUILDING FEATURES SHOWN.
- D MASONRY & DOOR / WINDOW CONTRACTORS SHALL COORDINATE OPENING SIZES AS SHOWN. PROVIDE DIMENSIONS ON SHOP DRAWINGS FOR VERIFICATION.
- E EXPOSED EXTERIOR SHEET METAL COPINGS AND TRIM SHALL BE PREFINISHED GALV. SHEET METAL U.N.O.
- F EXPOSED SEALANT IN MASONRY & MASONRY JOINTS SHALL MATCH THE COLOR OF ADJACENT MASONRY. PROVIDE SEALANT IN LIEU OF MORTAR AT MASONRY LINTEL BEARING LOCATIONS WHERE MASONRY JOINT DEPTH IS LESS THAN 1".
- G EXPOSED EXTERIOR MASONRY SHALL RECEIVE WATER REPELLENT - SEE SPECIFICATIONS.
- H CONTRACTORS (INCL. MASONRY, STONE & SIDING) SHALL COORDINATE LOCATIONS OF EXTERIOR ELECTRICAL OUTLETS, LIGHT FIXTURES, DOOR OPERATORS, HOSE BIBS, ETC. WHERE REQUIRED SUCH ITEMS SHALL BE CAST IN OR BE RESPONSIBLE TRADE. NOT ALL SUCH ITEMS MAY BE SHOWN ON ELEVATIONS.
- I PROVIDE EXPANSION JOINTS AT BUILDING CORNERS U.N.O. ON BUILDING ELEVATIONS. PROVIDE MASONRY EXPANSION JOINTS AT INTERIOR BUILDING CORNERS, ADJACENT TO EXTERIOR BUILDING CORNERS (MAX. 4' PER JOINT) AND AT EVERY 25'-0" U.N.O. ON BUILDING ELEVATIONS.
- J ARCHITECT TO SELECT EXTERIOR FINISHES AND COLORS. PHYSICAL SAMPLES OF EXTERIOR FINISHES SHALL BE SUBMITTED SIMULTANEOUSLY TO COMPARE AND REVIEW ALL FINISHES TOGETHER U.N.O.
- K SEE FLOOR PLAN, SECTIONS, DETAILS & WALL TYPES FOR ADDITIONAL FINISHING INFORMATION. SEE ROOF PLAN & DETAILS FOR ADDITIONAL ROOFING AND DRAINAGE INFORMATION. SEE WALL SECTIONS & STRUCTURAL FOR BEARING HEIGHTS.
- L MPE ITEMS SHOWN FOR REFERENCE ONLY - SEE MPE DRAWINGS FOR MORE INFORMATION.

ELEVATION KEYNOTES

- 301 EXTERIOR INSULATION FINISHING SYSTEM (EIFS) - SEE WALL TYPES & SECTIONS
- 302 EIFS ACCENT BAND - SEE WALL SECTIONS, DOOR / WINDOW DETAILS
- 303 RUNNING BOND FACE BRICK VENEER. SEE WALL TYPES AND SECTIONS.
- 304 PRE-ENGINEERED CANTILEVER ALUMINUM CANOPY W/ INTEGRAL GUTTERS, SOFFIT PANELS. CONNECTIONS BY MANUF. 2"x2" DOWNSPOUTS CONNECTED TO GUTTERS. PROVIDE CONNECTION TO STORM PAGES CANOPY SUPER LUMIDECK FLAT. SOFFIT BASIS OF DESIGN - SEE WALL SECTIONS & DETAILS. SEE STRUCT. FOR CONNECTION. DESIGN BY MANUFACTURER. SHOW FOR COORDINATION PURPOSES ONLY. USE HOLLOW BOLT OR EQUIVALENT @ BLIND CONNECTIONS. TYP.
- 305 DASHED OUTLINE INDICATES AREA OF WALL MOUNTED SIGNAGE (SIGNAGE N.I.C. BY TENANT). PROVIDE FT. FRST BLOCKING BEHIND SIGNAGE AREA FOR SUPPORT AS REQ'D. COORDINATE W/ OWNER PRIOR TO INSTALLATION OF ELECTRICAL. SEE ELECTRICAL FOR MORE INFO.
- 309 FOUNDATION SHOWN DASHED BEYOND
- 312 PREFINISHED METAL COPING ARCHITECT TO SELECT COLOR. SEE ROOF PLAN, DETAILS AND WALL SECTIONS.
- 316 ROOF ACCESS LADDER - SEE ROOF PLAN.
- 321 WALL MOUNTED LIGHT - SEE ELECTRICAL FOR FIXTURE INFO & MOUNTING HEIGHT. PROVIDE FRST BLOCKING FOR SUPPORT AS REQUIRED.
- 328 MASONRY EXPANSION JOINT - OMT MORTAR AND HORIZ. REINFORCING. FILL WITH 50% COMPOSITE FOAM GULK. AT STONE BANDS AND TRIM. USE FLUSH 3/8" VERTICAL EXPANSION JOINTS W/ SQUARE EDGE AND SEALANT FLUSH WITH FRONT OF STONE. USE CONC. 3/8" VERTICAL EXPANSION JOINTS WHERE PORTIONS OF SUCH JOINTS FORM A VISIBLE PART OF THE STONE JOINT PATTERN. JOINT LOCATIONS MUST BE APPROVED BY ARCHITECT.
- 329 CALCIUM SILICATE ACCENT BAND - SEE WALL SECTIONS, DOOR/WINDOW DETAILS.
- 330 ILLUMINATED DIMENSIONAL LOGO SIGNAGE ON STANDOFFS - PROVIDE BLOCKING BEHIND SIGNAGE AREA FOR SUPPORT AS REQUIRED. SEE ELECTRICAL FOR POWER PROVISIONS. COLOR/FINISHES/TYPFACE TO BE SELECTED BY OWNER.
- 331 OFG PEPPER STENCIL/DECAL. COORDINATE TYPE AND FINAL PLACEMENT WITH OWNER.
- 332 PRE-FABRICATED, PRE-FINISHED ALUMINUM AWNING COLOR TO BE SELECTED BY OWNER. SEE ROOF PLAN & DETAILS.

integrity Architecture
2414 Palumbo Drive, Suite 125
Lexington, KY 40509
ph: 859.268.9712
www.integrityarch.com
ECOPROJECT 2021

BUILDING ELEVATIONS

TACO TICO

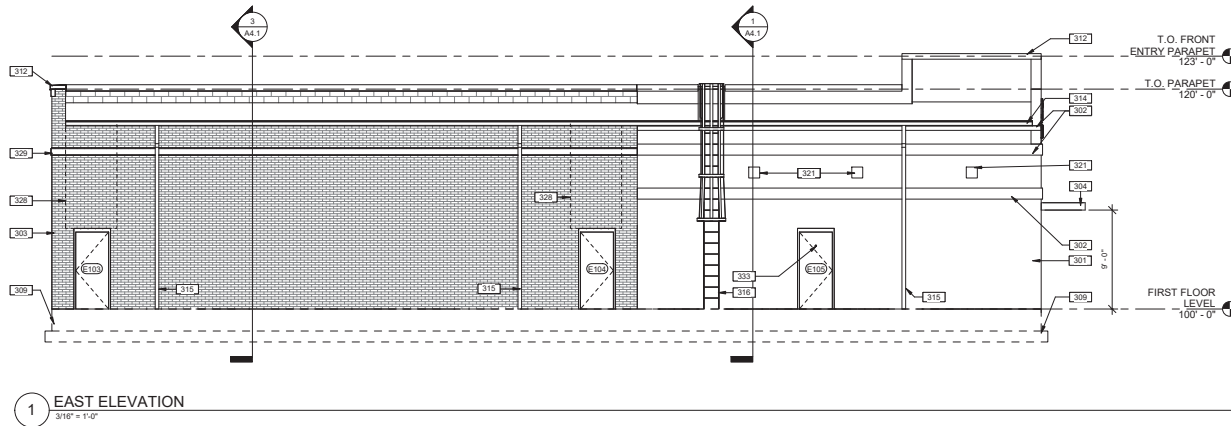
PROJECT NO. 1933
DATE 11.17.21

REVISIONS

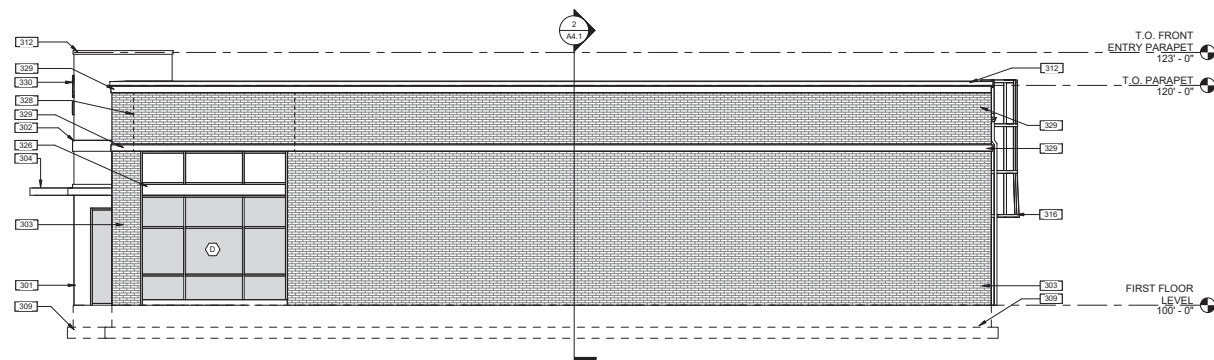
#	Description	Date
1	Revision 1	06.11

SHEET NUMBER

A3.1



1 EAST ELEVATION
3/16" = 1'-0"



2 SOUTH ELEVATION
3/16" = 1'-0"

ELEVATION GENERAL NOTES

- A VERTICAL DIMENSIONS SHOWN ON BUILDING ELEVATIONS APPLY TO OTHER ELEVATIONS WHERE SHOWN U.N.O.
- B LINES REPRESENTING PAVING AND FINISH GRADES ARE SHOWN FOR REFERENCE PURPOSES ONLY. REFER TO SITE PLANS FOR SPECIFIC GRADE AND SPOT ELEVATIONS.
- C REFER TO FLOOR PLANS FOR LOCATIONS OF OPENINGS. REFER TO DOOR, WINDOW AND FRAME SCHEDULES FOR FULL EXTENT OF AND COMPLETE DESCRIPTION OF DOOR, WINDOW AND FRAME TYPES. PORTION OF DOORS, WINDOWS, STOREFRONTS, AND CURTAIN WALLS MAY BE CONCEALED BY OTHER BUILDING FEATURES SHOWN.
- D MASONRY & DOOR / WINDOW CONTRACTORS SHALL COORDINATE OPENING SIZES AS SHOWN. PROVIDE DIMENSIONS ON SHOP DRAWINGS FOR VERIFICATION.
- E EXPOSED EXTERIOR SHEET METAL COPINGS AND TRIM SHALL BE PREFINISHED GALV. SHEET METAL U.N.O.
- F EXPOSED SEALANT IN MASONRY & MASONRY JOINTS SHALL MATCH THE COLOR OF ADJACENT MASONRY. PROVIDE SEALANT IN LIEU OF MORTAR AT MASONRY LINTEL BEARING LOCATIONS WHERE MASONRY JOINT DEPTH IS LESS THAN 1".
- G EXPOSED EXTERIOR MASONRY SHALL RECEIVE WATER REPELLENT - SEE SPECIFICATIONS.
- H CONTRACTORS (INGL. MASONRY, STONE & SIDING) SHALL COORDINATE LOCATIONS OF EXTERIOR ELECTRICAL OUTLETS, LIGHT FIXTURES, DOOR OPERATORS, HOSE BIBS, ETC. WHERE REQUIRED. SUCH ITEMS SHALL BE CAST IN OR PLACED BY RESPONSIBLE TRADE. NOT ALL SUCH ITEMS MAY BE SHOWN ON ELEVATIONS.
- I PROVIDE EXPANSION JOINTS AT BUILDING CORNERS U.N.O. ON BUILDING ELEVATIONS. PROVIDE MASONRY EXPANSION JOINTS AT INTERIOR BUILDING CORNERS, ADJACENT TO EXTERIOR BUILDING CORNERS (MAX. 4" FROM CORNER) AND AT EVERY 20'-0" U.N.O. ON BUILDING ELEVATIONS.
- J ARCHITECT TO SELECT EXTERIOR FINISHES AND COLORS. PHYSICAL SAMPLES OF EXTERIOR FINISHES SHALL BE SUBMITTED SIMULTANEOUSLY TO COMPARE AND REVIEW ALL FINISHES TOGETHER U.N.O.
- K SEE FLOOR PLAN, SECTIONS, DETAILS & WALL TYPES FOR ADDITIONAL MATERIAL INFORMATION. SEE ROOF PLAN & DETAILS FOR ADDITIONAL ROOFING AND ROOF DRAINAGE INFORMATION. SEE WALL SECTIONS & STRUCTURAL FOR BEARING HEIGHTS.
- L MPE ITEMS SHOWN FOR REFERENCE ONLY - SEE MPE DRAWINGS FOR MORE INFORMATION.

ELEVATION KEYNOTES

- 301 EXTERIOR INSULATION AND FINISHING SYSTEM (EIFS) - SEE WALL TYPES & SECTIONS.
- 302 EIFS ACCENT BAND - SEE WALL SECTIONS, DOOR / WINDOW DETAILS.
- 303 RUNNING BOND FACE BRICK VENEER. SEE WALL TYPES AND SECTIONS.
- 304 PRE-ENGINEERED CANTILEVER ALUMINUM CANOPY W/ INTEGRAL GUTTERS, SOFFIT PANELS. CONNECTIONS BY MANUF. 2"x2" DOWNSPOUTS CONNECTED TO GUTTER. PROVIDE CONNECTION TO STORM WAPES CANOPY SUPER LUMIDECK FLAT SOFFIT BASIS OF DESIGN. - SEE WALL SECTIONS & DETAILS. SEE STRUCT. FOR CONNECTION. DESIGN BY MANUFACTURER. SHOWN FOR COORDINATION PURPOSES ONLY. USE HOLLOW BOLT OR EQUIVALENT @ BLIND CONNECTIONS. TYP.
- 309 FOUNDATION SHOWN DASHED BEYOND.
- 312 PREFINISHED METAL COPING ARCHITECT TO SELECT COLOR. SEE ROOF PLAN, DETAILS AND WALL SECTIONS.
- 314 GUTTER (ARCHITECT TO SELECT COLOR) - SEE ROOF PLAN.
- 315 DOWNSPOUT (DS), ARCHITECT TO SELECT COLOR. - SEE ROOF PLAN. PROVIDE CAST IRON DS BOOT. PAINT TO MATCH DS & CONNECT TO SUBSURFACE DRAINAGE. - SEE CIVIL FOR CONTINUATION.
- 316 ROOF ACCESS LADDER - SEE ROOF PLAN.
- 321 WALL MOUNTED LIGHT - SEE ELECTRICAL FOR FIXTURE INFO & MOUNTING HEIGHT. PROVIDE FRIT BLOCKING FOR SUPPORT AS REQUIRED.
- 326 INSULATED METAL SPANDREL PANEL - SEE DOOR/WINDOW ELEVATIONS.
- 328 MASONRY EXPANSION JOINT - OMIT MORTAR AND HORIZ. REINFORCING. FILL WITH 100% COMPOSITE FOAM CAULK. AT STONE BANDS AND TRIM. USE FLUSH 3/8" VERTICAL EXPANSION JOINTS W/ SQUARE EDGE AND SEALANT FLUSH WITH FRONT OF STONE. USE CONCAVE 3/8" VERTICAL EXPANSION JOINTS WHERE PORTIONS OF SUCH JOINTS FORM A VISIBLE PART OF THE STONE JOINT PATTERN. JOINT LOCATIONS MUST BE APPROVED BY ARCHITECT.
- 329 CALCIUM SILICATE ACCENT BAND - SEE WALL SECTIONS, DOOR/WINDOW DETAILS.
- 330 ILLUMINATED DIMENSIONAL LOGO SIGNAGE ON STANDOFFS - PROVIDE BLOCKING BEHIND SIGNAGE AREA FOR SUPPORT AS REQUIRED. SEE ELECTRICAL FOR POWER PROVISIONS. COLOR/FINISH/TYPFACE TO BE SELECTED BY OWNER.
- 333 PEEP HOLE. SEE DOOR HARDWARE SPEC.

integrity Architecture
2414 Palumbo Drive, Suite 125
Lexington, KY 40509
ph: 859.268.9712
www.integrityarch.com
© COPYRIGHT 2021

BUILDING ELEVATIONS

PROJECT NAME
TACO TICO

SHEET NUMBER
A3.2

PROJECT NO. 1933
DATE 11.17.21
REVISIONS
Description Date