

## ZONING DESCRIPTION

Being a certain tract of land in Louisville, Jefferson County, Kentucky, bounded on the North by Interstate 64, on the East by Tucker Station Road and on the South by Sycamore Station Place and being more particularly described as follows:

Beginning at a point located at the Northwest intersection of Tucker Station Road and Sycamore Station Place; thence leaving said Tucker Station Road and running with the North right of way line of said Sycamore Station Place, S 60°11'52" W, 107.89 feet to a point; thence with a curve to the left, having a radius of 630.00 feet, a chord bearing of S 55°15'30" W and a chord distance of 108.49 feet to a point; thence with a curve turning to the right having a radius of 740.00 feet, a chord bearing of S 58°59'45" W and a chord distance of 223.28 feet to a point; thence S 67°40'22" W, 240.43 feet to a point; thence with a curve to the left, having a radius of 210.00 feet, a chord bearing of S 22°40'33" W and a chord distance of 296.97 feet to a point; thence S 22°19'17" E, 0.75 feet to a point, said point being the Northeast corner of a tract of land conveyed to Citicorp of record in Deed Book 8607, Page 551 on file in the office of the County Clerk of Jefferson County, Kentucky; thence leaving said Sycamore Station Place and running with said Citicorp, S 67°29'13" W, 420.55 feet to a point, said point being a common corner to said Citicorp; thence with another line of said Citicorp and a tract of land conveyed to Sam's Club of record in Deed Book 7481, Page 611 on file in said Clerk's office, N 22°19'47" W, 1025.30 feet to a point, said point being the Northeast corner of said Sam's Club tract and also being in the Southern right of way line of Interstate 64; thence leaving said Sam's Club tract and running with said Interstate 64, N 87°06'23" E, 1294.12 feet to a point, said point being the Southwest intersection of said Interstate 64 right of way and the West right of way of said Tucker Station Road; thence leaving said Interstate 64 and with said Tucker Station Road right of way, S 39°34'04" E, 267.42 feet to a point; thence S 27°26'27" E, 56.41 feet to the point of beginning. Containing 19.157 acres or 834,477 square feet.

Being the same property conveyed to Pinnacle Partners/TSF Properties by deed dated May 19, 2006 of record in Deed Book 8836, Page 13 and a portion of the same property conveyed to Pinnacle Partners/TSF Properties by deed dated August 15, 2000 of record in Deed Book 7498, Page 25 all on file in the office of the County Clerk of Jefferson County, Kentucky..

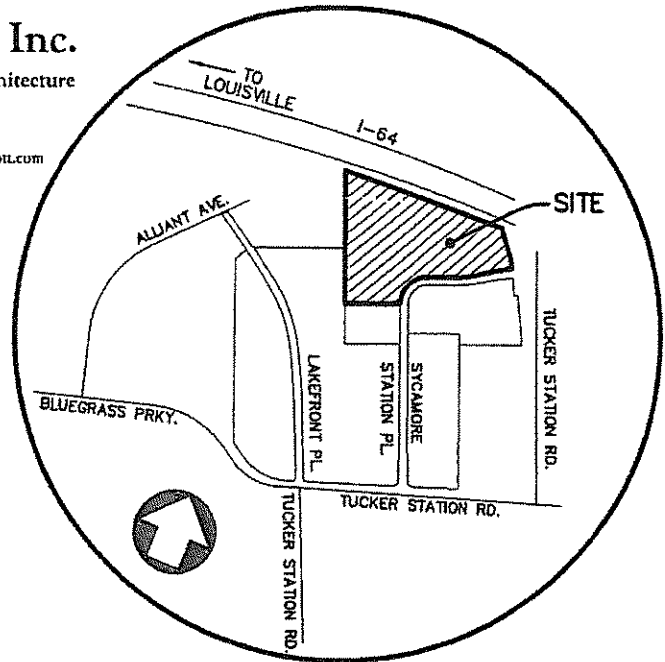


# Mindel, Scott & Associates, Inc.

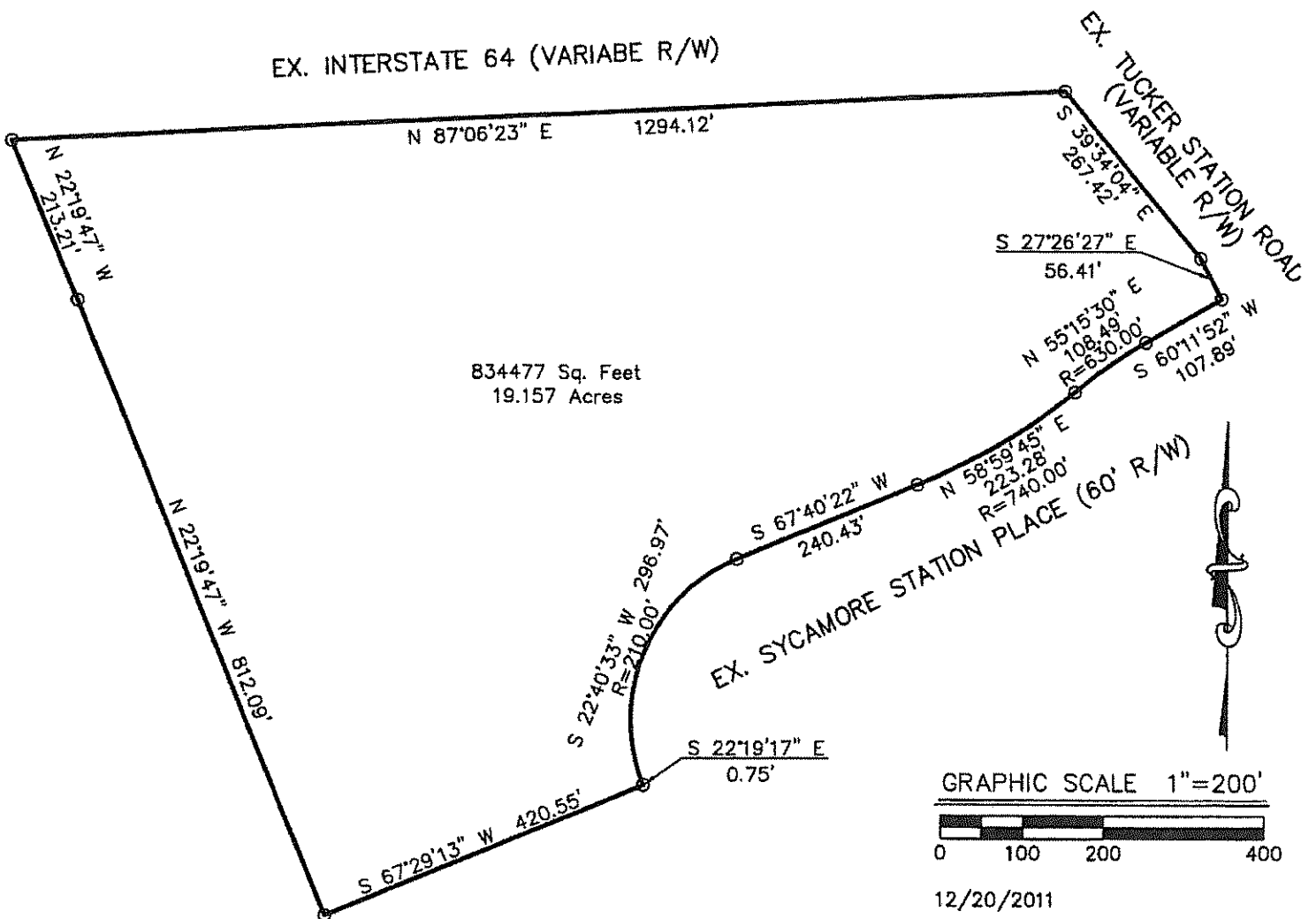
Planning · Engineering · Surveying · Landscape Architecture  
Utility Consulting · Property Management

5151 Jefferson Boulevard, Louisville, KY 40219  
Phone: (502) 485-1508 · Fax: (502) 485-1606 · E-Mail: msa@mindelscott.com

## ZONING EXHIBIT



LOCATION MAP  
NO SCALE



12/20/2011

JOB#2282-910-ZONING-EX.

[F:\SURVEYS\EXHIBIT\2282-910-Zoning-Exhibit.dwg