

2919 BARDSTOWN ROAD

ALLEY CLOSURE

February 28th, 2019

Land Development & Transportation Committee

CASE# 18STREETS1030



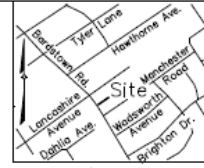
LAND DESIGN & DEVELOPMENT INC

503 Washburn Avenue, Suite 101, Louisville, KY 40222 | p: (502) 426-9374

Alley Closure Plat

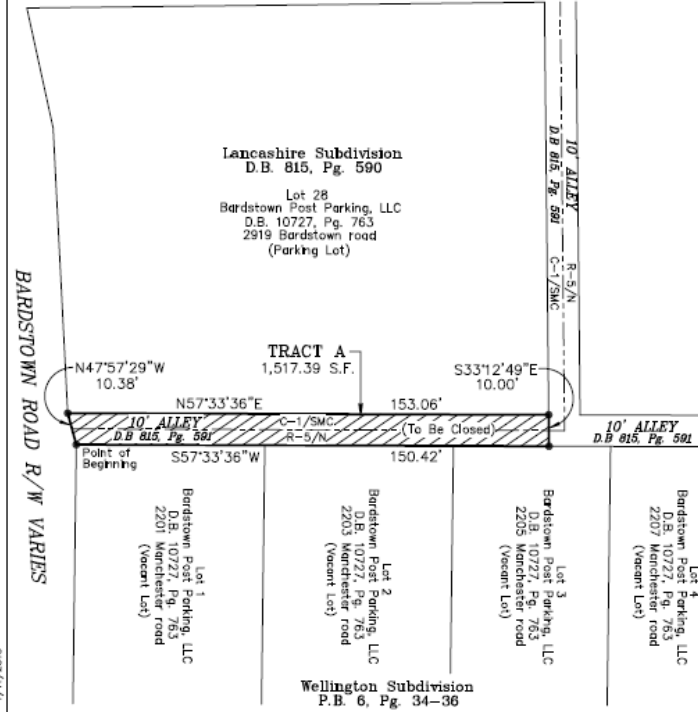


NOTE:
All of the area closed by this Right-of-Way Closure Plat shall be added to Lot 28, Lancashire Subdivision, and the intended use is a parking lot.



LANCASHIRE AVENUE 50'R/W

LOCATION MAP
Not To Scale



G:\Client\Projects\161565\DWG\SURVEY\161565\161565closure.dwg 1/11/2019

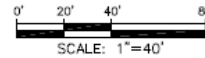
AREA TO BE CLOSED = 1,517.39 SQ. FT.

The reference meridian used on this plat to determine the directions of the survey lines were based on the Kentucky State Plane Coordinate System, North Zone 1601, NAD 1983.



LAND SURVEYOR'S CERTIFICATE
I hereby certify that this plat and survey were made under my supervision, and that the property lines shown hereon were obtained from recorded deeds or plats, and that only the property corners noted as monumented were located in the field.

Surveyor's Signature PLS# Date



LD&D
LAND DESIGN & DEVELOPMENT, INC.
ENGINEERING • LAND SURVEYING • LANDSCAPE ARCHITECTURE
506 N. BURNETT AVE., SUITE 101, LOUISVILLE, KY 40203
PHONE: 502-436-0001 FAX: 502-436-0001

**RIGHT-OF-WAY
CLOSURE PLAT**

For:
BARDSTOWN POST PARKING LLC
2170 TYLER LANE
LOUISVILLE, KY 40205-2950
PLAT DATE: JANUARY 11, 2019

Aerial



Aerial



Site Pics



Site Pics



Site Pics

