

18Waiver1046
2919 Bardstown Road



Louisville Metro Development Review Committee
Public Hearing

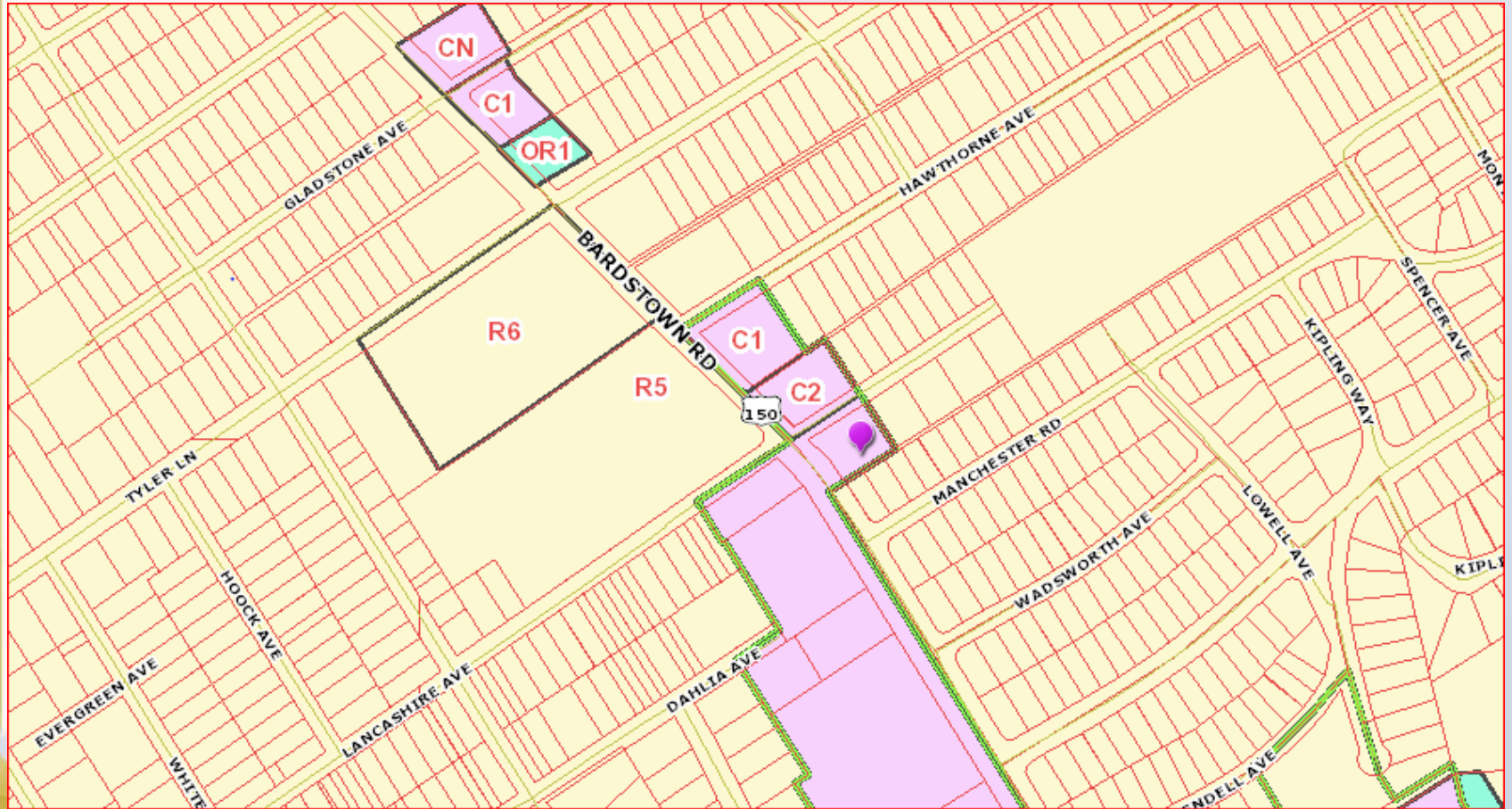
Steve Hendrix, Planning Coordinator
March 20, 2019

Requests

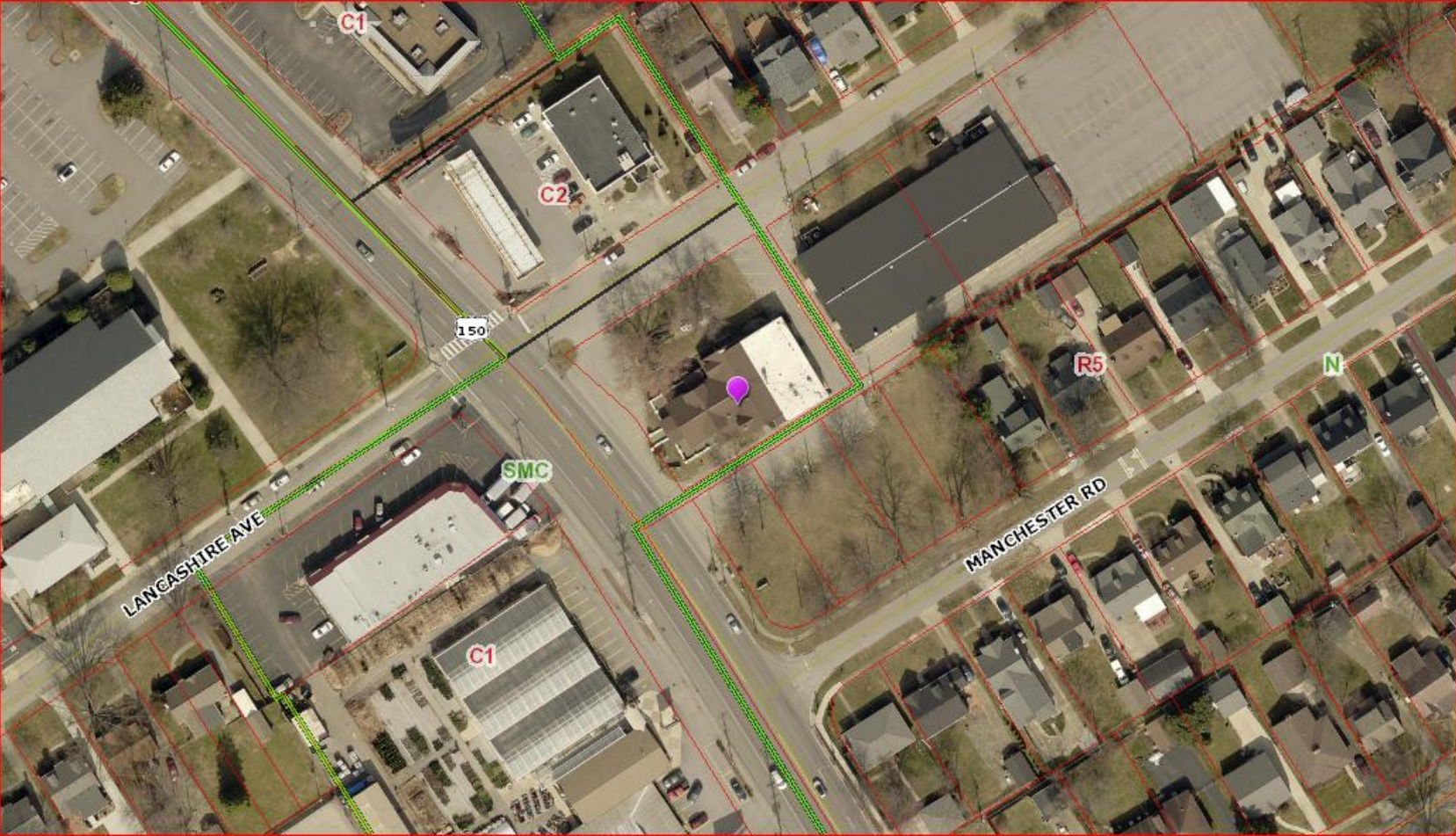
Waiver to allow pavement to encroach into a 10 foot Vehicular Use Landscape Buffer Area along a Bardstown Road and a portion of Lancashire Drive.

Waiver not to provide the required 25 perimeter Landscape Buffer Area and required plantings along the south and east property lines.

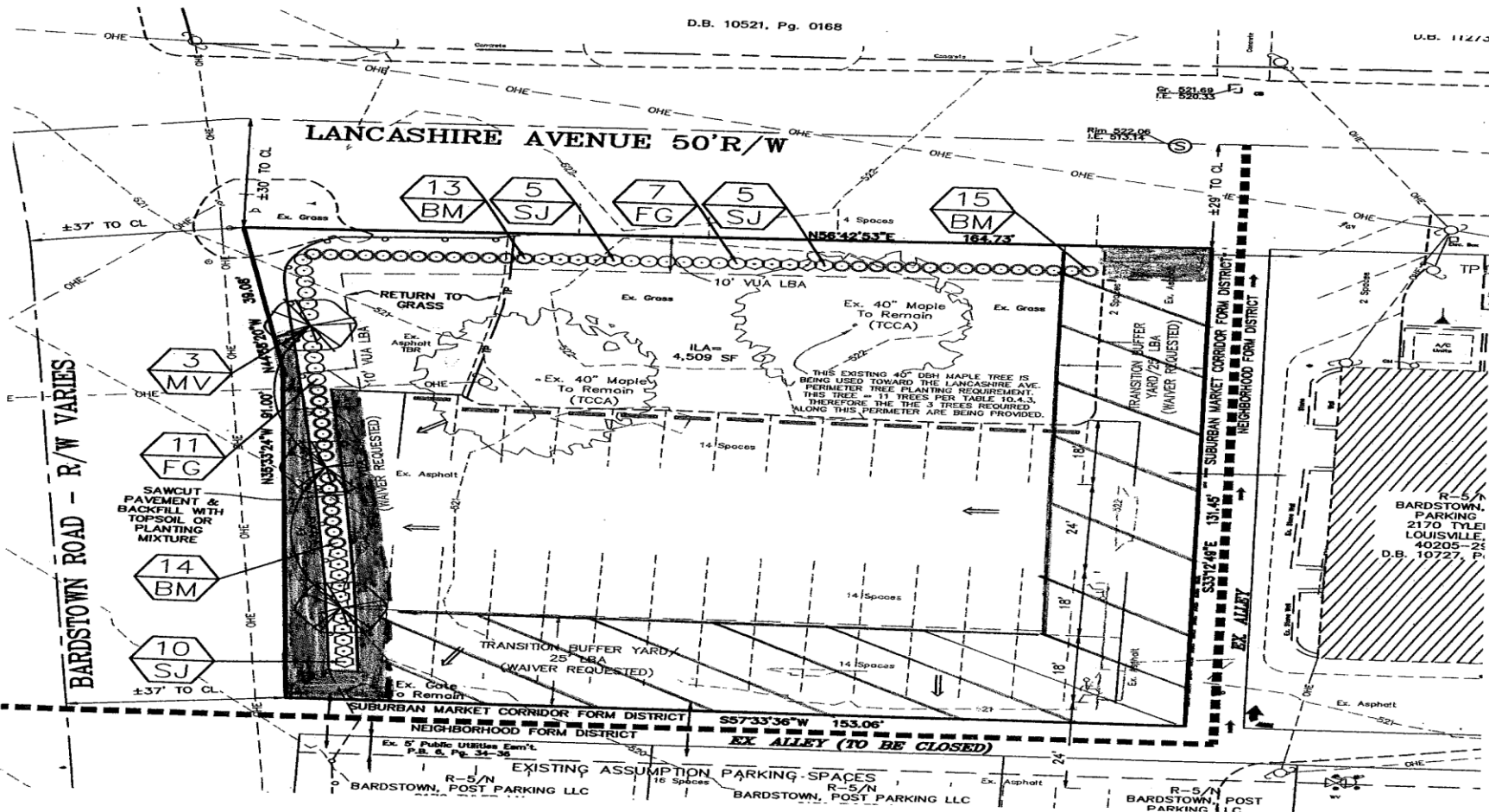
Zoning



Aerial



LANCASHIRE AVENUE 50'R/W



BARDSTOWN ROAD - R/W VARIES

SAWCUT PAVEMENT & BACKFILL WITH TOPSOIL OR PLANTING MIXTURE

SUBURBAN MARKET CORRIDOR FORM DISTRICT NEIGHBORHOOD FORM DISTRICT

EXISTING ASSUMPTION PARKING SPACES R-5/N BARDSTOWN, POST PARKING LLC

R-5/N BARDSTOWN, POST PARKING LLC

R-5/N BARDSTOWN, PARKING 2170 TYLE LOUISVILLE, 40205-24 D.B. 10727, P.