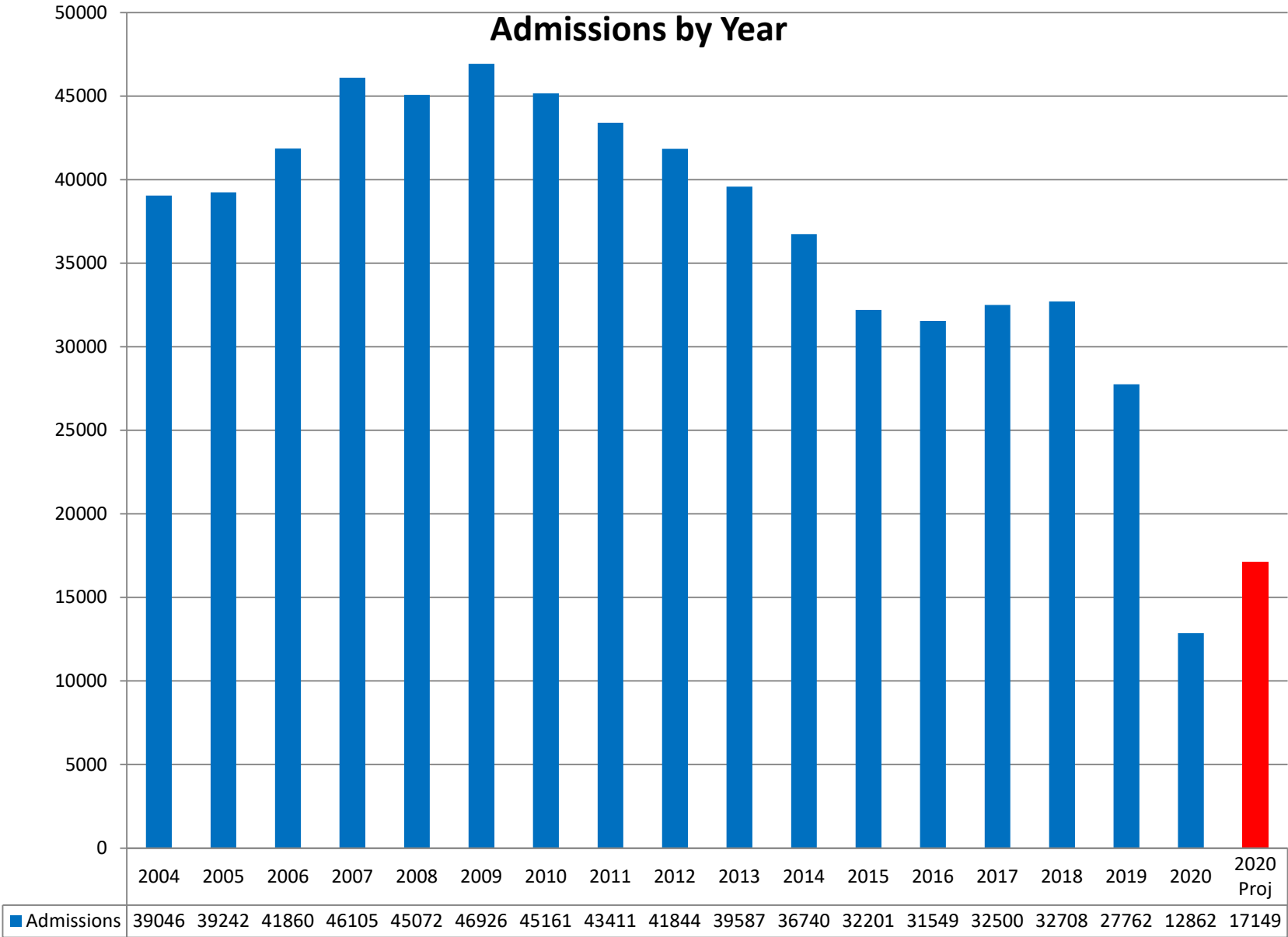
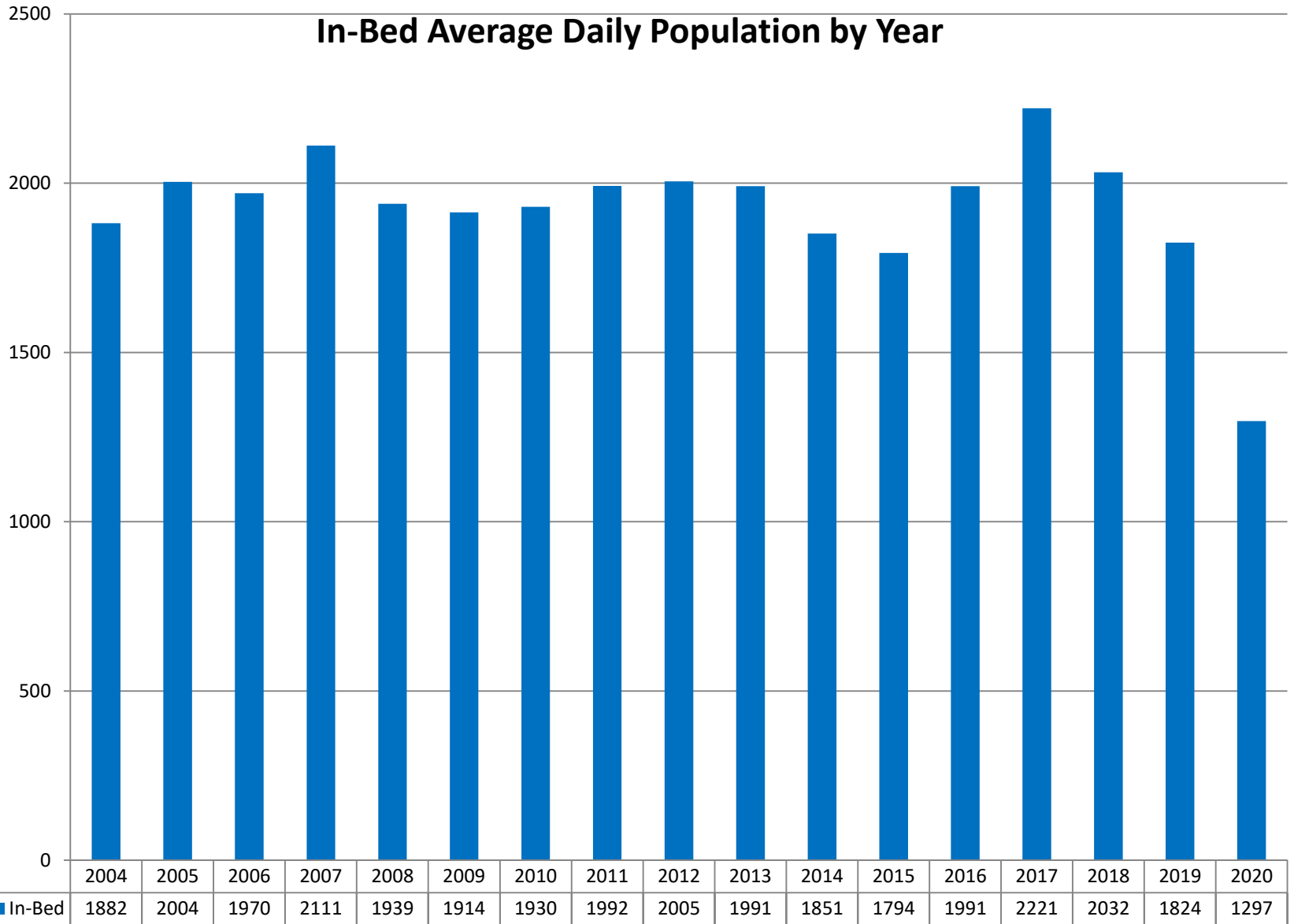


Jail Policy Committee October 27, 2020 – Jail Population Data

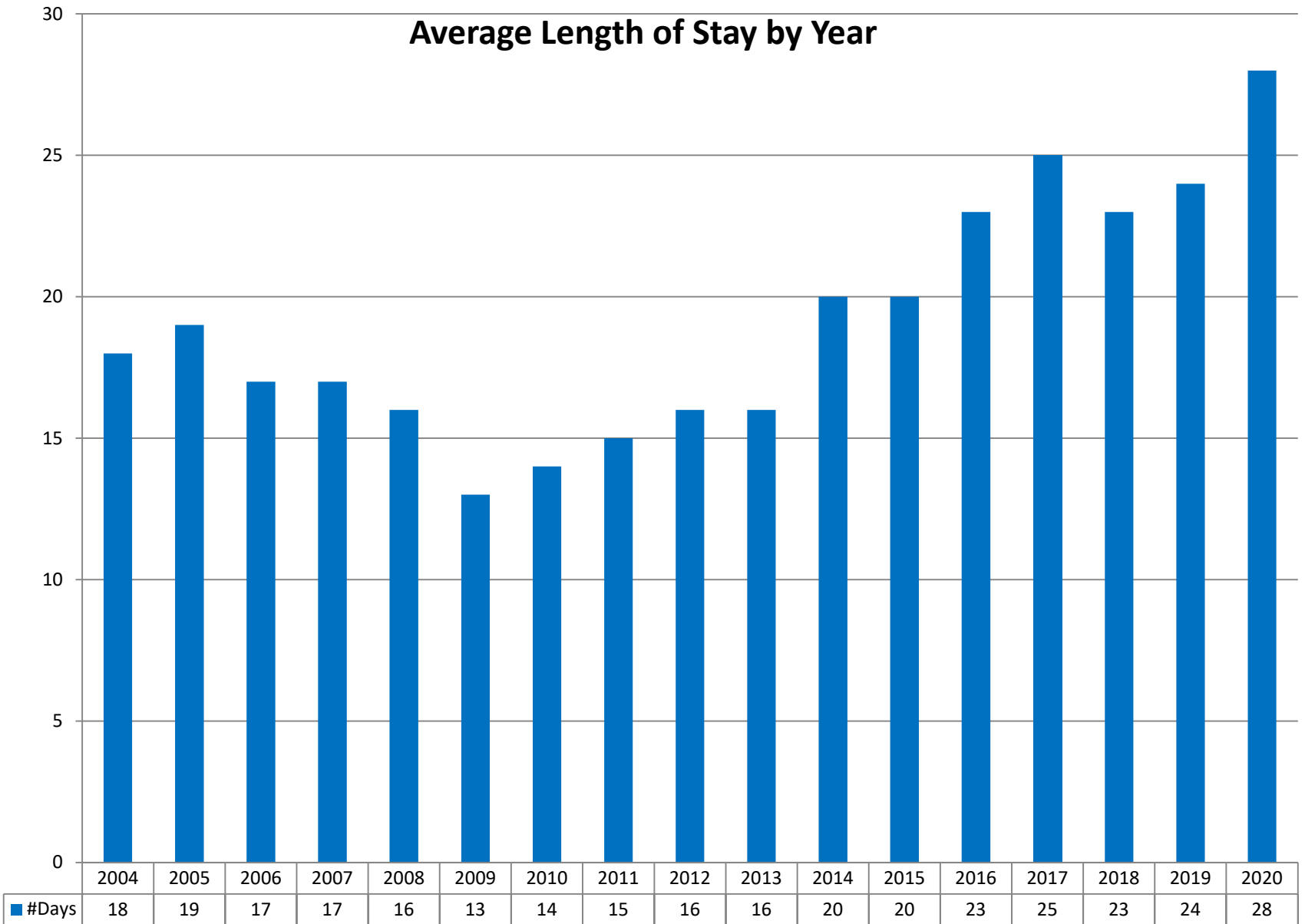


Jail Policy Committee October 27, 2020 – Jail Population Data



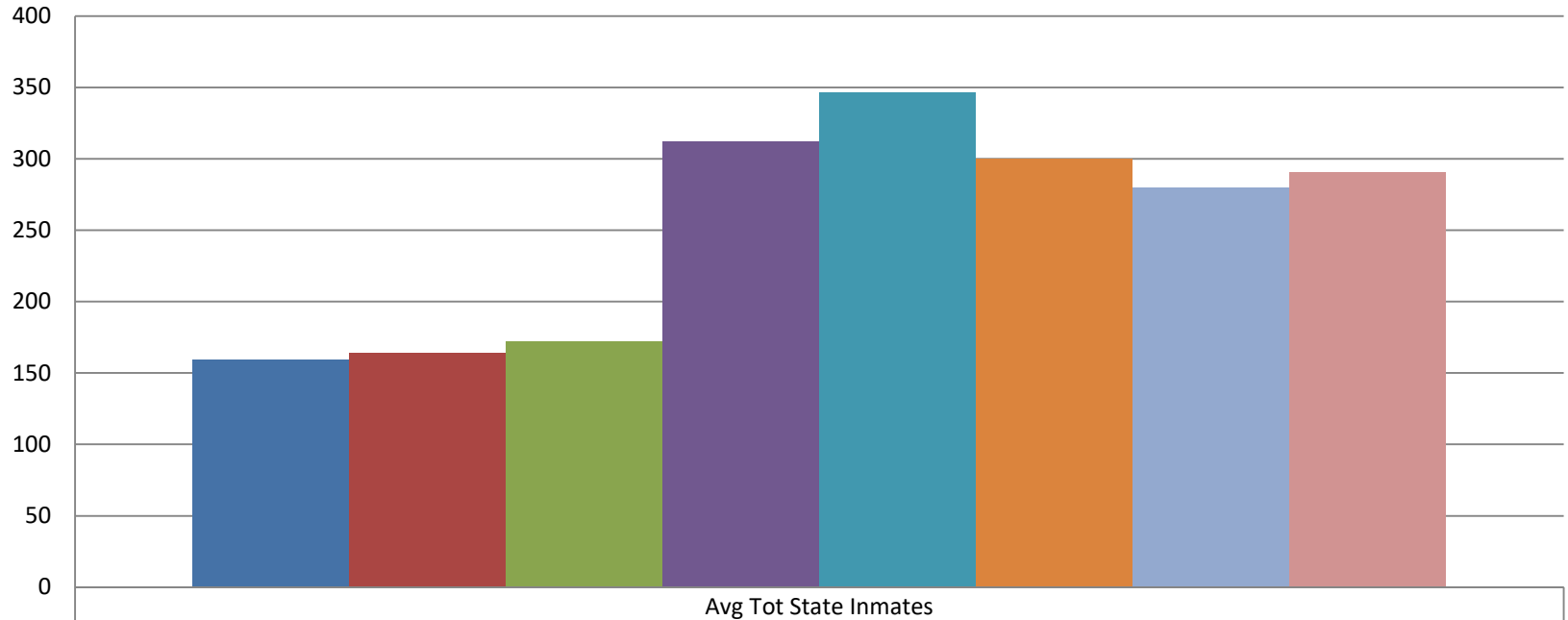
Jail Policy Committee October 27, 2020 – Jail Population Data

Average Length of Stay by Year



Jail Policy Committee October 27, 2020 – Jail Population Data

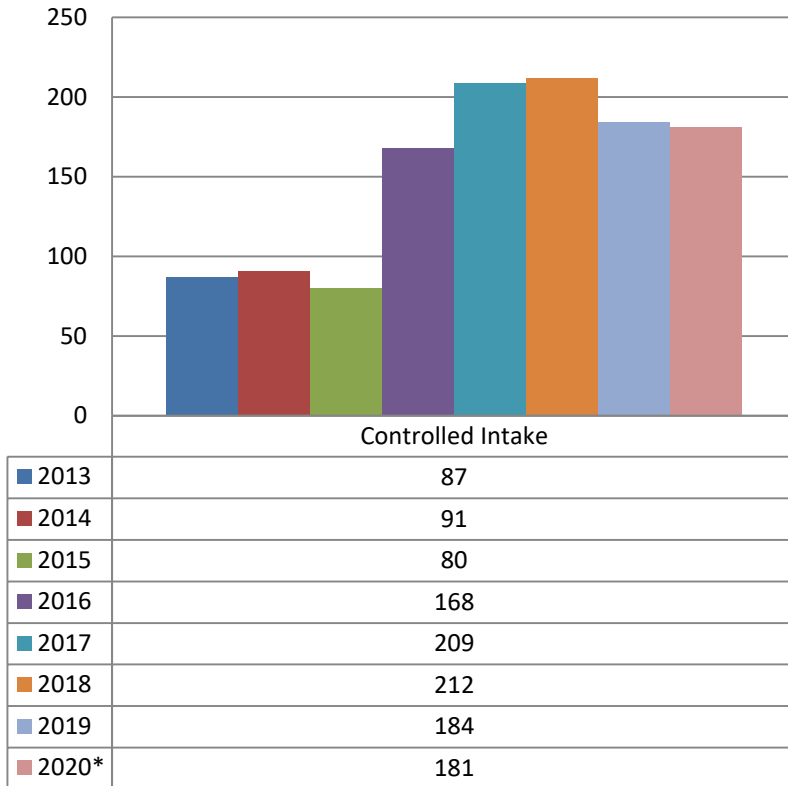
Average Total State Inmate Population 2013-2020



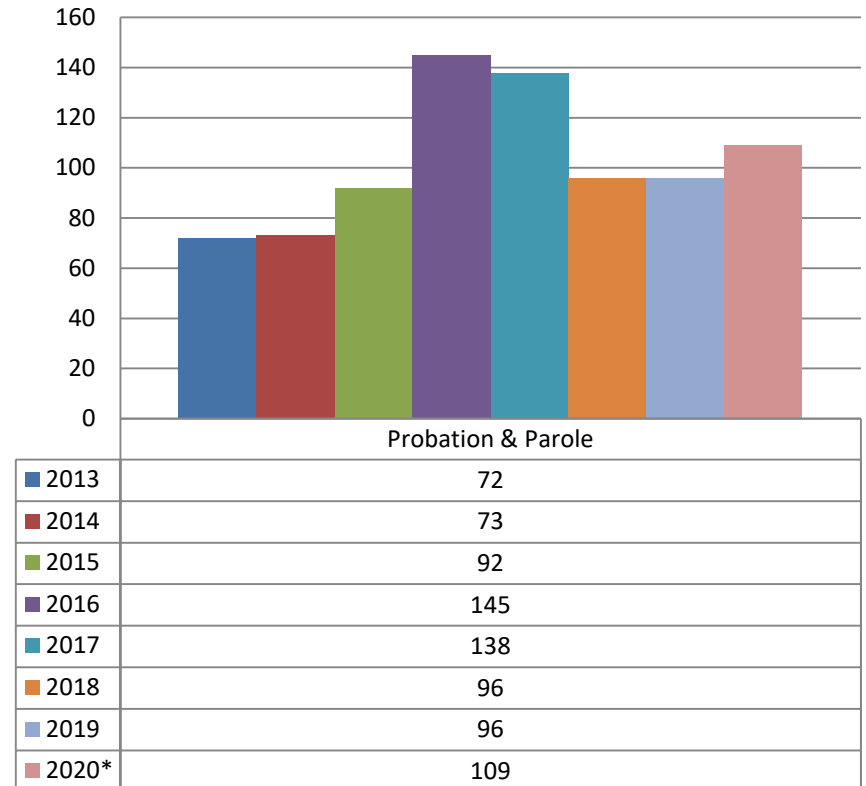
	Avg Tot State Inmates
■ 2013	159
■ 2014	164
■ 2015	172
■ 2016	312
■ 2017	346
■ 2018	300
■ 2019	280
■ 2020*	290

Jail Policy Committee October 27 , 2020 – Jail Population Data

Average Daily Population - Controlled Intake by Year 2013- 2020



Average Daily Population - Probation and Parole State Inmates by Year 2013-2020



2013 based on October through December

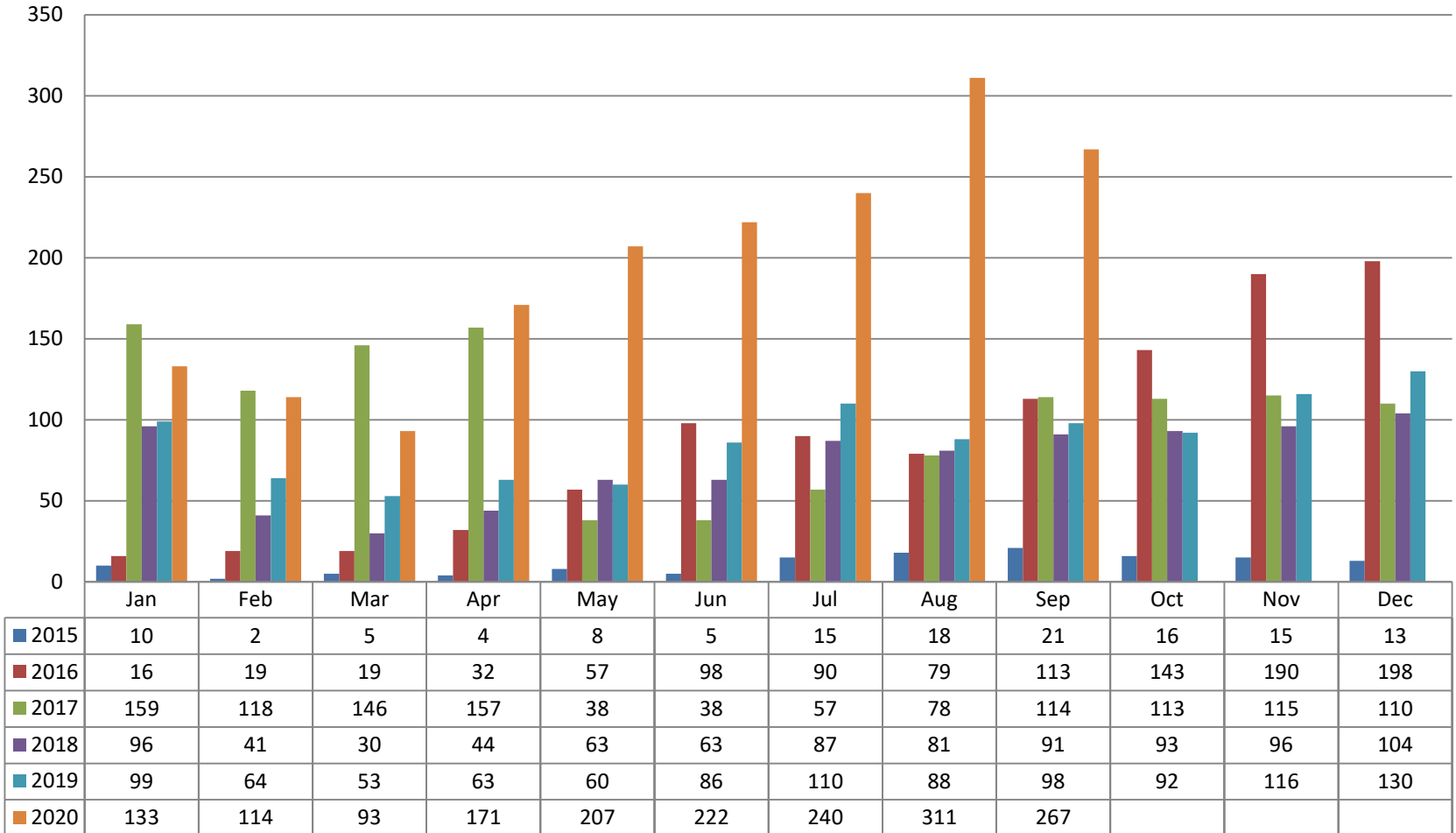
*2020 current through last completed month

Controlled Intake refers to inmates sentenced by the court, awaiting transfer to a state corrections institution

Probation and Parole Inmates refer to those returned to custody, awaiting transfer to a state or other jail institution

Jail Policy Committee October 27, 2020 – Jail Population Data

Average Total State Inmate Population Over 45 Days by Month and Year 2015-2020



Jail Policy Committee October 27, 2020 – Jail Population Data

Average Total State Inmate Population Under 45 Days by Month and Year 2015-2020

