

LAND DESIGN & DEVELOPMENT, INC.
ENGINEERING • SURVEYING • LANDSCAPE ARCHITECTURE
503 Washburn Avenue, Suite 101
Louisville, Kentucky 40222
(502) 426-9374 FAX (502)426-9375

RECEIVED
MAR 12 2018
LAND DESIGN SERVICES

**Rezoning Descriptions
For Moss Creek Tracts 10 and 11
Case: 18ZONE1011
(March 12, 2018)**

Page 1 of 2

Tract 10: Beginning at a point on the northerly right-of-way of Goalby Drive thence with said right-of-way with a curve to the right with a radius of **55.00 feet** and a chord with a bearing and distance of **N 39°06'39" W 79.26 feet** to a point; thence with continuing with said right-of-way **N 06°59'15" E 5.00 feet** to a point; thence continuing with said right-of-way with a curve to the right with a radius of **55.00 feet** and a chord with a bearing and distance of **N 50°53'21" E 76.28 feet** to a point; thence with continuing with said right-of-way **S 85°12'33" E 172.11 feet** to a point; thence continuing with said right-of-way with a curve to the right with a radius of **55.00 feet** and a chord with a bearing and distance of **S 40°12'33" E 77.78 feet** to a point; thence with continuing with said right-of-way **S 04°47'27" W 5.00 feet** to a point; thence continuing with said right-of-way with a curve to the right with a radius of **55.00 feet** and a chord with a bearing and distance of **S 49°47'27" W 77.78 feet** to a point; thence with continuing with said right-of-way **N 85°12'33" W 172.30 feet** to the Point of Beginning containing 0.69 acres more or less and being the same property deeded to Moss Creek Enterprises LLC of record in Deed Book 10350, Page 139 of record in the aforementioned Jefferson County Clerk's Office.

Tract 11: Beginning at a point on the northerly right-of-way of Casper Drive and being the southeasterly property corner of a tract belonging to Monty W. and Sun Nan Shaw by Deed Book 7195, Page 706 of record in the Jefferson County Clerk's Office in Louisville, Kentucky; thence leaving said right-of-way **N 06°59'14" E 291.50 feet** to a point on the southerly right-of-way of Goalby Drive; thence with the Goalby Drive right-of-way with a curve to the left with a radius of **200.00 feet** and a chord with a bearing and distance of **S 86°44'01" E 37.17 feet** to a point; thence with a curve to the right with a radius of **200.00 feet** and a chord with a bearing and distance of **S 88°15'21" E 26.58 feet** to a point; thence with continuing with said right-of-way **S 84°26'45" E 29.35 feet** to a point; thence continuing with said right-of-way with a curve to the right with a radius of **20.00 feet** and a chord with a bearing and distance of **S 49°37'21" E 22.84 feet** to a point; thence continuing with said right-of-way with a curve to the left with a radius of **95.00 feet** and a chord with a bearing and distance of **S 50°00'15" E 109.54 feet** to a point; thence with continuing with said right-of-way **S 85°12'33" E 172.30 feet** to a point; thence continuing with said right-of-way with a curve to the left with a radius of **95.00 feet** and a chord with a bearing and distance of **N 53°01'04" E 126.57 feet** to a point;

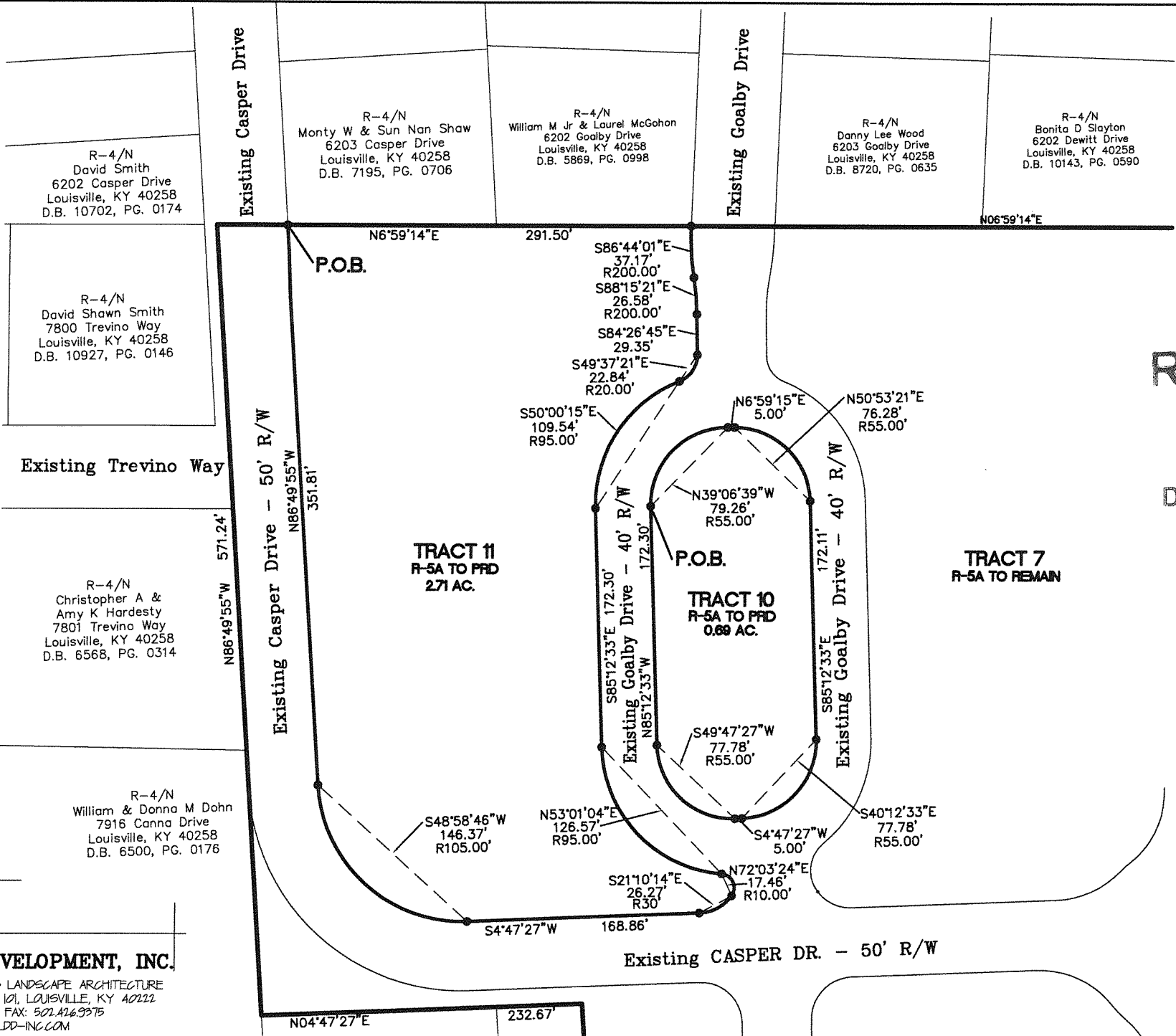
thence continuing with said right-of-way with a curve to the right with a radius of **10.00 feet** and a chord with a bearing and distance of **N 72°03'24" E 17.46 feet** to a point; thence continuing with said right-of-way with a curve to the right with a radius of **30.00 feet** and a chord with a bearing and distance of **S 21°10'14" E 26.27 feet** to a point on the westerly right-of-way of Casper Drive; thence with the Casper Drive right-of-way **S 04°47'27" W 168.86 feet** to a point; thence with said Right of way with a curve to the right with a radius of **105.00 feet** and a chord with a bearing and distance of **S 48°58'46" W 146.37 feet** to a point; thence continuing with said right-of-way **N 86°49'55" W 351.81 feet** to the **Point of Beginning**; containing 2.71 acres more or less and being the same property deeded to Moss Creek Enterprises LLC of record in Deed Book 10350, Page 139 of record in the aforementioned Jefferson County Clerk's Office.

RECEIVED

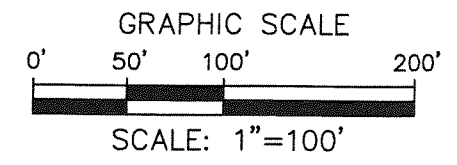
MAR 12 2018

PLANNING &
DESIGN SERVICES

G:\Current Projects\05021\dwg\PLANNING\05021-REZONING-G-1.dwg, 3/12/2018 8:29:26 AM, helton, 1:1



RECEIVED
MAR 12 2018
PLANNING &
DESIGN SERVICES



18ZONE1011
ZONING CHANGE EXHIBIT PLAT
Property of:
MOSS CREEK ENTERPRISES LLC
P.O. BOX 70458
LOUISVILLE, KENTUCKY 40270
DEED BOOK 10350, PAGE 0139
TRACT 10: GOALBY DRIVE
TRACT 11: 6110 GOALBY DRIVE
DATE: 3-12-18

LD&D
LAND DESIGN & DEVELOPMENT, INC.
ENGINEERING • LAND SURVEYING • LANDSCAPE ARCHITECTURE
509 WASHBURN AVENUE, SUITE 101, LOUISVILLE, KY 40212
PHONE: 502.426.9374 FAX: 502.426.9375
WEB SITE: WWW.LDD-INC.COM