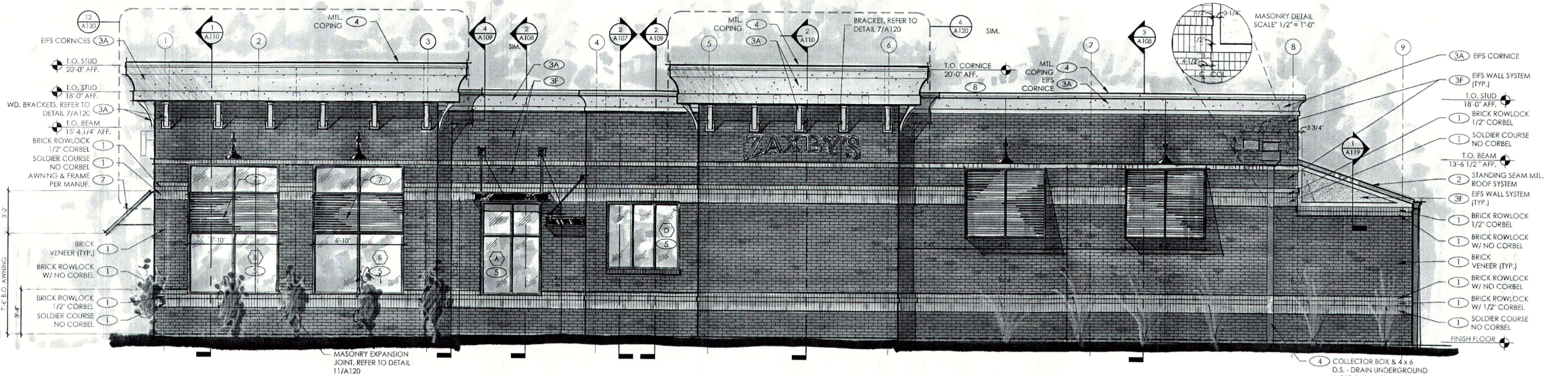


2 SIDE ELEVATION
A106 1/4" = 1'-0"



1 SIDE ELEVATION
A106 1/4" = 1'-0"

EXTERIOR FINISH SCHEDULE

- ALL MATERIALS & INSTALLATION SHALL CONFORM TO APPLICABLE ASTM STANDARDS UNLESS GOVERNING AUTHORITIES HAVE DIFFERENT REQUIREMENTS.
- 1 STANDARD BRICK UNIT 3 5/8" x 2" x 7 5/8" RUNNING 1/2 BOND
FIELD COLOR: BRICK - BEAUMONT (CHEROKEE BRICK)
ACCENT COLOR: BRICK - MOSSTOWN (CHEROKEE BRICK)
MORTAR - BUFF
15# ROOFING FELT OVER ALL SUBSTRATES OR SEALED DENS GLASS. GOLD SHEATHING. USE ICE & WATER SHIELD BY W.R. GRACE WHERE INDICATED, SEE SECTIONS & SPECIFICATIONS.
GROUT VOID SOLID 4 FENCE AND BELOW F.F. PROVIDE VAPOR BARRIER AS INDICATED.
CONTINUOUS, THROUGH WALL FLASHING, EPDM (BY W.R. GRACE) OR EQUAL, AT BOTTOM OF WALLS & ABOVE OPENINGS. CUT FLASHING FLUSH WITH EXT. FACE. PROVIDE CELL VENT TYPE WEEPS, ABOVE FLASHING @ 32" O.C. MAX.
3/8" THICK MORTAR JOINTS. ASTM C-270, TYPE N.
DUR-O-WALL HORIZ. REINF. ON CMU FENCE
DUR-O-WALL, DA 210 / DA 720 TRIANGULAR MTL. WALL TIES (OR EQUAL) @ 16" O.C. VERT. & 16" O.C. HORIZ. 14 GA. SEE SECTIONS & SPECS. ATTACH TO STUDS WITH (2) 10 - 16 x 1-1/2" SCREWS.
 - 2 STANDING SEAM MTL., ROOFING - SEE 4
 - 3 STO TO HAVE "SWIRL" FINISH AND CAN BE PAINTED. FINISH COLORS, BELOW AND ON FINISH SCHEDULE CAN BE PAINTED. STO BRAND EFS ON CMU, OR SHEATHING: "STO ESSENCE" SPEC. E100
ICC EVALUATION REPORT NO. ESR-1720
= FIELD COLOR: SHERWIN WILLIAMS COLOR ZAXBY'S CREAM
= ACCENT COLOR: SHERWIN WILLIAMS COLOR DARK TAN

- 4 PREFINISHED, METAL COPING / GRAVEL STOP & ROOFING
COLOR: COPINGS: MATCH SURROUNDING CORNICE COLOR
ROOFING @ REAR SHED: BLACK
MATERIAL SHALL BE 24 GAUGE, HOT DIPPED GALVANIZED STEEL OR 0.032" THICK ALUM. FINISH SHALL BE KYNAR 500 FLUOROCARBON COATING. ACCEPTABLE MANUFACTURERS ARE AS FOLLOWS:
A. BERRIDGE MANUF. CO., HOUSTON, TX.
B. MM SYSTEMS, LUCKER, GA.
C. APPROVED EQUALS WILL BE ACCEPTED
PROVIDE ALL RELATED ACCESSORIES: FLASHING, END CLOSURES, GUTTERS, DOWNSPOUTS, ETC. IN MATCHING COLOR. INSTALL ALL MATERIALS PER MANUF.'S RECOMMENDATIONS. A MANUFACTURER'S WARRANTY AGAINST DISCOLORATION & WEATHER-TIGHTNESS WILL BE REQUIRED. SEE SPECIFICATIONS.
NOT ALL ROOF PENETRATIONS & ACCESSORIES ARE SHOWN ON THIS DRAWING. IT IS THE RESPONSIBILITY OF THE G.C. TO INSTALL ITEMS INDICATED ELSEWHERE.
- 5 STOREFRONT: WINDOWS & ENTRANCE DOORS
ACCEPTABLE MANUFACTURER: KAWNEER, REFER TO SPECIFICATIONS.
GLAZING SHALL BE IN ACCORDANCE W/ THE FOLLOWING VALUES:

GLAZING - UNCOATED TINTED GLASS						
APPEARANCE	LOCATION	TYPE & THICKNESS	U FACTOR	SHGC	VLT	VLR
GRAY TINT	EXTERIOR SIDE	1/4" TEMPERED	.47	.45	39.6	7.3
CLEAR - NO TINT	INTERIOR SIDE	1/4" TEMPERED	.58	.69	79	15

CONTACT PERSON @ QUALITY GLASS: JOHNNY DOSTER @ 706-548-4481

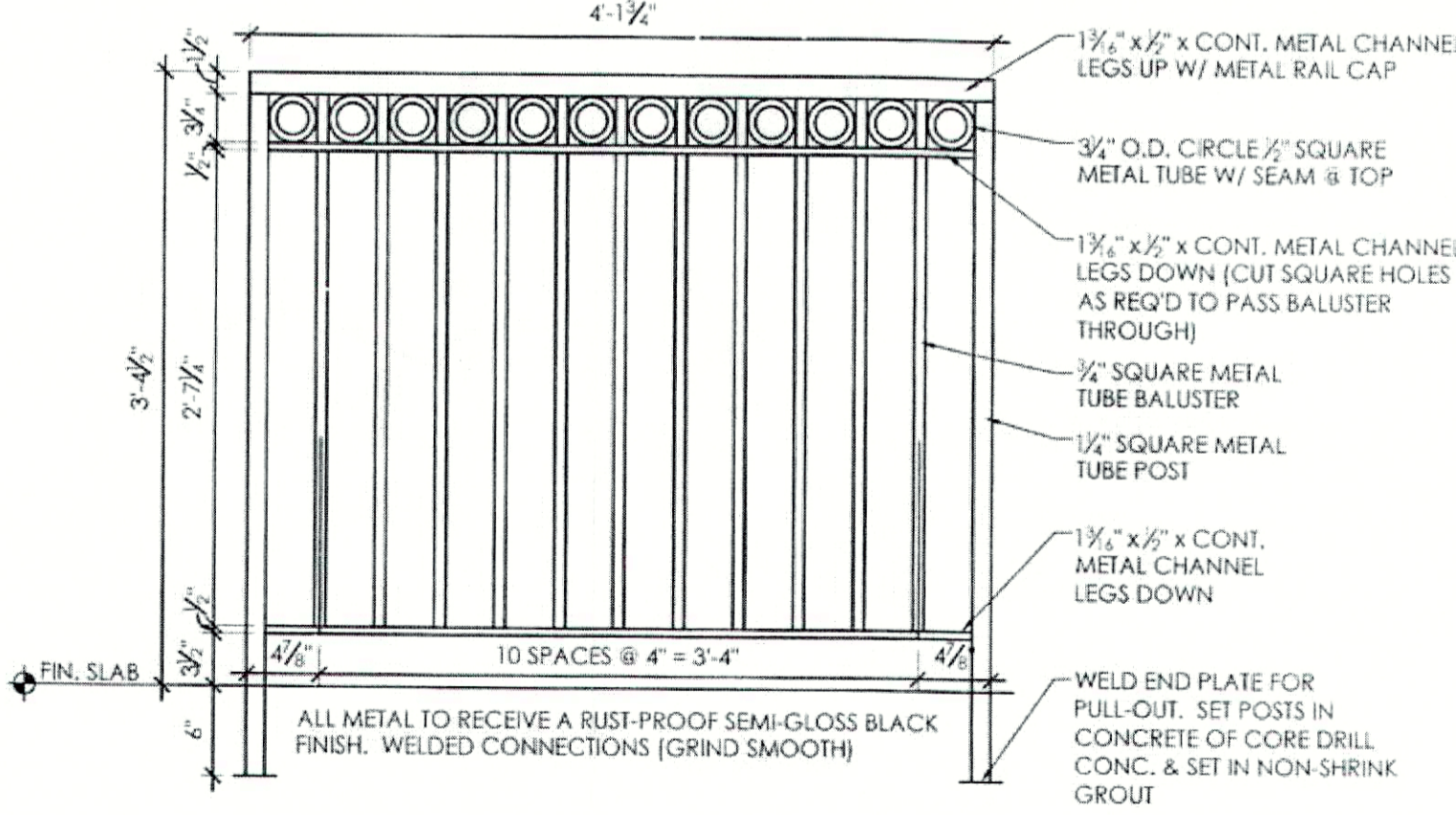
- 6 SELF-CLOSING & TEMPERED GLASS
DRIVE-THRU WINDOW: ROUGH OPENING = 6'-0" WIDE x 5'-8" HIGH
QUICKSERV MODEL SC-4030-IP SELF CLOSING HORIZ. SLIDER WINDOW FIT INTO A "STOREFRONT" FRAME. MATCH STOREFRONT IN COLOR & GLAZING.
QUICKSERV-DIVISION OF MCE SYSTEMS CORP.
P.O. BOX 40466, HOUSTON, TX 77240-0466
P. 800-388-8307 F. 713-462-1936
STOREFRONT & SLIDER ALSO BY:
QUALITY GLASS P. 706-548-4481
- 7 PLANTATION STYLE AWNINGS
PROJECT AWNING: ALUM. FRAME W/ RC SLATS, BLACK
STRUCTURE BY AWNING SUPPLIER
ANY FABRIC TO MEET: ASTM E84-95, FLAME SPREAD RATING CLASS A (10).
FIELD VERIFY ALL AWNING CONDITION AND SIZES.
- 8 BLACK GOOSENECK FIXTURES ARE TO BE INSTALLED BY THE G.C.
ALL SPECIFIED MATERIALS MUST BE INSTALLED PER MANUFACTURER'S REQUIREMENTS. ANY DISCREPANCIES OR CONFLICTS BETWEEN THE DRAWINGS AND THE MANUFACTURER'S REQUIREMENTS SHOULD BE IDENTIFIED BY THE CONTRACTOR PRIOR TO INSTALLATION AND DURING THE BID PHASE TO AVOID CHANGE ORDERS.
- 9 LADDER, PAINT BLACK
- GLAZING, REFER TO SHEET A117
- DOORS, REFER TO SHEET A115

FIELD COLOR: SHERWIN WILLIAMS
"ZAXBY'S CREAM" - PAINT MIXTURE

COLORANT	1/32 OZ.
R2	1
G2	1
N1	7
Y3	57
BASE 1 GALLON	AB2W51
A-100 SATIN EXTERIOR LATEX	HOUSE PAINT EXTRA WHITE

ACCENT COLOR: SHERWIN WILLIAMS
"ZAXBY'S DARK TAN" - PAINT MIXTURE

COLORANT	1/32 OZ.
B1	37
R2	12
Y3	2521
W1	63
BASE 1 GALLON	AB2W51
A-100 SATIN EXTERIOR LATEX	HOUSE PAINT EXTRA WHITE



3 DECORATIVE METAL GUARD RAIL
A106 1/4" = 1'-0"