



RUEFF SIGNS

www.rueffsigns.com

1530 East Washington St.
Louisville, Kentucky 40206

502-582-1714 - Phone
502-584-6427 - Fax

CUSTOMER

Dr Haq

LOCATION

Preston Hwy

SALESMAN

Allen Mercke

DATE

5-4-17

SCALE

1/2" = 1'

FILE NAME

Dr Haq \ Monument Sign Cabinet



ALL ELECTRICAL SIGNS ARE 120 VOLTS UNLESS OTHERWISE INDICATED

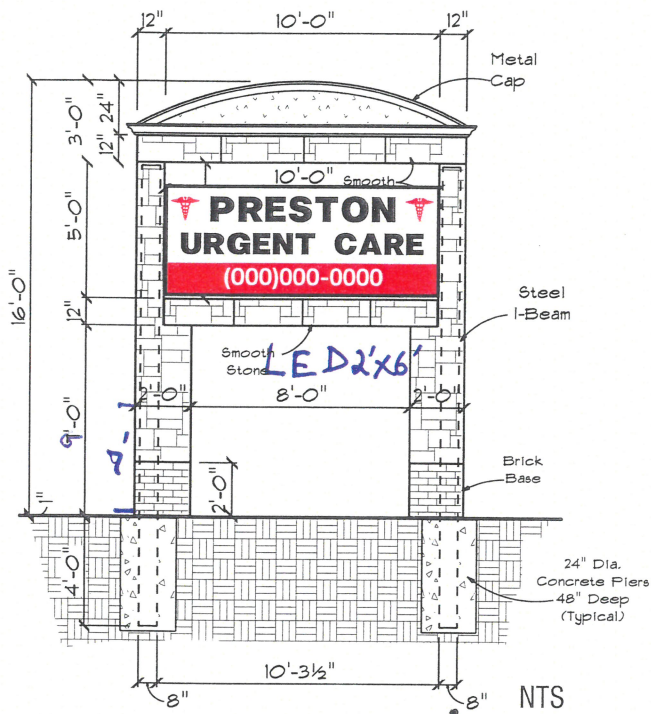
This sign is intended to be installed in accordance with the requirements of Article 600 of the National Electrical Code and/or other applicable local codes. This includes proper grounding and bonding of the sign.

This is a sketch, NOT A BLUEPRINT. Any photo overlays or images are merely an attempt to show the sign(s) as close as possible to how they may appear installed.

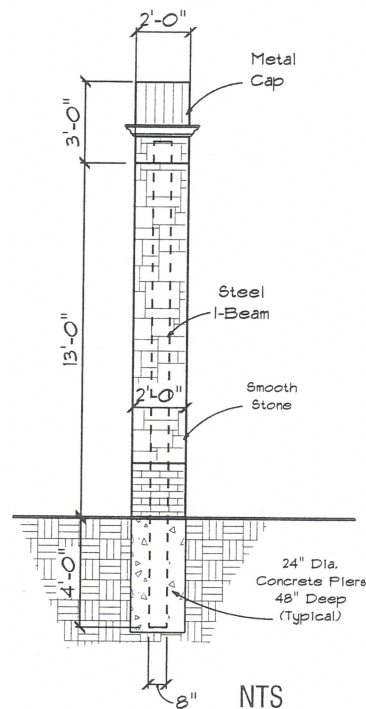
FINAL SIZES ARE AS LISTED ON THE MECHANICAL BREAKDOWN.

The contents of this drawing and all design elements are the property of Rueff Signs, Inc. They are not to be reproduced, changed, or exhibited to anyone outside of your company in whole or in part without written permission from the owner of Rueff Signs, Inc. All such actions are prohibited by law.

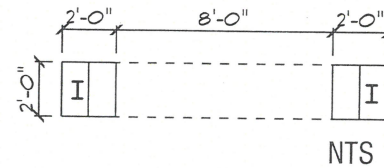
© RUEFF SIGNS, 2016 ALL RIGHTS RESERVED



FRONT ELEVATION



SIDE ELEVATION



RECEIVED

JUL 09 2018

PLANNING &
DESIGN SERVICES

Refurbished D/F Sign Cabinet to mount
into existing monument sign structure.



18 Waiver 1020