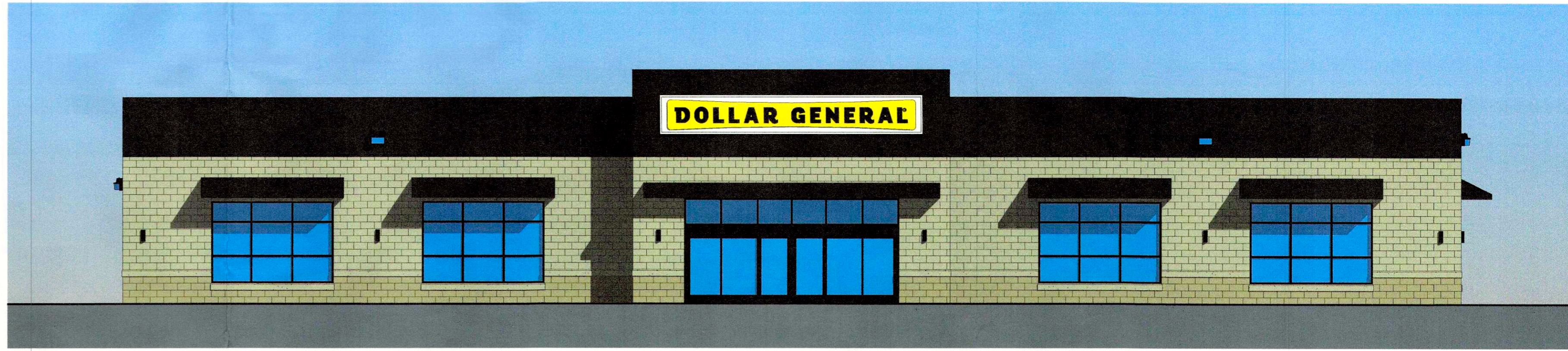
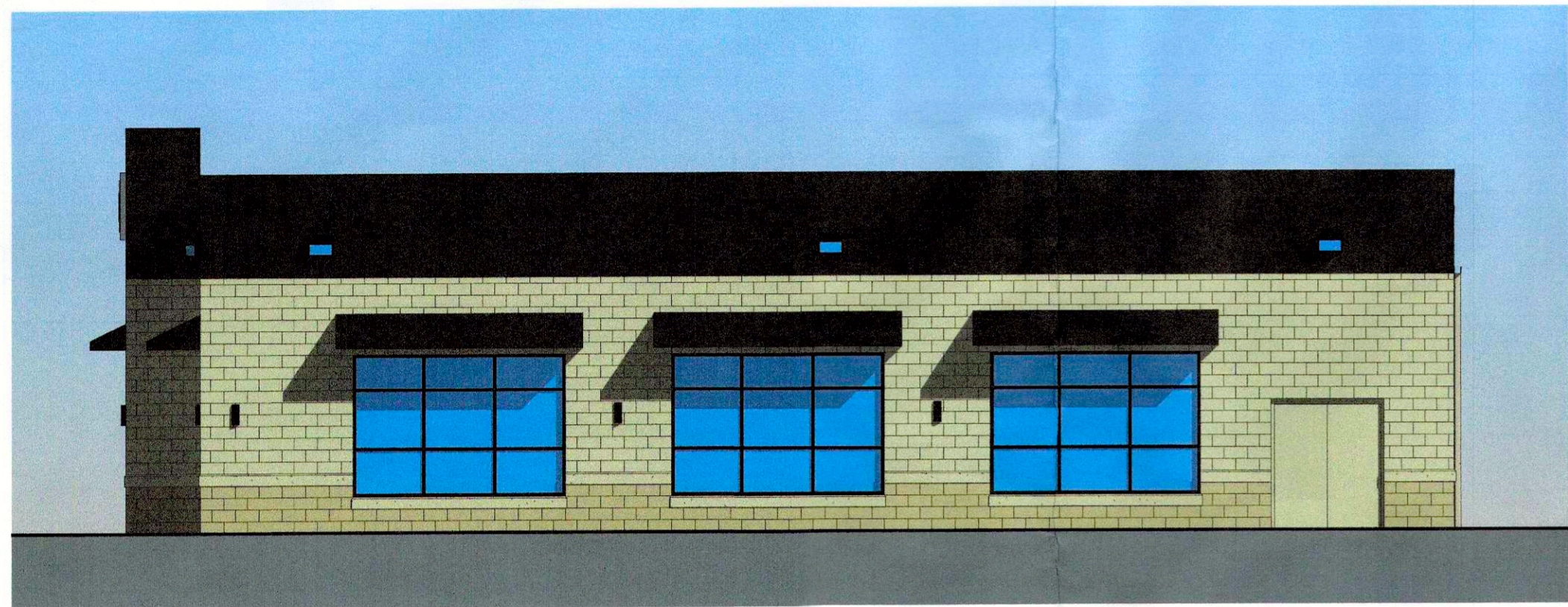


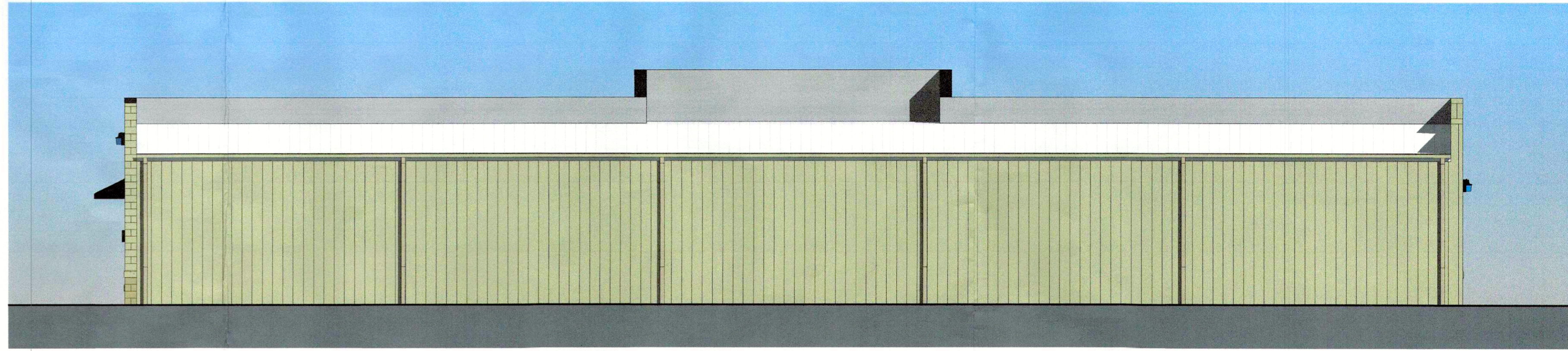
COLOR LEFT SIDE ELEVATION
1/8" = 1'-0"



COLOR FRONT ELEVATION
1/8" = 1'-0"



COLOR RIGHT SIDE ELEVATION
1/8" = 1'-0"



COLOR REAR ELEVATION
1/8" = 1'-0"



3D PERSPECTIVE

RECEIVED
DEC 16 2019
PLANNING &
DESIGN SERVICES

DOLLAR GENERAL

7701 SMYRNA PARKWAY

LOUISVILLE, KENTUCKY

SEWELL AND SEWELL
ARCHITECTS

19-FDDP-0061