

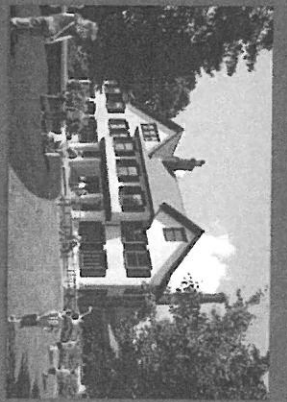
1918 Holingsworth Learning



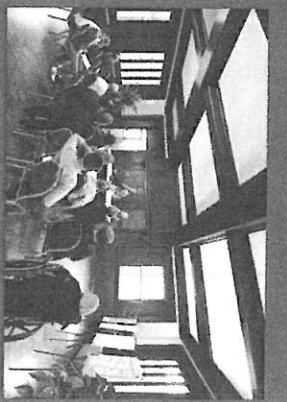
21st Cent. Exterior, Yellow-Facade, Grey-Tim.jpg



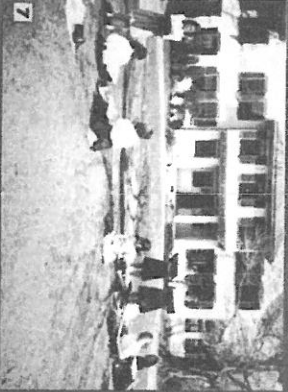
Back Room - Kids.jpg



Exterior Yellow Black Grey.jpg



Front Room - Neighborhood Meeting.jpg



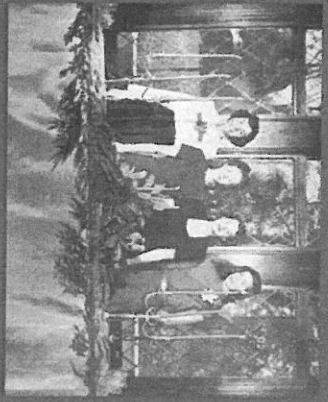
KHS Girls on Lawn.jpg



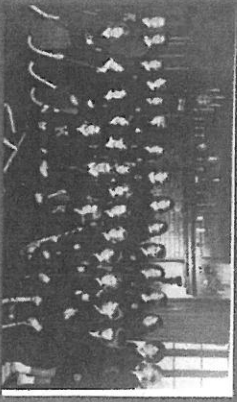
KHS Library Group.jpg



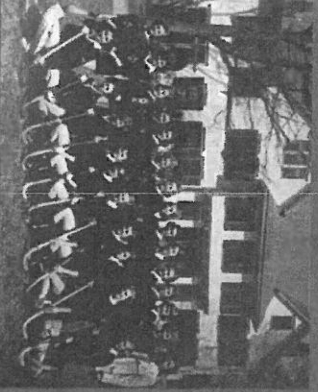
KHS Library Services.jpg



KHS Library.jpg



KHS Team by 20.jpg



KHS Team.jpg



Screen Shot 2019-01-28 at 3:09:43 PM.jpg



Wearing Pic in Oct.jpg

# HIGHLANDS DOUGLASS NEIGHBOR

PUBLISHED BY THE HIGHLANDS-DOUGLASS NEIGHBORHOOD ASSOCIATION

## SAVE OUR CENTER UPDATE

By Sherry Cornell, President

Exciting things are happening at the Douglass Community Center. In partnership with Metro Parks, we are in the final stages of putting the initial structure stabilization work out for bid. This work will provide structural support for the 1st and 2nd floors so that they may be opened again for programming as soon as possible. Volunteers in the early part of 2018 provided time and elbow grease to prepare for these structural support initiatives. Architectural drawings for the garden wall, based on photographs and measurements taken of the original wall, have been made and are part of the renovations plan. Additionally, our team is working with the Parks Foundation to begin fundraising for renovations in time for end of year giving. The accompanying picture created by the Parks Foundation and PPA (Pickett/Passafiume Architecture) envisions the future of the Center and helps us all see the results of the time and effort invested in this community project. Envisioning the future of the Center helps us all see the potential!

Last year, our team was able to successfully nominate the Douglass Community Center for recognition on the National Historic Register. Now, we're applying for a historic marker to be placed on the property and hope to see that in place next spring. The Douglass Community Center was one of the original estate homes in the Douglass Park development at the turn of the century. Hollingsworth, as it was originally known, then became Kentucky Home School for Girls in the 1940s and continued as such until the city purchased the property in 1972 when it became the Douglass Community Center.

We hope you are as excited as we are about the progress that has been made and the plans for this Center going forward! As you can see, the Douglass Community Center is a busy place these days and the new programming and continuing improvements continue to fulfill the Center's role as a community asset. The Center supports Louisville Metro Parks and Recreation's mission to create a "City of Parks" and to provide recreation programs that will enhance the quality of life for metro citizens by maintaining and acquiring attractive, vibrant parks and recreation facilities, offering safe, diverse programs, and protecting these lands and resources for future generations.



*Artist rendering of future DCC.*

### INSIDE THIS ISSUE

President's Message.....	2
Our 2019 Membership Drive.....	2
Jazz & Blues Fest.....	3
Community Center Activities.....	4
Betty the Mannequin.....	5
New Business Members.....	6
Business Member List.....	7
Be a Volunteer .....	8
Organic Mulching.....	8
Support for Jazz & Blues Fest.....	9
HDNA Reforestation Project.....	10
Connecting with HDNA.....	11
HDNA Board Meetings.....	12
Join HDNA Today.....	12