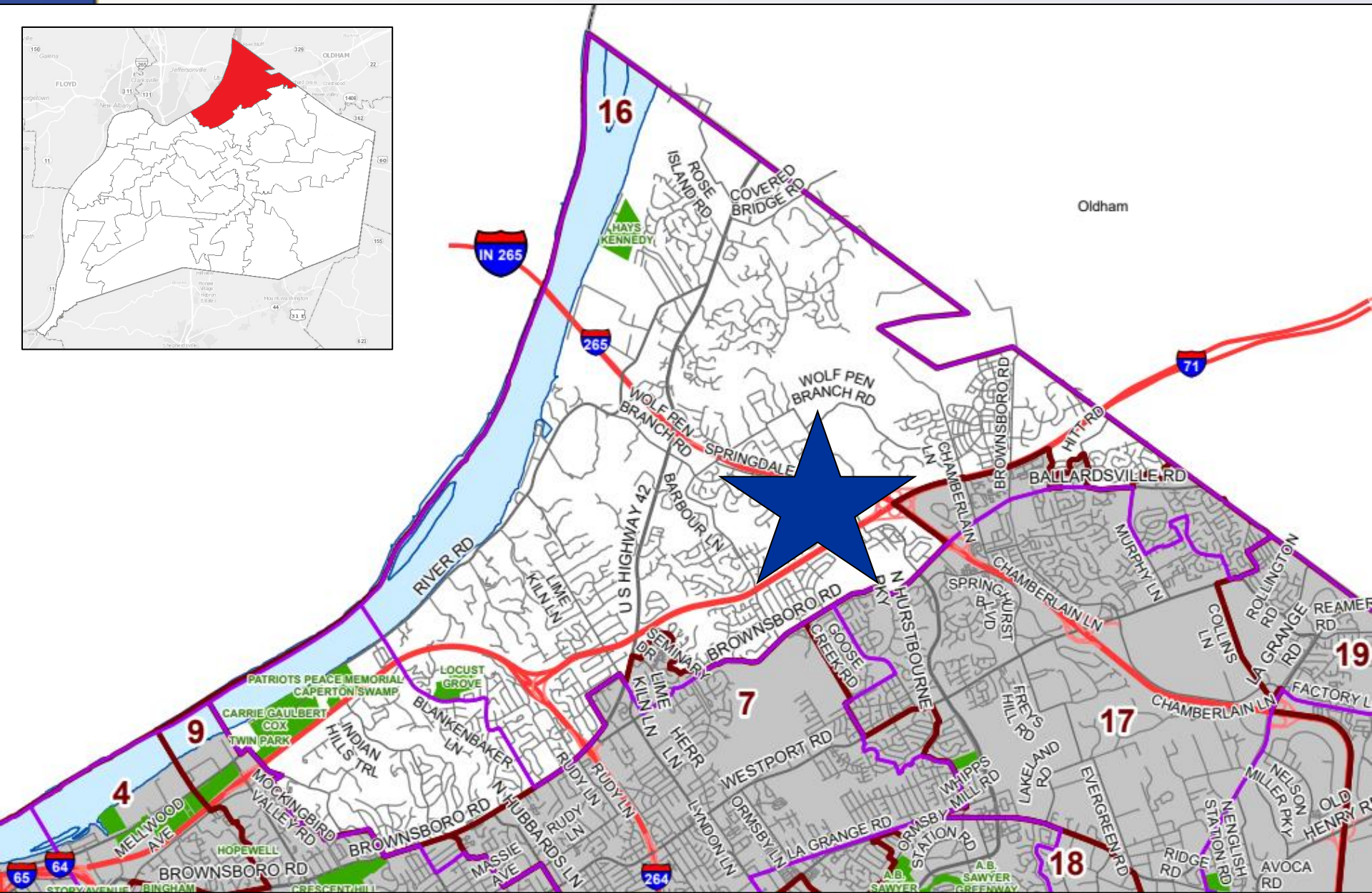
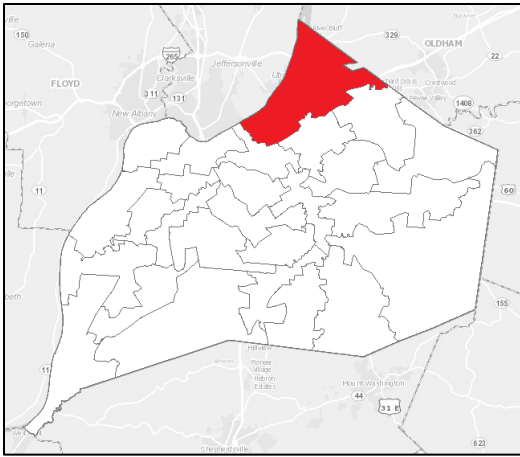


21-ZONE-0106

SPRINGDALE APARTMENTS



Planning & Zoning Committee
December 7, 2021

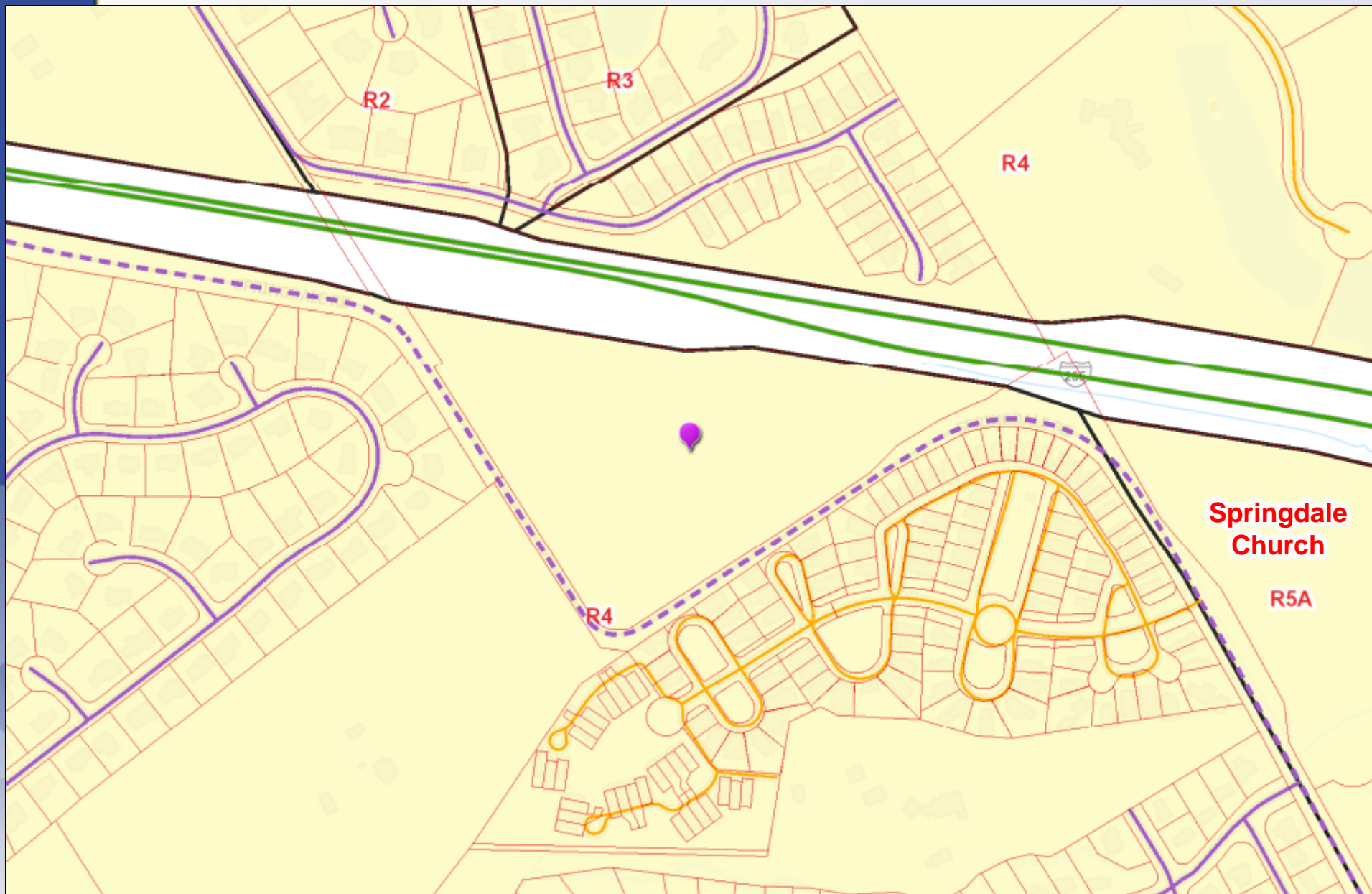


Louisville METRO

**5217 Springdale Road
District 16 - Scott Reed**

21-ZONE-0106





Louisville

Existing: R-4/N
Proposed: R-7/N

21-ZONE-0106

Requests

- Change-in-Zoning from R-4 to R-7
- Sidewalk Waiver
- Detailed District Development Plan/Major Preliminary Subdivision with Binding Elements

Case Summary

- Proposing 302 units on 17.97 acres
- ROW dedication for potential realignment of Springdale Road
- Sidewalk proposed along this ROW
- Limited work on existing Springdale Road to preserve existing trees
- Additional binding elements added based on concerns from adjoining property owners

Current Proposed Development Plan



Relocated
dog park

Entrances relocated to
area of ROW dedication



BUILDING TYPE IV - REAR ELEVATION
SCALE: 1/8" = 1'-0"



BUILDING TYPE IV - LEFT ELEVATION
SCALE: 1/8" = 1'-0"



BUILDING TYPE IV - FRONT ELEVATION
SCALE: 1/8" = 1'-0"

Proposed elevations - three story townhouse buildings



Proposed elevations - four story buildings

Public Meetings

- Neighborhood Meeting held 6/29/2021
- LD&T meeting on 9/23/2021
- Planning Commission public hearing on 10/21/2021 and 11/4/2021
 - Three people spoke in opposition.
 - Motion to recommend approval of the change in zoning from R-4 to R-7 by a vote of 6-0-1.