



Starbucks Coffee Company
2401 Utah Avenue South
Seattle, Washington 98134
(206) 318-1575

These Drawings and Specifications are confidential and the property of Starbucks Coffee Company, which is the owner of the copyright in this work. They shall not be reproduced (in whole or in part), shared with third parties or used in any manner on other projects or extensions to this project without the prior written consent of Starbucks Coffee Company. The drawings and specifications are intended to express Design Intent for a prototypical Starbucks store (which is subject to change at anytime) and do not reflect actual site conditions. Neither party shall have any obligation to construct or complete the project (except as set forth in a written agreement) until a written agreement is fully executed by both parties.

Architect of Record
This drawing is a Design Development Document. Site specific modifications made under the responsible charge of the Architect and/or Engineer shall be noted on the drawings using this document for Bidding, Permitting, or Construction.

Rev	Date	By	Description

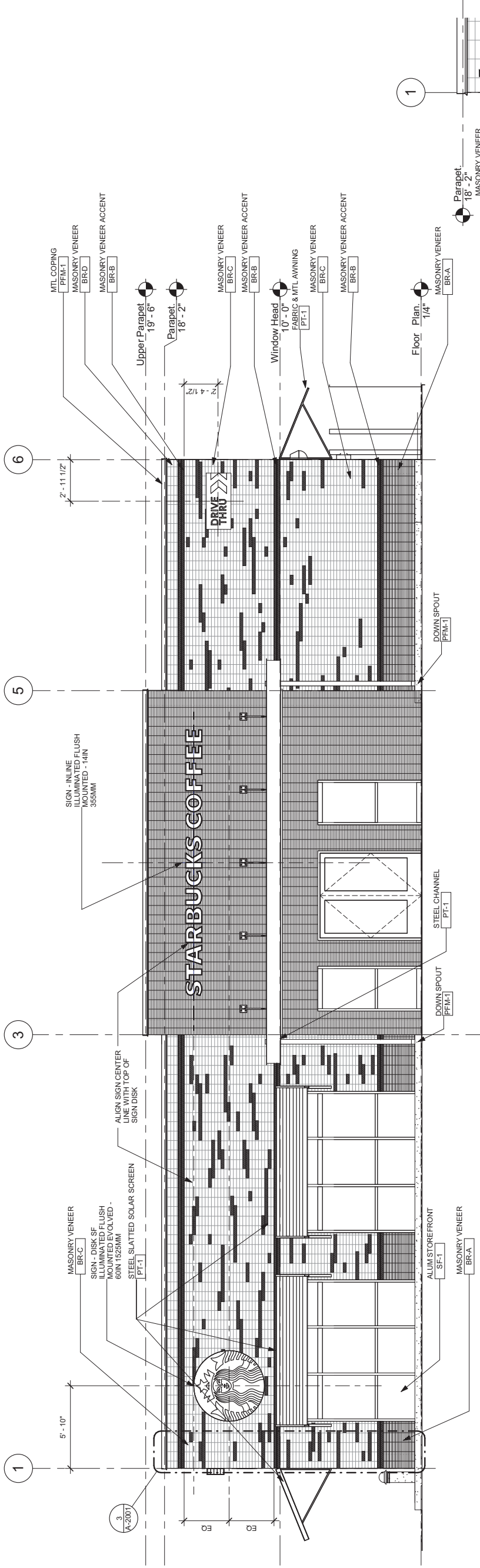
Project Name:
**DESIGN DEVELOPMENT
SINGLE TENANT BUILDING
PROTOTYPE SET V3.1**

Store #:
Project #:
Concept:
Palette:
Issue Date:
Design Manager:
LEED® AP:
Production Designer:
Checked by:

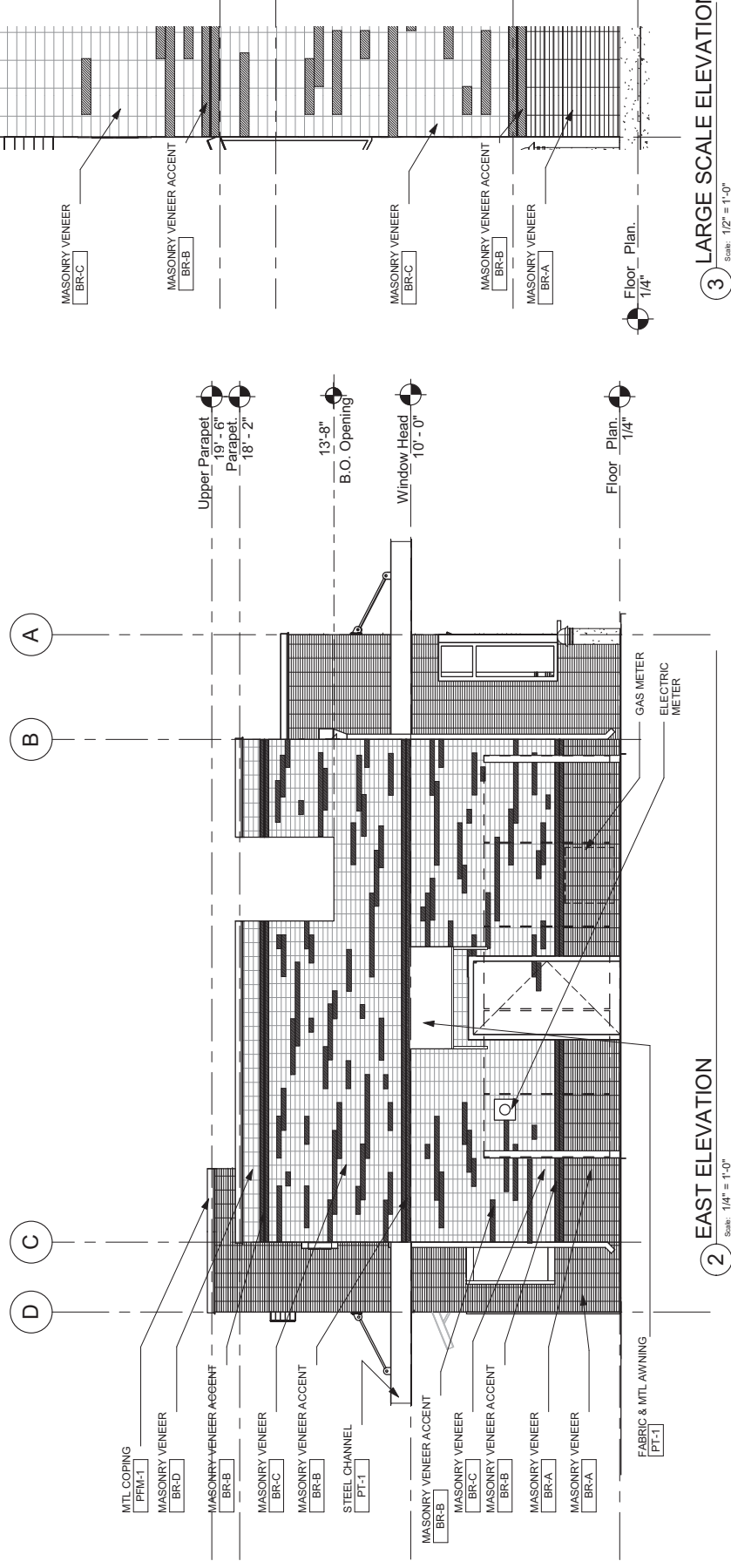
Sheet Title:
**EXTERIOR
ELEVATIONS**
Scale: As indicated

Sheet Number:
A-2001

Design Development Only - Not Intended for Construction



1 SOUTH ELEVATION
Scale: 1/4" = 1'-0"



2 EAST ELEVATION
Scale: 1/4" = 1'-0"

3 LARGE SCALE ELEVATION
Scale: 1/2" = 1'-0"

MATERIAL LEGEND (EXAMPLE SPEC.)

MASONRY:	MANF.	COLOR:	DESCRIPTION:
BR-A	MUTURAL MATERIALS	DARK - EBONY MISSION	BOTTOM BAND
BR-B	MUTURAL MATERIALS	MEDIUM - REDONDO GRAY - SMOOTH	INTERMEDIATE COURSES
BR-C	MUTURAL MATERIALS	80/20 BLEND PEWTER MISSION & REDONDO GRAY	MAIN FIELD
BR-D	MUTURAL MATERIALS	LIGHT - PEWTER MISSION	TOP BAND
PAINT:	MANF.	COLOR:	DESCRIPTION:
MTL-1	TBD	TO MATCH PFM-1	AWNINGS
PT-1	TBD	BLACK GALV. METAL PAINTED	
METAL:	MANF.	COLOR:	DESCRIPTION:
PFM-1	TBD	DARK GRAY	PREFINISHED FOR METAL COPING
STOREFRONT:	MANF.	COLOR:	DESCRIPTION:
SF-1	TBD	BLACK OR DARK BRONZE	STOREFRONT FRAMING

MATERIAL NOTES:
1. LOCAL AVAILABILITY & REQUIREMENTS GOVERN MATERIAL SELECTION.
2. GOUT COLOR TO MATCH DARKEST BRICK OF SECTION.



Starbucks Coffee Company
 2401 Utah Avenue South
 Seattle, Washington 98134
 (206) 318-1375

These Drawings and Specifications are confidential and shall remain the property of Starbucks Corporation, which is the owner of the copyright in this work. They shall not be reproduced (in whole or in part), shared with third parties or used in any manner on other projects or extensions to this project without the prior written consent of Starbucks Coffee Company. The information and specifications are intended to express Design Intent for a prototypical Starbucks store which is subject to change at anytime and do not reflect actual site conditions. Neither party shall have any obligation to update or amend these drawings or specifications until a written agreement is fully executed by both parties.

Architect of Record
 This drawing is a Design Development Document. Site specific modifications made under the responsible charge of the Architect and/or Engineer shall be noted on this drawing. No using this document for Bidding, Permitting, or Construction.

Rev	Date	By	Description

Project Name: **DESIGN DEVELOPMENT SINGLE TENANT BUILDING PROTOTYPE SET V3.1**

Store #:
 Project #:
 Concept:
 Palette:
 Issue Date:
 Design Manager:
 LEED® AP:
 Production Designer:
 Checked by:

Sheet Title: **EXTERIOR ELEVATIONS**
 Scale: 1/4" = 1'-0"

Sheet Number: **A-2002**

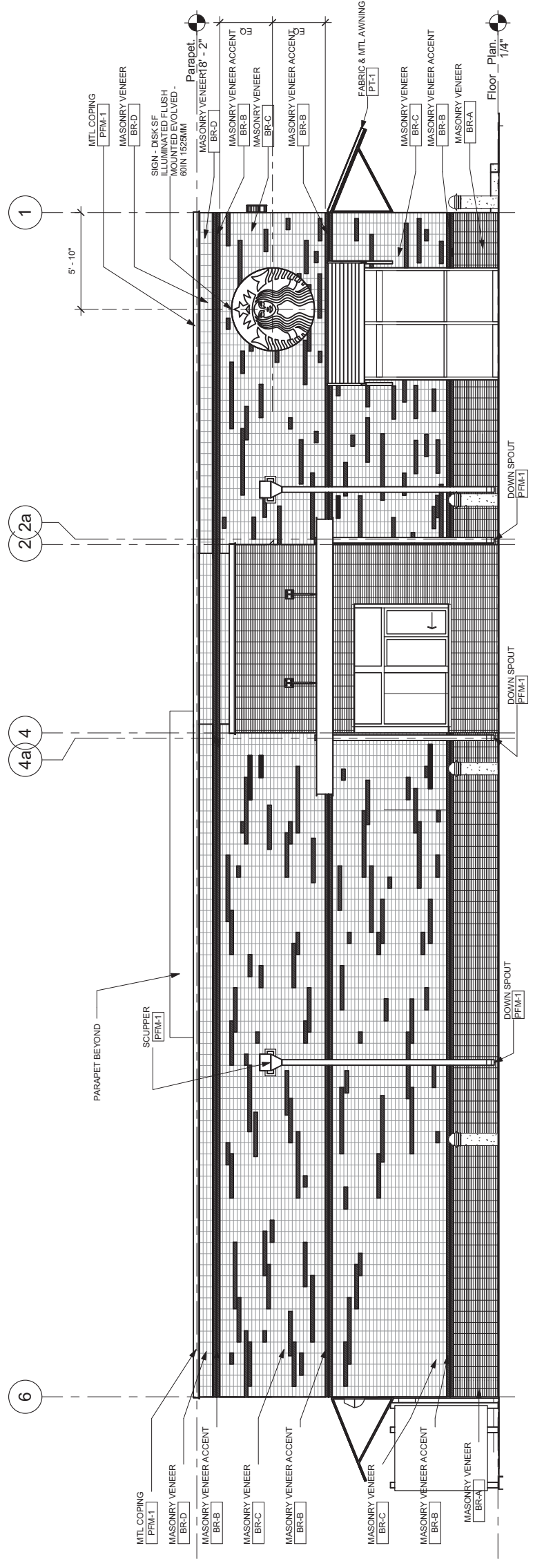
Design Development Only - Not Intended for Construction

EXTERIOR ELEVATION NOTES

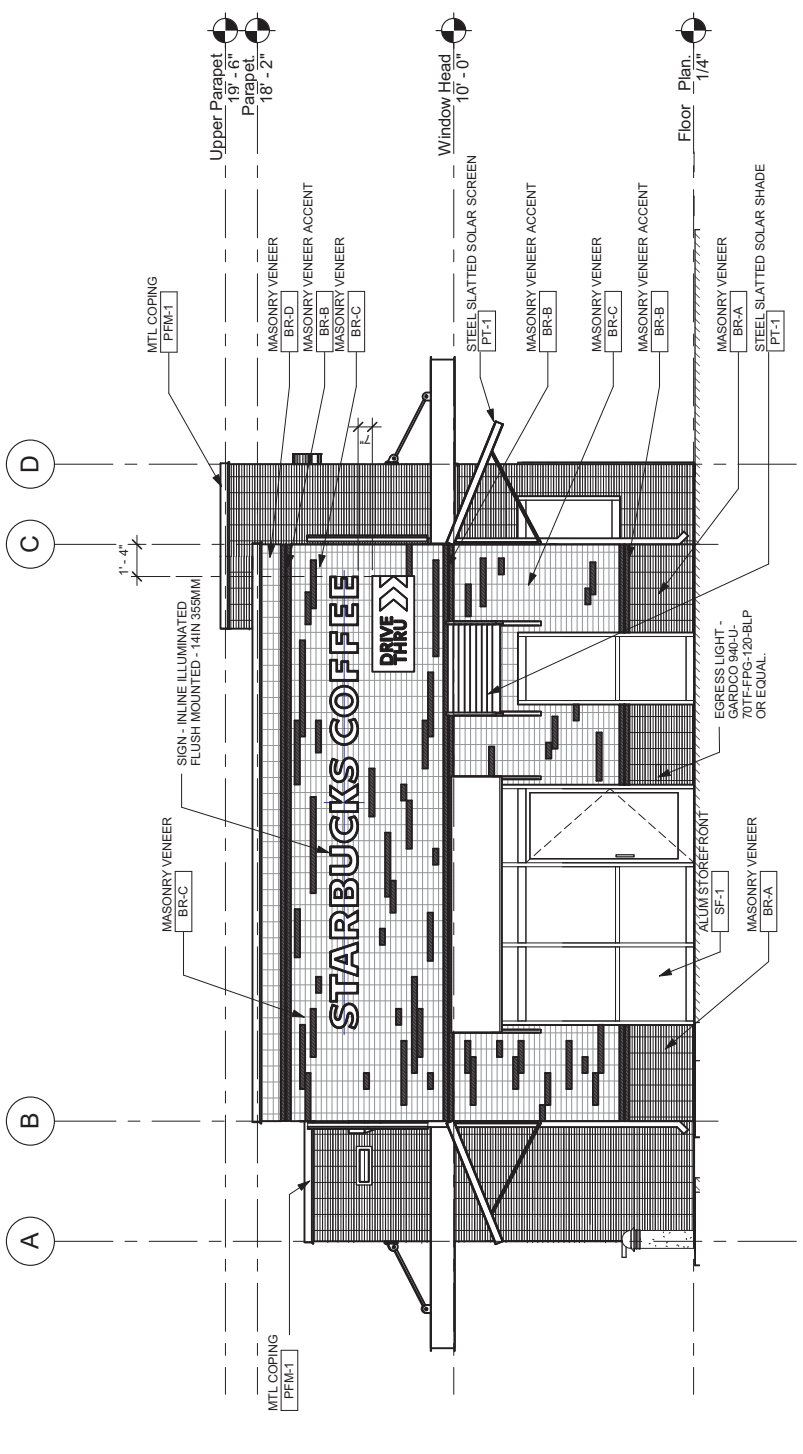
- A. GENERAL CONTRACTOR TO COORDINATE AND SCHEDULE SIGNAGE INSTALLATION WITH THE SIGNAGE CONTRACTOR PROVIDING A MINIMUM SCHEDULING NOTICE OF 4 WEEKS AND 1 WEEK PRIOR TO SCHEDULED DATE OF INSTALLATION. STARBUCKS CONSTRUCTION MANAGER TO PROVIDE GENERAL CONTRACTOR WITH SIGNAGE CONTRACTOR CONTACT INFORMATION.
- B. GENERAL CONTRACTOR SHALL COORDINATE WITH ELECTRICAL CONTRACTOR TO FURNISH AND INSTALL ELECTRICAL CIRCUITS INCLUDING ALL CONDUIT, WIRE, CONNECTIONS, AND BREAKER AT PANEL BOARD NECESSARY TO SERVE SIGNAGE.
- C. GENERAL CONTRACTOR TO PROVIDE FIRE TREATED WOOD STUD BLOCKING, OR EQUIVALENT TO SUPPORT SIGNAGE.
- D. SIGNAGE CONTRACTOR SHALL VERIFY SIZE AND LOCATION OF ANY AND ALL ALLOWABLE MONUMENT OR POLE SIGNAGE WITH LANDLORD AND PROVIDE SHOP DRAWING(S) PRIOR TO FABRICATION TO STARBUCKS DESIGNER FOR APPROVAL.
- E. SIGNAGE CONTRACTOR TO INSTALL SIGNAGE IN COMPLIANCE WITH LOCAL CODES AND OBTAIN PERMIT AND LANDLORD APPROVAL.
- F. SIGNAGE CONTRACTOR TO SUPPLY SHOP DRAWINGS AND DETAILS FOR SIGNAGE AND TO THE GENERAL CONTRACTOR AS NEEDED. GENERAL CONTRACTOR TO NOTIFY STARBUCKS CONSTRUCTION MANAGER IMMEDIATELY IF SHOP DRAWINGS OR INSTALLATION IS IN DISCREPANCY WITH STARBUCKS ARCHITECTURAL DRAWINGS.
- G. GENERAL CONTRACTOR TO CLEAN, PATCH AND REPAIR EXISTING EXTERIOR AS REQUIRED.
- H. SEE SCHEDULE SHEETS FOR SCHEDULES.

SHEET NOTES

- 1. PROVIDE 3" (75MM) HIGH BLACK ACRYLIC STORE ADDRESS ON GLAZING FACING STREET.



1 NORTH ELEVATION
 Scale: 1/4" = 1'-0"



2 WEST ELEVATION
 Scale: 1/4" = 1'-0"

MATERIAL LEGEND (EXAMPLE SPEC.)

MANUFACTURER	MATERIAL	COLOR	DESCRIPTION
BR-A	MUTURAL MATERIALS	DARK - EBONY MISSION	BOTTOM BAND
BR-B	MUTURAL MATERIALS	MEDIUM - REDONDO GRAY - SMOOTH	INTERMEDIATE COURSES
BR-C	MUTURAL MATERIALS	80/20 BLEND 'PEWTER MISSION' & REDONDO GRAY	MAIN FIELD
BR-D	MUTURAL MATERIALS	LIGHT - 'PEWTER MISSION'	TOP BAND
MANF.			DESCRIPTION:
MTL-1	TBD	TO MATCH PFM-1	AWNINGS
PT-1	TBD	BLACK GALV. METAL PAINTED	
MANF.			DESCRIPTION:
PFM-1	TBD	DARK GRAY	PREFINISHED FOR METAL COPING
MANF.			DESCRIPTION:
SF-1	TBD	BLACK OR DARK BRONZE	STOREFRONT FRAMING

MATERIAL NOTES:
 1. LOCAL AVAILABILITY & REQUIREMENTS GOVERN MATERIAL SELECTION.
 2. GOUT COLOR TO MATCH DARKEST BRICK OF SECTION.