



Louisville Metro Public Works & Assets

Communications Franchise Application

Applicant Information

Applicant Name: Cellco Partnership d/b/a Verizon Wireless
(Complete Legal Name as registered with the Kentucky Secretary of State)

Address: One Verizon Way

City: Basking Ridge State: NJ Zip Code: 07920

E-mail Address: Doug Venable - Project Manager douglas.venable@verizonwireless.com

Phone Number: (908) 559-2001 Fax Number: _____

Local Representative Information

Applicant Name: Bianca Zaklikowski

Address: 2241 Holloway Road

City: Louisville State: KY Zip Code: 40299

E-mail Address: bianca.zaklikowski@verizonwireless.com

Phone Number: 317-296-1841 Fax Number: _____

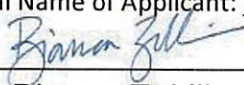
Emergency Contact Information: 800-264-2260

Certification

Applicant agrees to be bound by all provision of the Franchise and agrees to obtain all application permits and authorizations prior to constructing, installing or operating a System in the right-of-way.

Applicant hereby certifies that the information provided by the applicant is true and correct and that the person signing on behalf of the applicant is authorized to do so. Applicant further acknowledges and certifies that it shall be responsible to certify to Louisville Metro any material changes to the information provided in the completed application during the terms of any Franchise.

Complete Legal Name of Applicant: Bianca Zaklikowski

Signature: 

Printed Name: Bianca Zaklikowski

Title: Engineer IV - Agreements

Date: 2/28/19

Louisville Metro Franchise License Area Planned Small Cell Nodes - 2019

CellCo Partnership d/b/a Verizon Wireless

Description of proposed system:

Verizon Wireless intends to deploy, on the backbone of our fiber-optic network, a small cell network that will bring the fifth generation of wireless technology - 5G - to the City of Louisville. We have shown 379 proposed nodes, though we realize some locations will fall out or become unfeasible due to location, existing infrastructure or other challenges, our end goal is 130 5G nodes in the Metro area (with 20 nodes across the river in Jeffersonville and Clarksville). Each of these small cell locations will be connected to the Verizon network via fiber. Approximately 20% of planned nodes will utilize existing dark fiber from carriers like Extenet, Zayo or Crown Castle; the remaining 80% will be connected to Verizon-owned OneFiber-provided by MCIMetroNet who has a franchise agreement in place with the City.

Small cells with 5G technology will be deployed primarily in areas of dense population - both where people work and live. The 2019 Louisville deployment consists of nodes in Metro Council Districts 4, 6, and 15. Nodes will mostly be placed on busy thoroughfares like Jefferson Street, Market Street, Broadway, Oak Street and Loganfield Avenue.

Our 2019 Louisville small cell deployment seeks first and foremost to co-locate on existing infrastructure owned by LG&E, then to set new utility or light poles. A Joint Use Agreement has been executed with LG&E and KU. In areas where there is no suitable vertical asset, or areas where aesthetics are paramount, Verizon Wireless will work with Louisville Metro to ensure designs and locations are appropriate. We can partner with the City regarding Smart Cities solutions, decorative poles and shrouding and concealment options.

Verizon and its contractors will operate as good community stewards, working to minimize public inconvenience. This includes planning construction and installation activities around major and community events, Public Works planned paving efforts, & proper and appropriate notification to surrounding property owners as is required for right-of-way permits.



Note: This is a PRELIMINARY VIEW only

Final design not yet completed, thus node locations subject to change.
Confidentiality Statement: Verizon Wireless Confidential and Proprietary. May Contain Trade Secrets, or Sensitive Commercial or Financial Information. Any Unauthorized Review, Use, Disclosure, Distribution, or Copying is Prohibited Data Source: VZW | Map Created: 12/16/18 | Created by: Bianca Zaklikowski



Louisville Metro Franchise License Area Planned Small Cell Nodes - 2019

All work done within the rights-of-way shall conform to the Louisville Metro Public Work and Assets Utility Policy - Latest Addition.

All small cell antenna and related equipment will conform to applicable FCC standards and requirements. No ground furniture (Cabinets and related equipment), instead all equipment will be located on the pole.



Note: This is a PRELIMINARY VIEW only

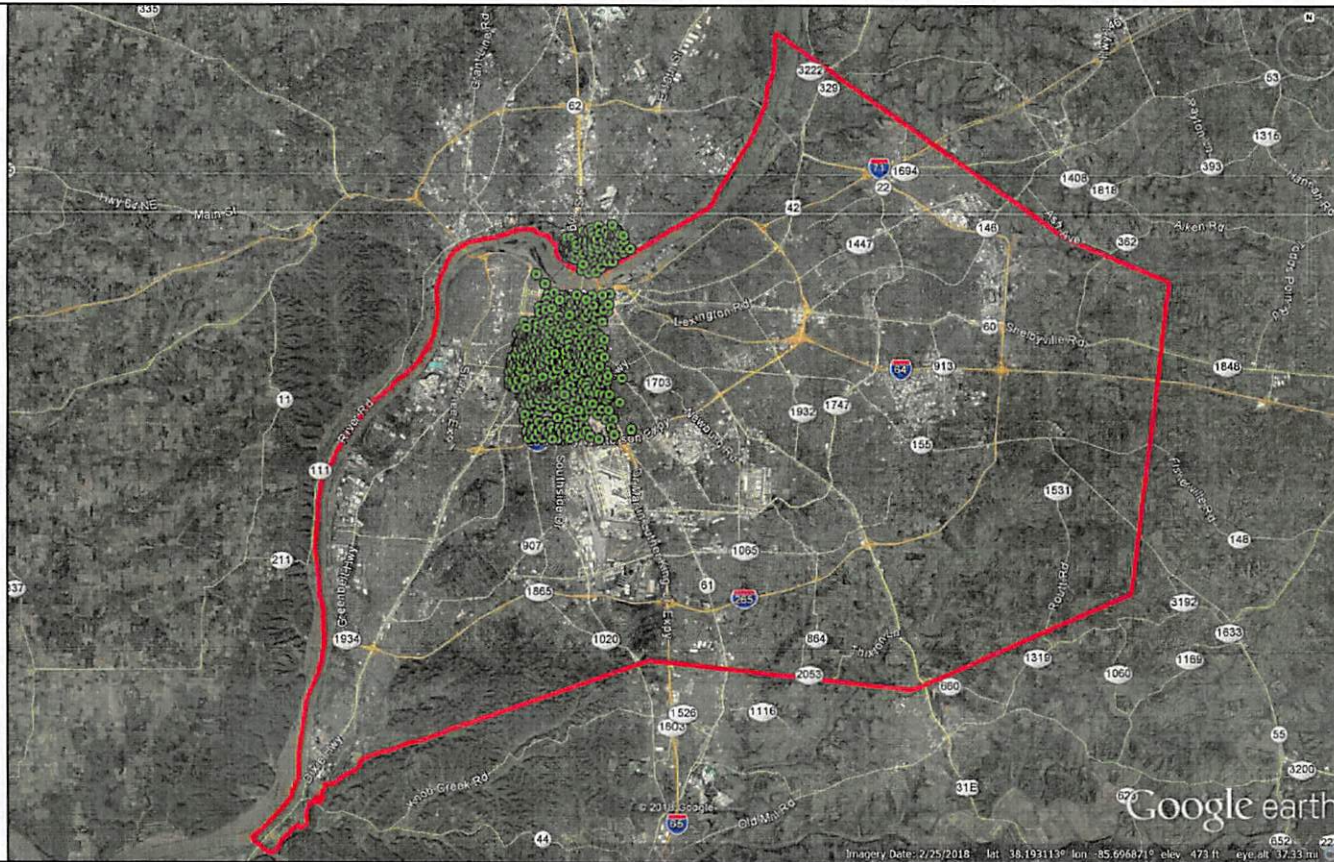
Final design not yet completed, thus node locations subject to change.

Confidentiality Statement: Verizon Wireless Confidential and Proprietary. May Contain Trade Secrets, or Sensitive Commercial or Financial Information. Any Unauthorized Review, Use, Disclosure, Distribution, or Copying is Prohibited Data Source: VZW | Map Created: 12/16/18 | Created by: Bianca Zaklikowski



Louisville Metro Franchise License Area Planned Small Cell Site Locations

MCI metro Access Transmission Services Corp. d/b/a Verizon Access Transmission Services ("Verizon")



- Small Cell Location
- Metro Boundary



Note: This is a PRELIMINARY VIEW only

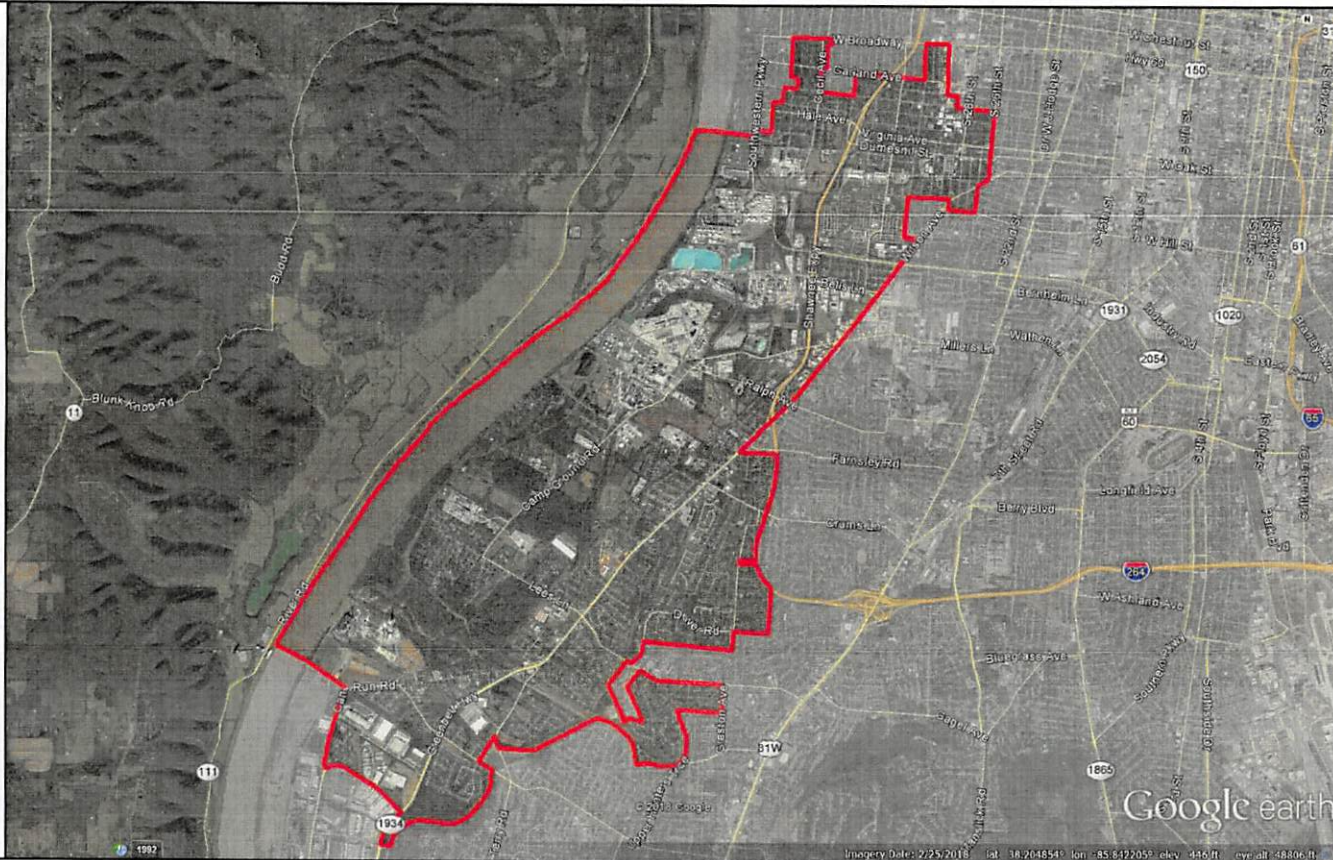
Final Design not yet completed, thus locations are subject to change.

Confidentiality Statement: Verizon/MCI metro Confidential and Proprietary. May Contain Trade Secrets, or Sensitive Commercial or Financial Information. Any Unauthorized Review, Use, Disclosure, Distribution, or Copying is Prohibited
Data Source: VZB | Projection: HLD_328_LOU | Map Created 12/14/18 | Map Created by: Corie Ratts



Louisville Metro Council District 1

MCImetro Access Transmission Services Corp. d/b/a Verizon Access Transmission Services ("Verizon")



- Small Cell Location
- District Boundary



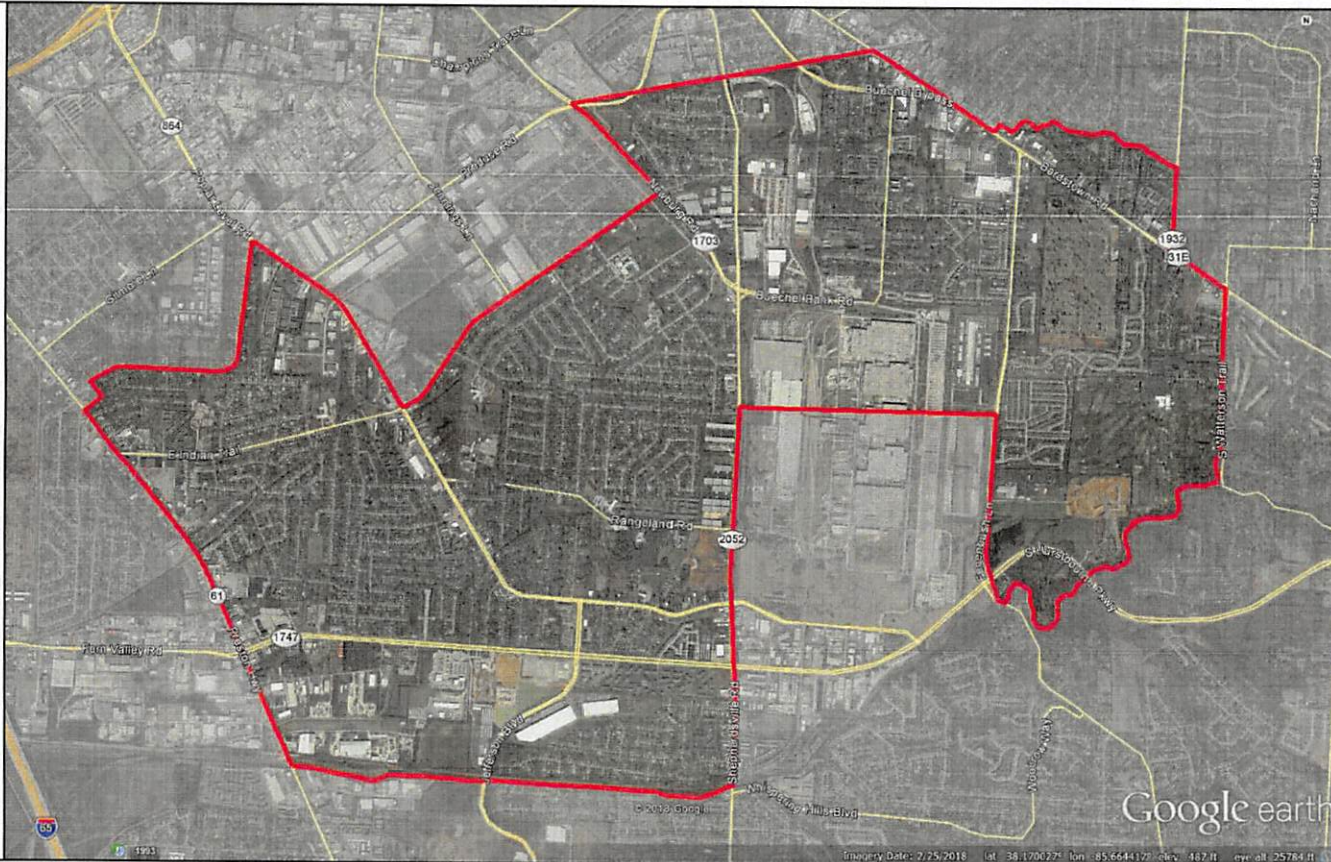
Note: This is a PRELIMINARY VIEW only

Final Design not yet completed, thus locations are subject to change.
Confidentiality Statement: Verizon/MCImetro Confidential and Proprietary. May Contain Trade Secrets, or Sensitive Commercial or Financial Information. Any Unauthorized Review, Use, Disclosure, Distribution, or Copying is Prohibited
Data Source: VZB | Projection: HLD_328_LOU | Map Created 12/14/18 | Map Created by: Corie Ratts



Louisville Metro Council District 2

MCImetro Access Transmission Services Corp. d/b/a Verizon Access Transmission Services ("Verizon")



- Small Cell Location
- District Boundary



Note: This is a PRELIMINARY VIEW only

Final Design not yet completed, thus locations are subject to change.

Confidentiality Statement: Verizon/MCImetro Confidential and Proprietary. May Contain Trade Secrets, or Sensitive Commercial or Financial Information. Any Unauthorized Review, Use, Disclosure, Distribution, or Copying is Prohibited
Data Source: VZB | Projection: HLD_328_LOU | Map Created 12/14/18 | Map Created by: Corie Ratts



Louisville Metro Council District 3

MCImetro Access Transmission Services Corp. d/b/a Verizon Access Transmission Services ("Verizon")



- Small Cell Location
- District Boundary



Note: This is a PRELIMINARY VIEW only

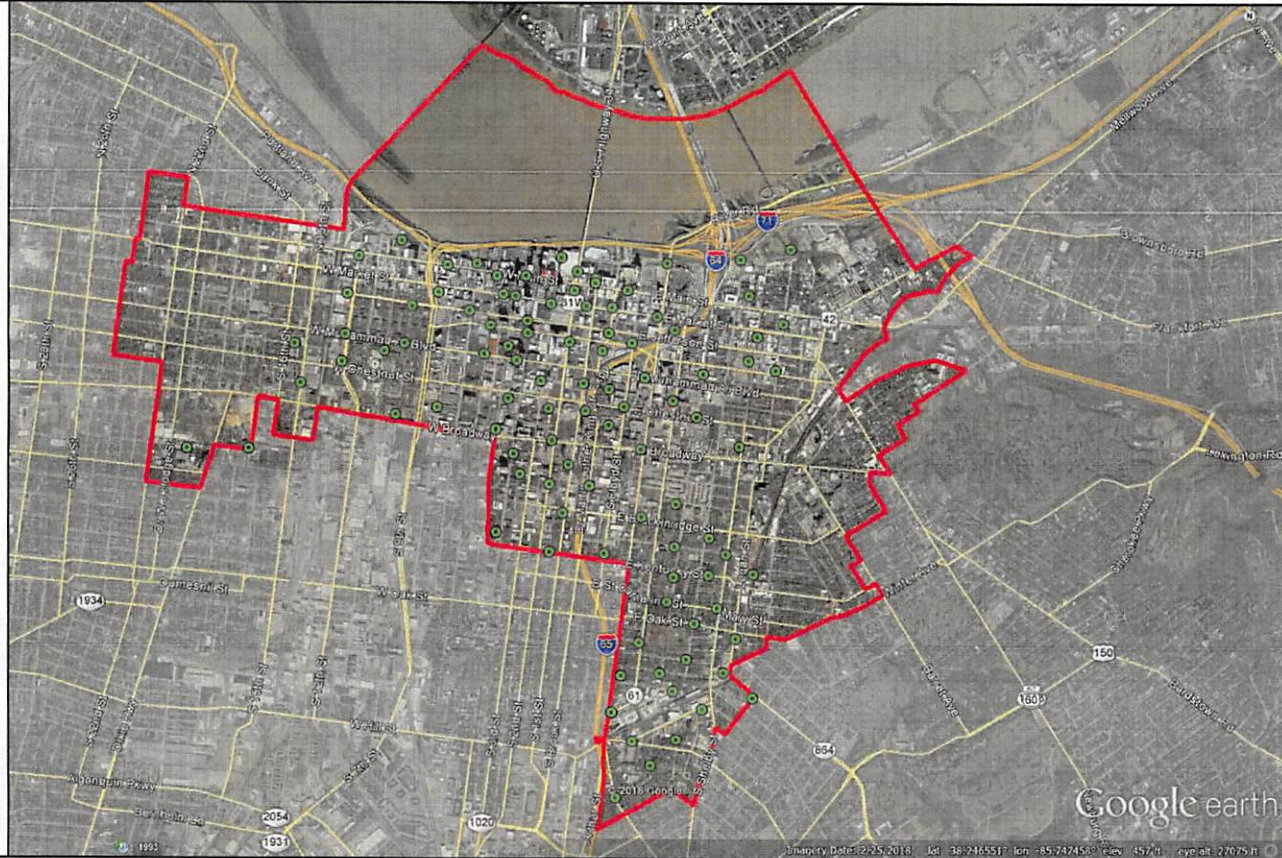
Final Design not yet completed, thus locations are subject to change.

Confidentiality Statement: Verizon/MCImetro Confidential and Proprietary. May Contain Trade Secrets, or Sensitive Commercial or Financial Information. Any Unauthorized Review, Use, Disclosure, Distribution, or Copying is Prohibited
Data Source: VZB | Projection: HLD_328_LOU | Map Created 12/14/18 | Map Created by: Corie Ratts



Louisville Metro Council District 4

MCI metro Access Transmission Services Corp. d/b/a Verizon Access Transmission Services ("Verizon")



- Small Cell Location
- District Boundary



Note: This is a PRELIMINARY VIEW only

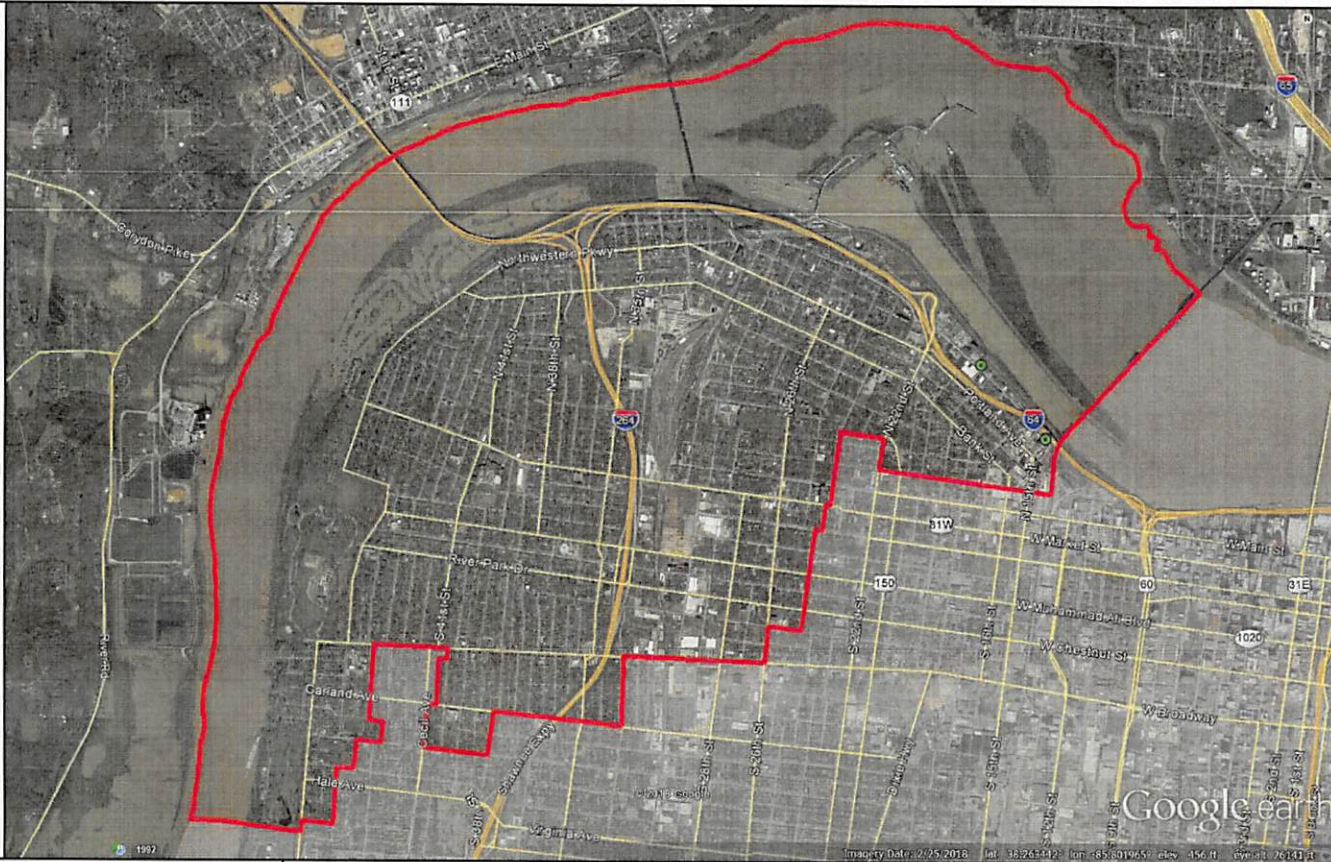
Final Design not yet completed, thus locations are subject to change.

Confidentiality Statement: Verizon/MCI metro Confidential and Proprietary. May Contain Trade Secrets, or Sensitive Commercial or Financial Information. Any Unauthorized Review, Use, Disclosure, Distribution, or Copying is Prohibited
Data Source: VZB | Projection: HLD_328_LOU | Map Created 12/14/18 | Map Created by: Corie Ratts



Louisville Metro Council District 5

MCI metro Access Transmission Services Corp. d/b/a Verizon Access Transmission Services ("Verizon")



- Small Cell Location
- District Boundary



Note: This is a PRELIMINARY VIEW only

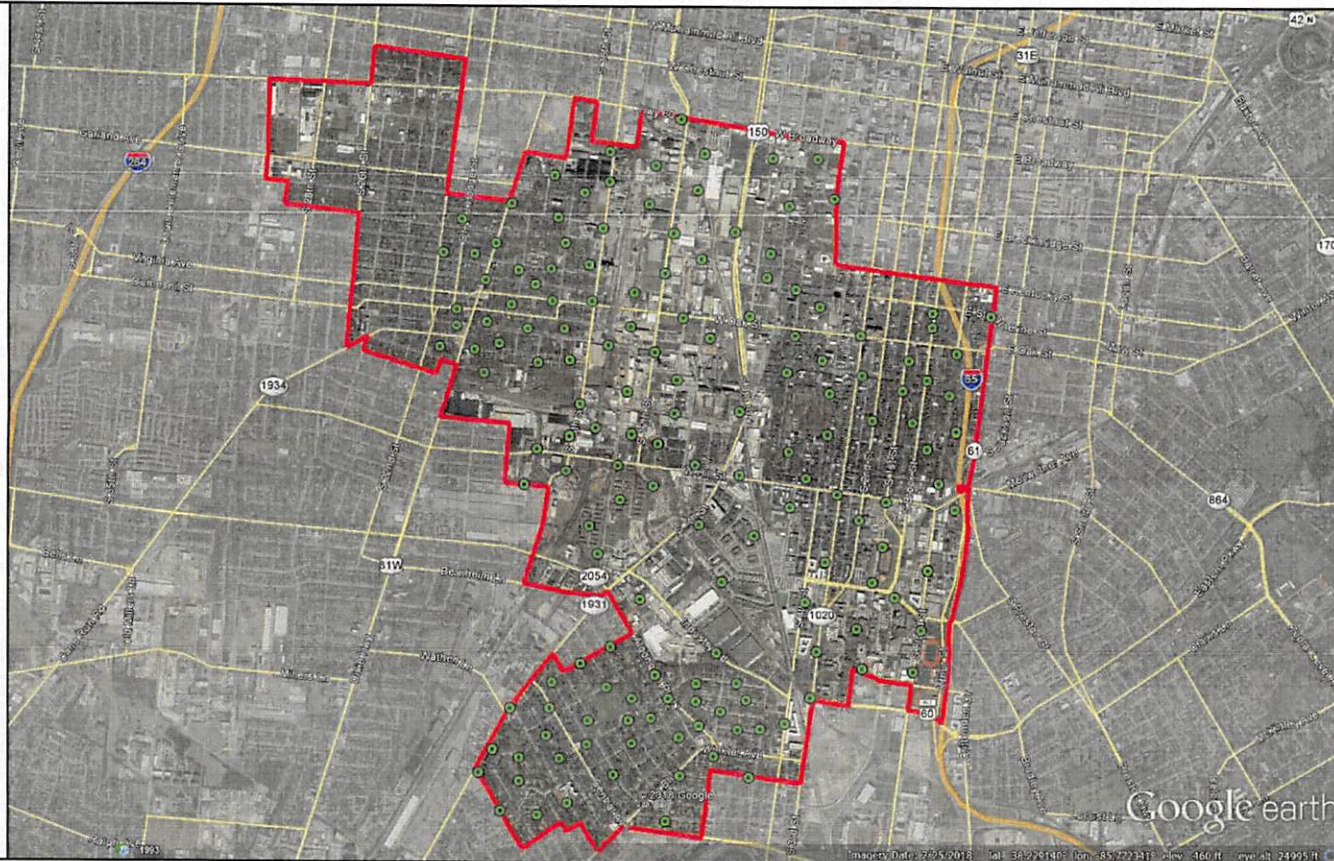
Final Design not yet completed, thus locations are subject to change.

Confidentiality Statement: Verizon/MCI metro Confidential and Proprietary. May Contain Trade Secrets, or Sensitive Commercial or Financial Information. Any Unauthorized Review, Use, Disclosure, Distribution, or Copying is Prohibited
Data Source: VZB | Projection: HLD_328_LOU | Map Created 12/14/18 | Map Created by: Corie Ratts



Louisville Metro Council District 6

MCImetro Access Transmission Services Corp. d/b/a Verizon Access Transmission Services ("Verizon")



- Small Cell Location
- District Boundary



Note: This is a PRELIMINARY VIEW only

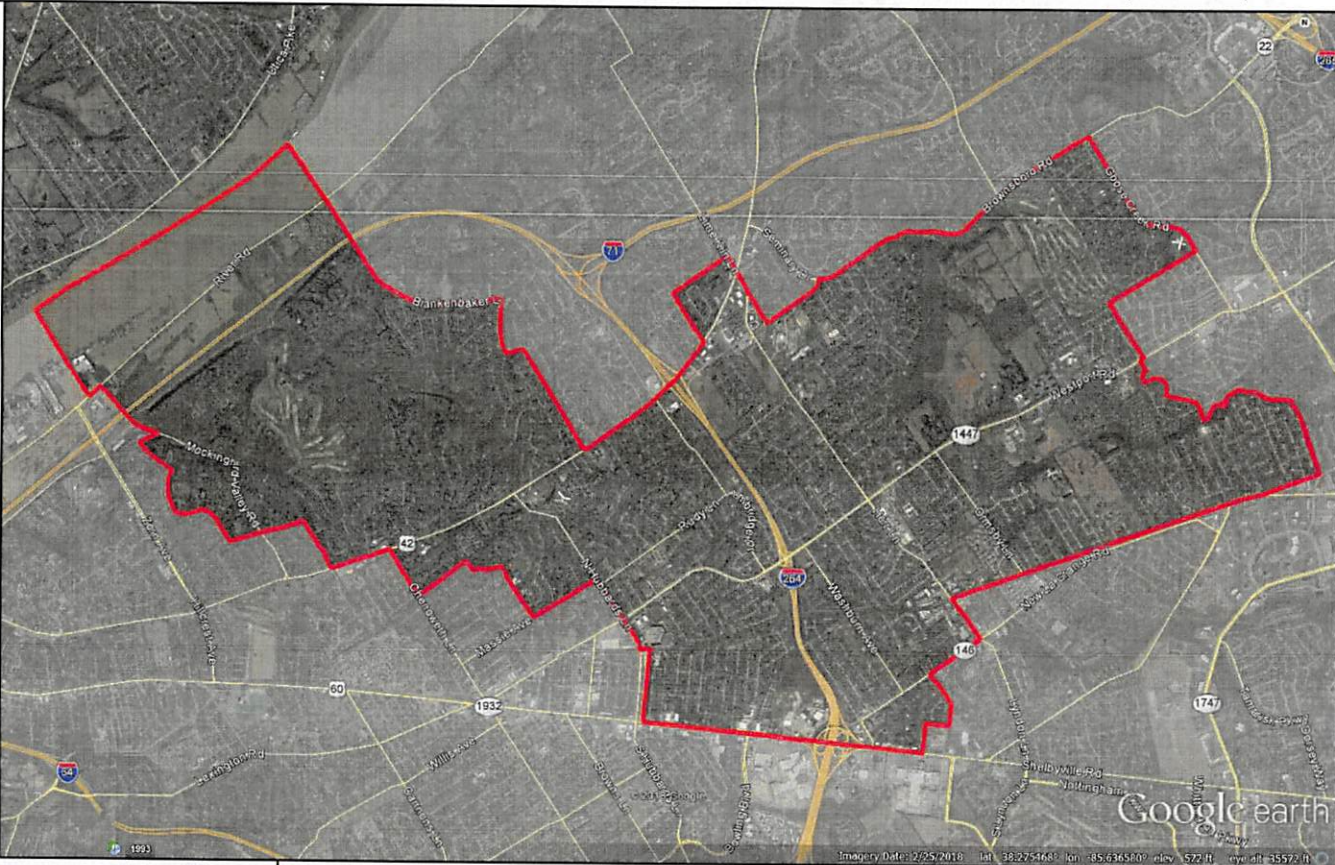
Final Design not yet completed, thus locations are subject to change.

Confidentiality Statement: Verizon/MCImetro Confidential and Proprietary. May Contain Trade Secrets, or Sensitive Commercial or Financial Information. Any Unauthorized Review, Use, Disclosure, Distribution, or Copying is Prohibited
Data Source: VZB | Projection: HLD_328_LOU | Map Created 12/14/18 | Map Created by: Corie Ratts



Louisville Metro Council District 7

MCI metro Access Transmission Services Corp. d/b/a Verizon Access Transmission Services ("Verizon")



- Small Cell Location
- District Boundary



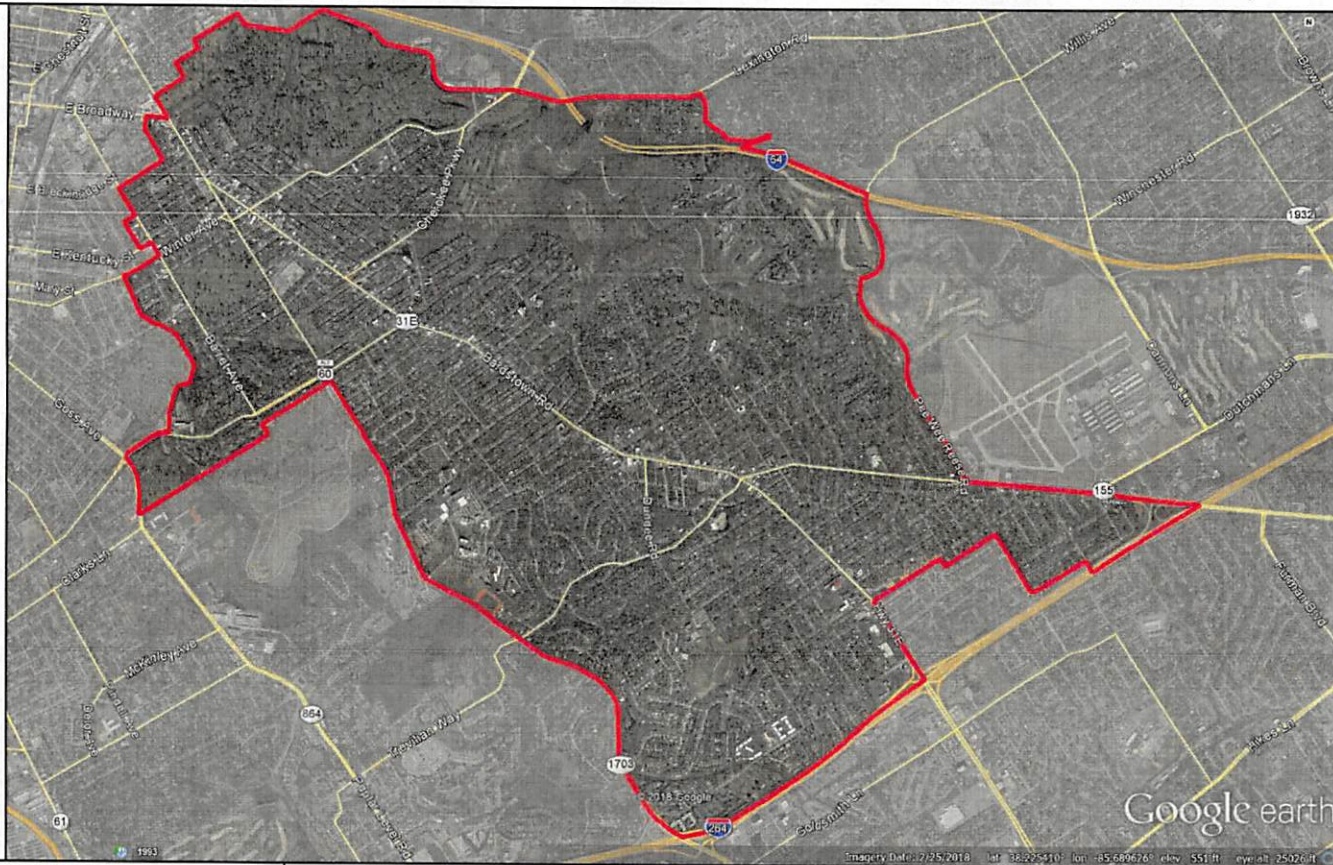
Note: This is a PRELIMINARY VIEW only

Final Design not yet completed, thus locations are subject to change.
Confidentiality Statement: Verizon/MCI metro Confidential and Proprietary. May Contain Trade Secrets, or Sensitive Commercial or Financial Information. Any Unauthorized Review, Use, Disclosure, Distribution, or Copying is Prohibited
Data Source: VZB | Projection: HLD_328_LOU | Map Created 12/14/18 | Map Created by: Corie Ratts



Louisville Metro Council District 8

MCI metro Access Transmission Services Corp. d/b/a Verizon Access Transmission Services ("Verizon")



- Small Cell Location
- District Boundary



Note: This is a PRELIMINARY VIEW only

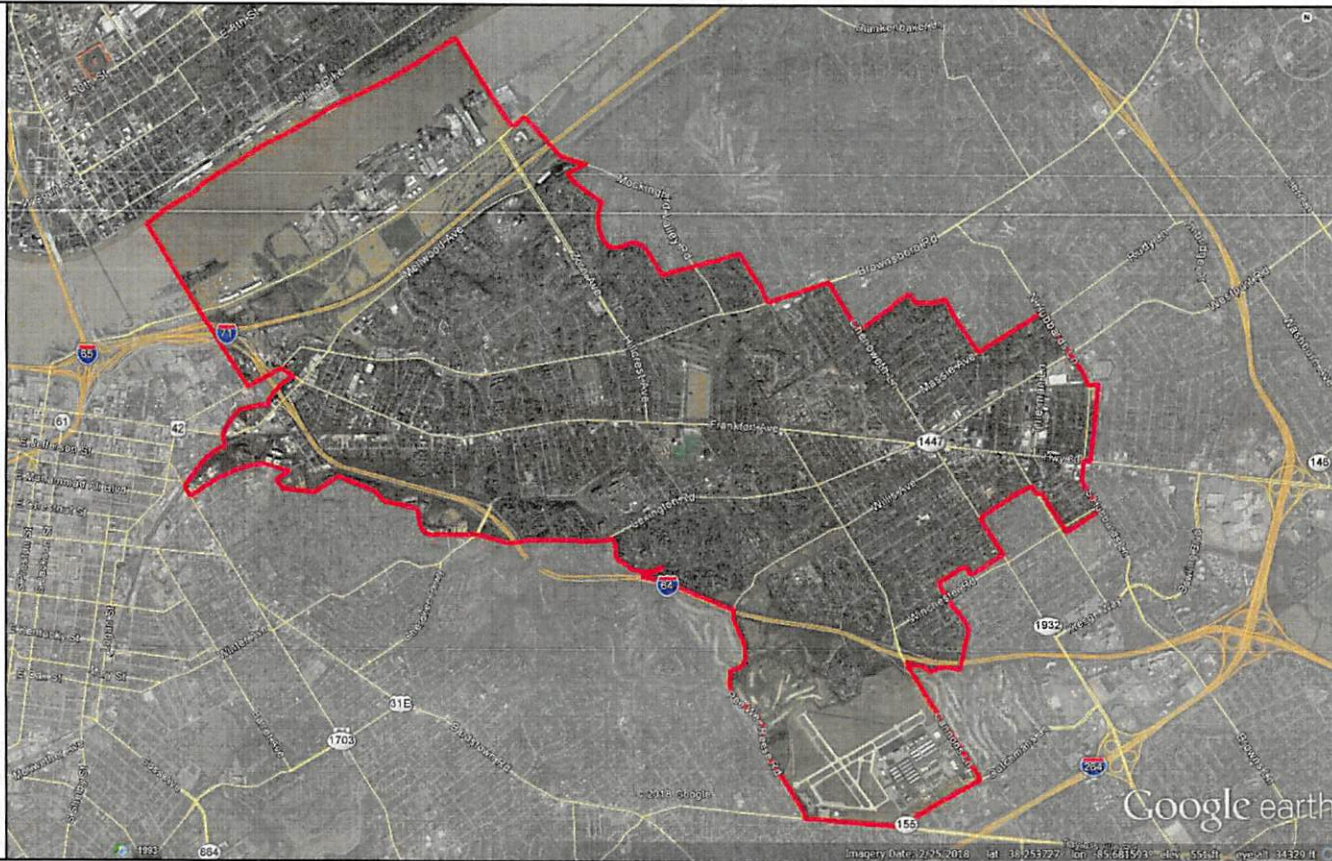
Final Design not yet completed, thus locations are subject to change.

Confidentiality Statement: Verizon/MCI metro Confidential and Proprietary. May Contain Trade Secrets, or Sensitive Commercial or Financial Information. Any Unauthorized Review, Use, Disclosure, Distribution, or Copying is Prohibited
Data Source: VZB | Projection: HLD_328_10U | Map Created 12/14/18 | Map Created by: Corie Ratts



Louisville Metro Council District 9

MCI metro Access Transmission Services Corp. d/b/a Verizon Access Transmission Services ("Verizon")



- Small Cell Location
- District Boundary



Note: This is a PRELIMINARY VIEW only

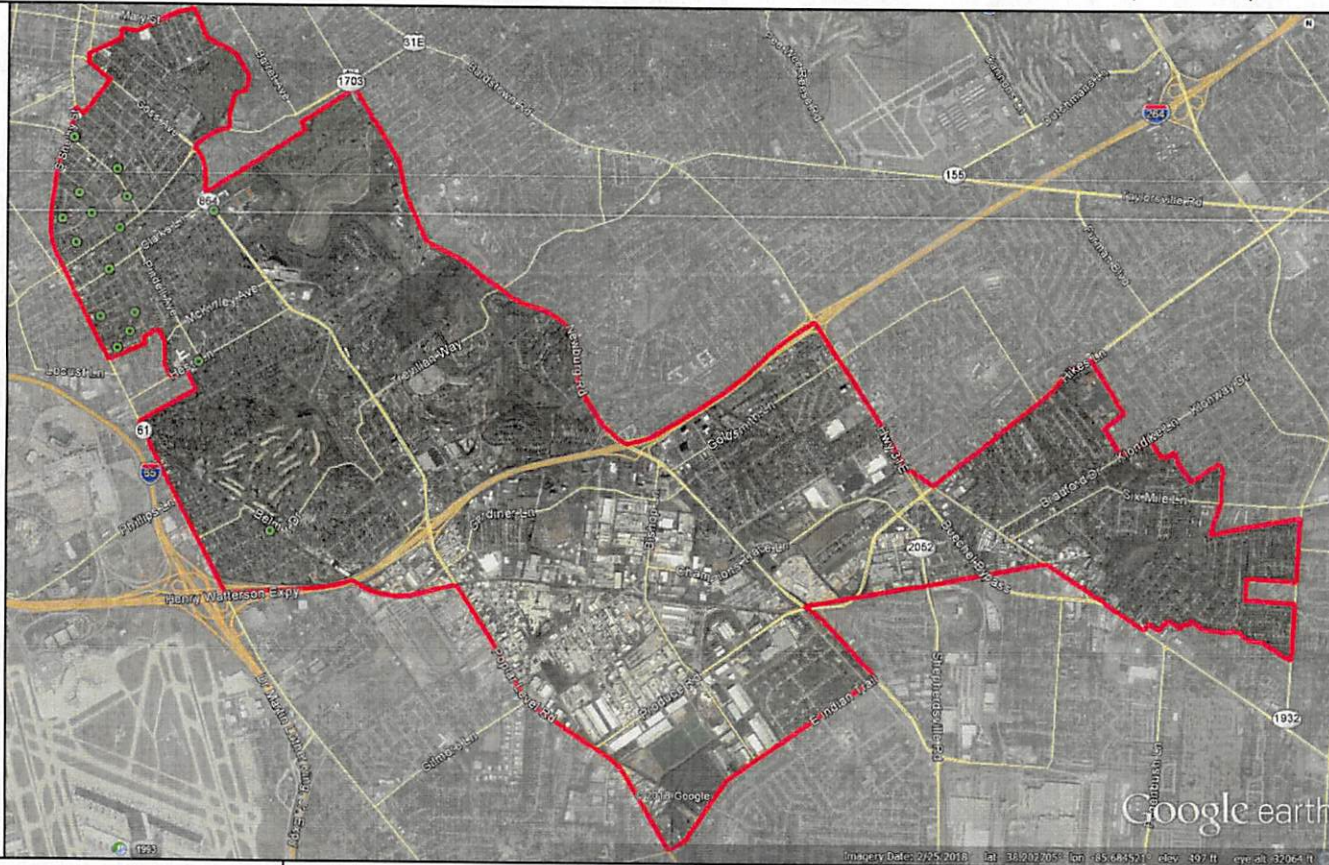
Final Design not yet completed, thus locations are subject to change.

Confidentiality Statement: Verizon/MCI metro Confidential and Proprietary. May Contain Trade Secrets, or Sensitive Commercial or Financial Information. Any Unauthorized Review, Use, Disclosure, Distribution, or Copying is Prohibited
Data Source: VZB | Projection: HLD_328_LOU | Map Created 12/14/18 | Map Created by: Corie Ratts



Louisville Metro Council District 10

MCImetro Access Transmission Services Corp. d/b/a Verizon Access Transmission Services ("Verizon")



- Small Cell Location
- District Boundary



Note: This is a PRELIMINARY VIEW only

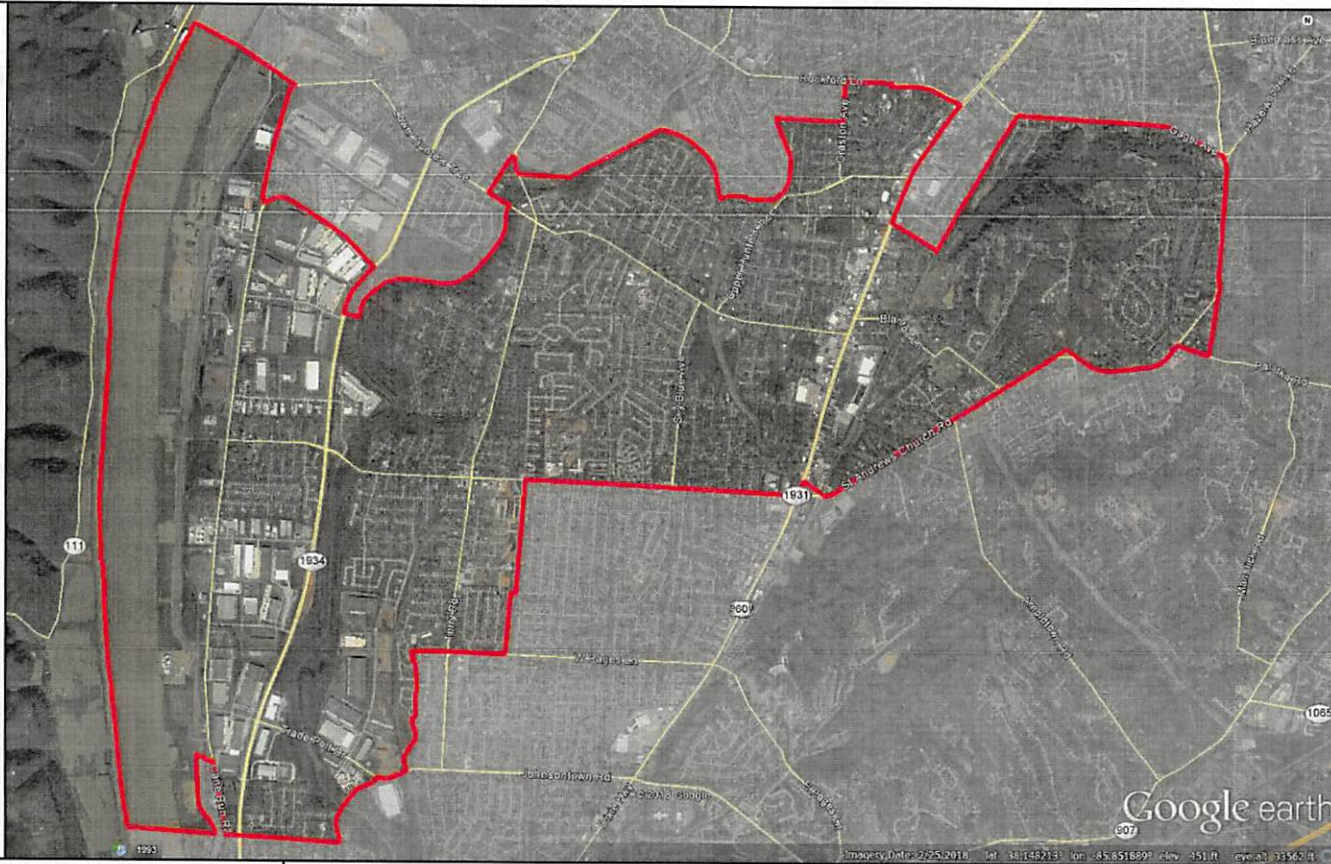
Final Design not yet completed, thus locations are subject to change.

Confidentiality Statement: Verizon/MCImetro Confidential and Proprietary. May Contain Trade Secrets, or Sensitive Commercial or Financial Information. Any Unauthorized Review, Use, Disclosure, Distribution, or Copying is Prohibited
Data Source: VZB | Projection: HLD_328_LOU | Map Created 12/14/18 | Map Created by: Corie Ratts



Louisville Metro Council District 12

MCI metro Access Transmission Services Corp. d/b/a Verizon Access Transmission Services ("Verizon")



- Small Cell Location
- District Boundary



Note: This is a PRELIMINARY VIEW only

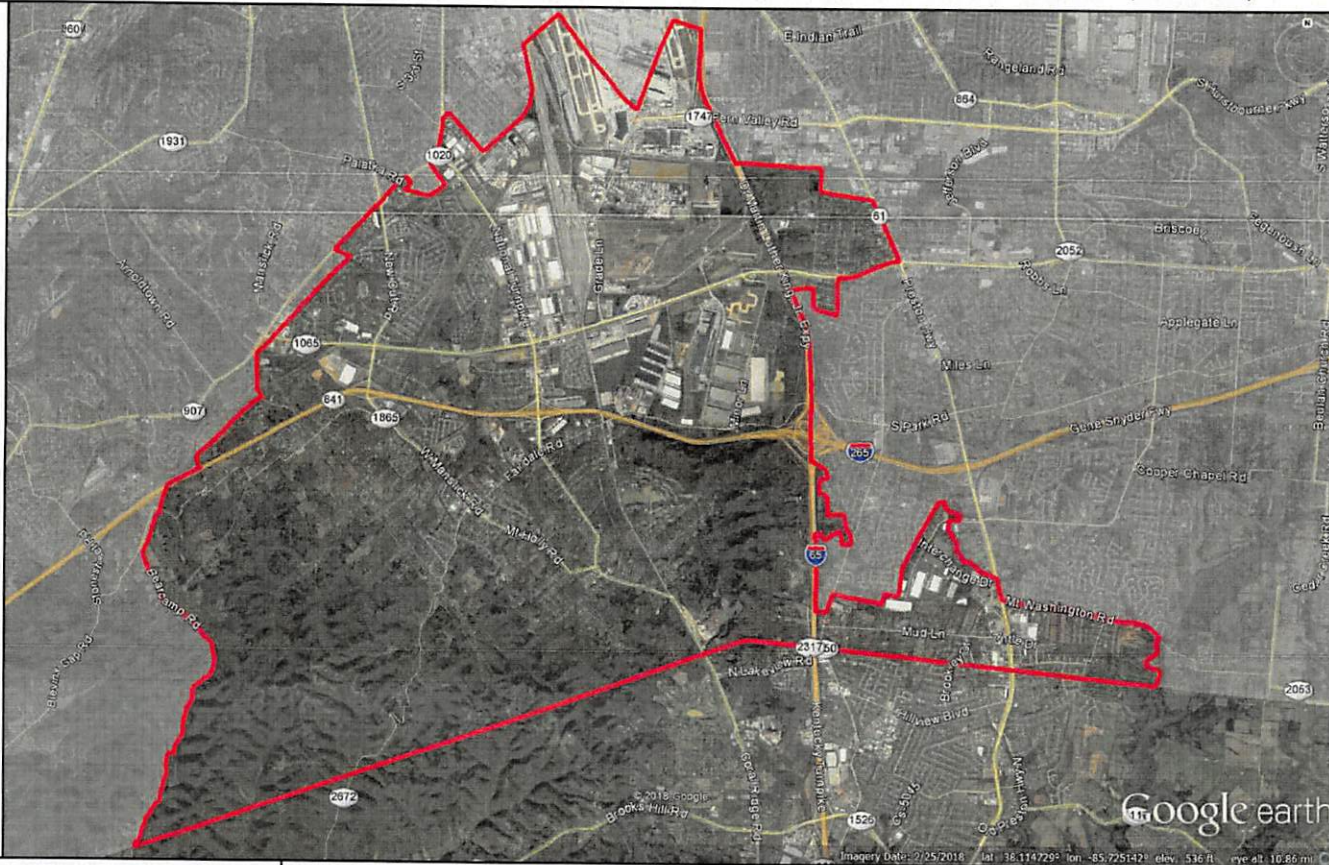
Final Design not yet completed, thus locations are subject to change.

Confidentiality Statement: Verizon/MCI metro Confidential and Proprietary. May Contain Trade Secrets, or Sensitive Commercial or Financial Information. Any Unauthorized Review, Use, Disclosure, Distribution, or Copying is Prohibited
Data Source: VZB | Projection: HLD_328_LOU | Map Created 12/14/18 | Map Created by: Corie Ratts



Louisville Metro Council District 13

MCI metro Access Transmission Services Corp. d/b/a Verizon Access Transmission Services ("Verizon")



- Small Cell Location
- District Boundary



Note: This is a PRELIMINARY VIEW only

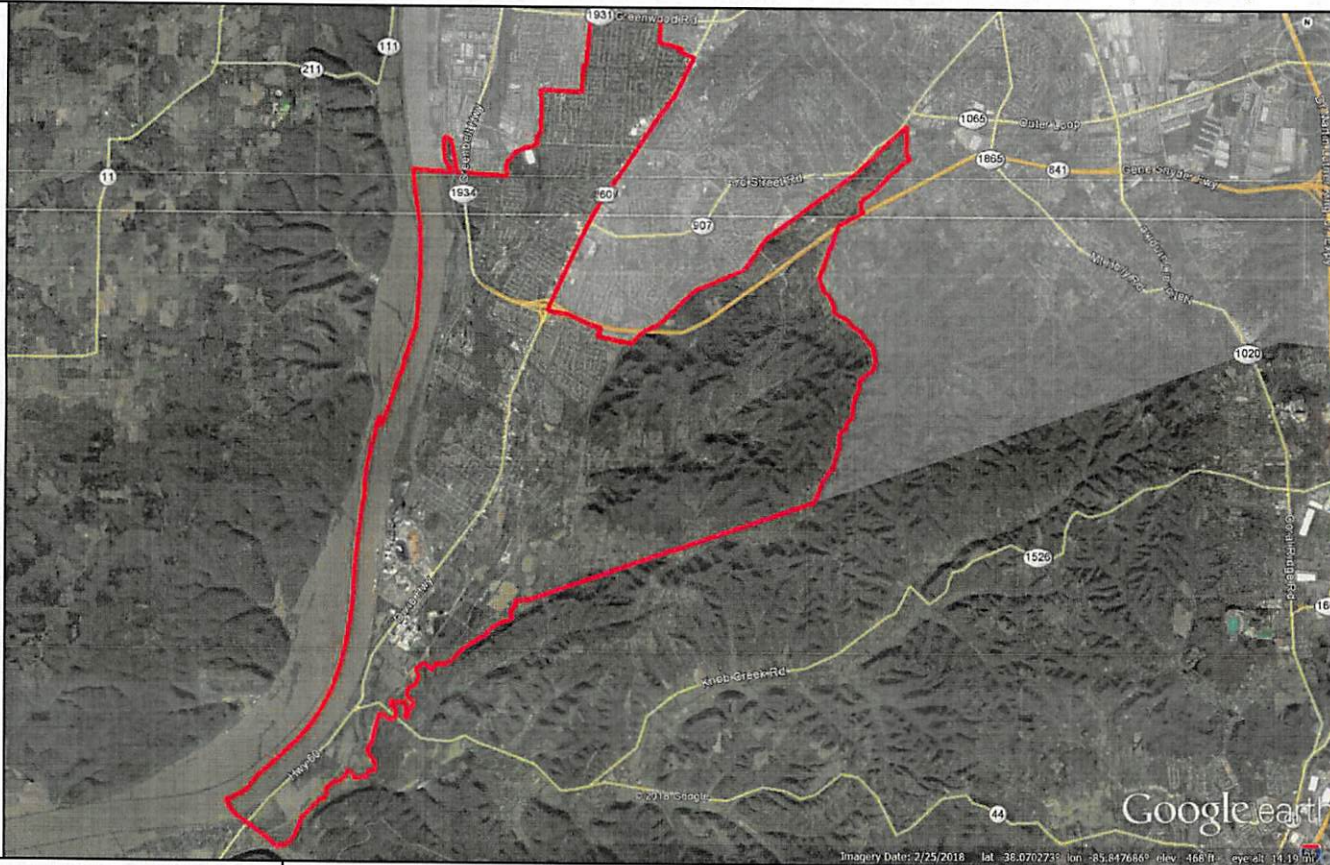
Final Design not yet completed, thus locations are subject to change.

Confidentiality Statement: Verizon/MCI metro Confidential and Proprietary. May Contain Trade Secrets, or Sensitive Commercial or Financial Information. Any Unauthorized Review, Use, Disclosure, Distribution, or Copying is Prohibited
Data Source: VZB | Projection: HLD_328_LOU | Map Created 12/14/18 | Map Created by: Corie Ratts



Louisville Metro Council District 14

MCI metro Access Transmission Services Corp. d/b/a Verizon Access Transmission Services ("Verizon")



Imagery Date: 7/25/2018 lat: 36.070273 lon: -85.847666 elev: 466 ft eye: 14.19 mi

- Small Cell Location
- District Boundary



Note: This is a PRELIMINARY VIEW only

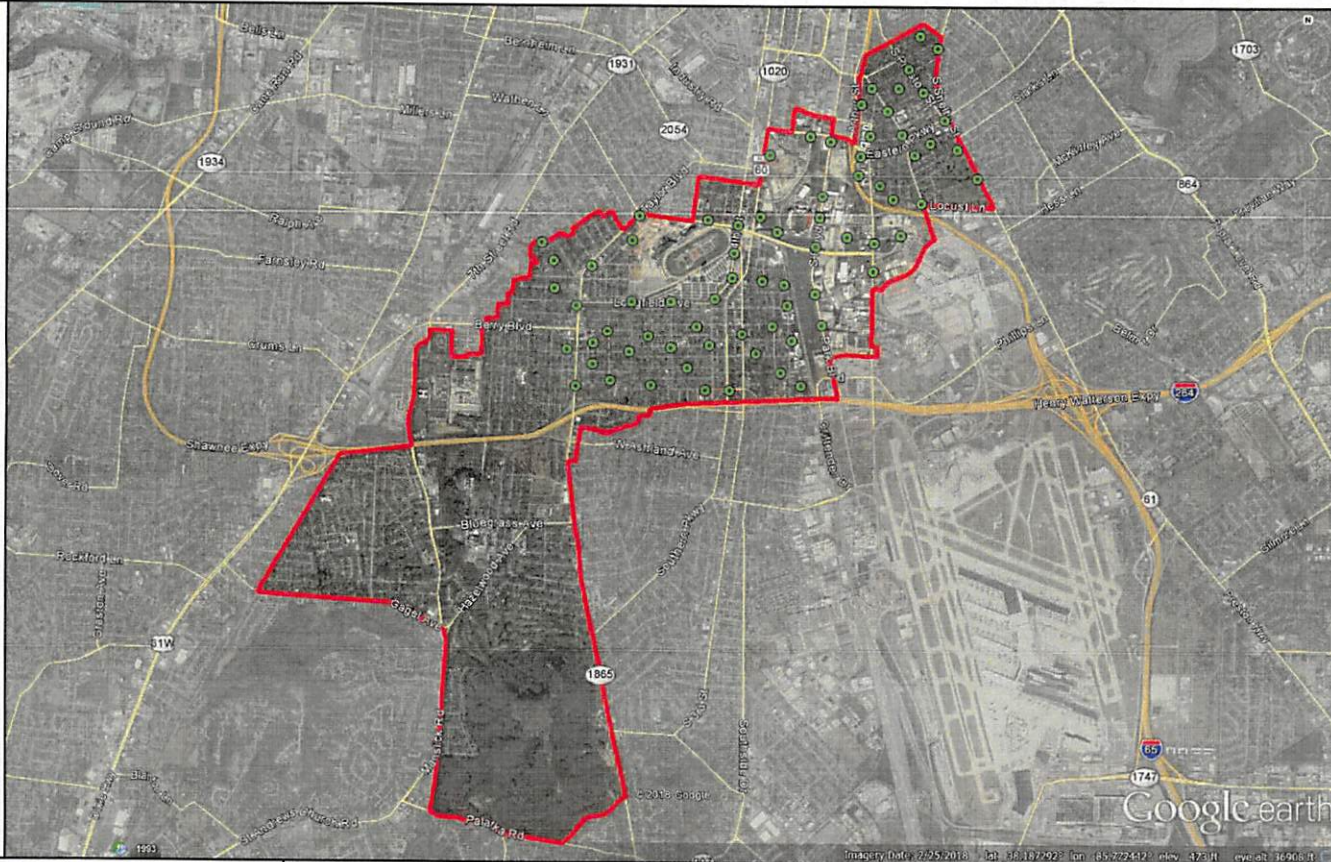
Final Design not yet completed, thus locations are subject to change.

Confidentiality Statement: Verizon/MCI metro Confidential and Proprietary. May Contain Trade Secrets, or Sensitive Commercial or Financial Information. Any Unauthorized Review, Use, Disclosure, Distribution, or Copying is Prohibited
Data Source: VZB | Projection: HLD_328_LOU | Map Created 12/14/18 | Map Created by: Corie Ratts



Louisville Metro Council District 15

MCI metro Access Transmission Services Corp. d/b/a Verizon Access Transmission Services ("Verizon")



- Small Cell Location
- District Boundary



Note: This is a PRELIMINARY VIEW only

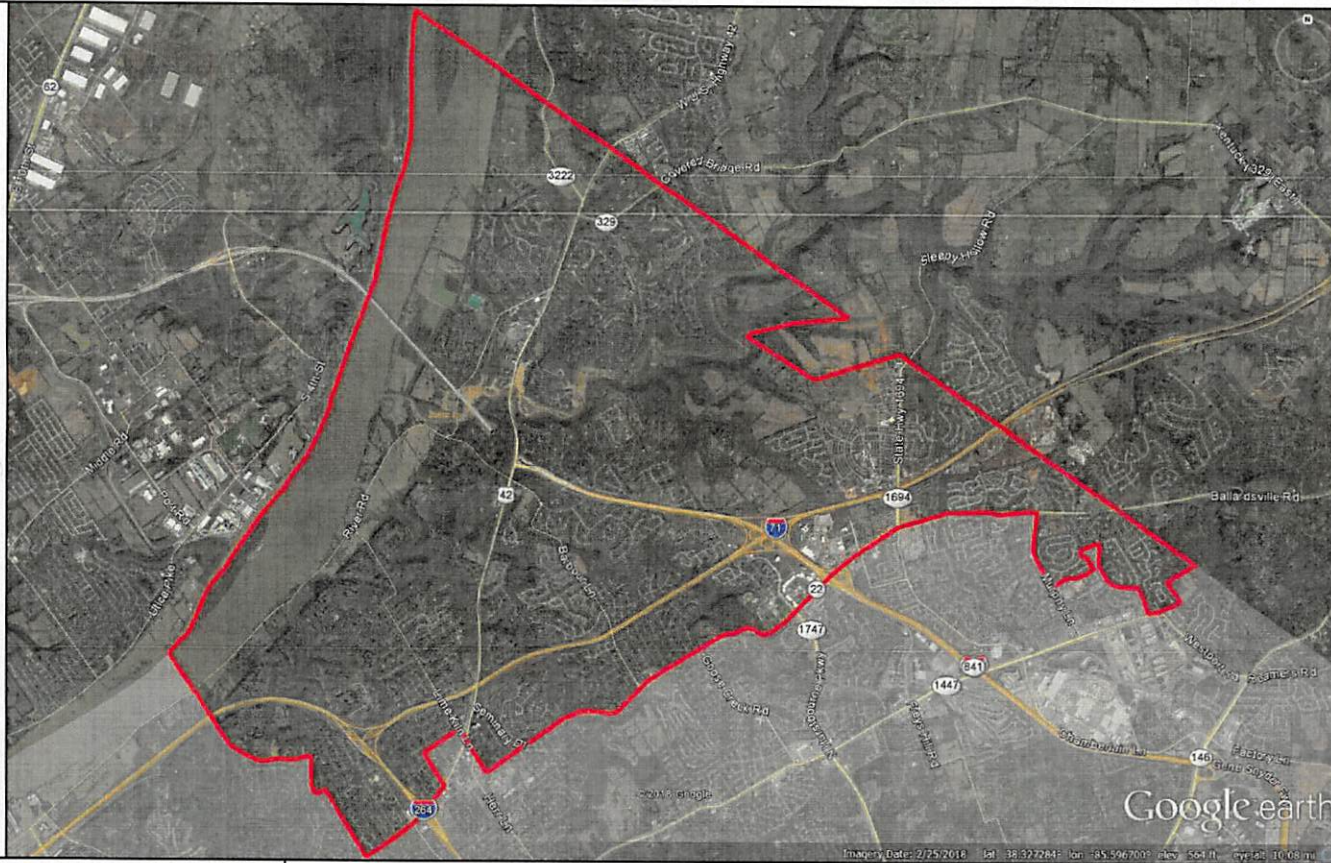
Final Design not yet completed, thus locations are subject to change.

Confidentiality Statement: Verizon/MCI metro Confidential and Proprietary. May Contain Trade Secrets, or Sensitive Commercial or Financial Information. Any Unauthorized Review, Use, Disclosure, Distribution, or Copying is Prohibited
Data Source: VZB | Projection: HLD_328_LOU | Map Created 12/14/18 | Map Created by: Corie Ratts



Louisville Metro Council District 16

MCImetro Access Transmission Services Corp. d/b/a Verizon Access Transmission Services ("Verizon")



- Small Cell Location
- District Boundary



Note: This is a PRELIMINARY VIEW only

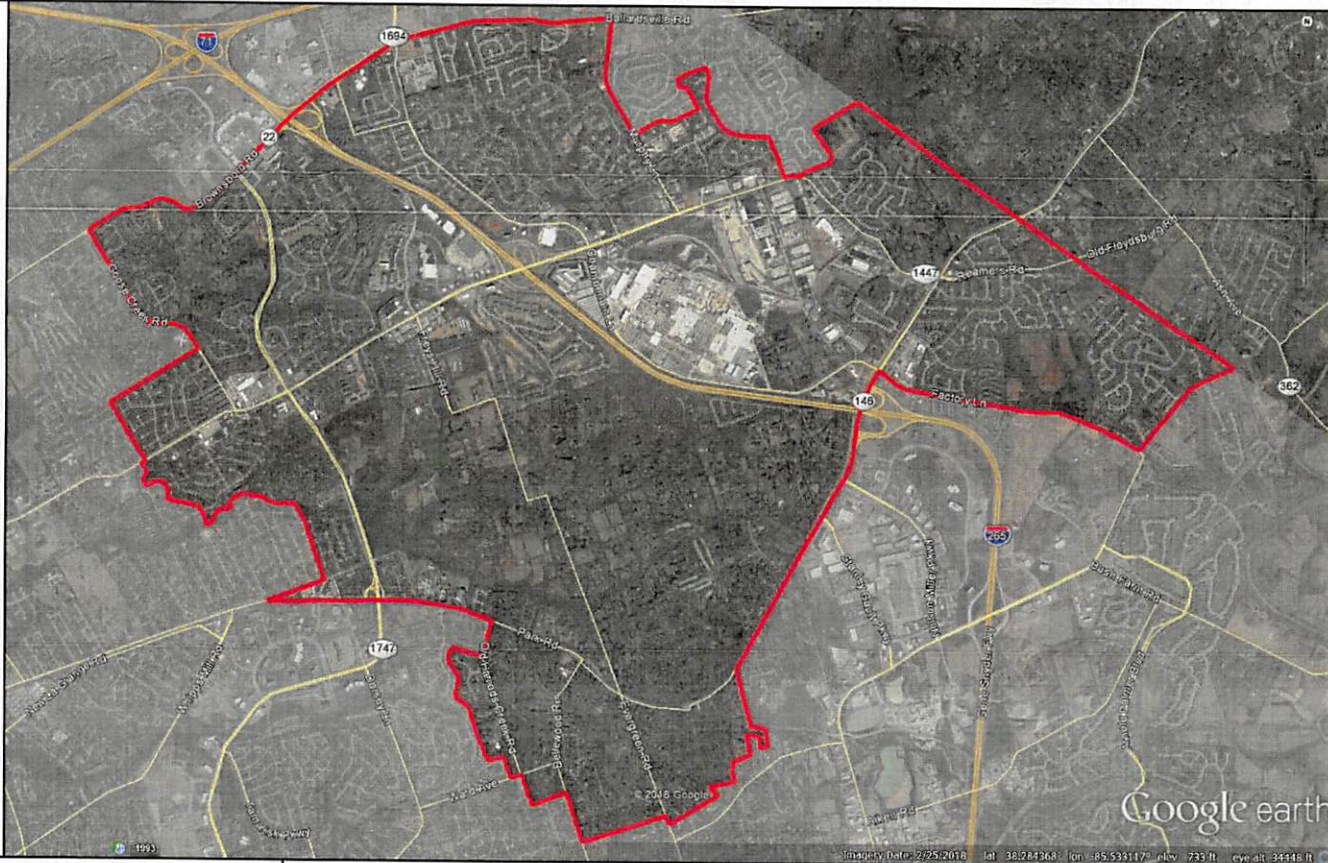
Final Design not yet completed, thus locations are subject to change.

Confidentiality Statement: Verizon/MCImetro Confidential and Proprietary. May Contain Trade Secrets, or Sensitive Commercial or Financial Information. Any Unauthorized Review, Use, Disclosure, Distribution, or Copying is Prohibited
Data Source: VZB | Projection: HLD_328_LOU | Map Created 12/14/18 | Map Created by: Corie Ratts



Louisville Metro Council District 17

MCImetro Access Transmission Services Corp. d/b/a Verizon Access Transmission Services ("Verizon")



- Small Cell Location
- District Boundary



Note: This is a PRELIMINARY VIEW only

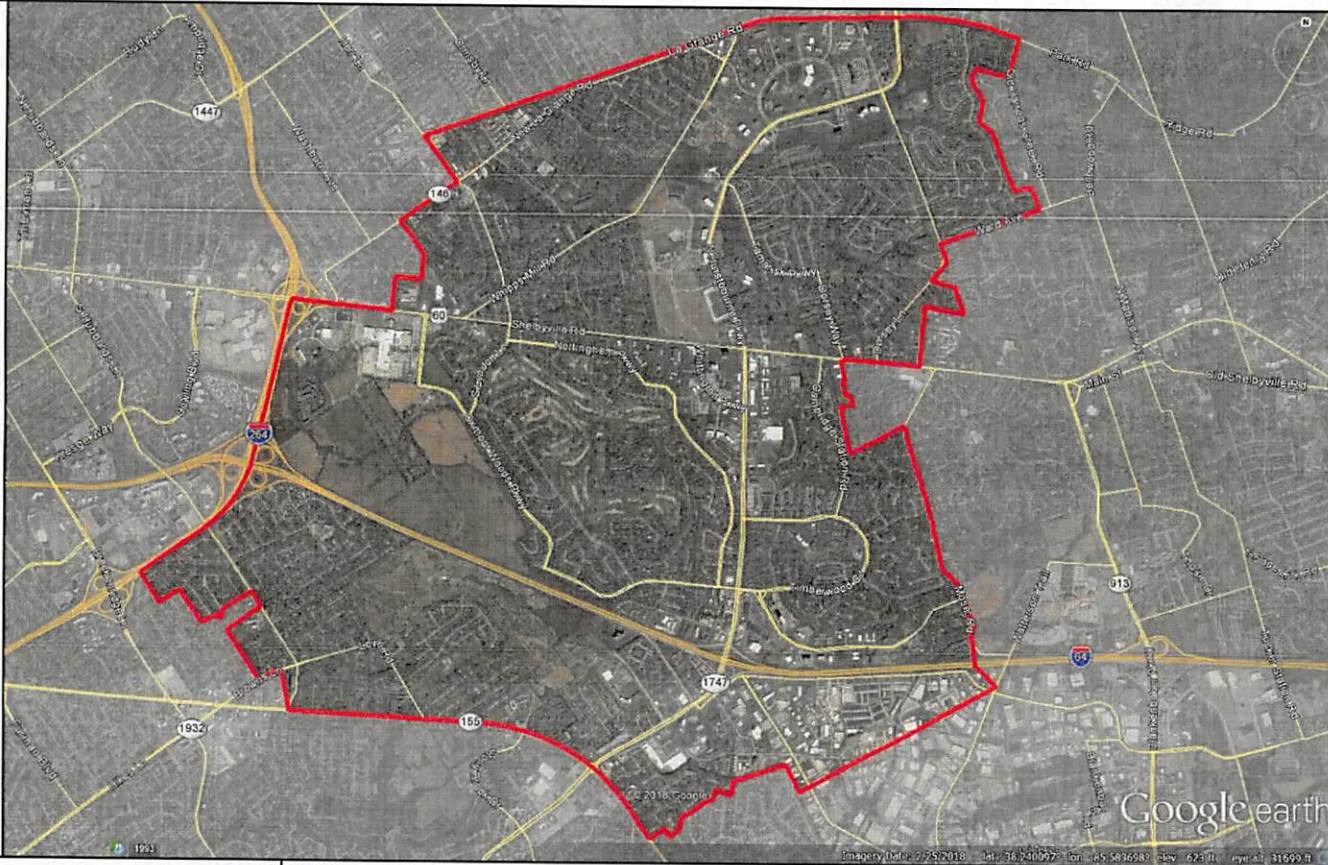
Final Design not yet completed, thus locations are subject to change.

Confidentiality Statement: Verizon/MCImetro Confidential and Proprietary. May Contain Trade Secrets, or Sensitive Commercial or Financial Information. Any Unauthorized Review, Use, Disclosure, Distribution, or Copying is Prohibited
Data Source: VZB | Projection: HLD_328_LOU | Map Created 12/14/18 | Map Created by: Corie Ratts



Louisville Metro Council District 18

MCI metro Access Transmission Services Corp. d/b/a Verizon Access Transmission Services ("Verizon")



- Small Cell Location
- District Boundary



Note: This is a PRELIMINARY VIEW only

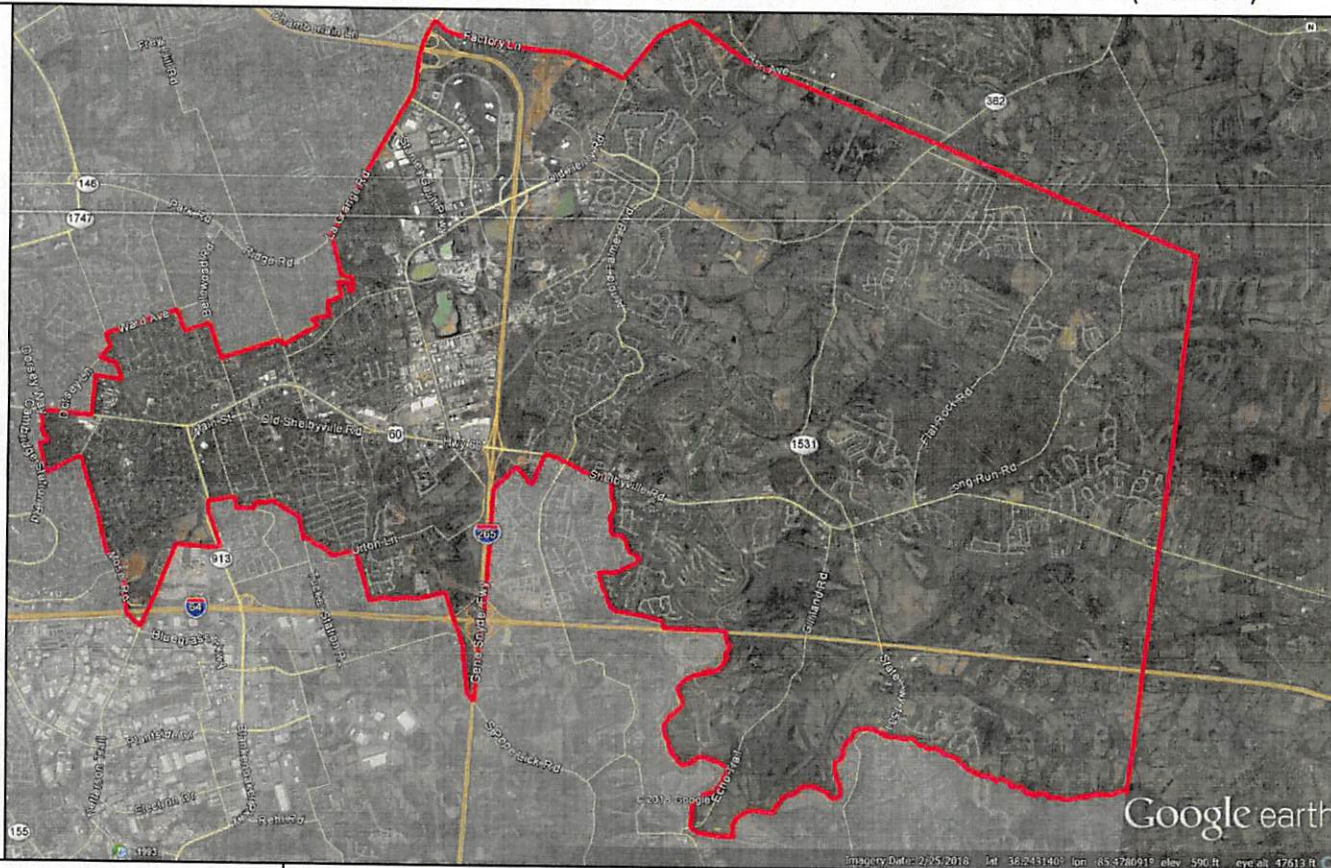
Final Design not yet completed, thus locations are subject to change.

Confidentiality Statement: Verizon/MCI metro Confidential and Proprietary. May Contain Trade Secrets, or Sensitive Commercial or Financial Information. Any Unauthorized Review, Use, Disclosure, Distribution, or Copying is Prohibited
Data Source: V2B | Projection: HLD_328_LOU | Map Created 12/14/18 | Map Created by: Corie Ratts



Louisville Metro Council District 19

MCImetro Access Transmission Services Corp. d/b/a Verizon Access Transmission Services ("Verizon")



- Small Cell Location
- District Boundary



Note: This is a PRELIMINARY VIEW only

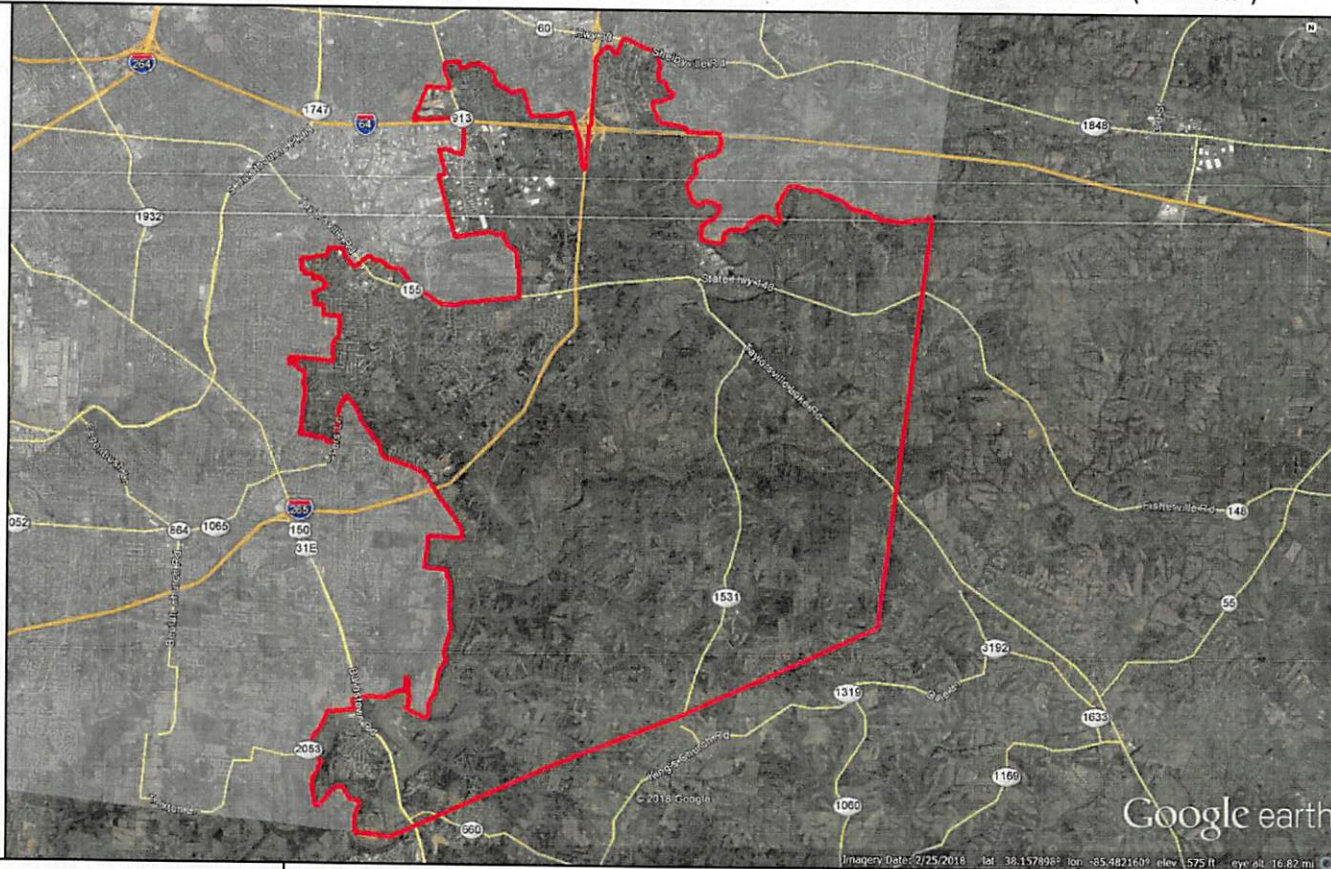
Final Design not yet completed, thus locations are subject to change.

Confidentiality Statement: Verizon/MCImetro Confidential and Proprietary. May Contain Trade Secrets, or Sensitive Commercial or Financial Information. Any Unauthorized Review, Use, Disclosure, Distribution, or Copying is Prohibited
Data Source: VZB | Projection: HLD_328_LOU | Map Created 12/14/18 | Map Created by: Corie Ratts



Louisville Metro Council District 20

MCI metro Access Transmission Services Corp. d/b/a Verizon Access Transmission Services ("Verizon")



- Small Cell Location
- District Boundary



Note: This is a PRELIMINARY VIEW only

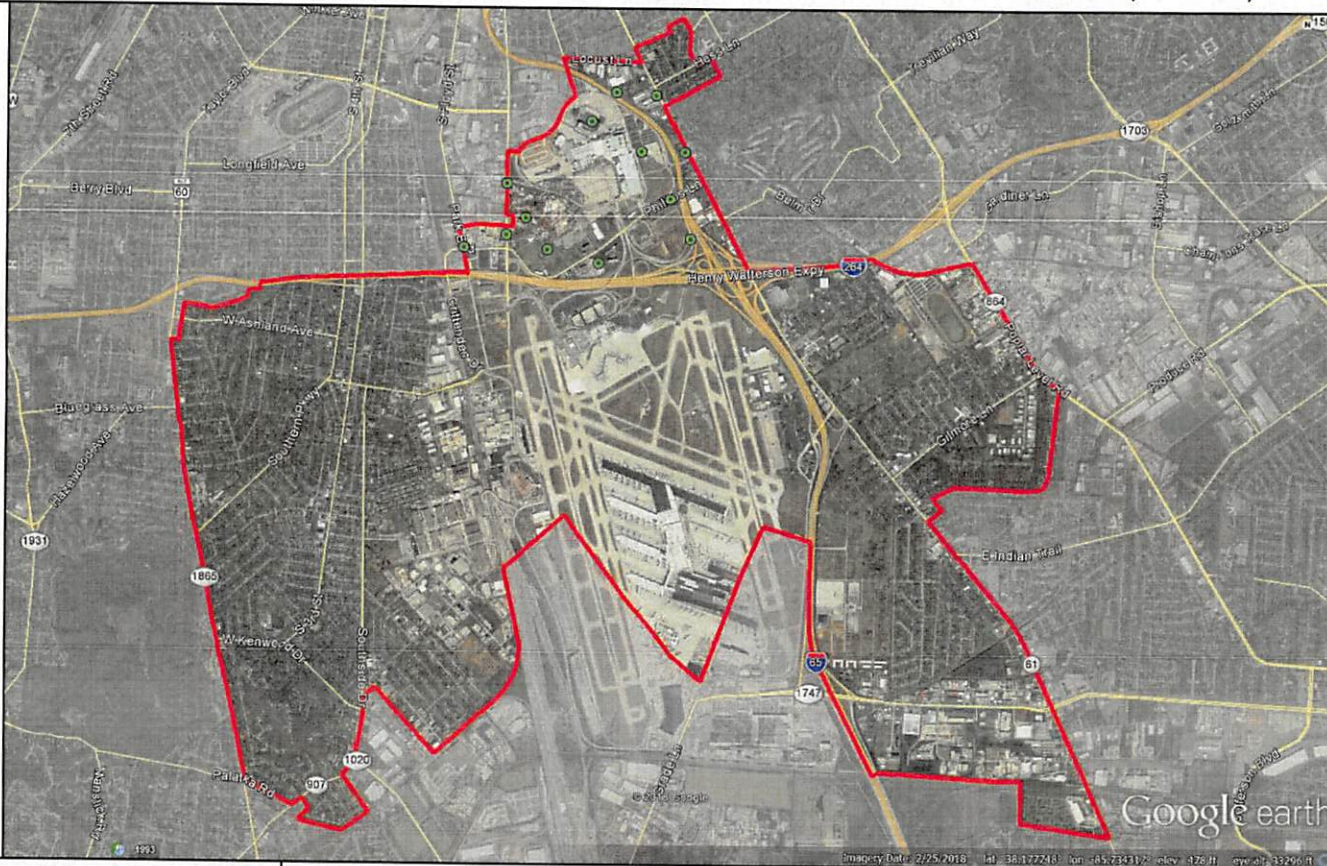
Final Design not yet completed, thus locations are subject to change.

Confidentiality Statement: Verizon/MCI metro Confidential and Proprietary. May Contain Trade Secrets, or Sensitive Commercial or Financial Information. Any Unauthorized Review, Use, Disclosure, Distribution, or Copying is Prohibited
Data Source: VZB | Projection: HLD_328_LOU | Map Created 12/14/18 | Map Created by: Corie Ratts



Louisville Metro Council District 21

MCI metro Access Transmission Services Corp. d/b/a Verizon Access Transmission Services ("Verizon")



- Small Cell Location
- District Boundary



Note: This is a PRELIMINARY VIEW only

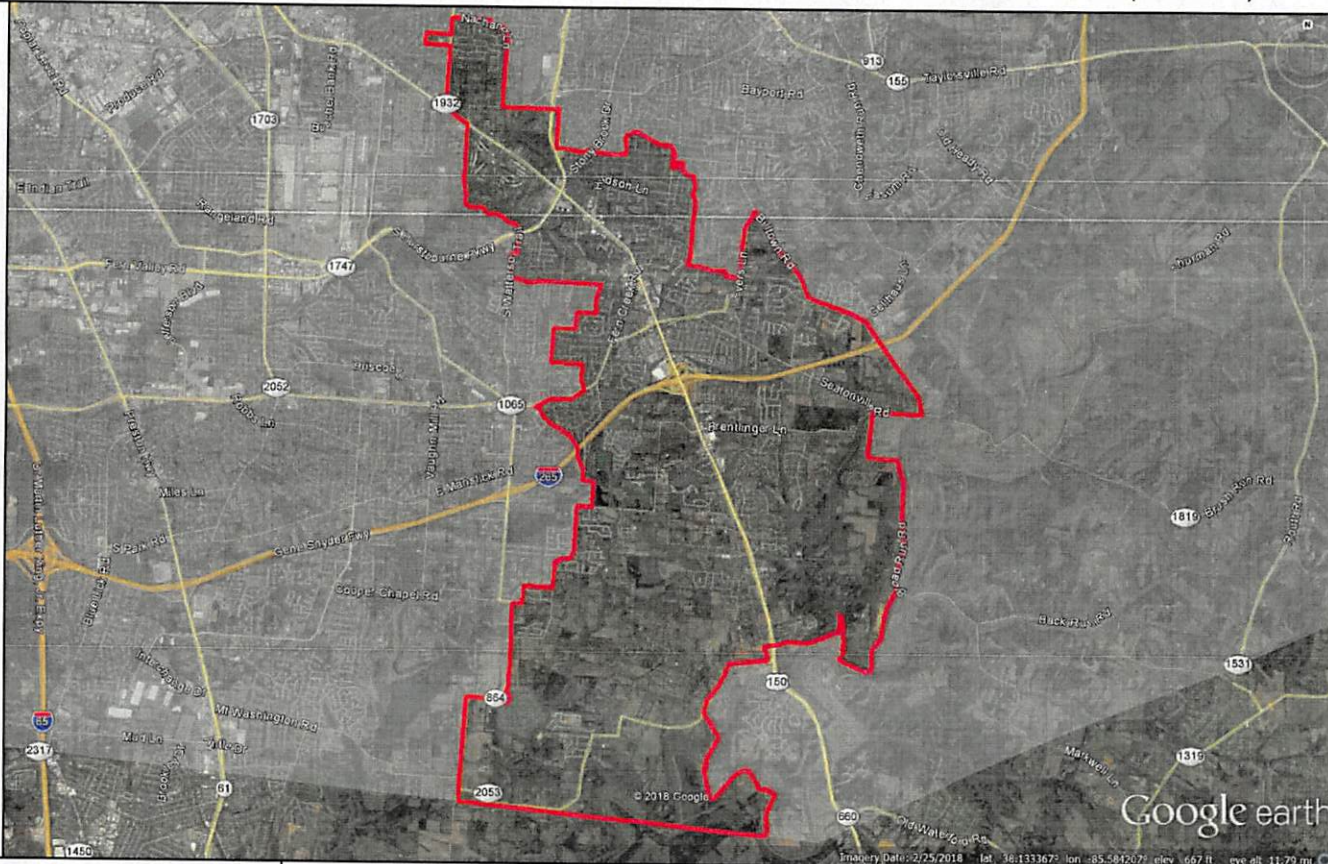
Final Design not yet completed, thus locations are subject to change.

Confidentiality Statement: Verizon/MCI metro Confidential and Proprietary. May Contain Trade Secrets, or Sensitive Commercial or Financial Information. Any Unauthorized Review, Use, Disclosure, Distribution, or Copying is Prohibited
Data Source: VZB | Projection: HLD_328_LOU | Map Created 12/14/18 | Map Created by: Corie Ratts



Louisville Metro Council District 22

MCI metro Access Transmission Services Corp. d/b/a Verizon Access Transmission Services ("Verizon")



- Small Cell Location
- District Boundary



Note: This is a PRELIMINARY VIEW only

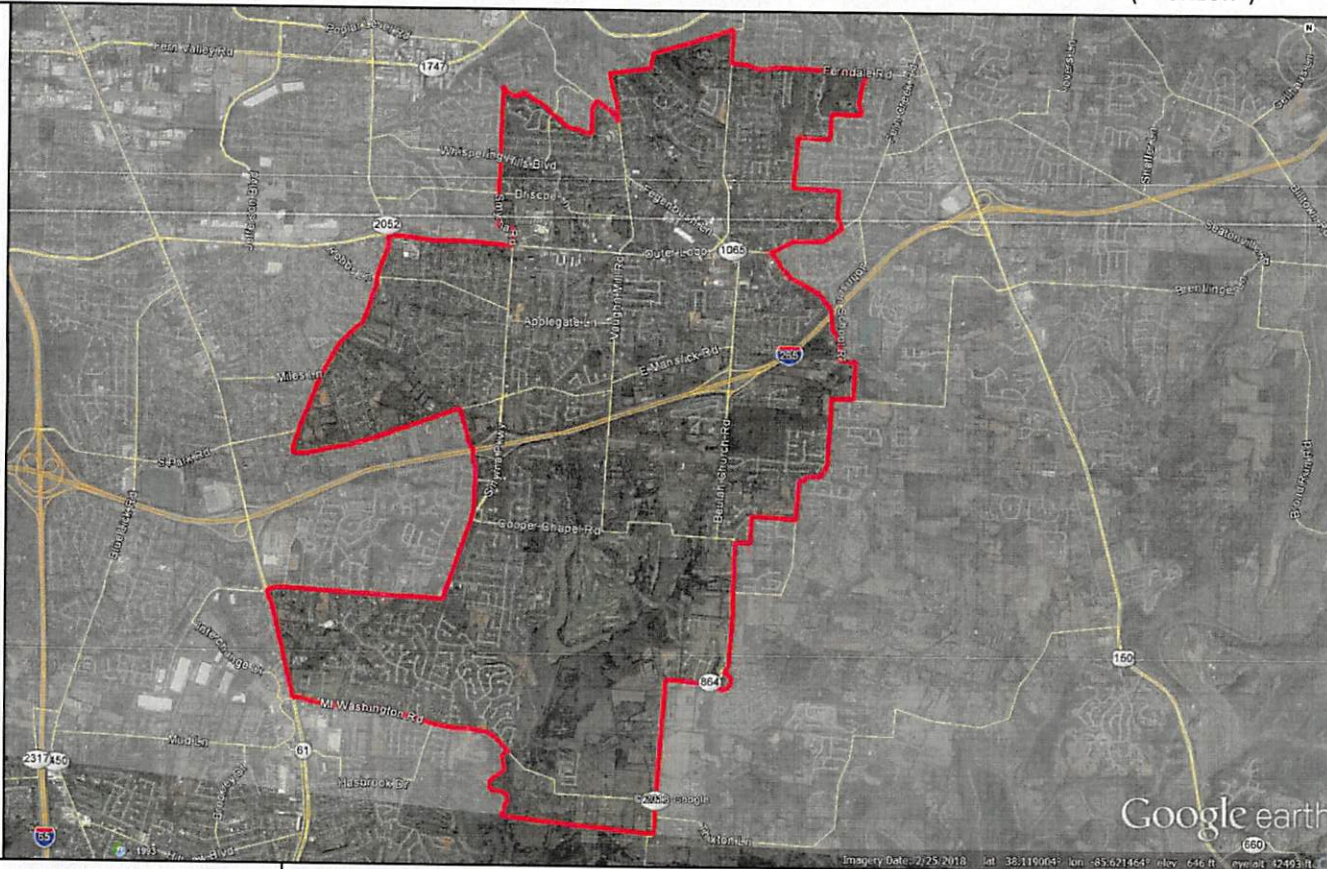
Final Design not yet completed, thus locations are subject to change.

Confidentiality Statement: Verizon/MCI metro Confidential and Proprietary. May Contain Trade Secrets, or Sensitive Commercial or Financial Information. Any Unauthorized Review, Use, Disclosure, Distribution, or Copying is Prohibited
Data Source: VZB | Projection: HLD_328_10U | Map Created 12/14/18 | Map Created by: Corie Ratts



Louisville Metro Council District 23

MCI metro Access Transmission Services Corp. d/b/a Verizon Access Transmission Services ("Verizon")



- Small Cell Location
- District Boundary



Note: This is a PRELIMINARY VIEW only

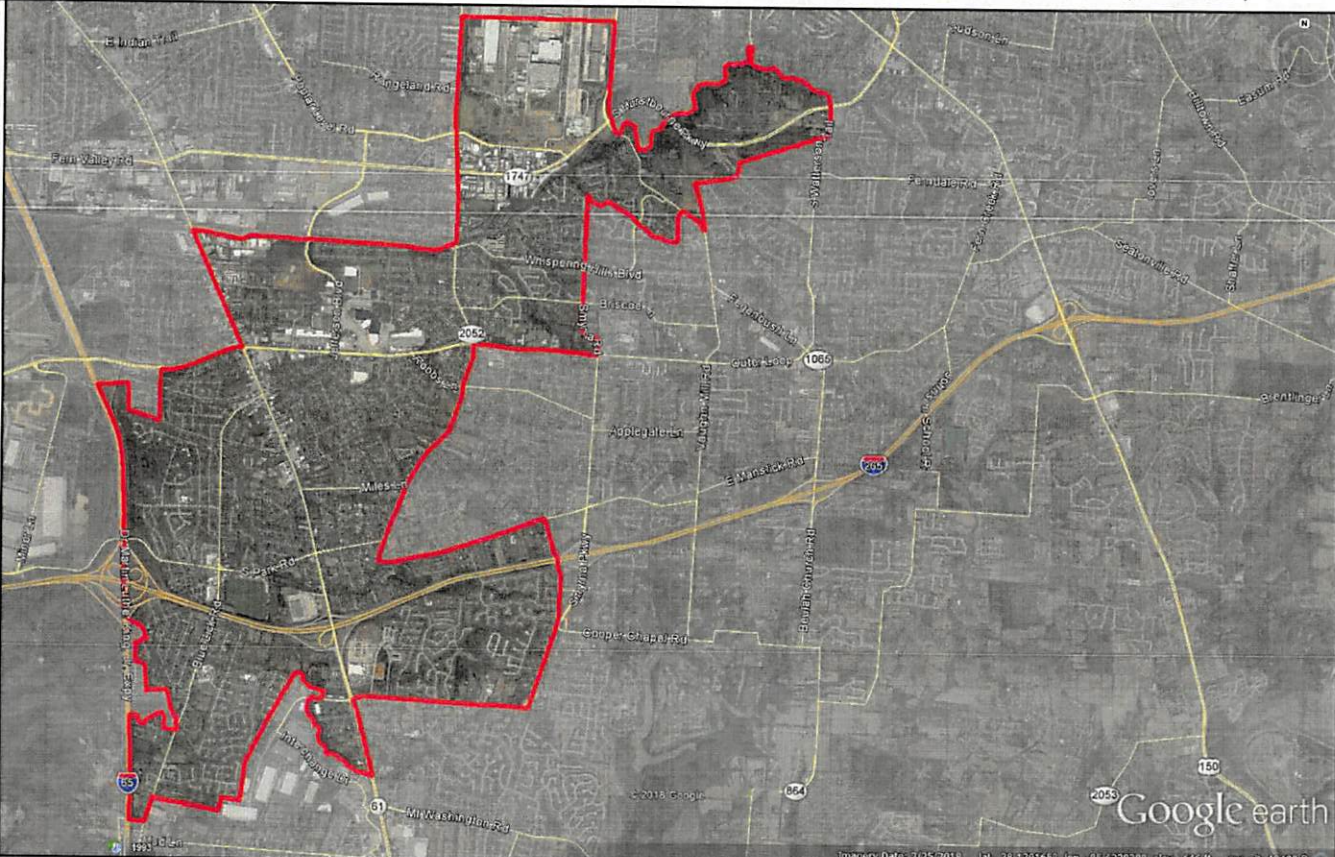
Final Design not yet completed, thus locations are subject to change.

Confidentiality Statement: Verizon/MCI metro Confidential and Proprietary. May Contain Trade Secrets, or Sensitive Commercial or Financial Information. Any Unauthorized Review, Use, Disclosure, Distribution, or Copying is Prohibited
Data Source: VZB | Projection: HLD_328_LOU | Map Created 12/14/18 | Map Created by: Corie Ratts



Louisville Metro Council District 24

MCI metro Access Transmission Services Corp. d/b/a Verizon Access Transmission Services ("Verizon")



- Small Cell Location
- District Boundary



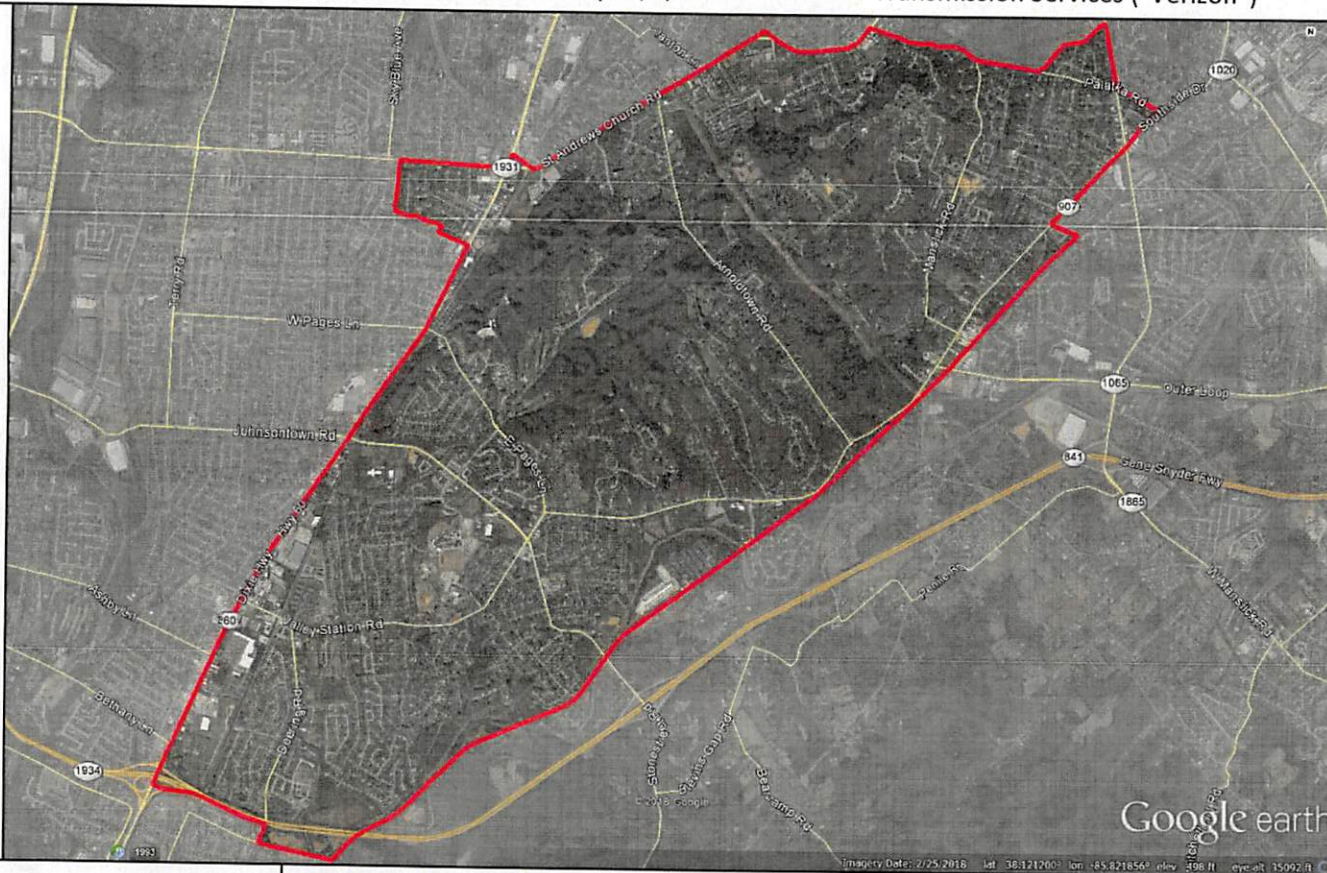
Note: This is a PRELIMINARY VIEW only

Final Design not yet completed, thus locations are subject to change.
Confidentiality Statement: Verizon/MCI metro Confidential and Proprietary. May Contain Trade Secrets, or Sensitive Commercial or Financial Information. Any Unauthorized Review, Use, Disclosure, Distribution, or Copying is Prohibited
Data Source: VZB | Projection: HLD_328_LOU | Map Created 12/14/18 | Map Created by: Corie Ratts



Louisville Metro Council District 25

MCI metro Access Transmission Services Corp. d/b/a Verizon Access Transmission Services ("Verizon")



- Small Cell Location
- District Boundary



Note: This is a PRELIMINARY VIEW only

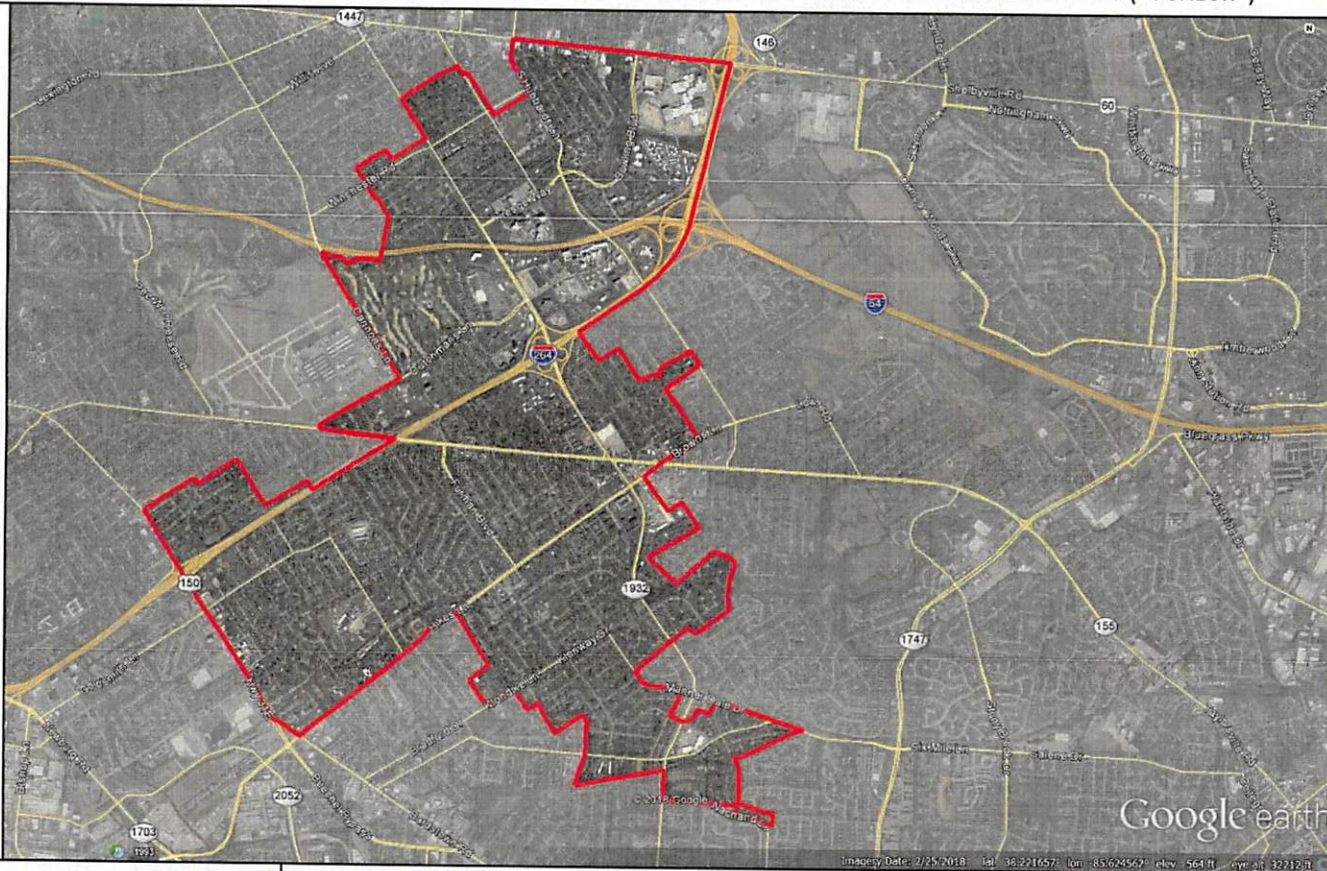
Final Design not yet completed, thus locations are subject to change.

Confidentiality Statement: Verizon/MCI metro Confidential and Proprietary. May Contain Trade Secrets, or Sensitive Commercial or Financial Information. Any Unauthorized Review, Use, Disclosure, Distribution, or Copying is Prohibited
Data Source: VZB | Projection: HLD_328_LOU | Map Created 12/14/18 | Map Created by: Corie Ratts



Louisville Metro Council District 26

MCImetro Access Transmission Services Corp. d/b/a Verizon Access Transmission Services ("Verizon")



- Small Cell Location
- District Boundary



Note: This is a PRELIMINARY VIEW only

Final Design not yet completed, thus locations are subject to change.

Confidentiality Statement: Verizon/MCImetro Confidential and Proprietary. May Contain Trade Secrets, or Sensitive Commercial or Financial Information. Any Unauthorized Review, Use, Disclosure, Distribution, or Copying is Prohibited
Data Source: VZB | Projection: HLD_328_LOU | Map Created 12/14/18 | Map Created by: Corie Ratts

