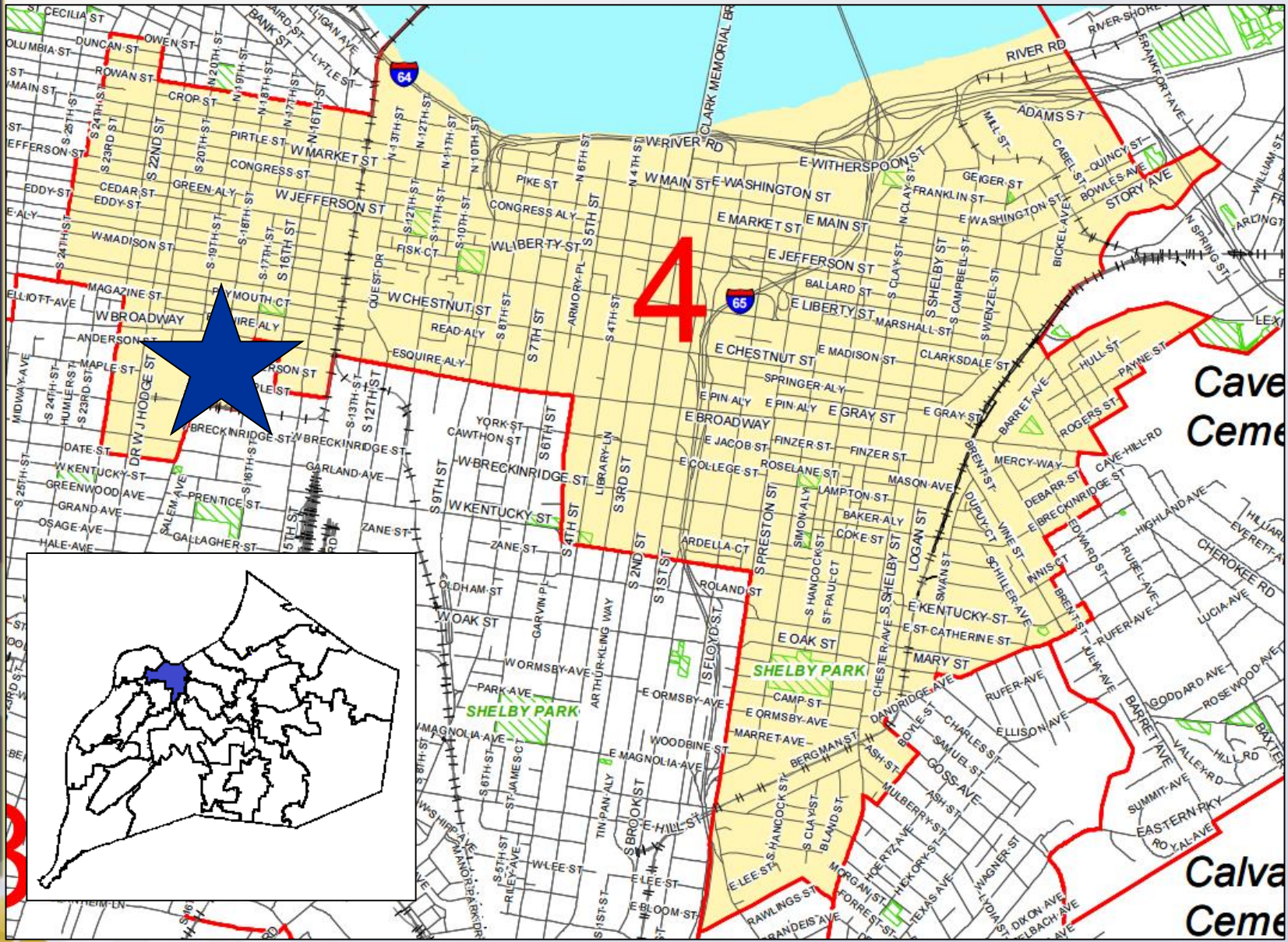
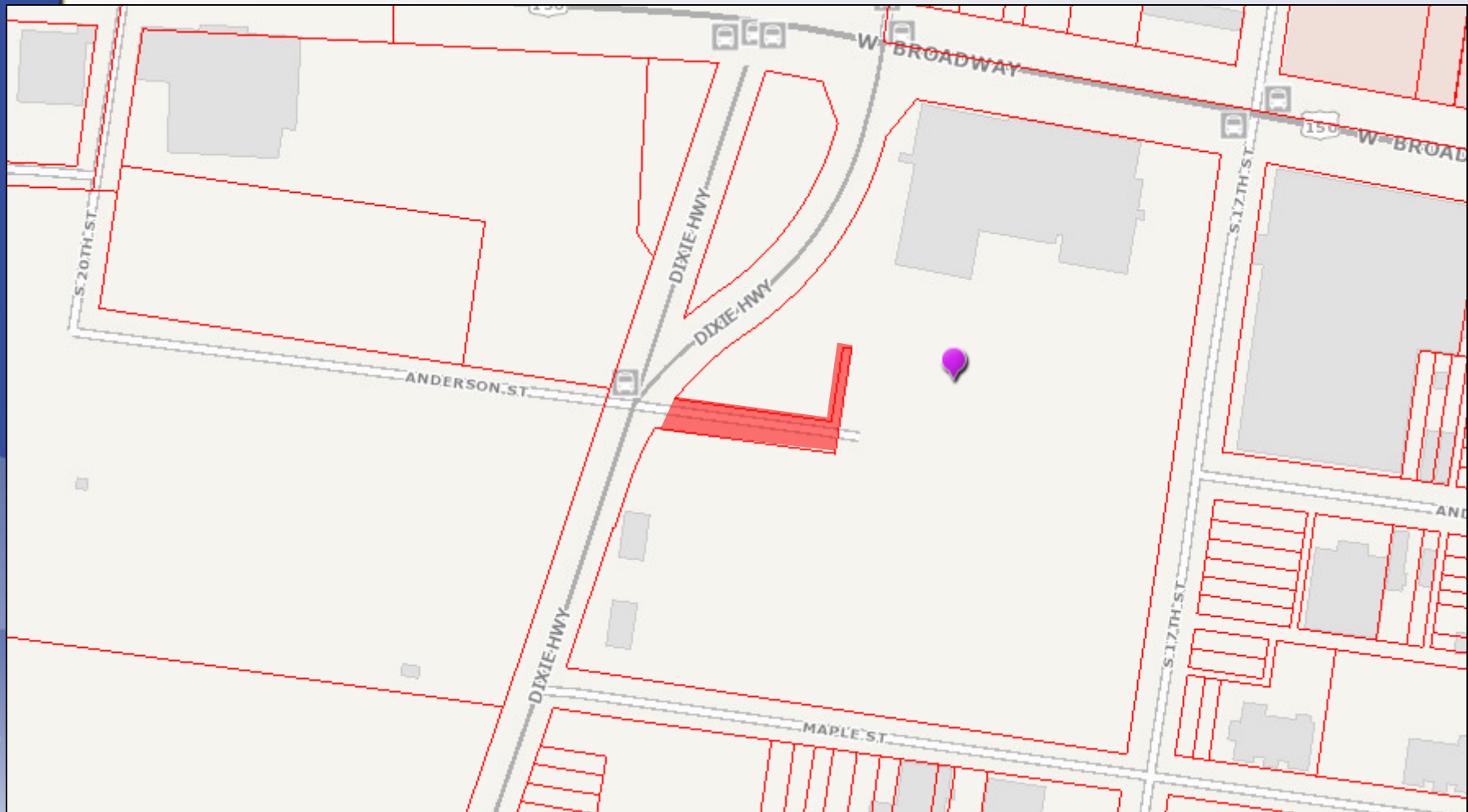


20-STRCLOSURE-0009 W ANDERSON STREET CLOSURE



Planning & Zoning Committee
September 8, 2020



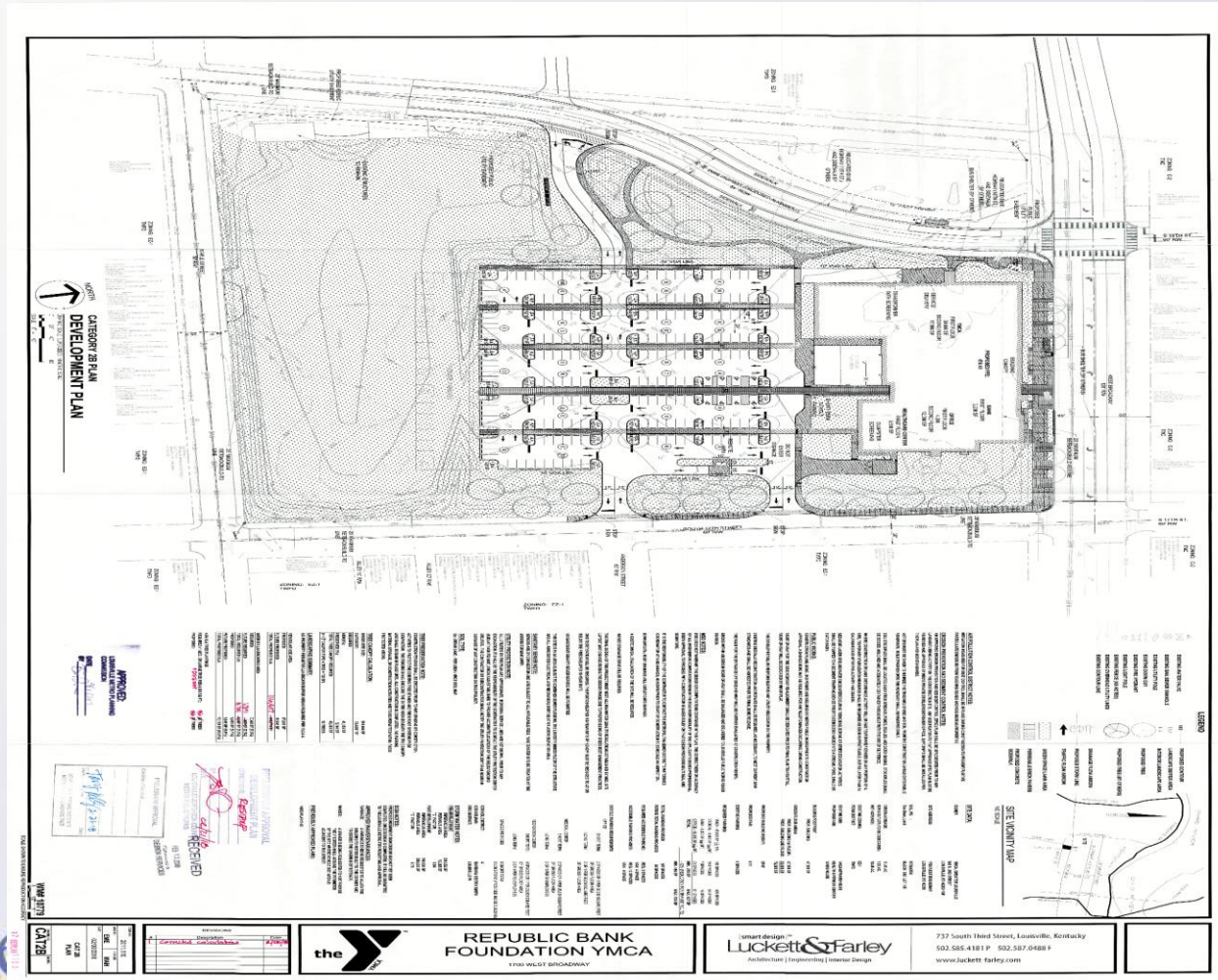


Requests

- Closure of a portion of ROW known as W Anderson Street and unnamed alley

Case Summary

- Related to 17DEVPLAN1150 (YMCA)





LEGEND

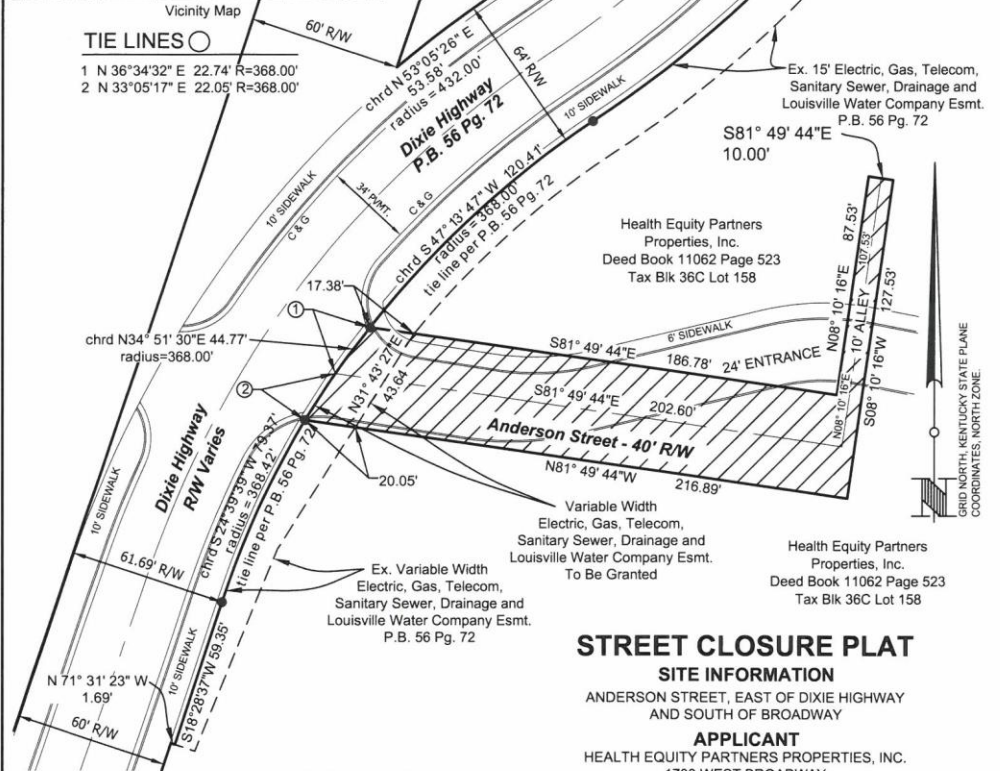
- STREET TO BE CLOSED
9169 SQUARE FEET
- IRON PIN W/CAP 2328 OR
MAG NAIL W/WASHER 2328

NOTES

1. THIS STREET CLOSURE AREA IS TO BE CONSOLIDATED WITH THE PROPERTY OF HEALTH EQUITY PARTNERS PROPERTIES, INC. SHOWN HEREON.
2. ALL DEVELOPMENT SHALL BE IN ACCORDANCE WITH CASE 17DEVPLAN1150.

TIE LINES

- 1 N 36°34'32" E 22.74' R=368.00'
- 2 N 33°05'17" E 22.05' R=368.00'



LAND SURVEYOR'S CERTIFICATE

I hereby certify that this Street Closure Plat and survey were made under my supervision, and that the angular and linear measurements as witnessed by monuments shown hereon are true and correct to the best of my knowledge and belief. This survey does not represent a boundary survey and is not intended for land transfer.

STATE OF KENTUCKY
J. CRAIG MOUNT
 2227
 LICENSED PROFESSIONAL LAND SURVEYOR

J. Craig Mount
 J. CRAIG MOUNT, PLS 2227

MAY 19, 2020
 DATE:

STREET CLOSURE PLAT

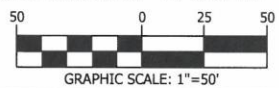
SITE INFORMATION
 ANDERSON STREET, EAST OF DIXIE HIGHWAY
 AND SOUTH OF BROADWAY

APPLICANT
 HEALTH EQUITY PARTNERS PROPERTIES, INC.
 1700 WEST BROADWAY
 LOUISVILLE, KY 40203

ZONING: E21 FORM DISTRICT: TRADITIONAL WORKPLACE
 PROPOSED USE: PARKING

BTM ENGINEERING, INC.
 Consulting Engineers Landscape Architects Planners
 3001 Taylor Springs Drive
 Louisville, Kentucky 40220
 (502) 459-8402
 Fax (502) 459-8427

Date: 3/5/2020 Project No 200063 Scale: 1"= 50' Sheet 1 of 1



Public Meetings

- LD&T meetings on 7/23/2020
- Planning Commission public hearing 7/30/2020
 - No one spoke in opposition.
 - The Commission recommended approval of the street closure by a vote of 5-0 (two commissioners were absent, one abstained, and one was having audio issues so they did not vote).