

**13705 AIKEN ROAD**  
**WRITTEN DESCRIPTION**

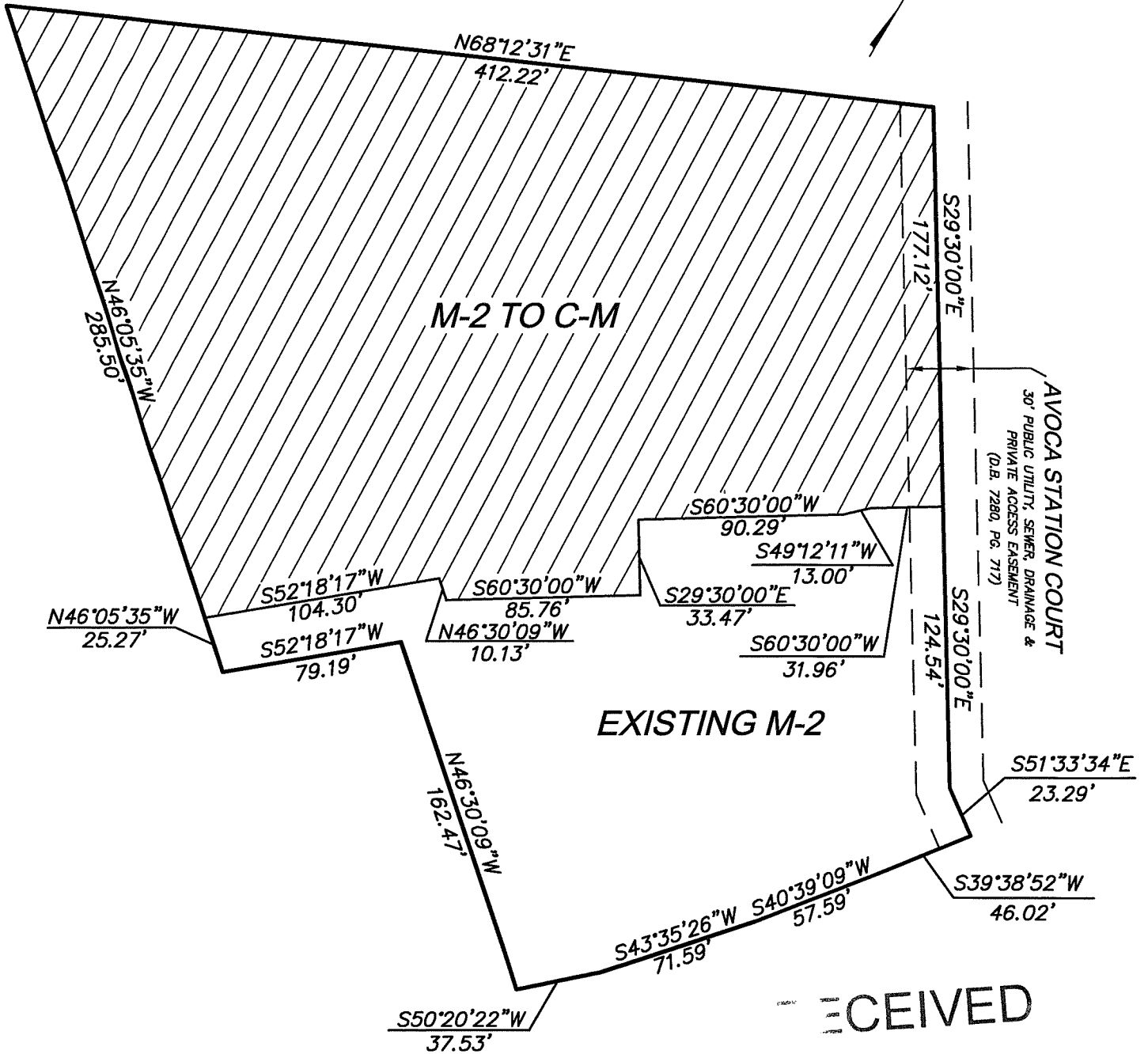
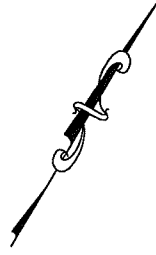
Beginning at the northeast corner of the property conveyed to F & R Friedmann, LLC by deed recorded in Deed Book 7280, Page 7274 in the Office of the Clerk of Jefferson County, Kentucky; thence South 29 degrees 30 minutes 00 seconds East, 177.12 feet to a point; thence South 60 degrees 30 minutes 00 seconds West, 31.96 feet to a point; thence South 49 degrees 12 minutes 11 seconds West, 13.00 feet to a point; thence South 60 degrees 30 minutes 00 seconds West, 90.29 feet to a point; thence South 29 degrees 30 minutes 00 seconds East, 33.47 feet to a point; thence South 60 degrees 30 minutes 00 seconds West, 85.76 feet to a point; thence North 46 degrees 30 minutes 09 seconds West, 10.13 feet to a point; thence South 52 degrees 18 minutes 17 seconds West, 104.30 feet to a point thence North 46 degrees 05 minutes 35 seconds West, 285.50 feet to a point; thence N 68 degrees 12 minutes 31 seconds East, 412.22 feet to the point of beginning, containing 1.900 acres more or less.

RECEIVED

FEB 24 2014  
PLANNING &  
DESIGN SERVICES

1320NE1026

# BOUNDARY EXHIBIT



RECEIVED

FEB 24 2014  
PLANNING &  
DESIGN SERVICES