



1139 South Fourth Street  
Louisville, KY 40203  
502.625.3009  
**Corporate Headquarters**  
6575 West Loop South, Suite 300  
Bellaire, TX 77401  
Main: 713.520.5400

**VIA EMAIL**

August 12, 2021

Ms. Ana Nouri  
WBCS Architecture  
Architectural Project Manager  
1801 Payne Street  
Louisville, Kentucky 40206  
ana@wbcsarch.com

**Subject: Water/Wetland Delineation Summary Report  
Crossings at South Park  
Jefferson County, Kentucky  
Redwing Project No.: 104385**

Dear Ms. Nouri:

RES Kentucky, LLC dba Redwing (Redwing) is pleased to provide WBCS Architecture with this *Water/Wetland Delineation Summary Report* for the Crossings at South Park property located in Louisville, Jefferson County, Kentucky. The approximately 18-acre property is located along the northeast side of Manslick Road, approximately one mile southeast of the interchange of Interstate 265 and New Cut Road (Figure 1). The goal of these services was to identify the location and extent of jurisdictional waters/wetlands and threatened/endangered (T/E) species habitat on the site to assist with preliminary project planning.

Based on the delineation, no jurisdictional water/wetland features are present on the site. Non-jurisdictional features on site include one forested wetland measuring 0.288 acre. In addition, suitable habitat for the Indiana bat (*Myotis sodalis*) and the northern long-eared bat (*Myotis septentrionalis*) is present throughout much of the mixed-aged woods habitat on the site.

## **METHODOLOGY**

The water/wetland delineation included in-house and field components. In-house research involved review of the USGS topographic quadrangle map, aerial photography, Jefferson County soil survey, and Federal Emergency Management Agency floodplain mapping. Redwing conducted a field delineation on August 4, 2021, to identify the location and extent of jurisdictional and non-jurisdictional waters/wetlands on the site. During the site visit, the presence of streams and open

water bodies was evaluated based on observations of ordinary high-water mark, defined bed and bank features, and flow regimes. Potential wetland areas were investigated using the Routine On-Site Determination Method as defined in the *Regional Supplement to the Corps of Engineers Wetland Delineation Manual: Eastern Mountain and Piedmont Region – Version 2.0* (April 2012). This technique uses a multi-parameter approach that requires positive evidence of three criteria: wetland hydrology, hydric soils, and hydrophytic vegetation. This delineation has not been verified by the U.S. Army Corps of Engineers (USACE), who holds final authority over determinations of the location and extent of jurisdictional waters/wetlands.

The field assessment was also used to identify the presence of suitable habitat for T/E species known to occur in Jefferson County, including the Indiana bat (*Myotis sodalis*), northern long-eared bat (*Myotis septentrionalis*), gray bat (*Myotis grisescens*), and running buffalo clover (*Trifolium stoloniferum*). Potential impacts to T/E species must be addressed in any federal permitting process.

## RESULTS

Based on the delineation, no jurisdictional waters are present on the site. One forested wetland measuring 0.288 acre was identified on site, but it is considered non-jurisdictional under the *Navigable Waters Protection Rule: Definition of “Waters of the United States”* (NWPR), effective June 22, 2020. The results of the water/wetland delineation are depicted on Figure 2

Wetland 1 is located in the north-central portion of the site. It lacks a sufficient connection to a jurisdictional feature and is therefore considered non-jurisdictional.

Habitat on site consists of mixed-aged upland woods throughout the entire site. Much of the mixed-aged upland woods are considered suitable summer roosting habitat for the federally endangered Indiana bat and the federally threatened northern long-eared bat. Based on maps released by the U.S. Fish and Wildlife Service (USFWS), the project is located within a zone designated as “Potential” habitat for the Indiana bat and “Known Summer 1” habitat for the northern long-eared bat. No suitable habitat for the running buffalo clover was observed on the site.

## **DISCUSSION**

Potential development-related issues are discussed below in terms of waters/wetlands, federally threatened/endangered species, and cultural-historic and archaeological resources.

### **THREATENED/ENDANGERED SPECIES**

Under the Section 404 permitting process, the USACE determines if consultation with the USFWS is required to address potential impacts to T/E species. The primary T/E species issue of concern at this site is the clearing of suitable Indiana and northern long-eared bat summer habitat. Based on maps released by the USFWS, the project is located within a zone designated as “Potential” habitat for the Indiana bat and “Known Summer 1” habitat for the northern long-eared bat. Suitable summer habitat for the Indiana and northern long-eared bats includes the mixed age woods throughout the site. Impacts to this habitat typically requires consultation with the USFWS under the Section 404 permitting process and could include a combination of seasonal clearing, a presence/absence bat survey, and/or paying a per-acre fee.

### **CULTURAL HISTORIC AND ARCHAEOLOGICAL RESOURCES**

Under the Section 404 permitting process, the USACE determines if consultation with the State Historic Preservation Office is required to address potential impacts to significant archaeological/historic features. We are not aware of any archaeological features or studies that have been done on the site. However, we can obtain a quote for these surveys, if required.

## **CONCLUSION**

In conclusion, based on Redwing’s delineation, there are no jurisdictional features present on the site. One non-jurisdictional forested wetland measuring 0.288 acre was identified on the site. The wetland does not abut a jurisdictional feature and is therefore considered non-jurisdictional. Therefore, no Section 404/401 permits from, nor coordination with, the USACE or KDOW are required. However, if you require a jurisdictional determination for due diligence purposes or for MSD approval, we can initiate this process.

We appreciate the opportunity to assist you on this important project. Please call Matt Blake at (502) 625-3009 with any questions on this report or the overall project.

Sincerely,

*Valerie J. Jones*

Valerie J. Jones  
Ecologist I

*L. Matthew Blake*

[L. Matthew Blake \(Aug 12, 2021 08:29 EDT\)](#)

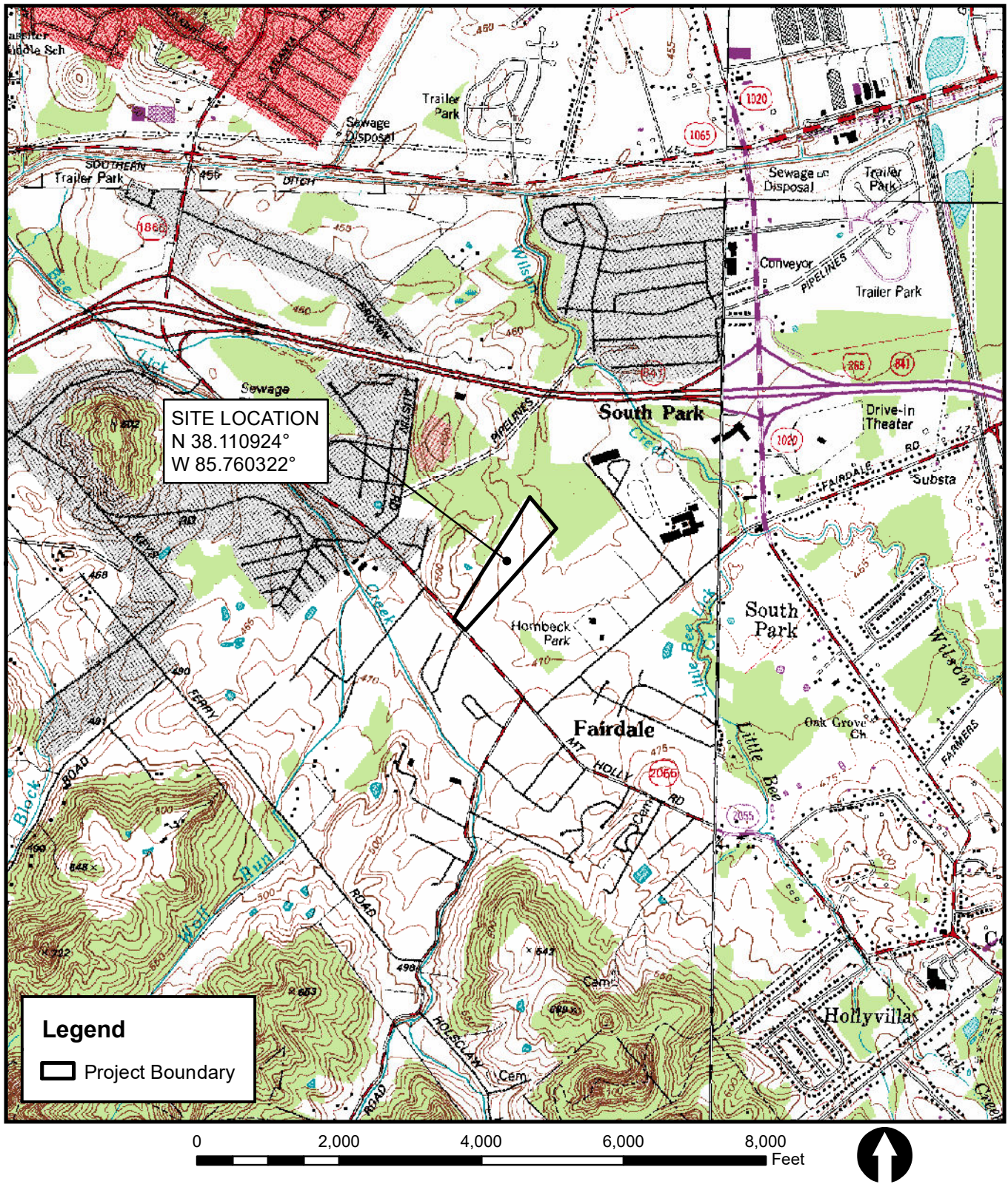
L. Matthew Blake  
Project Manager II

R:\Projects\104385-Crossings at South Park\Reports\Summary Report\104385\_Crossings at South Park\_Summary Report.docx

Attachments: Figures

## **FIGURES**

Source: USGS 7.5-minute Topographic Map - Brooks, Louisville East, Louisville West, and Valley Station, Kentucky Quadrangles.



CROSSINGS AT SOUTH PARK  
JEFFERSON COUNTY, KENTUCKY



SITE LOCATION MAP

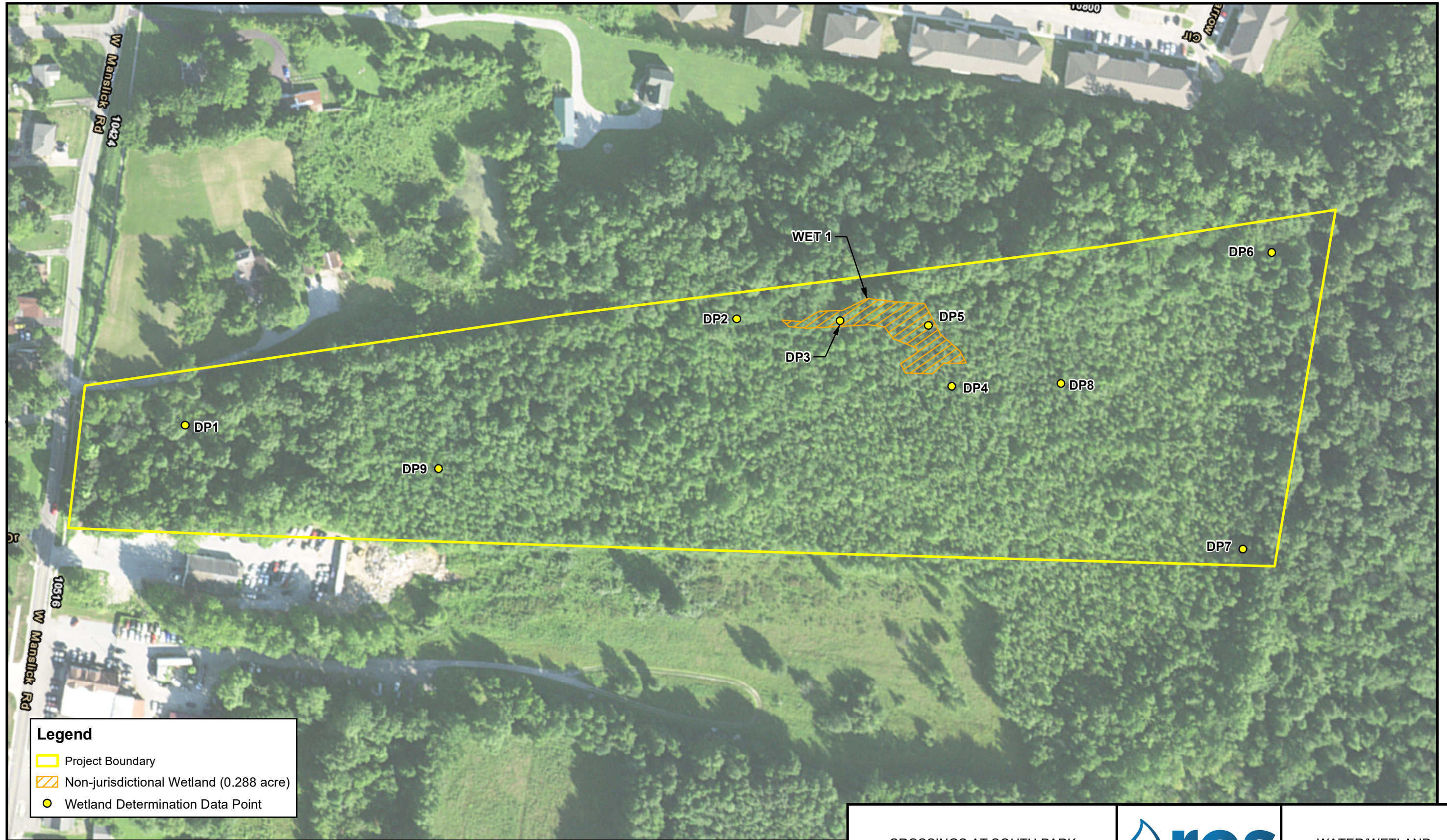
REVISED DATE: 08-10-21

DRAWN BY: EDB

FIGURE 1

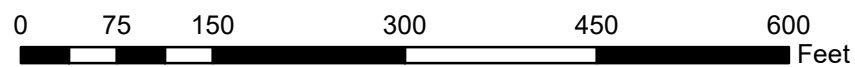
R:\Res\gis\len\gis\Projects\104385\_Crossings\_at\_South\_Park\MXD\S\Summary Report\USGS.mxd, 08-10-2021, temp

Source: Aerial - (NAIP-FSA) from kygissserver.ky.gov ArcGIS services (2018).



**Legend**

- Project Boundary
- Non-jurisdictional Wetland (0.288 acre)
- Wetland Determination Data Point



NOTE: JURISDICTIONAL WATER/WETLAND BOUNDARIES WERE DELINEATED AND SURVEYED BY RES WETLAND SCIENTISTS ON AUGUST 4, 2021. THESE BOUNDARIES HAVE NOT BEEN VERIFIED BY THE U.S. ARMY CORPS OF ENGINEERS. USE OF THIS MAP IS FOR PRELIMINARY PLANNING PURPOSES ONLY.



CROSSINGS AT SOUTH PARK  
JEFFERSON COUNTY, KENTUCKY



WATER/WETLAND  
LOCATION MAP

REVISED DATE: 08-10-21 | DRAWN BY: EDB/LMB

FIGURE 2

R:\Res\gis\Projects\104385\_Crossings at South Park\MXD\Summary Report\Water\Wetland Map.mxd, 08-10-2021, ebowman