

# 17ZONE1014

## Cardinal Transportation



Louisville Metro Planning Commission Public Hearing

Laura Mattingly, AICP, Planner II  
September 21, 2017

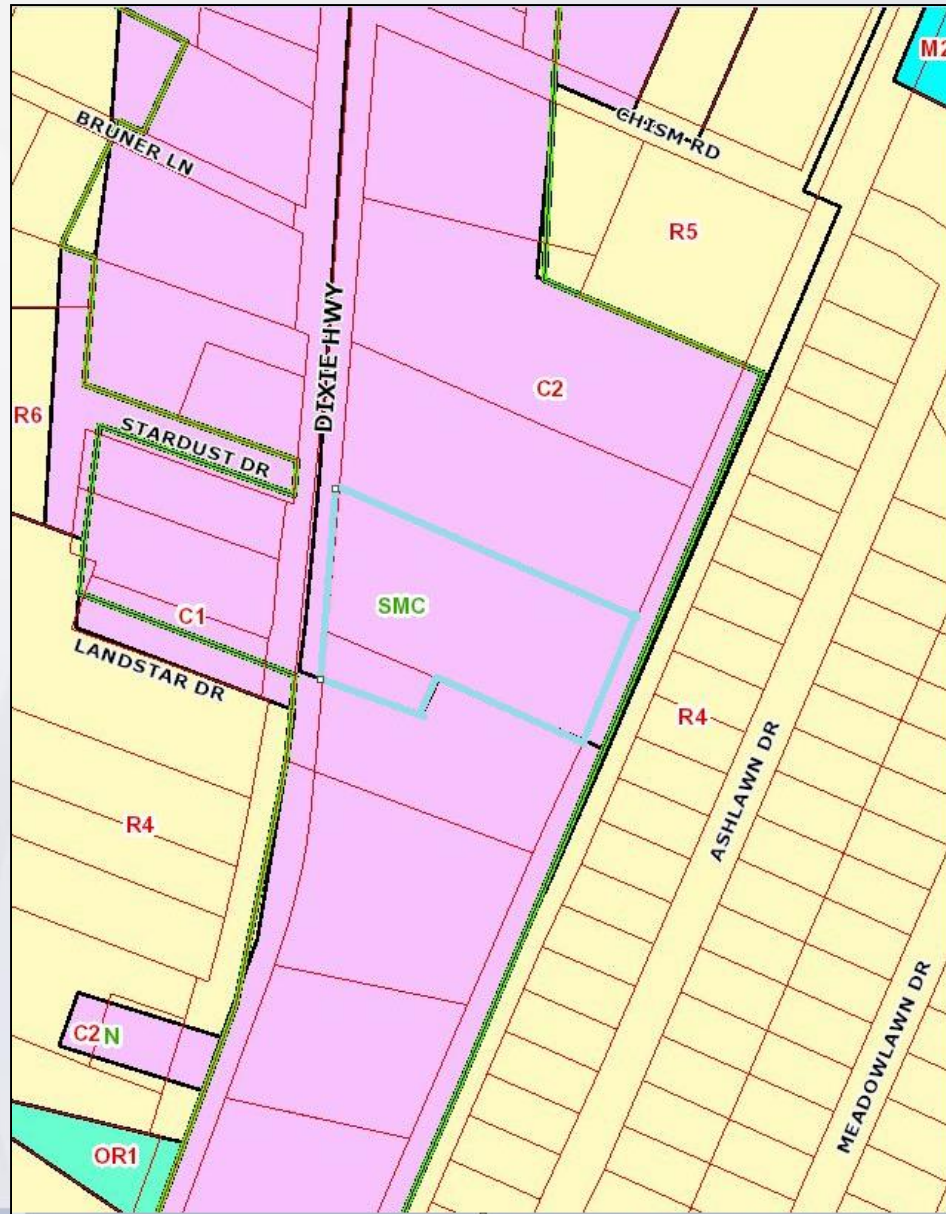
# Requests

- Waiver to decrease 15' property perimeter Landscape Buffer Areas to 5'
- Detailed District Development Plan

# Case Summary

- Vacant, graveled site with two existing structures
- Located roughly two miles South of Gene Snyder Freeway
- Utilize site for trailer parking, use existing structures for office and repair building
- Up to 20 trailers parked for 2 to 3 days at a time
- All proposed changes to site are required by Land Development Code
- Waivers previously denied and applicant has revised to provide some mitigation

# Zoning / Form District



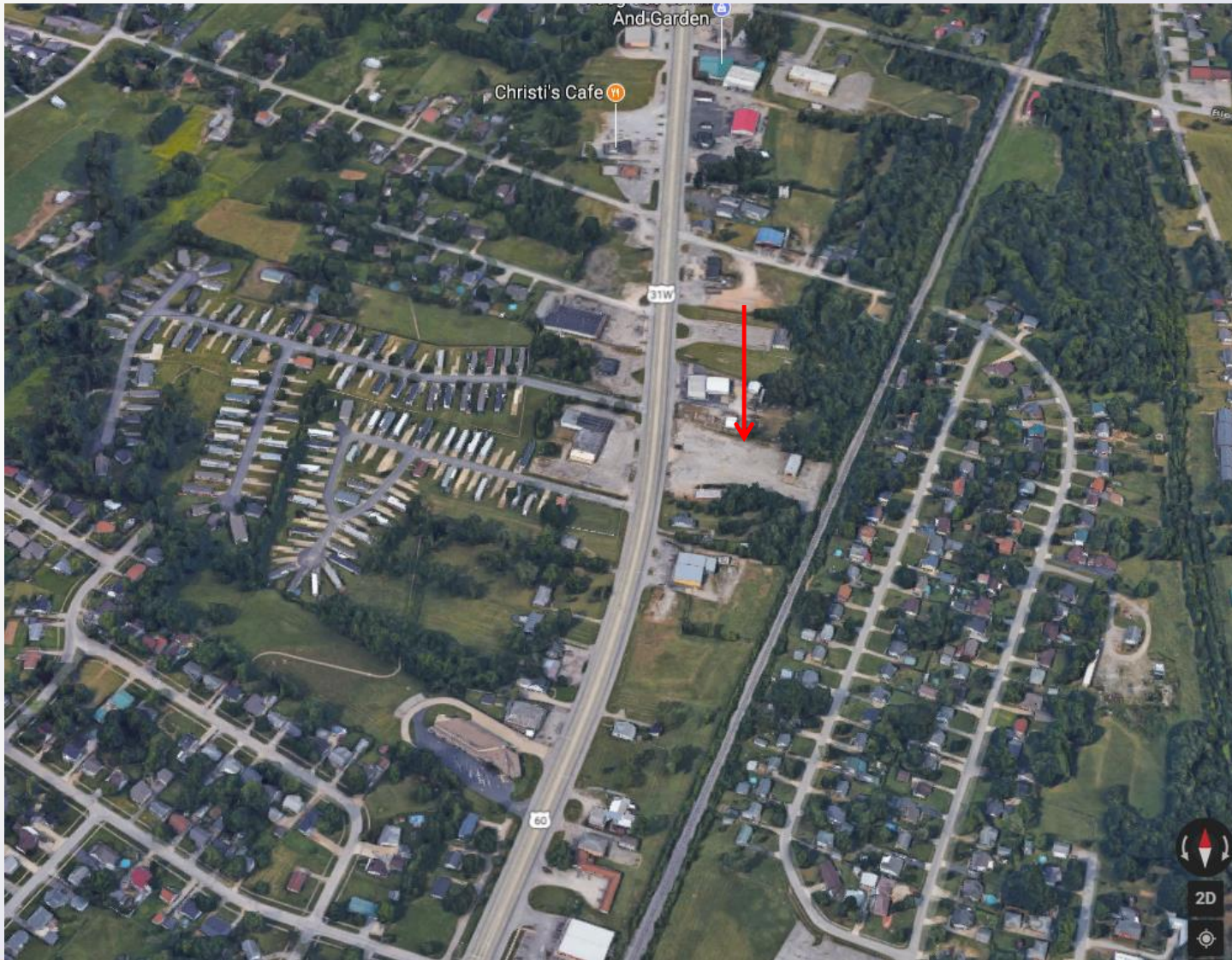


# Aerial Photo





# Site Photos – Subject Site



# Site Photos





# Site Photos - Surrounding





# Site Photos - Surrounding



# Development Plan

# Staff Analysis and Conclusions

- Proposal generally conforms to the guidelines and policies of the Comprehensive Plan and Land Development Code
- Access, landscaping improvements on previously vacant site
- Buffering provided along north and south property lines is appropriate to transitions between uses and also allow for full use of site



# Required Actions

- APPROVE or DENY the Waiver of Section 10.2.4 to decrease the 15' property perimeter landscape buffer yard along the north and south property lines to 5'
- APPROVE or DENY the Detailed District Development Plan