

CASE #18ZONE1057

LEGAL DESCRIPTION

FOR CHANGE OF ZONING FROM R4 TO PEC

Being a certain tract of land in Jefferson County, Kentucky, located southeast of Lagrange Road, North of Old Henry, West of Stanley Gault Parkway, situated along the east right-of-way line of N. English Station Road and being the property recorded in Deed Book 8829, Page 738, in the Office of the Clerk of Jefferson County, Kentucky; and being more particularly described as follows:

Beginning at a point in the east right-of-way line of North English Station Road, said point being the northwest corner to a tract of land conveyed to Emma Jean Powers Living Trust as recorded in Deed Book 10886, Page 530 in the office aforesaid;

Thence running with the east right-of-way line of said North English Station Road the following (9) nine calls:

with a curve turning to the right with an arc length of 19.94 feet, a radius of 220.00 feet, a chord bearing of **N 26°50'30" E** and a chord length of **19.93 feet** to a point;

Thence with a compound curve turning to the right with an arc length of 50.11 feet, a radius of 220.00 feet, a chord bearing of **N 35°57'45" E** and a chord length of **50.00 feet** to a point;

Thence **N 42°27'39" E** a distance of **100.00 feet** to a point;

Thence with a curve turning to the left with an arc length of 50.12 feet, a radius of 275.68 feet, a chord bearing of **N 37°12'09" E** and a chord length of **50.05 feet** to a point;

Thence with a compound curve turning to the left with an arc length of 50.07 feet, a radius of 275.68 feet, a chord bearing of **N 26°47'28" E** and a chord length of **50.00 feet** to a point;

Thence with a compound curve turning to the left with an arc length of 49.98 feet, a radius of 275.68 feet, a chord bearing of **N 16°23'41" E** and a chord length of **49.91 feet** to a point;

Thence with a compound curve turning to the left with an arc length of 50.07 feet, a radius of 275.68 feet, a chord bearing of **N 05°59'53" E** and a chord length of **50.00 feet** to a point;

Thence with a compound curve turning to the left with an arc length of 50.07 feet, a radius of 275.68 feet, a chord bearing of **N 04°24'29" W** and a chord length of **50.00 feet** to a point;

Thence with a compound curve turning to the left with an arc length of 38.34 feet, a radius of 275.68 feet, a chord bearing of **N 13°35'43" W** and a chord length of **38.31 feet** to a point;

Thence **N 71°24'26" E** a distance of **311.85 feet** to a point;

Thence **N 72°44'10" E** a distance of **219.94 feet** to a point;

Thence **S 14°48'04" E** a distance of **367.30 feet** to a point;

Thence **S 74°35'07" W** a distance of **793.10 feet** to the point of beginning.

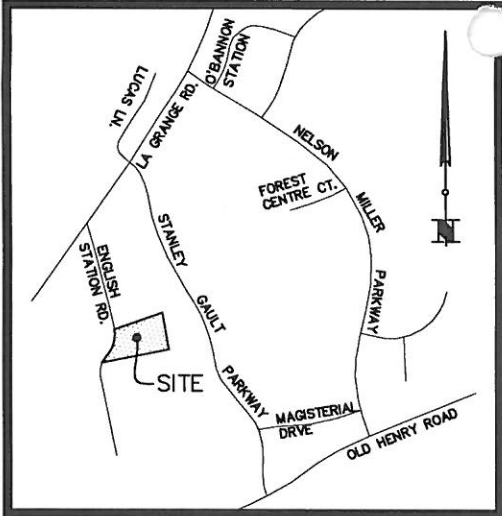
Having an area of 217,732.0 square feet, 4.998 acres

RECEIVED

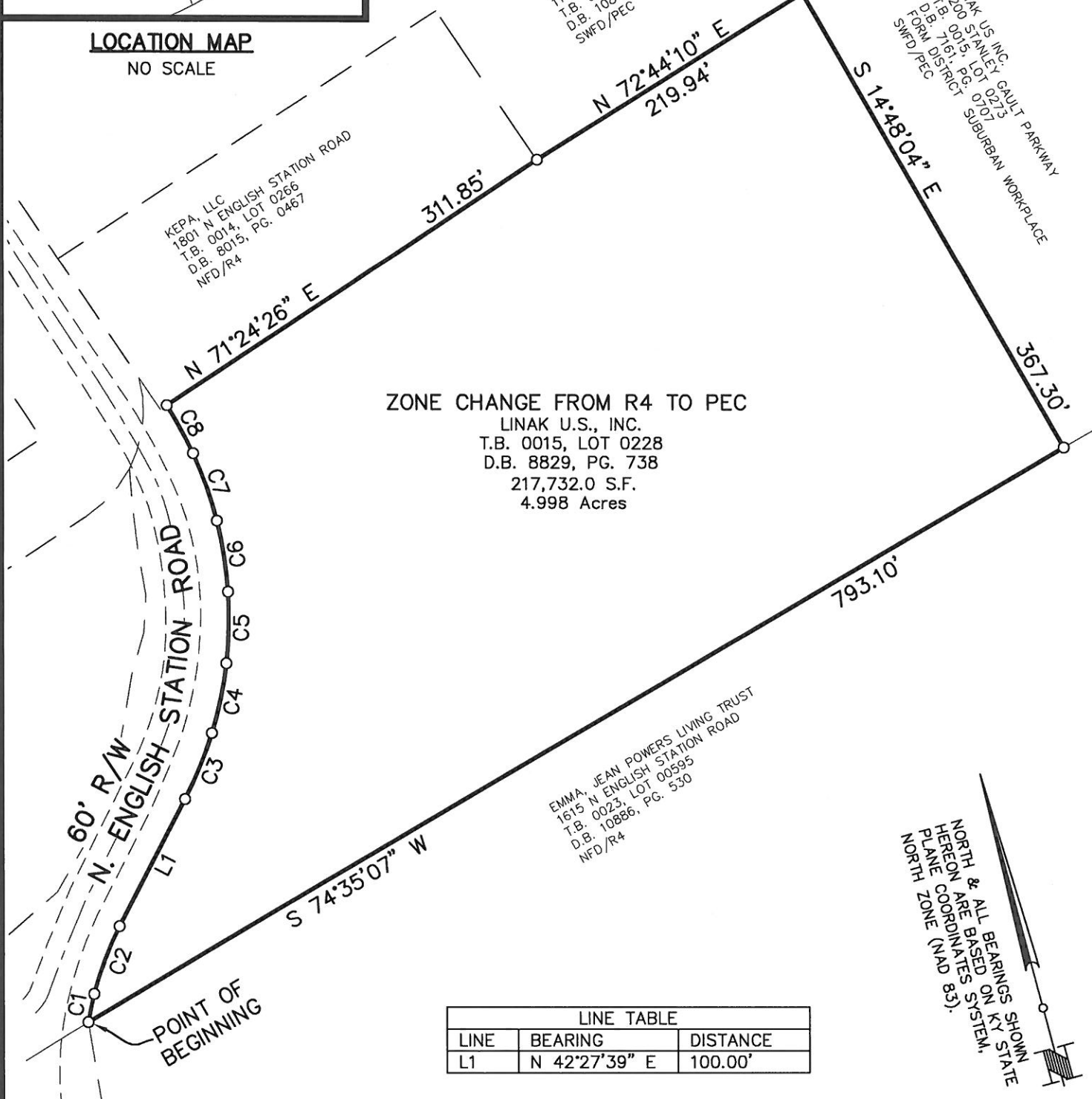
AUG 14 2018

PLANNING &
DESIGN SERVICES

18ZONE1057



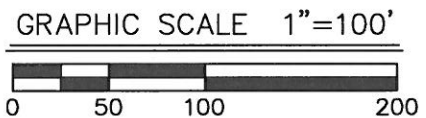
LOCATION MAP
NO SCALE



ZONE CHANGE FROM R4 TO PEC
 LINAK U.S., INC.
 T.B. 0015, LOT 0228
 D.B. 8829, PG. 738
 217,732.0 S.F.
 4.998 Acres

LINE TABLE		
LINE	BEARING	DISTANCE
L1	N 42°27'39" E	100.00'

CURVE TABLE			
CURVE	CHORD BEARING	CHORD LENGTH	RADIUS
C1	N 26°50'30" E	19.93'	220.00'
C2	N 35°57'45" E	50.00'	220.00'
C3	N 37°12'09" E	50.05'	275.68'
C4	N 26°47'28" E	50.00'	275.68'
C5	N 16°23'41" E	49.91'	275.68'
C6	N 05°59'53" E	50.00'	275.68'
C7	N 04°24'29" W	50.00'	275.68'
C8	N 13°35'43" W	38.31'	275.68'



NORTH & ALL BEARINGS SHOWN
 HEREON ARE BASED ON KY STATE
 PLANE COORDINATES SYSTEM,
 NORTH ZONE (NAD 83).

**BOUNDARY EXHIBIT #18ZONE1057
 FROM R4 TO PEC ZONE**

PROPERTY OF:
 LINAK U.S., INC.
 2200 STANLEY GAULT PARKWAY
 LOUISVILLE, KY. 40223
 TAX BLOCK 0015, LOT 0228
 DEED BOOK 8829, PAGE 738

PROPERTY ADDRESS:
 1701 N. ENGLISH STATION ROAD
 LOUISVILLE KENTUCKY 40223

DATE: 08/10/18

SCALE: 1"=100'



MINDEL SCOTT
 ENGINEERING ► SURVEYING ►
 PLANNING ► LANDSCAPE ARCHITECTURE
 5151 Jefferson Blvd. Louisville, KY 40219
 502-485-1508 ► MindelScott.com