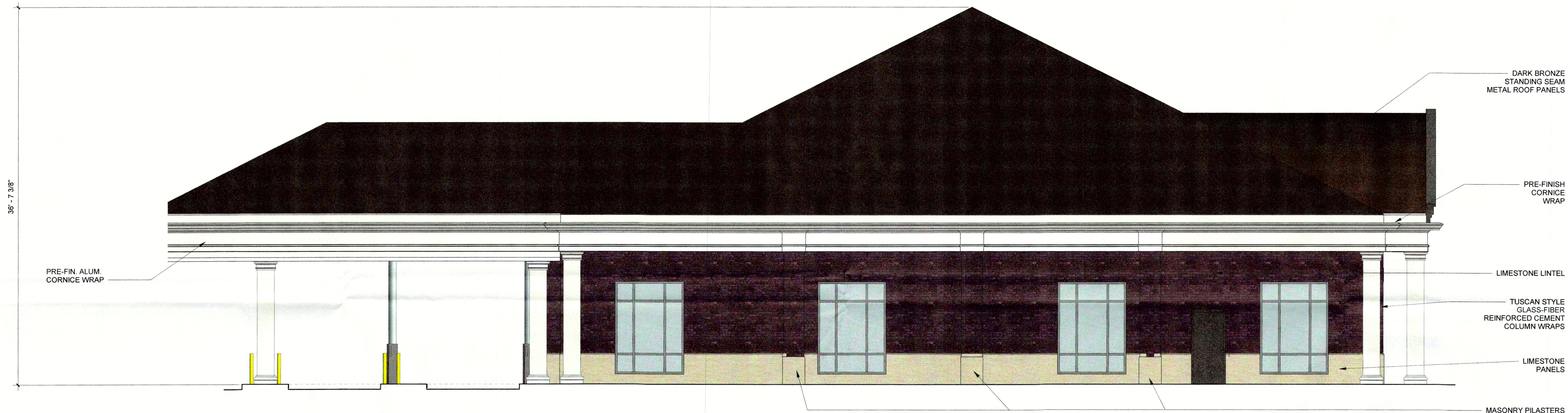


**WEST ELEVATION**

3/16" = 1'-0"



**SOUTH ELEVATION**

3/16" = 1'-0"

Window / Glass - Percentage - Building Elevations	East Elevation	West Elevation	South Elevation	North Elevation	Total
Brick/Stone Veneer	71.60%	88.64%	78.62%	68.05%	76.87%
Glazed Openings	28.40%	11.36%	21.38%	31.95%	23.13%
<b>Total Percentages</b>	<b>100.00%</b>	<b>100.00%</b>	<b>100.00%</b>	<b>100.00%</b>	<b>100.00%</b>

Window / Glass - Square Foot - Building Elevations	East Elevation	West Elevation	South Elevation	North Elevation	Total
Brick/Stone Veneer	907.43	1,118.97	882.76	781.03	3,690.19
Glazed Openings	360.00	143.45	240.00	366.67	1,110.12
<b>Total Areas</b>	<b>1,267.43</b>	<b>1,262.42</b>	<b>1,122.76</b>	<b>1,147.70</b>	<b>4,800.31</b>

Windows & Animated Features - Percentage - Building Plan	Street East Elevation	Non-Street West Elevation	Street South Elevation	Street North Elevation	Total
Overall Width	92.17	92.17	83.50	83.50	351.34
Total Features Width Percentage	64.40%	23.15%	45.13%	61.14%	48.22%

Window / Glass - Linear Dimension - Building Plan	East Elevation	West Elevation	South Elevation	North Elevation	Total
Overall Width	92.17	92.17	83.50	83.50	351.34
Total Features Width	59.36	21.34	37.68	51.05	169.43

**MATERIAL LEGEND**

MATERIAL	
LIMESTONE	
BRICK - GLEN GERY "BRANDYWINE" with BLACK MORTAR	
EIFS - "DRYVIT" MOONLIGHT 612, WITH SANDPEBBLE FINE FINISH	
PREFINISHED METAL FASCIA - "STONE WHITE"	
PREFINISHED METAL ROOF - "DARK BRONZE"	
SKYLIGHT FRAMING - "DARK BRONZE"	
STOREFRONT SYSTEM DOORS AND WINDOWS - "ANODIZED ALUMINUM"	
HOLLOW METAL DOOR / PAINT - "BROWN"	

NOT FOR CONSTRUCTION

Revisions:

#	Description	Date

Designed By:	Drawn By:	Checked By:
RMF	JMS	RMF

The drawings, specifications and other documents, including those in electronic form prepared by Hafer for this project are instruments of service, and may be used solely with respect to this project. The documents may not be reproduced or modified by a third party without first obtaining the express written consent of Hafer. Authorized use of electronic media or file does not guarantee that these files contain complete and accurate information. In order to insure the accuracy of the information contained and that no changes or modifications have been made, these files must be compared to the project's contract documents with stamped and sealed certification and applicable approved modifications.

Sheet Title:

**SCHEMATIC ELEVATIONS & MATERIALS**

Architect's Project No. **1811-317** Date: **April, 2019**

Drawing No. **RR-29-2019**  
DESIGN SERVICES

**SD-3**

19 DEPLAN 1.0.0.2