

RECEIVED
MAR 05 2018
PLANNING &
DESIGN SERVICES

CASE #18ZONE1009

LEGAL DESCRIPTION

FOR CHANGE OF ZONING FROM R4 TO R5

A certain area of land lying and being in Jefferson County, Kentucky, the City of Louisville; situated along the east right-of-way line of Shaffer lane and north of the Gene Snyder and being the property recorded in Deed Book 7985 Page 767, with the Office of Clerk, Jefferson County, Kentucky; and being more particularly described as follows:

Beginning at a point in the eastern right of way of Shaffer Lane thence with Shaffer Lane for the following Five (5) calls;

N 3°00'00" E a distance of 100.96' to a point,

N 8°18'36" W a distance of 50.99' to a point,

N 3°00'00" E a distance of 100.00' to a point,

N 6°27'44" W a distance of 152.07' to a point,

N 3°00'00" E a distance of 169.91' to a point,

Thence leaving said right of way N 87°30'00" E a distance of 1319.07' to a point;

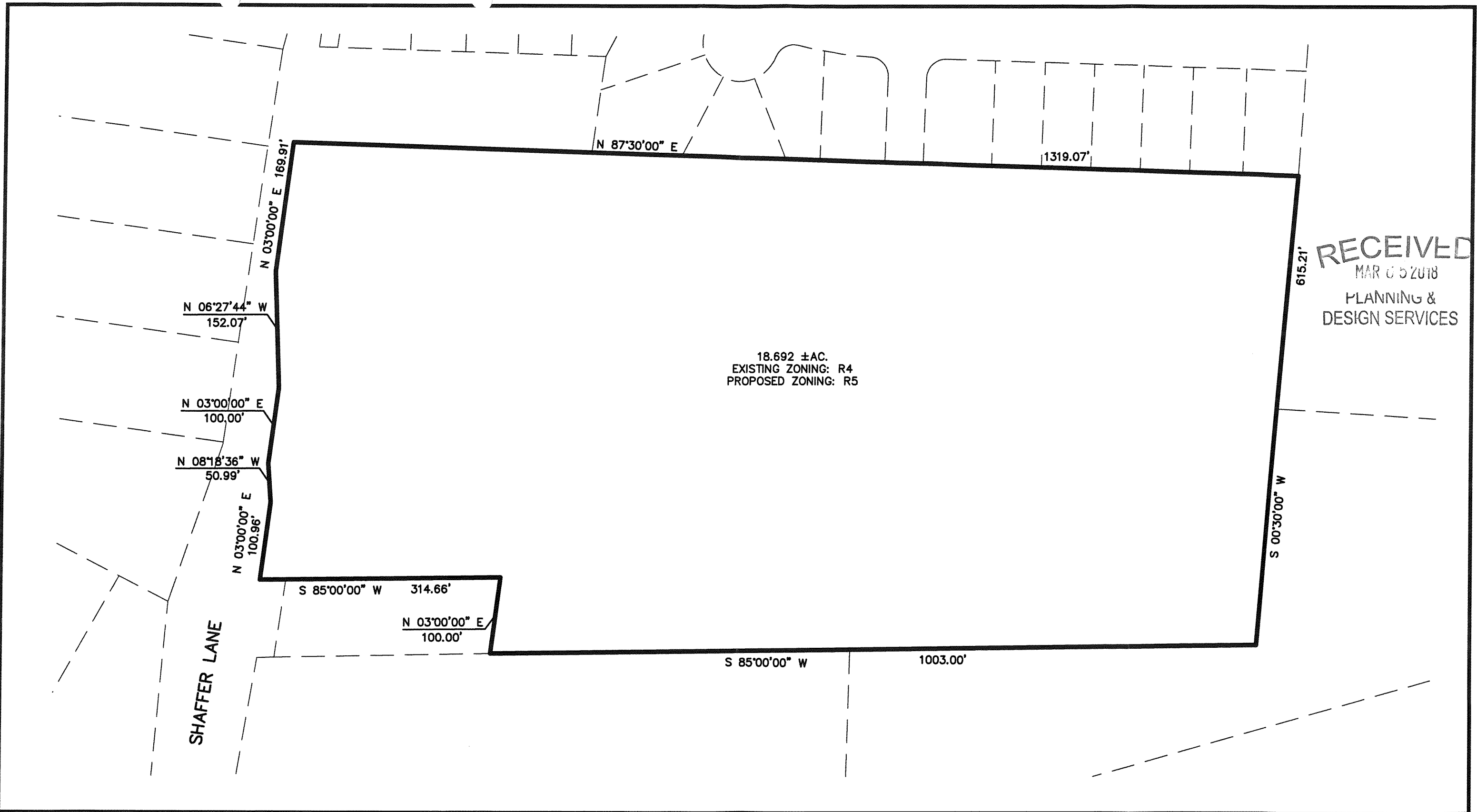
Thence S 0°30'00" W a distance of 615.21' to a point;

Thence S 85°00'00" W a distance of 1003.00' to a point;

Thence N 3°00'00" E a distance of 100.00' to a point;

Thence S 85°00'00" E a distance of 314.66' to the **Point of Beginning**, containing 18.692 acres or 814,216.95 square feet; subject to all encumbrances, easements and exceptions of record or not.

18 ZONE 1009



RECEIVED
 MAR 05 2018
 PLANNING &
 DESIGN SERVICES

18.692 ± AC.
 EXISTING ZONING: R4
 PROPOSED ZONING: R5

SHAFFER LANE



MINDEL SCOTT
 ENGINEERING ► SURVEYING ► PLANNING ► LANDSCAPE ARCHITECTURE
 5151 Jefferson Blvd. Louisville, KY 40219
 502-485-1508 ► MindelScott.com

<p>OWNER THE ROBERSON TRUST 2840 SUNFISH SCHOOL ROAD LOUISVILLE, KY 42210</p>	<p>DEVELOPER BALL HOMES 3609 WALDEN AVE. LEXINGTON, KY 40517</p>
---	--

BOUNDARY EXHIBIT
SHAFFER LANE SUBDIVISION
 6707 SHAFFER LANE LOUISVILLE, KY 40291
 T.B. 51, LOT 88
 D.B. 7985, PG. 767

Vertical Scale: N/A
Horizontal Scale: 1"=120'
Date: 3-5-18
Job Number: 3505

Sheet
1

18 ZONE 1009