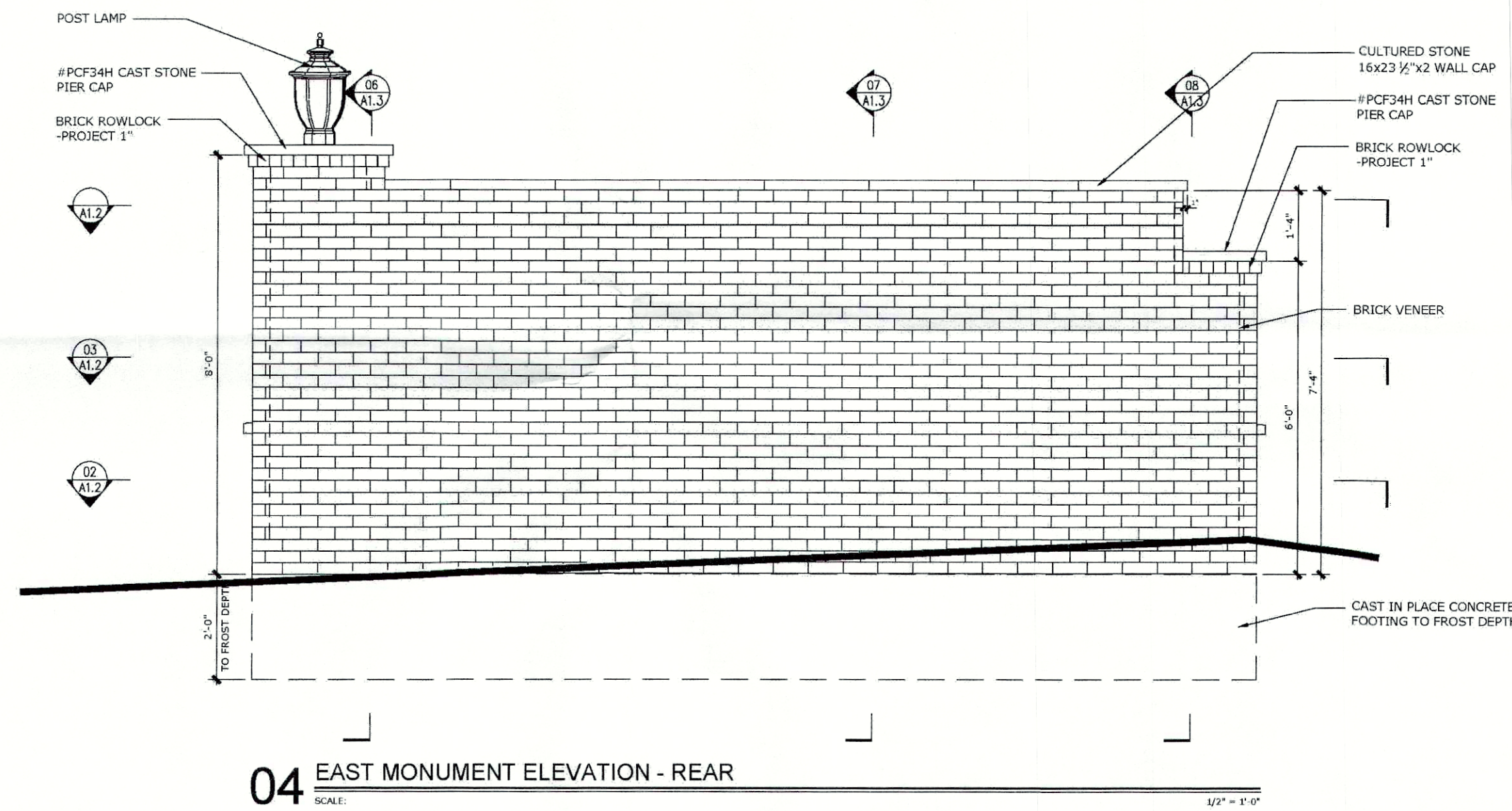
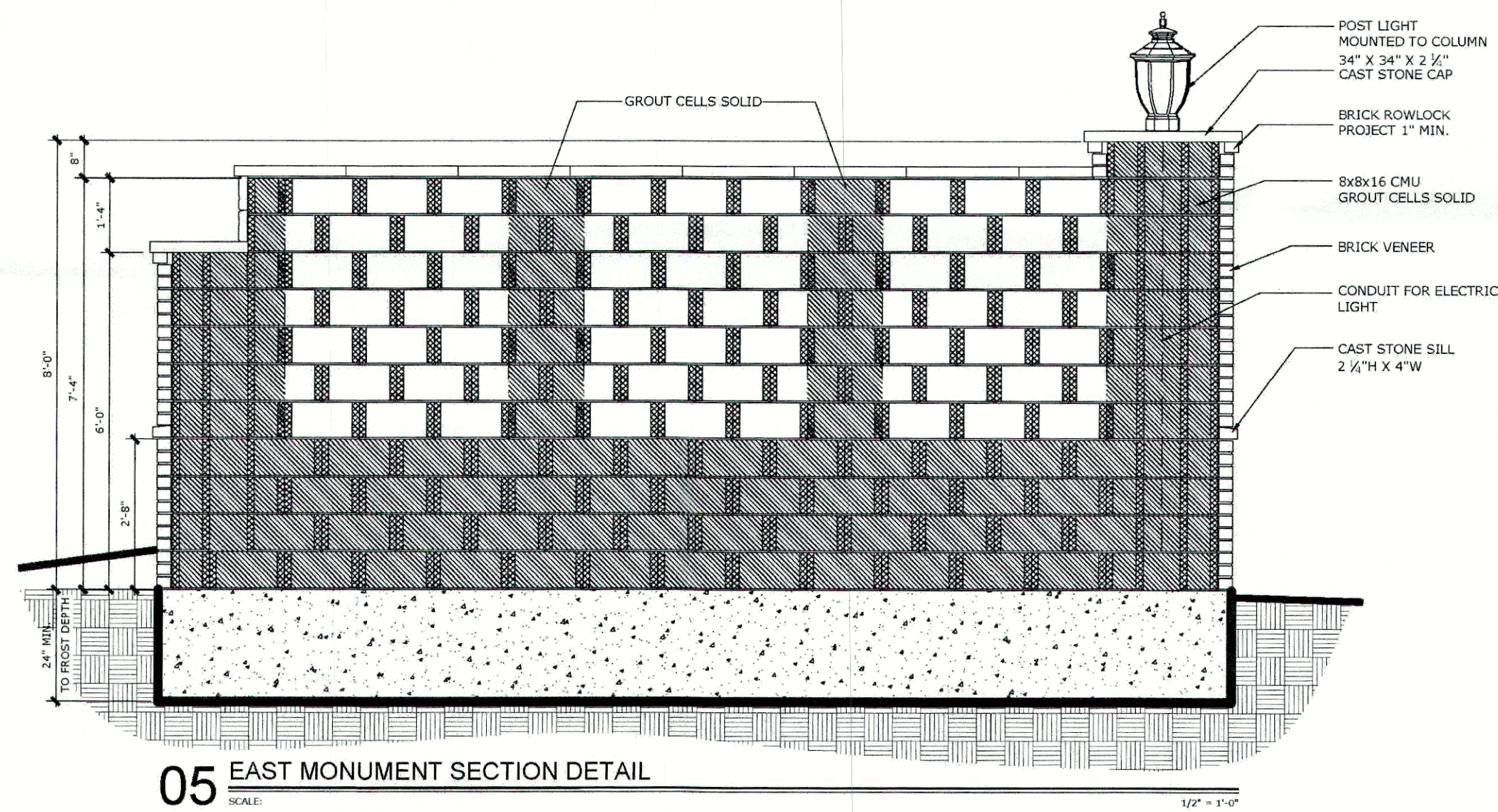


PLOT DATE: 3/27/2018 3:14 PM

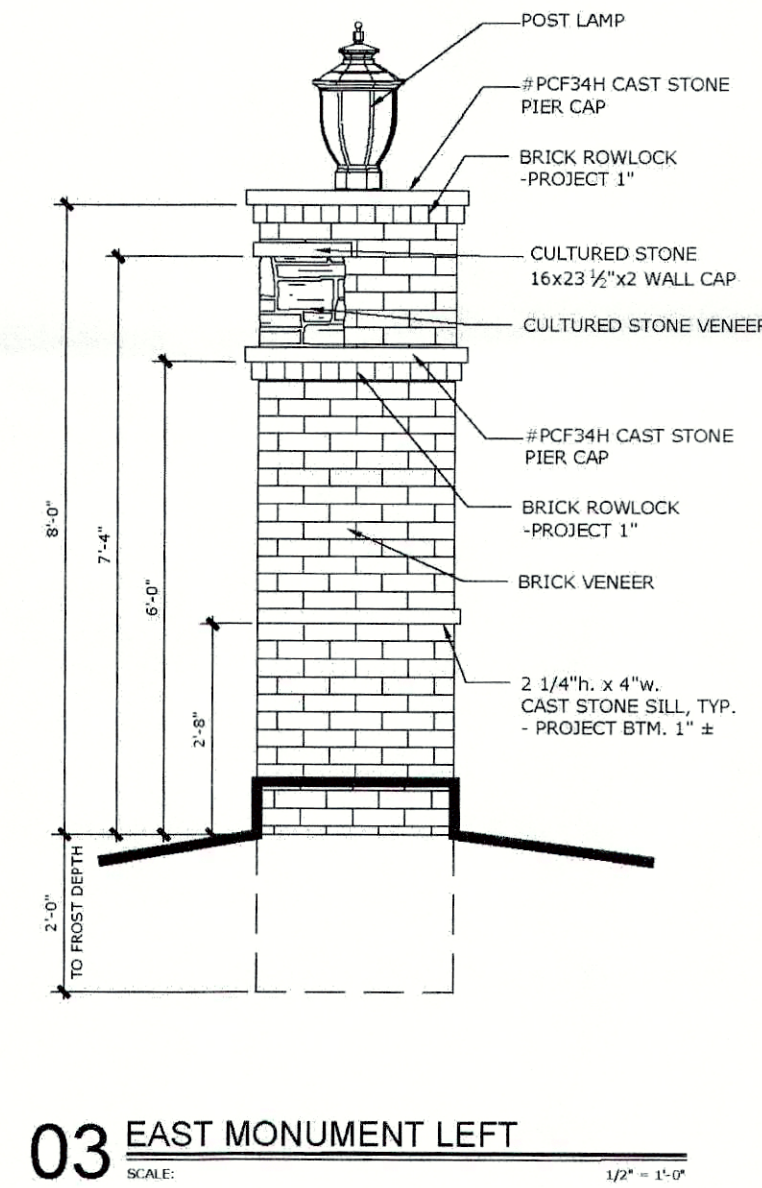
REASON FOR PLOT: FOR CONSTRUCTION



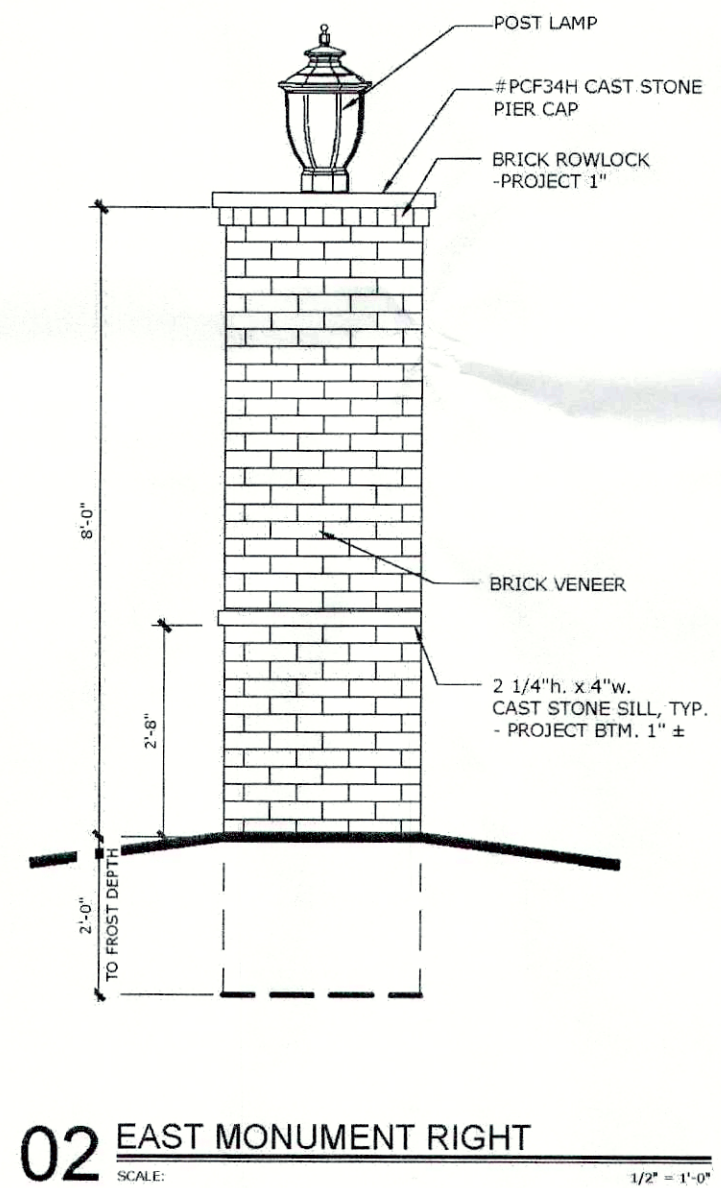
04 EAST MONUMENT ELEVATION - REAR



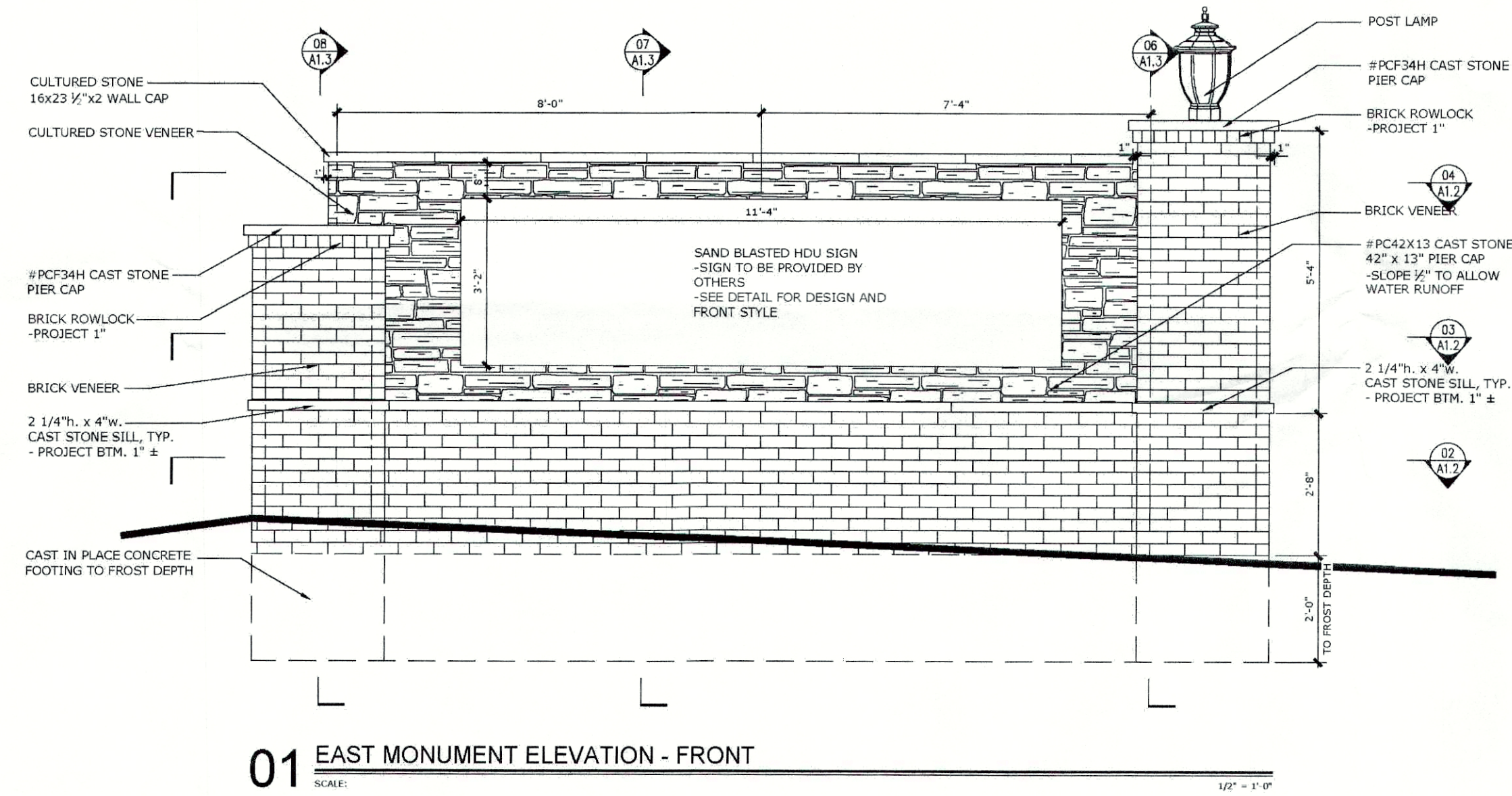
05 EAST MONUMENT SECTION DETAIL



03 EAST MONUMENT LEFT

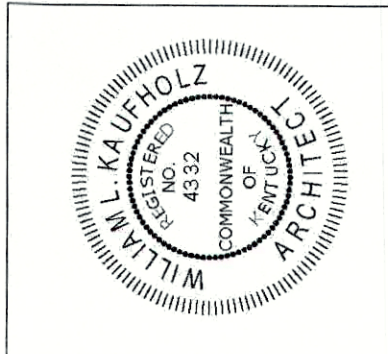


02 EAST MONUMENT RIGHT

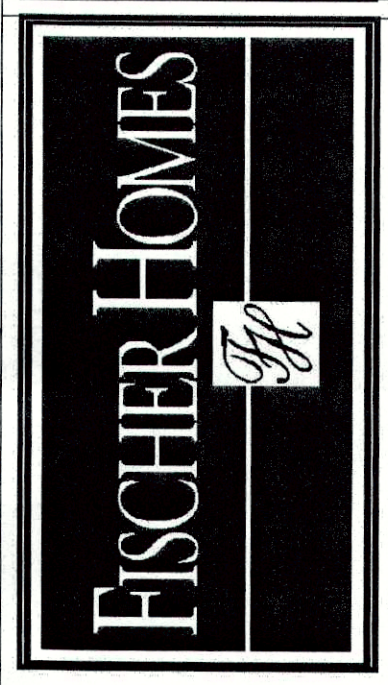


01 EAST MONUMENT ELEVATION - FRONT

REV. NO. #	DATE	BY	CHKD.
1	03/17/18	MM	MM
2	03/22/18	MM	MM
3	03/22/18	MM	MM
4	03/22/18	MM	MM
5	03/22/18	MM	MM
6	03/22/18	MM	MM
7	03/22/18	MM	MM
8	03/22/18	MM	MM
9	03/22/18	MM	MM
10	03/22/18	MM	MM
11	03/22/18	MM	MM
12	03/22/18	MM	MM
13	03/22/18	MM	MM
14	03/22/18	MM	MM
15	03/22/18	MM	MM
16	03/22/18	MM	MM
17	03/22/18	MM	MM
18	03/22/18	MM	MM
19	03/22/18	MM	MM
20	03/22/18	MM	MM



ENTRY MONUMENT FOR:
FLOYDS FORK
AKEN ROAD
LOUISVILLE, KY 40245



Sheet No.
A1.1
Sheet 1 of 1

Job No.
EFF-610

RECEIVED
APR 02 2018
PLANNING &
DESIGN SERVICES

NOTE:
SIGNATURE ENTRANCE WALL &
DETAILS PROVIDED BY:
THE FISCHER GROUP
3940 OLYMPIC BLVD.
SUITE 100
ERLANGER, KY 41018

CASE# 18DEVPLAN1022
RELATED CASES: 17LSCAPE1054
17LSCAPE1048, 16SUBDIV1011,
15SUBDIV1015



PROFESSIONAL'S SEAL

Vertical Scale: N/A
Horizontal Scale: N/A
Date: 2/22/18
Job Number: 3166
Sheet
3
of 6

SIGNATURE ENTRANCE WALL
MANOR AT FLOYDS FORK AND MEADOWS AT FLOYDS FORK (F.K.A. SUTHERLAND POINTE)
15905 AIKEN RD., LOUISVILLE, KENTUCKY 40245
TAX BLOCK 16, LOTS 100
D.B. 10724, PG. 70

OWNER / DEVELOPER
JSAR, LLC
9707 SHELBYVILLE ROAD
LOUISVILLE, KY 40223
(502) 548-6276

MINDEL SCOTT
ENGINEERING & SURVEYING & PLANNING & LANDSCAPE ARCHITECTURE
5151 Jefferson Blvd., Louisville, KY 40219
502-485-1508 • mindelscott.com

13mod100