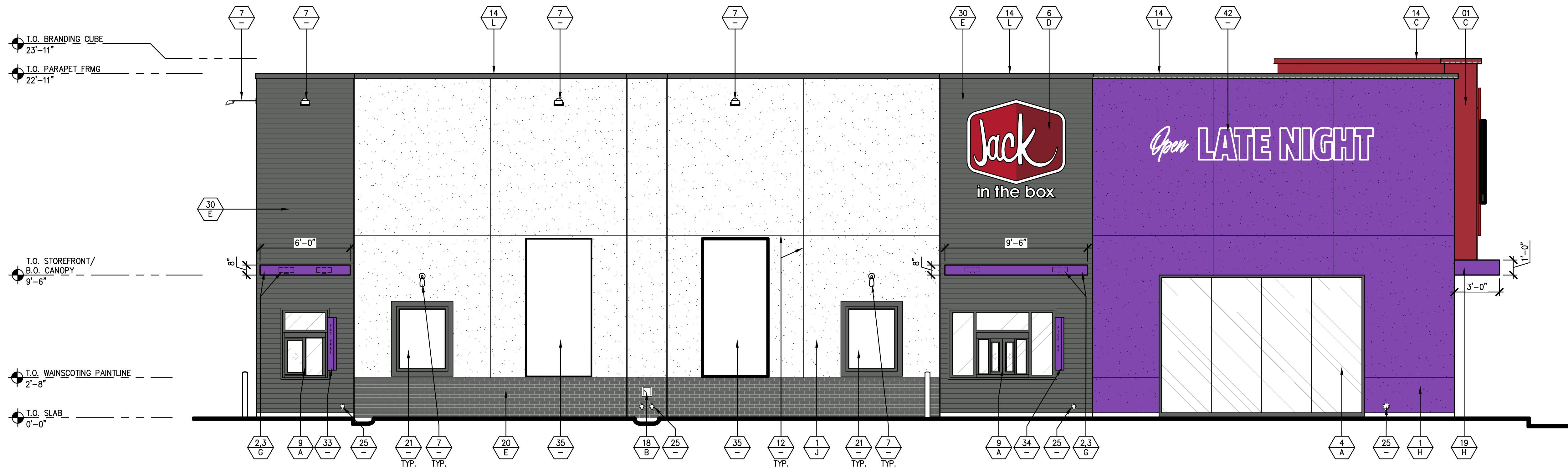


**1 REAR ELEVATION**

SCALE: 1/4" = 1'-0"

SIGNAGE CALCULATIONS			
DESCRIPTION	QUANTITY	SQ. FT. PER SIGN	TOTALS
GRAPHIC PANEL	1	40	40.0
TOTAL SIGNAGE S.F. THIS FACADE			40.0
REAR FACADE S.F.			878.0

SIGNAGE IS SHOWN FOR REFERENCE ONLY AND SHALL BE UNDER SEPARATE PERMIT SUBMITTAL BY JIB SIGN VENDOR.



**2 DRIVE-THRU ELEVATION**

SCALE: 1/4" = 1'-0"

**COLORS**

NOT ALL ITEMS LISTED BELOW MAY BE USED, REFER TO ELEVATIONS.

- A. CLEAR ANODIZED ALUMINUM
- B. COLOR/ FINISH TO MATCH ADJACENT SURFACE
- C. SHERWIN WILLIAMS: SW 7588 "SHOW STOPPER"
- D. JIB LOGOS: WHITE TEXT - RED BACKGROUND
- E. HARDIE BOARD SIDING: SW 7068 "GRIZZLE GRAY"
- F. THIN-BRICK VENEER: WIRE CUT, "ICEBERG"
- G. CANOPY: SW 6832 "IMPULSIVE PURPLE"
- H. SHERWIN WILLIAMS: SW 6832 "IMPULSIVE PURPLE"
- I. CORRUGATED METAL: "POLAR WHITE"
- J. SHERWIN WILLIAMS: SW 7005 "PURE WHITE"
- K. CONCRETE: NATURAL/ GRAY
- L. COPING: RAL-7039 "QUARTZ GRAY"
- M. SHERWIN WILLIAMS: SW 7064 "PASSIVE GRAY"
- N. ACM PANELS: "CLASSIC RED"

**EXTERIOR ELEVATION LEGEND**

- Material/Finish: #
- Color: X
- LED ROPE LIGHT FACE MOUNTED BY JIB VENDOR. SEE EXTERIOR ELEVATIONS, DETAILS, & ELECTRICAL DWGS.
- LED ROPE LIGHT IN COPING COVE BY JIB VENDOR. SEE EXTERIOR ELEVATIONS, DETAILS, & ELECTRICAL DWGS.

**EXTERIOR FINISH SCHEDULE**

NOT ALL ITEMS LISTED BELOW MAY BE USED, REFER TO ELEVATIONS.

1. EXTERIOR CEMENT PLASTER-SAND FLOAT FINISH & INTEGRAL COLOR, SEE SPECIFICATIONS.
2. DRIVE-THRU PRE-FAB CANOPY BY JIB VENDOR, SEE DETAIL 7/A9.5 (O.F.O.I).
3. MOUNT LIGHTING FIXTURE WITHIN CANOPY, COORDINATE WITH VENDOR MOUNTING REQUIREMENTS.
4. ALUMINUM STOREFRONT SYSTEM, SEE WINDOW TYPES & SPECIFICATIONS.
  - 1" CLEAR INSULATED GLASS
  - 1" CLEAR INSULATED GLASS W/ SOLARBAN 70XL COATING
  - 1" CLEAR INSULATED PER LOCAL AHJ REQUIREMENTS
  - ANTI GRAFFITI FILM W/ SOLARBAN 60 COATING
5. EXPOSED CONCRETE CURB/ STEM WALL.
6. INTERNALLY ILLUMINATED SIGN WITH WHITE LETTERS WITH "CLASSIC RED" BACKGROUND PROVIDED BY JIB VENDOR (O.F.O.I, UNDER SEPRATE SUBMITTAL).
7. WALL MOUNTED LIGHT FIXTURE, SEE DETAIL 6/A9.5 FOR FIXTURE ATTACHMENT.
8. WALK-UP WINDOW, SEE A1.0 & A8.1.
9. DRIVE-UP WINDOW, SEE A1.0 & A8.1.
10. NON-ILLUMINATED ADDRESS, MIN. 12"H, WHITE LETTERS (OF-EQ8) AND (OF-EQ8B) OR AS REQUIRED PER LOCAL JURISDICTION (O.F.O.I, UNDER SEPRATE SUBMITTAL).
11. MAIN ELECTRICAL SERVICE, SEE ELECTRICAL & CIVL DWGS.
12. CONTROL JOINT, SEE DETAIL 15/A9.3.
13. HOLLOW METAL DOORS & FRAMES, MISCELLANEOUS TRIM.
14. ALUMINUM COPING WITH FACATORY APPLIED FINISH, VERIFY W/ ROOF PLAN COPING AT LED ROPE LIGHTING LOCATION, SEE DETAILS 6, 7, & 8/A9.6.
15. CO2 FILL BOX, SEE DETAIL 5/A9.3.
16. BULK OIL FILL BOX (OPTION), SEE DETAIL 3/A9.3. VERIFY W/ JIB CONSTRUCTION IF REQUIRED.
17. GREASE TANK RECOVERY TAP-IN (STANDARD), SEE DETAIL 4/A9.3.
18. RECESSED, LOCKABLE, NON-FREEZE HOSE-BIB ENCLOSURE.
19. CANTILEVERED CANOPY BY G.C.; WRAP FASCIA W/ SEAMLESS METAL CLADDING, SEE WALL SECTIONS.
20. THIN-BRICK VENEER BY CORONADO STONE, SEE SPECIFICATIONS.
21. DISPLAY POSTER PANEL & SURROUND, SEE DETAIL 9/A9.3.
22. EXTERIOR WALL PACK LIGHT FIXTURE (OF-EQ28).
23. ANCHOR-TITE STANDARD FASCIA BY METAL ERA, COLOR: CHARCOAL GRAY, SEE WALL SECTIONS ("W" VERSIONS ONLY).
24. CORRUGATED BRANDING PANELS (O.F.O.I) (OF-EQ10) ("W" VERSIONS ONLY).
25. DOWNSPOUT OUTLET, SEE DETAIL 7/A9.0.
26. JIB CUSTOM STOREFRONT DOOR PULL, SEE HARDWARE SCHEDULES (OF-EQ13).
27. HARDI-BOARD AT UNDERSIDE OF G.C. FRAMED CANOPY, SEE DETAILS ON SHEET A9.4, COLOR TO MATCH CANOPY COPING & FASCIA ("W" VERSIONS ONLY).
28. ROOF TOP MECHANICAL EQUIPMENT BEYOND, SEE MECHANICAL & HOOD DWGS.
29. VINYL LETTERING TO BE SINGLE DECAL (OF-EQ5B).
30. HARDIE LAP BOARD SIDING, SEE SPECIFICATIONS.
31. WINDOW SIGN (OF-EQ12).
32. FROSTED GLAZING, SEE A8 SHEET SERIES FOR INFORMATION ("W" VERSIONS ONLY)
33. "PAY HERE" BLADE SIGN (OF-EQ7A).
34. "PICK-UP" BLADE SIGN (OF-EQ7B).
35. GRAPHIC PANEL BY JIB SIGN VENDOR (O.F.O.I, UNDER SEPRATE SUBMITTAL).
36. METAL GRAPHIC W/ HALO ILLUMINATION BY JIB SIGN VENDOR (O.F.O.I, UNDER SEPRATE SUBMITTAL).
37. BRAKE METAL WRAP & COLUMN, SEE SHEET A1.0 & DETAILS ON A9.2.
38. METAL PANEL VENEER SYSTEM BY JIB VENDOR, SEE SEE SECTIONS & DETAILS.
39. GAS METER, SEE A1.0, MECHANICAL, & CIVL DWGS.
40. PRE-FABRICATED CANOPY FASCIA W/ INTERNALLY ILLUMINATED LETTERS, BY JIB VENDOR.
41. ACCESS PANEL TO MATCH METAL PANEL VENEER, SEE ROOF PLAN & WALL SECTIONS FOR SPECIFICATION.
42. INTERNALLY ILLUMINATED SIGN WITH WHITE LETTERS WITH "PURPLE" BACKGROUND PROVIDED BY JIB VENDOR (O.F.O.I, UNDER SEPARATE SUBMITTAL).

SIGNAGE CALCULATIONS			
DESCRIPTION	QUANTITY	SQ. FT. PER SIGN	TOTALS
DRIVE-THRU LOGO SIGN	1	34	34.0
DISPLAY POSTER	2	12	24.0
"OPEN LATE NIGHT" SIGN	1	26	26.0
GRAPHIC PANEL	2	12	24.0
TOTAL SIGNAGE S.F. THIS FACADE			108.0
DRIVE-THRU FACADE S.F.			1828.0

SIGNAGE IS SHOWN FOR REFERENCE ONLY AND SHALL BE UNDER SEPARATE PERMIT SUBMITTAL BY JIB SIGN VENDOR.

**Jack**  
In the box

9357 SPECTRUM CENTER BLVD  
SAN DIEGO, CA 92123  
© 2022 Jack in the Box Inc.

These designs, drawings and specifications are the property of Jack in the Box Inc. and shall not be copied or reproduced without its previous written consent.

**DATES**

RELEASE: APRIL 2022

P.M. UPDATES: \_\_\_\_\_

SUBMITTAL DATE:

1: \_\_\_\_\_

2: \_\_\_\_\_

3: \_\_\_\_\_

BID: \_\_\_\_\_

CONSTRUCTION: \_\_\_\_\_

**REVISIONS**

NO.	DESCRIPTION

Copyright © 2022  
APD Engineering & Architecture, P.C.

Drawing Attention

It is a violation of law for any person, unless acting under the direction of a Licensed Architect, Professional Engineer, Landscape Architect, or Land Surveyor to alter any item on this document in any way. Any alteration which does not comply with the above shall be the responsibility of the person making the alteration. Approval of the original and the specific description of the alteration or revision.

DO NOT SCALE PLANS

These prints are for information only. They are not to be used for construction. If you have any questions or need additional dimensions or clarifications, please contact the architect or engineer of record.

**APD**  
ENGINEERING  
ARCHITECTURE  
615 Fishers Run Victor, NY 14564  
585.742.2222 www.apd.com

**SITE INFORMATION**

BLDG TYPE: MK12\_FMD

JIB #: #5007

ADDRESS:  
3232 BARDSTOWN ROAD  
LOUISVILLE, KY 40205

DRAWN BY: NGS

PROJECT #: 22-0186

SCALE: AS NOTED

**EXTERIOR ELEVATIONS**

FRONT-PUSH MEDIUM

**A4.1**