



HAMPTON INN FRONT

HOME2 SUITES SIDE



HAMPTON INN SIDE

HOME2 SUITES FRONT

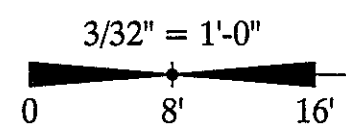
HAMPTON INN and HOME2 SUITES  
 PROPOSED NEW DUAL BRAND HOTEL  
 LOUISVILLE, KENTUCKY  
 WWW.DAVIDRCARTER.NET  
 DAVID R. CARTER AND ASSOCIATES

PRELIMINARY:  
 NOT FOR  
 CONSTRUCTION

ISSUE DATE 08-28-14  
 ▲ REVISION LOG

RECEIVED  
 AUG 28 2014  
 PLANNING &  
 DESIGN SERVICES

PROJECT 00619



EXTERIOR FINISH SCHEDULE- HAMPTON INN BRAND

MATERIAL	BASIS OF DESIGN	COLOR	REMARKS
EIFS- COLOR 1 (COLUMNS/TRIM)	DRYVIT OUTSULATION PLUS MD	*BM 1046 SANDY BROWN	SANDPEBBLE
EIFS- COLOR 2 (FIELD)	DRYVIT OUTSULATION PLUS MD	*BM 2164-20 MARSH BROWN	SANDPEBBLE
EIFS- COLOR 3 (NOT USED)			
EIFS- COLOR 4 (WINDOW ACCENT)	DRYVIT OUTSULATION PLUS MD	*BM 2134-20 MIDSUMMER NIGHT	SANDPEBBLE
FACE BRICK- MODULAR SIZE	PINE HALL BRICK	FARMINGTON	RUNNING BOND
FACE BRICK MORTAR	TO BE SELECTED	TO BE SELECTED	CONCAVE TOOLED JOINTS
PARAPET COPINGS	BERRIDGE/KYNAR	MATCH ADJACENT EIFS	PREFINISHED STEEL
GUTTERS & DOWNSPOUTS	ALCOA/KYNAR	MATCH ADJACENT EIFS	PREFINISHED ALUMINUM
WINDOWS/INTEGRAL PTAC GRILLES	QUAKER	DARK BRONZE	ANODIZED ALUMINUM
STOREFRONT	KAWNEER	DARK BRONZE	ANODIZED ALUMINUM
ALUMINUM DOORS	KAWNEER	DARK BRONZE	ANODIZED ALUMINUM
*COLOR FOR MATCHING	BENJAMIN MOORE	SEE ABOVE	MIX EIFS COLOR TO MATCH

EXTERIOR FINISH SCHEDULE- HOME2 SUITES BRAND

MATERIAL	BASIS OF DESIGN	COLOR	REMARKS
EIFS- COLOR 1	DRYVIT OUTSULATION PLUS MD	*BM 1046 SANDY BROWN	SANDPEBBLE
EIFS- COLOR 2	DRYVIT OUTSULATION PLUS MD	*BM 2164-20 MARSH BROWN	SANDPEBBLE
EIFS- COLOR 3	DRYVIT OUTSULATION PLUS MD	*BM 2134-20 MIDSUMMER NIGHT	SANDPEBBLE
EIFS- COLOR 4	DRYVIT OUTSULATION PLUS MD	*BM 2134-20 MIDSUMMER NIGHT	SANDPEBBLE
EIFS- COLOR 5 (TOWER REVEAL)	DRYVIT OUTSULATION PLUS MD	*BM 398 FLOWER POWER	SANDPEBBLE
LARGE FORMAT TILE	KERLITE BUXY	NOISETTE	NATURAL FINISH
LARGE FORMAT TILE GROUT		MATCH NOISETTE	CONCAVE TOOLED JOINT
PARAPET COPINGS	BERRIDGE/KYNAR	MATCH EIFS COLOR BELOW	PREFINISHED STEEL
STEEL PORTE COCHERE & PERGOLA	BENJAMIN MOORE	WHITE DOVE OC-17	FIELD PRIME/PAINT HIGH GLOSS
WOOD TRELLIS	PRESERVATIVE TREATED	MATCH MARSH BROWN 2164-20*	FIELD STAIN
WINDOWS/INTEGRAL PTAC GRILLES	KAWNEER	STERLING GRAY 789G018	PERMADIZE COATING
STOREFRONT	KAWNEER	STERLING GRAY 789G018	PERMADIZE COATING
ALUMINUM DOORS	KAWNEER	STERLING GRAY 789G018	PERMADIZE COATING
*COLOR FOR MATCHING	BENJAMIN MOORE	SEE ABOVE	MIX EIFS COLOR TO MATCH

EXTERIOR FINISH SCHEDULE- FOR BOTH BRANDS

MATERIAL	BASIS OF DESIGN	COLOR	REMARKS
HOLLOW METAL DOORS & FRAMES		MATCH ADJACENT COLOR	FACTORY PRIME/FIELD PAINT
WALL LOUVERS		MATCH ADJACENT COLOR	PREFINISHED ALUMINUM
GAS PIPES, TEST DRAINS, ETC.		MATCH ADJACENT COLOR	FIELD PRIME/PAINT HIGH GLOSS
LIGHT FIXTURES		SEE "E" DRAWINGS	PREFINISHED
DUMPSTER STEEL GATE AND POSTS		MATCH EIFS COLOR 1	FIELD PRIME/PAINT HIGH GLOSS
DUMPSTER STEEL BOLLARDS		MATCH EIFS COLOR 1	FIELD PRIME/PAINT HIGH GLOSS
FLAG POLE		WHITE BAKED ENAMEL	PREFINISHED ALUMINUM
SEALANT		MATCH ADJACENT COLOR	SEE NOTES, SHEET A401

\*COLOR SCHEME PROTOTYPICAL.  
 \*COLORS ARE GENERAL DESCRIPTIONS. EXACT COLORS SHALL BE SELECTED BY OWNER DURING SUBMITTAL REVIEW.  
 \*MANUFACTURERS ARE NOT LIMITED TO BASIS OF DESIGN. EQUIVALENT PRODUCTS ARE ACCEPTABLE, EXCEPT NO SUBSTITUTIONS FOR FACE BRICK AND MORTAR.

\*COLOR SCHEME PROTOTYPICAL. STYLEGUIDE PAGE 29.  
 \*COLORS ARE GENERAL DESCRIPTIONS. EXACT COLORS SHALL BE SELECTED BY OWNER DURING SUBMITTAL REVIEW.  
 \*MANUFACTURERS ARE NOT LIMITED TO BASIS OF DESIGN. EQUIVALENT PRODUCTS ARE ACCEPTABLE, EXCEPT NO SUBSTITUTIONS FOR FACE BRICK AND MORTAR.

\*COLORS ARE GENERAL DESCRIPTIONS. EXACT COLORS SHALL BE SELECTED BY OWNER DURING SUBMITTAL REVIEW.  
 \*MANUFACTURERS ARE NOT LIMITED TO BASIS OF DESIGN. EQUIVALENT PRODUCTS ARE ACCEPTABLE, EXCEPT NO SUBSTITUTIONS FOR FACE BRICK AND MORTAR.

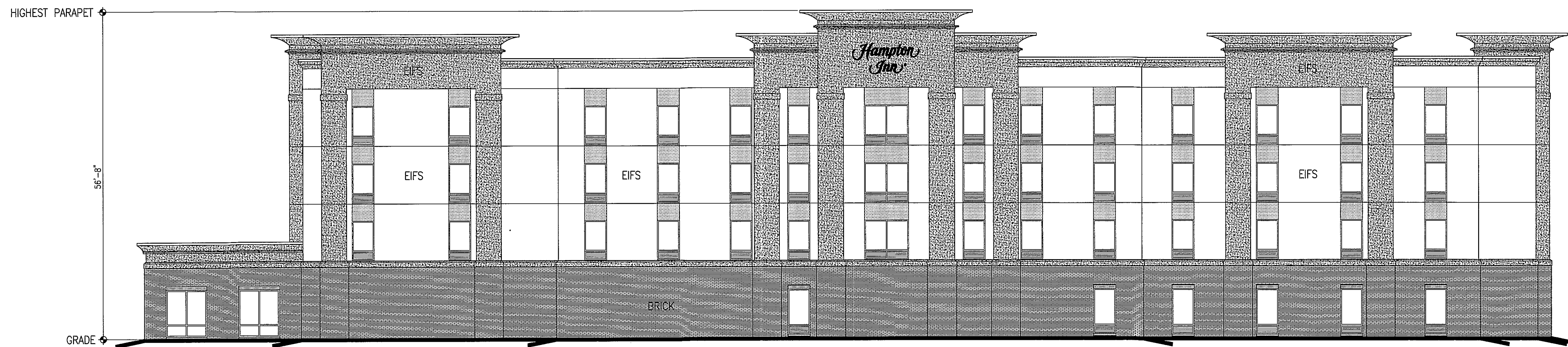
EXTERIOR ELEVATIONS 1 of 2

24 x 36

14DENRAN1073



HOME2 SUITES REAR  
FACING BANK



HAMPTON INN REAR  
FACING HURSTBOURNE PARKWAY

HAMPTON INN and HOME2 SUITES  
PROPOSED NEW DUAL BRAND HOTEL  
LOUISVILLE, KENTUCKY  
WWW.DAVIDRCARTER.NET  
DAVID R. CARTER AND ASSOCIATES

PRELIMINARY:  
NOT FOR  
CONSTRUCTION

ISSUE DATE 08-28-14  
▲ REVISION LOG  
**RECEIVED**  
AUG 28 2014  
PLANNING &  
DESIGN SERVICES

3/32" = 1'-0"  
0 8' 16'  
PROJECT 00619

EXTERIOR ELEVATIONS 2 of 2

24 x 36