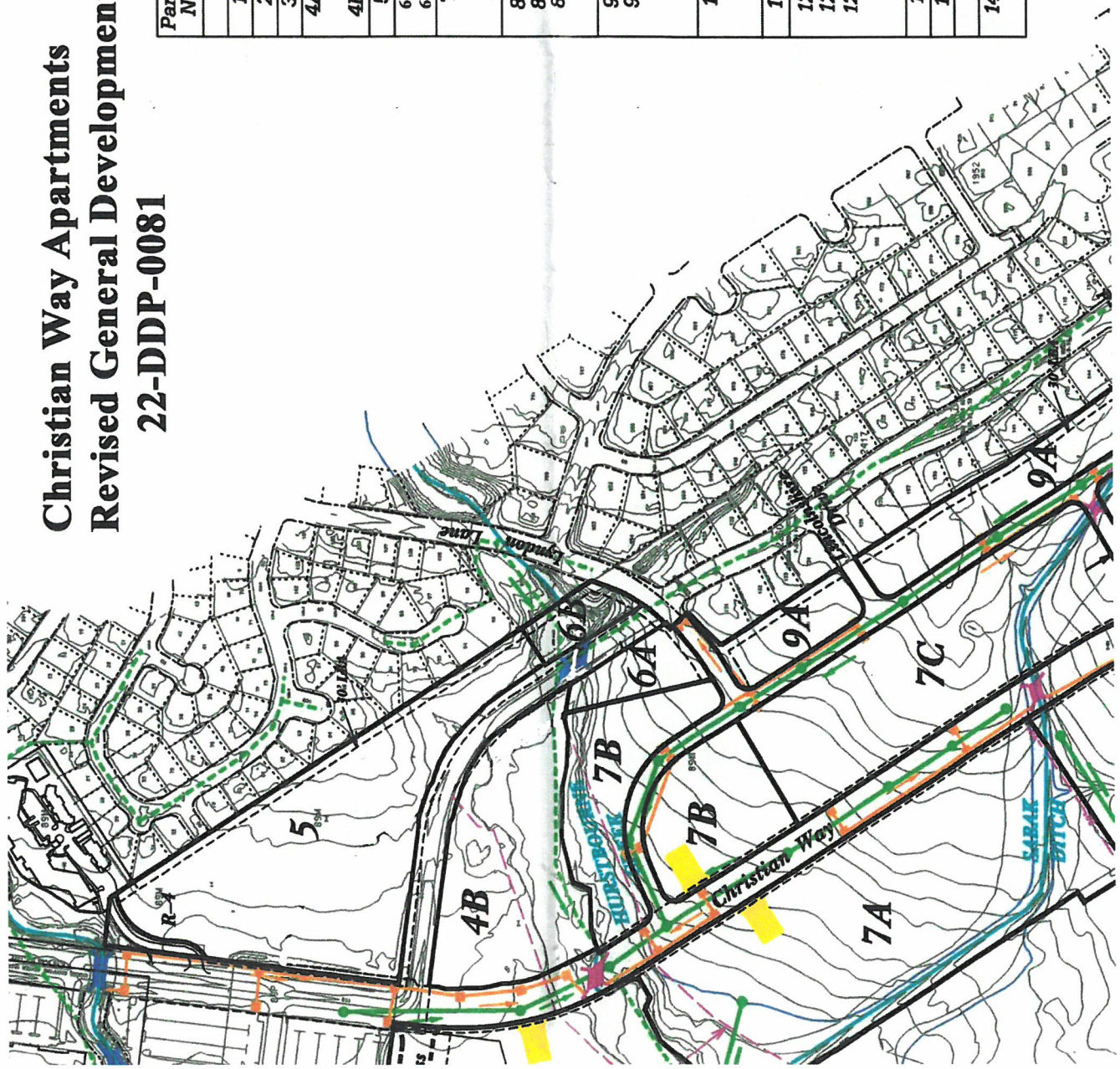


RECEIVED
SEP 12 2022

**Christian Way Apartments
Revised General Development Plan Exhibit
22-DDP-0081**

PLANNING & DESIGN SERVICES



Parcel No.	Use	Existing Zoning	Prop. Zoning	Land Area	Phase
CITY OF LOUISVILLE					
1	Specialty Retail	R-4	C-1	9.8	1
2	Open Space	R-4	R-4	5.4	1
3	Open Space	R-4, C-1	R-4	0.7	1
4A	Retail, Office, Future Road; Retail		C-1	20.7	2
4B				8.5	
5	Apartments	R-6, C-1	R-6	14.3	1
6A	Open Space/Stormwater Mgmt.	R-6	R-6	1.7	2
6B	Stormwater Mgmt.	R-6, R-4	R-6, R-4	1.2	
7	Condominiums Apartments Stormwater Mgmt.	R-4	R-6	43.4	2
8A	"Center" retail	R-4	C-1	6.7	2
8C	Hotel-Conference		C-1	11.8	3
8B	Condominiums Apartments		R-6	9.5	3
9A	Single Family Condominiums Apartments Open Space	R-4	R-4	21.5	3
9B			R-6	34.0	
10	Corporate Office Open Space Storm Water Mgmt.	R-4	OR-3	17.0	3
11	General retail	R-4		13.5	3
12A	Corporate Office	R-4	OR-3	32.6	2
12B	General Office		OR-3	21.2	
12C	Open Space-Storm Mgmt.		OR-3	17.8	
13	Corporate Office	R-4	OR-3	40.1	2
15	Preservation	R-4	R-4	79.0	1
UNINCORPORATED JEFFERSON COUNTY					
14A	Corporate Office	R-4	OR-3	22.9	3

22-DDP-0081